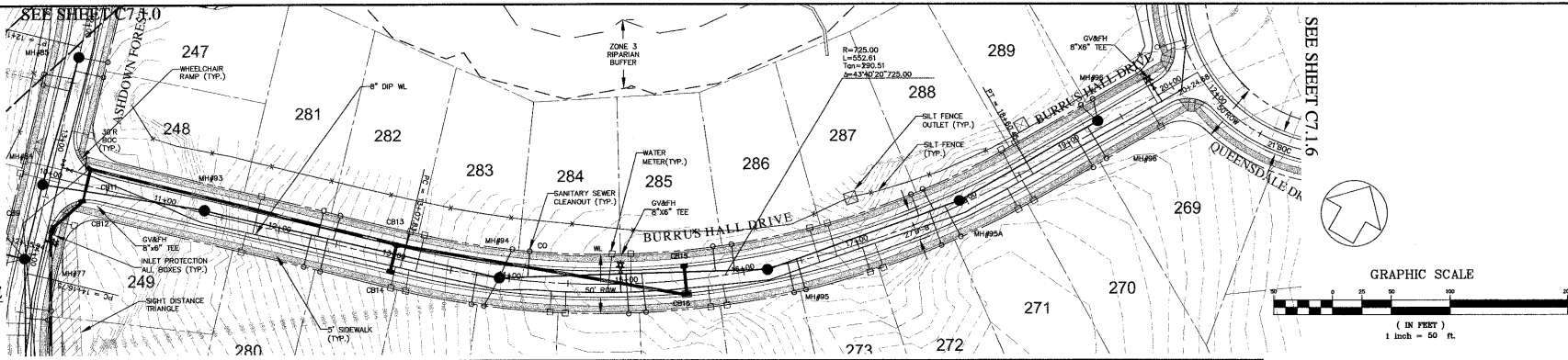
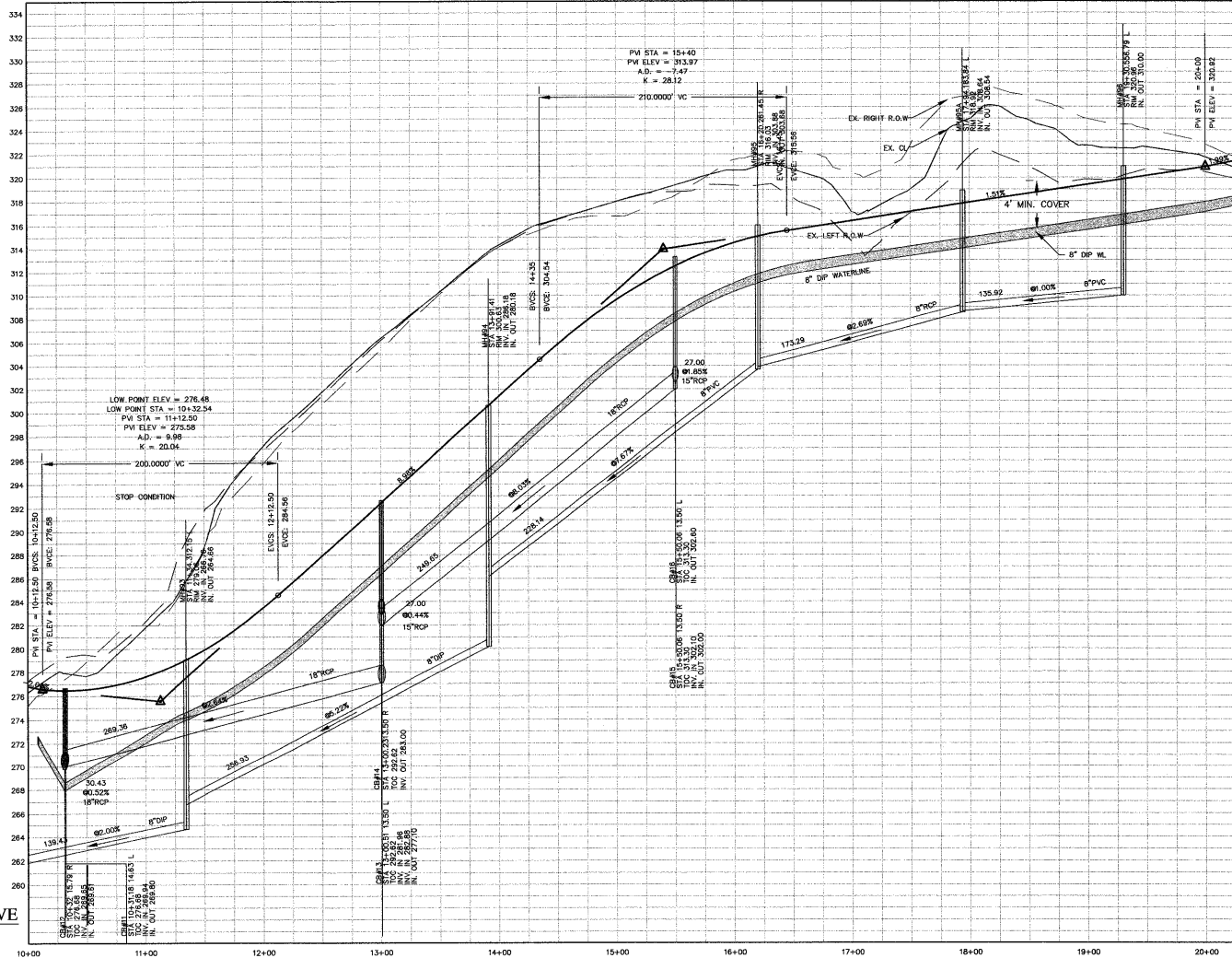


NOTES:  
 ALL FIRE HYDRANTS ARE TO BE LOCATED BETWEEN THE SIDEWALK AND CURB  
 ALL AIR RELEASE VALVES TO CONFORM TO "STANDARD COMBINATION AIR RELEASE MANHOLE", CARY STANDARD 6.15, SHEET 2 OF 2.

**BURRUS HALL DRIVE**  
 PLAN VIEW



**BURRUS HALL DRIVE**  
 PROFILE



SCALE: (H) 1"=50'  
 (V) 1"=5'

03-SB-012  
 APPROVED  
 TOWN OF CARY  
 Approved by: *[Signature]* Date: 8-2-04  
 Planning: *[Signature]* Date: 8-27-04  
 Engineering: *[Signature]* Date: 8-30-04

**CHAS. H. SELLS, INC.**  
 Consulting Engineers, Surveyors & Planners  
 15300 Weston Parkway  
 Suite 106  
 Cary, NC 27513  
 Tel: 919-678-0035  
 Fax: 919-678-0206  
 www.chasells.com



**The Peninsula at Amberly**  
 Yates Store Road - Cary, NC  
 GS Carolina  
 11600 North Community House Road, Suite 200  
 Charlotte, NC 28277

REVISIONS
1/5/04 REVISED PER TOC COMMENTS
2/23/04 REVISED PER TOC COMMENTS
4/5/04 REVISED PER TOC COMMENTS
△ REVISED - 05/17/04
△ REVISED - 05/21/04
△ REVISED - 07/28/04

PROJECT # 03423 DATE: 11/03/03  
 DRAWN BY: SLS CHECKED BY: JBE  
 TITLE  
**ROAD PLAN & PROFILES BURRUS HALL DRIVE**  
 SHEET  
**C7.1.2**

© CHAS SELLS, INC. ALL RIGHTS ARE RESERVED. ANY REPRODUCTION OR OTHER USE OF THIS DOCUMENT WITHOUT PRIOR PERMISSION FROM CHAS. H. SELLS, INC. IS EXPRESSLY PROHIBITED.