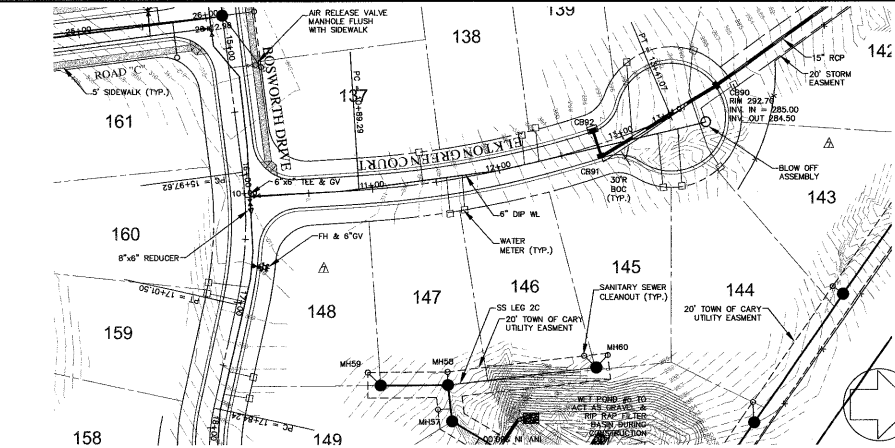


**CASABLANCA COURT**  
PLAN VIEW

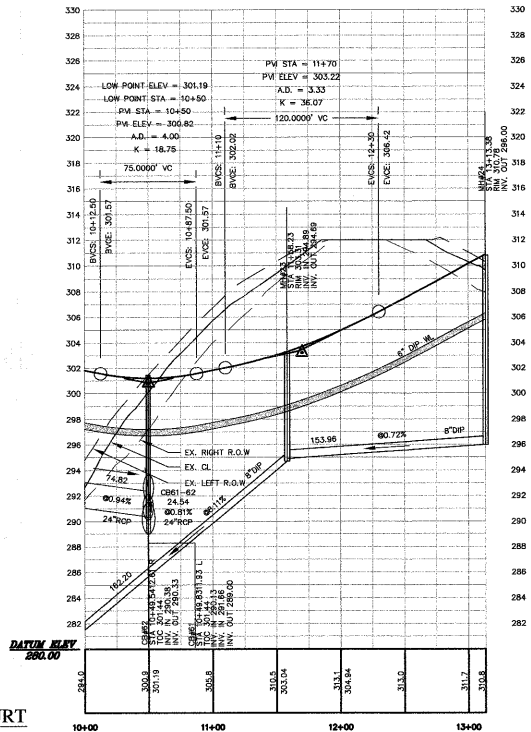
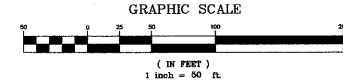
**NOTES:**

ALL FIRE HYDRANTS ARE TO BE LOCATED BETWEEN THE SIDEWALK AND CURB

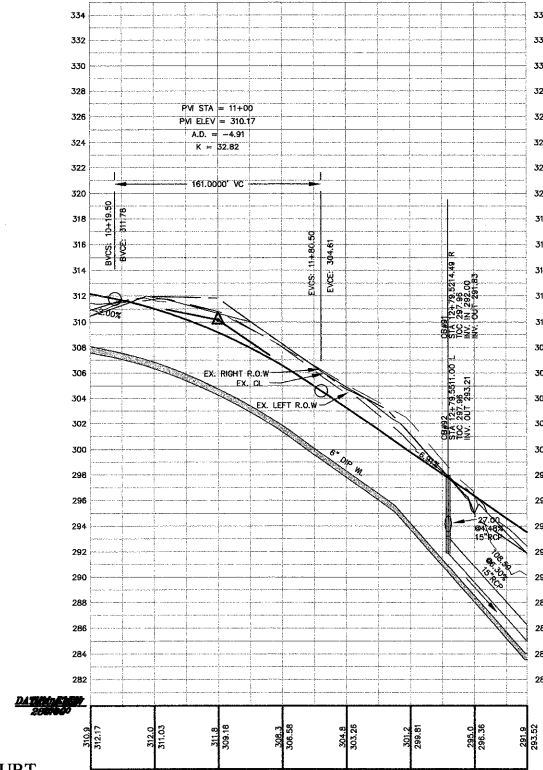
ALL AIR RELEASE VALVES TO CONFORM TO "STANDARD COMBINATION AIR RELEASE MANHOLE", CARY STANDARD 6.15, SHEET 2 OF 2.



**ELKTON GREEN COURT**  
PLAN VIEW



**CASABLANCA COURT**  
PROFILE

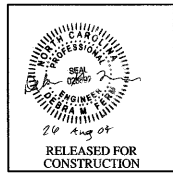


**ELKTON GREEN COURT**  
PROFILE

Approved by *[Signature]* Date **8-1-04**  
 Planning **TS** Date **8-17-04**  
 Engineering **TS** Date **8-20-04**

SCALE: (H) 1"=50'  
(V) 1"=5'

**CHAS. H. SELLS, INC.**  
 Consulting Engineers, Surveyors & Photogrammetrists  
 15300 Weston Parkway, Suite 106  
 Cary, NC 27513  
 Tel: 919-678-0035  
 Fax: 919-678-0206  
 www.chsellsets.com



**The Peninsula at Amberly**  
 Yates Store Road - Cary, NC

REVISIONS

1/5/04	REVISED PER TOC COMMENTS
2/23/04	REVISED PER TOC COMMENTS
4/5/04	REVISED PER TOC COMMENTS
Δ	REVISED - 07/23/04

PROJECT #: 0423 DATE: 11/04/03  
 DRAWN BY: SLS CHECKED BY: JMB  
 TITLE  
**RD PLAN & PROFILES**  
**CASABLANCA CT**  
**& ELKTON GREEN CT**  
 SHEET  
**C7.1.12**

© CHAS. H. SELLS, INC. ALL RIGHTS ARE RESERVED. ANY REPRODUCTION OR OTHER USE OF THIS DOCUMENT WITHOUT PRIOR WRITTEN PERMISSION FROM CHAS. H. SELLS, INC. IS EXPRESSLY PROHIBITED.