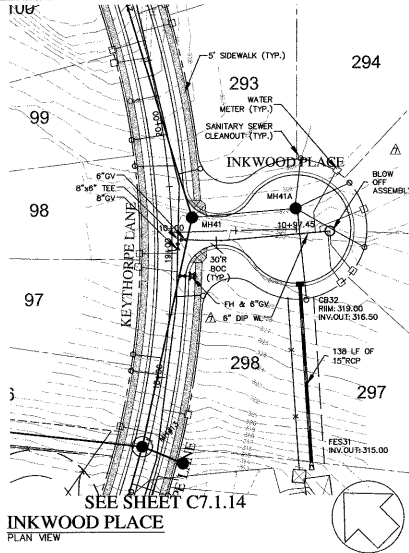
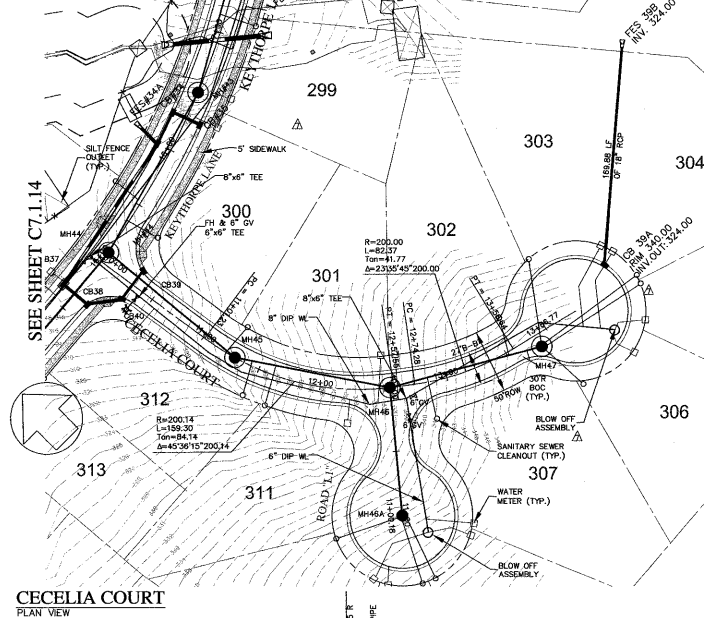


SEE SHEET C7.1.8
HARBIN RIDGE COURT
PLAN VIEW

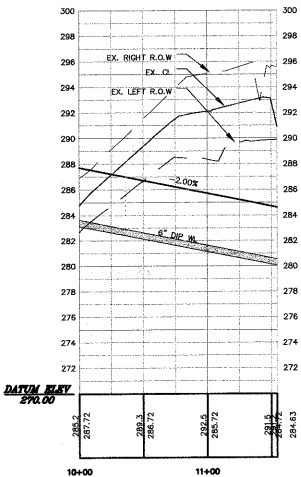


SEE SHEET C7.1.14
INKWOOD PLACE
PLAN VIEW



CECELIA COURT
PLAN VIEW

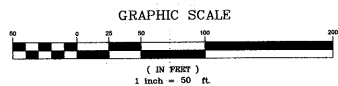
NOTES:
ALL FIRE HYDRANTS ARE TO BE LOCATED BETWEEN THE SIDEWALK AND CURB
ALL AIR RELEASE VALVES TO CONFORM TO "STANDARD COMBINATION AIR RELEASE MANHOLE", CARY STANDARD 6.15, SHEET 2 OF 2.



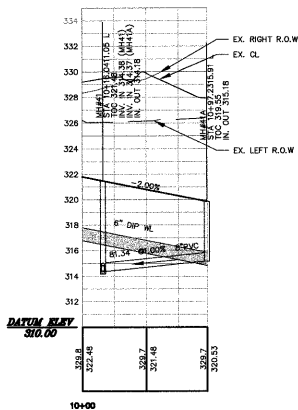
HARBIN RIDGE COURT
PROFILE

03-SB-012
APPROVED
TOWN OF CARY

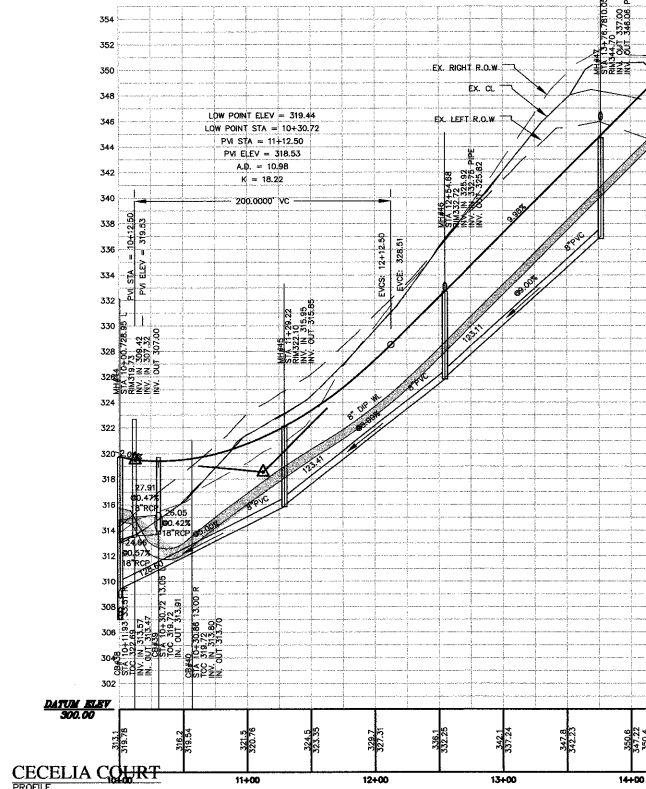
Approved by *[Signature]* Date *8-2-06*
Planning *[Signature]* Date *8-27-09*
Engineering *[Signature]* Date *8-20-04*



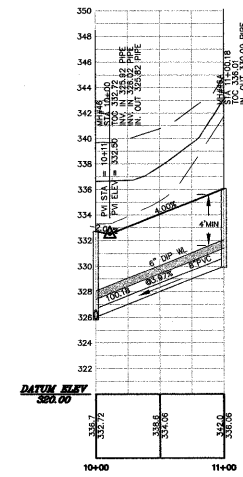
SCALE: (H) 1"=50'
(V) 1"=5'



INKWOOD PLACE
PROFILE

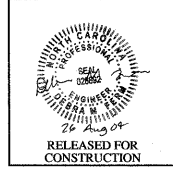


CECELIA COURT
PROFILE



CECELIA COURT
PROFILE

CHAS. H. SELLS, INC.
Consulting Engineers, Surveyors & Planners/Architects
15300 Westover Parkway
Suite 106
Cary, NC 27513
Tel: 919-678-0035
Fax: 919-678-0206
www.chasells.com



The Peninsula at Amberly
Yates Store Road - Cary, NC

REVISIONS
1/5/04 REVISED PER TOC COMMENTS
2/23/04 REVISED PER TOC COMMENTS
4/5/04 REVISED PER TOC COMMENTS
△ REVISED - 07/28/04

PROJECT #: 03423 DATE: 11/03/03
DRAWN BY: SLS CHECKED BY: JBE
TITLE
ROAD PLAN & PROFILES
HARBIN RIDGE COURT
INKWOOD PLACE
& CECELIA COURT
SHEET
C7.1.13

© CHASSELLS, INC. ALL RIGHTS ARE RESERVED. ANY POSSIBLE REPRODUCTION OR OTHER USE OF THIS DOCUMENT WITHOUT PERMISSION FROM CHAS. H. SELLS, INC. IS EXPRESSLY PROHIBITED.