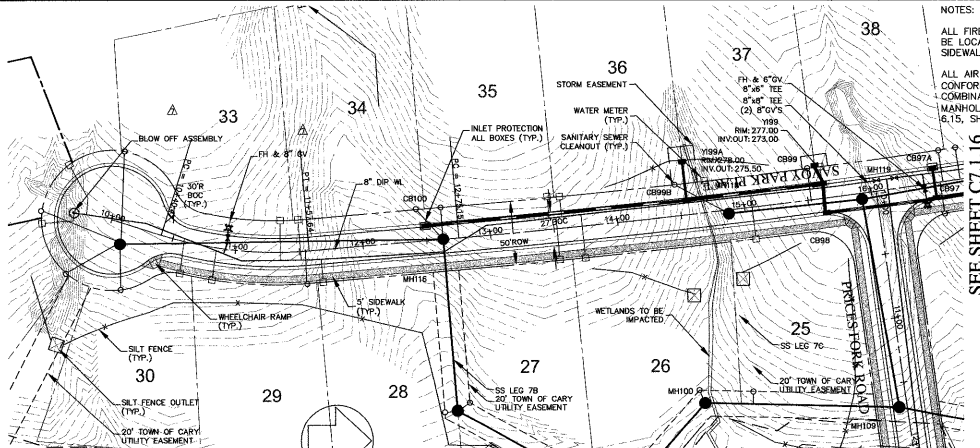
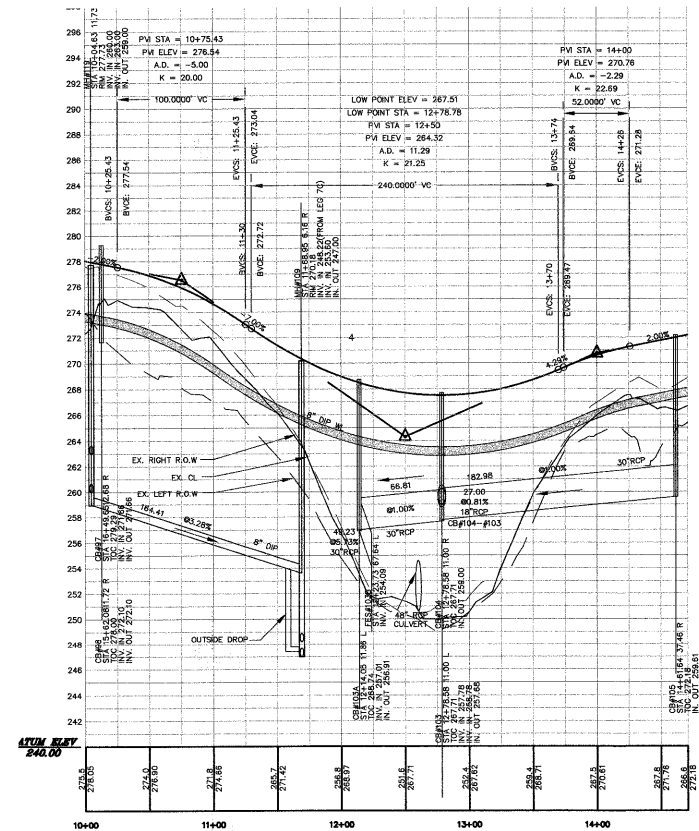
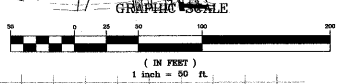


SEE SHEET C7.1.15
PRICES FORK ROAD
 PLAN VIEW

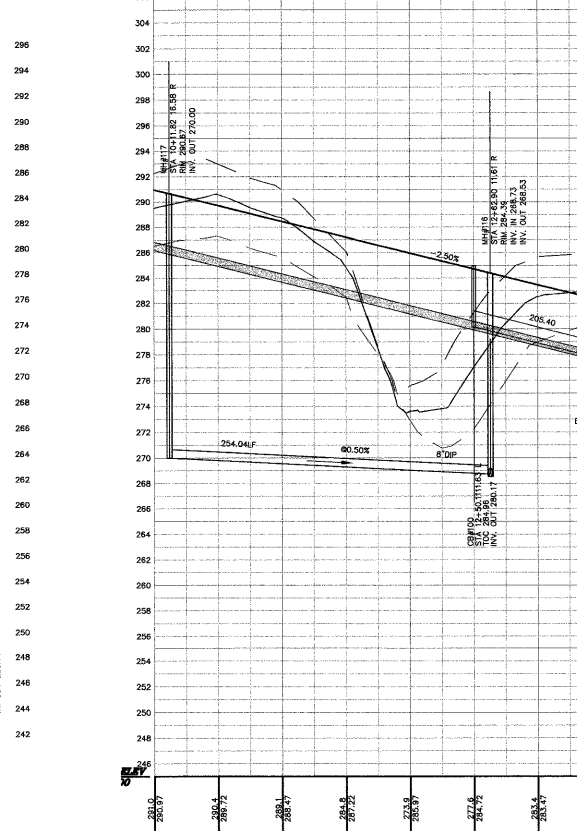


SEE SHEET C3.1.9
SAVOY PARK PLACE
 PLAN VIEW

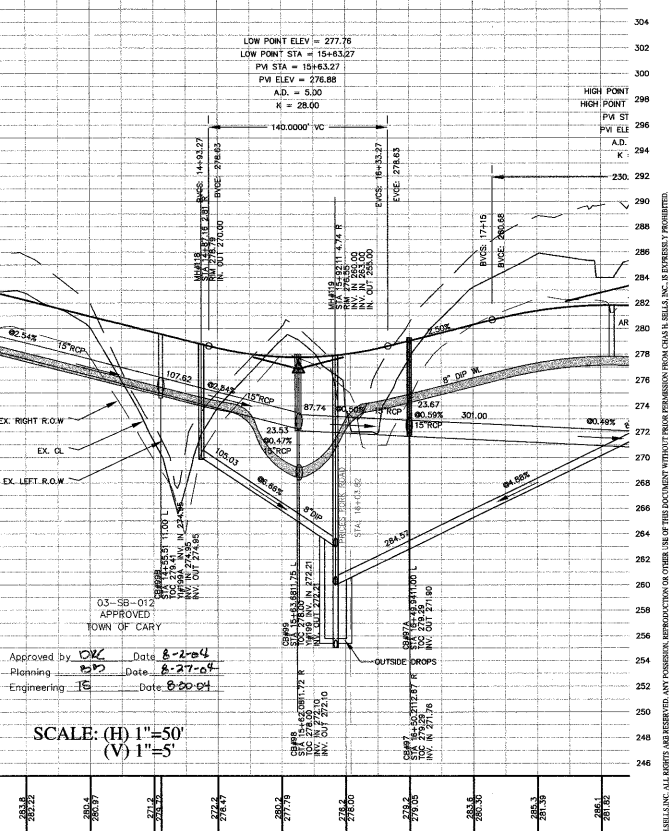
NOTES:
 ALL FIRE HYDRANTS ARE TO BE LOCATED BETWEEN THE SIDEWALK AND CURB
 ALL AIR RELEASE VALVES TO CONFORM TO "STANDARD COMBINATION AIR RELEASE MANHOLE", CARY STANDARD 6.15, SHEET 2 OF 2



PRICES FORK ROAD
 PROFILE



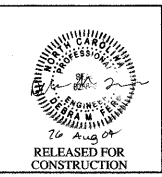
SAVOY PARK PLACE
 PROFILE



Approved by: *[Signature]* Date: 8-2-04
 Planning: *[Signature]* Date: 8-27-04
 Engineering: *[Signature]* Date: 8-20-04

SCALE: (H) 1"=50'
 (V) 1"=5'

CHAS. H. SELLS, INC.
 Consulting Engineers, Surveyors & Planners/Architects
 15300 Weston Parkway
 Suite 106
 Cary, NC 27513
 Tel: 919-678-0035
 Fax: 919-678-0206
 www.chasells.com



The Peninsula at Amberly
 Yates Store Road - Cary, NC

REVISIONS

1/5/04	REVISED PER TOC COMMENTS
2/23/04	REVISED PER TOC COMMENTS
4/5/04	REVISED PER TOC COMMENTS
Δ	REVISED - 07/28/04

PROJECT #: 03423 DATE: 11/03/03
 DRAWN BY: SLS CHECKED BY: JMS
 TITLE
 RD PLAN & PROFILES
 PRICES FORK ROAD &
 SAVOY PARK PLACE
 SHEET
C7.1.15