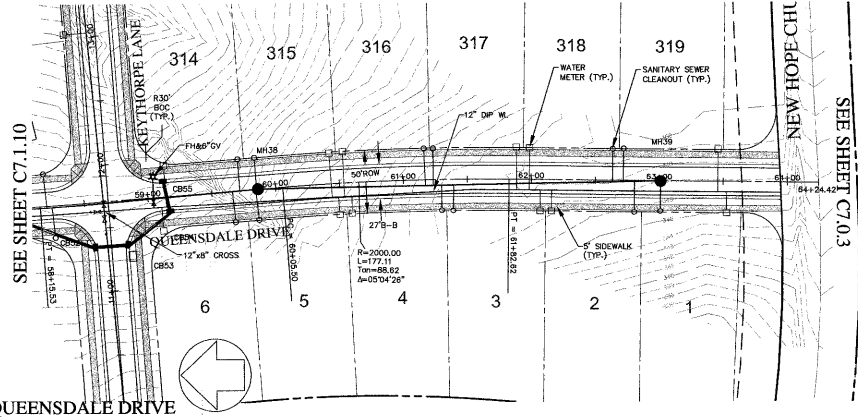


SEE SHEET C7.1.14

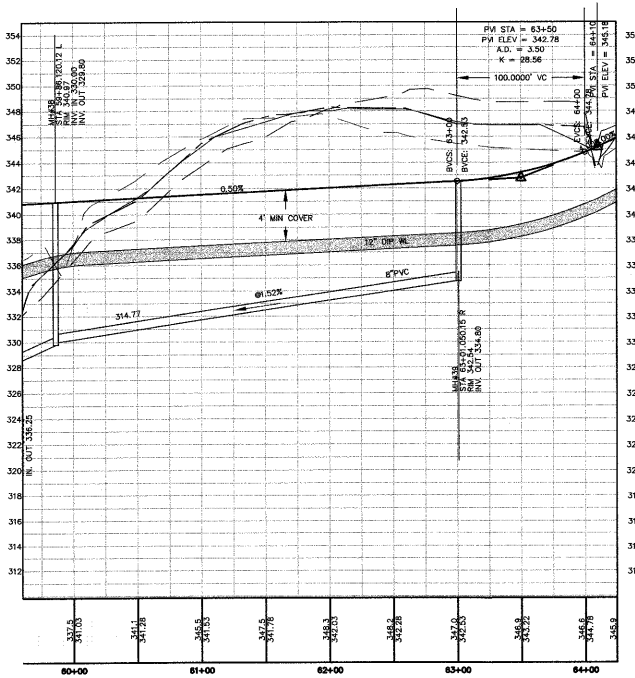


QUEENSDALE DRIVE
PLAN VIEW

NOTES:

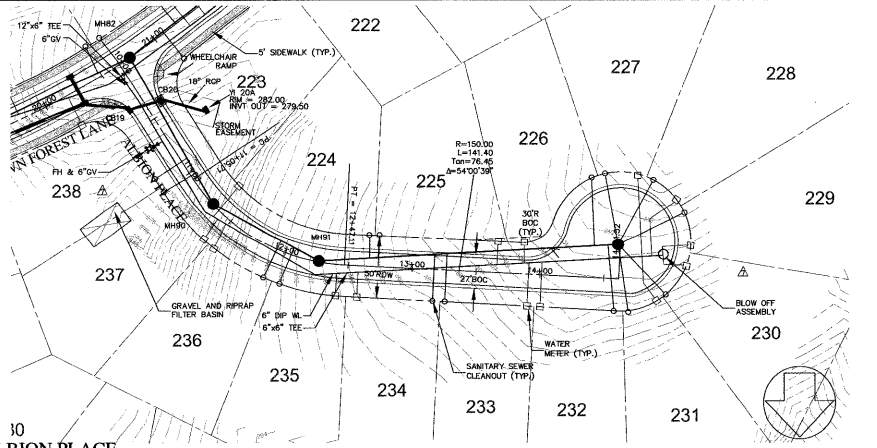
ALL FIRE HYDRANTS ARE TO BE LOCATED BETWEEN THE SIDEWALK AND CURB

ALL AIR RELEASE VALVES TO CONFORM TO "STANDARD COMBINATION AIR RELEASE MANHOLE", CARY STANDARD 6.15, SHEET 2 OF 2.

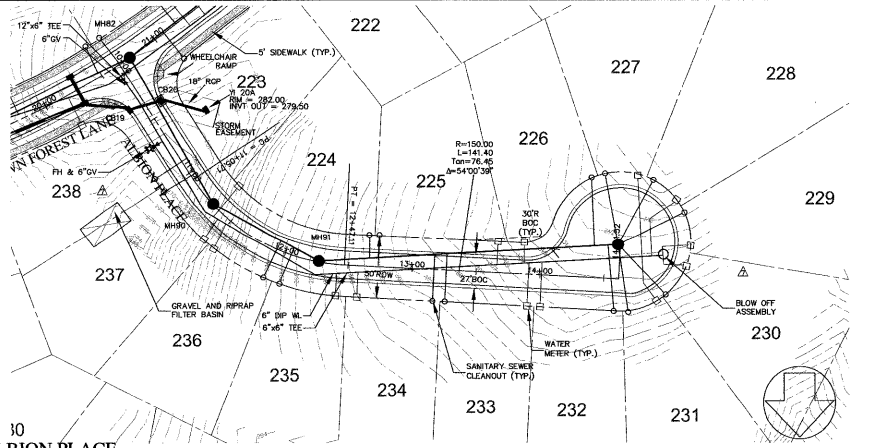


QUEENSDALE DRIVE
PROFILE

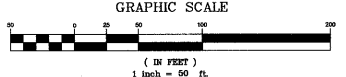
ALBION PLACE
PLAN VIEW



ALBION PLACE
PROFILE



ALBION PLACE
PROFILE



CHAS. H. SELLS, INC.
 Consulting Engineers, Surveyors & Photogrammetrists
 15300 Weston Parkway
 Cary, NC 27513
 Suite 106
 Tel: 919-678-0035
 Fax: 919-678-0206
 www.chasells.com



The Peninsula at Amberly
 Yates Store Road - Cary, NC
 GS Carolina
 11600 North Community House Road, Suite 200
 Charlotte, NC 28217

REVISIONS	
1/5/04	REVISED PER TOC COMMENTS
2/23/04	REVISED PER TOC COMMENTS
4/5/04	REVISED PER TOC COMMENTS
Δ	REVISED - 07/28/04

PROJECT #: 03423 DATE: 11/03/03
 DRAWN BY: SLS CHECKED BY: JBS
 TITLE
 RD PLAN & PROFILES
 QUEENSDALE DRIVE
 & ALBION PLACE
 SHEET
C7.1.11

03-SB-012
 APPROVED
 TOWN OF CARY
 Approved by *ORC* Date *8-1-04*
 Planning *RPB* Date *8-17-04*
 Engineering *TS* Date *8-20-04*

SCALE: (H) 1"=50'
 (V) 1"=5'

© CHASSELLE: ALL RIGHTS ARE RESERVED. ANY FURTHER REPRODUCTION OR OTHER USE OF THIS DOCUMENT WITHOUT PRIOR PERMISSION FROM CHAS. H. SELLS, INC. IS EXPRESSLY PROHIBITED.