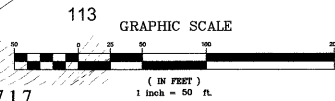


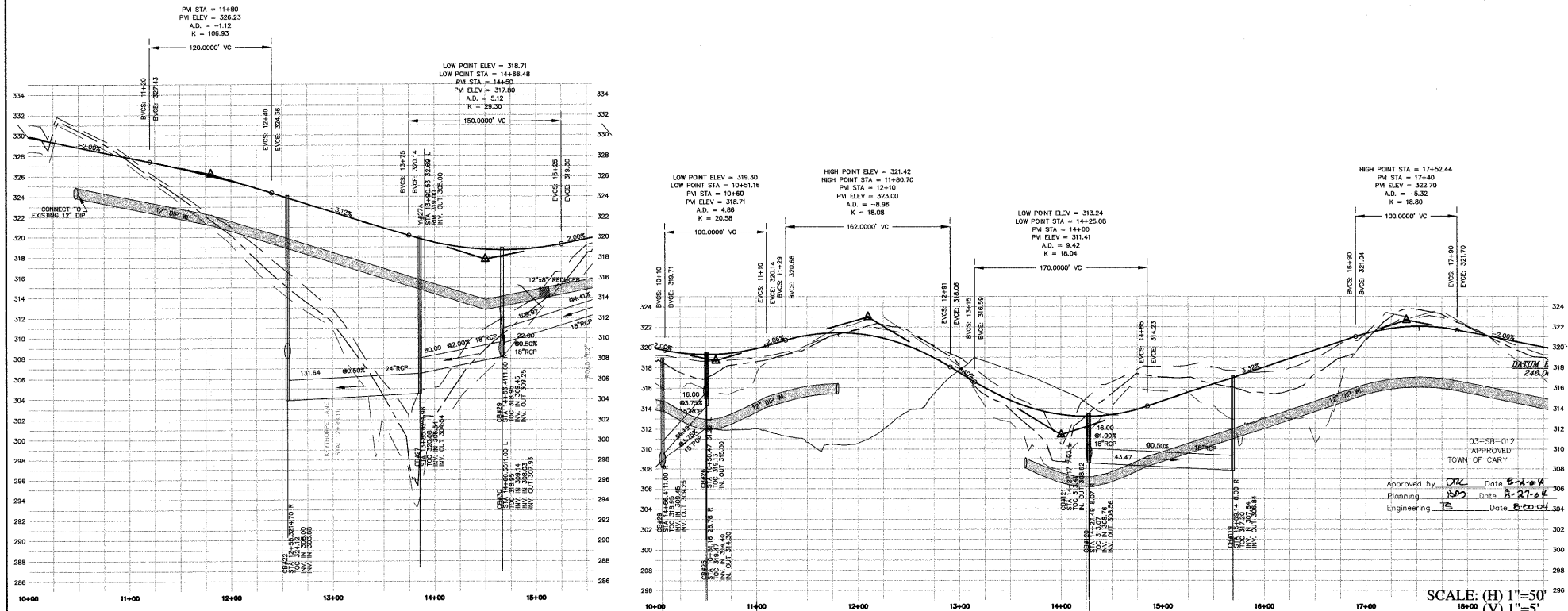
NOTES:
 ALL FIRE HYDRANTS ARE TO BE LOCATED BETWEEN THE SIDEWALK AND CURB
 ALL AIR RELEASE VALVES TO CONFORM TO "STANDARD COMBINATION AIR RELEASE MANHOLE", CARY STANDARD 6.15, SHEET 2 OF 2.



QUEENSDALE DRIVE
 PLAN VIEW

SEE SHEET C7.1.2

SEE SHEET C7.1.7



QUEENSDALE DRIVE
 (YATES STORE ROAD TO CIRCULAR SECTION)
 PROFILE

QUEENSDALE DRIVE
 (CIRCULAR SECTION)
 PROFILE

SCALE: (H) 1"=50'
 (V) 1"=5'

CHAS. H. SELLS, INC.
 Consultant Engineers, Surveyors & Photogrammetrists
 15500 Weston Parkway
 Suite 106
 Cary, NC 27513
 Tel: 919-678-0035
 Fax: 919-678-0206
 www.chsells.com

RELEASED FOR CONSTRUCTION

The Peninsula at Amberly
 Yates Store Road - Cary, NC

REVISIONS	DATE	REVISIONS
1/5/04	REVISED PER TOC COMMENTS	
2/23/04	REVISED PER TOC COMMENTS	
4/5/04	REVISED PER TOC COMMENTS	
Δ	REVISED - 05/17/04	
Δ	REVISED - 07/28/04	

PROJECT #: 03423 DATE: 11/03/03
 DRAWN BY: SLS CHECKED BY: RBH
 TITLE:
 ROAD
 PLAN & PROFILES
 QUEENSDALE DRIVE
 SHEET
C7.1.6

© 2004 CHS SELLS, INC. ALL RIGHTS ARE RESERVED. ANY REPRODUCTION OR OTHER USE OF THIS DOCUMENT WITHOUT PERMISSIVE WRITTEN PERMISSION FROM CHAS. H. SELLS, INC. IS EXPRESSLY PROHIBITED.

GS Carolina
 11600 North Community House Road, Suite 200
 Charlotte, NC 28277