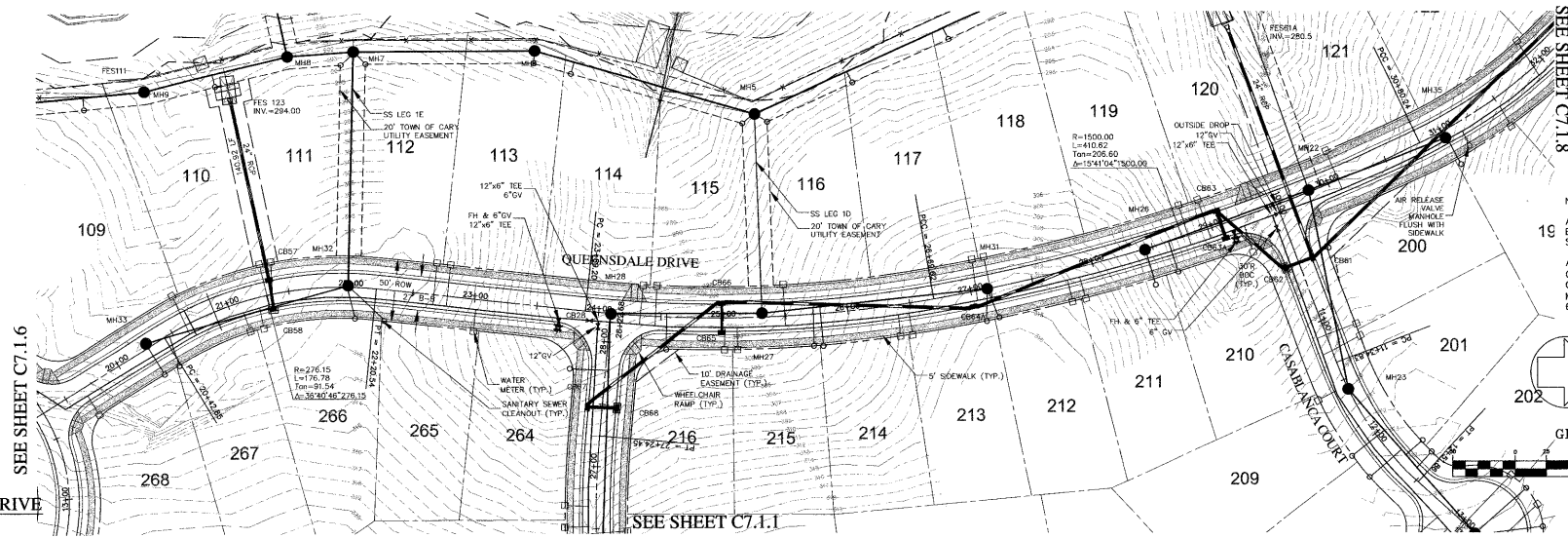


QUEENSDALE DRIVE
PLAN VIEW

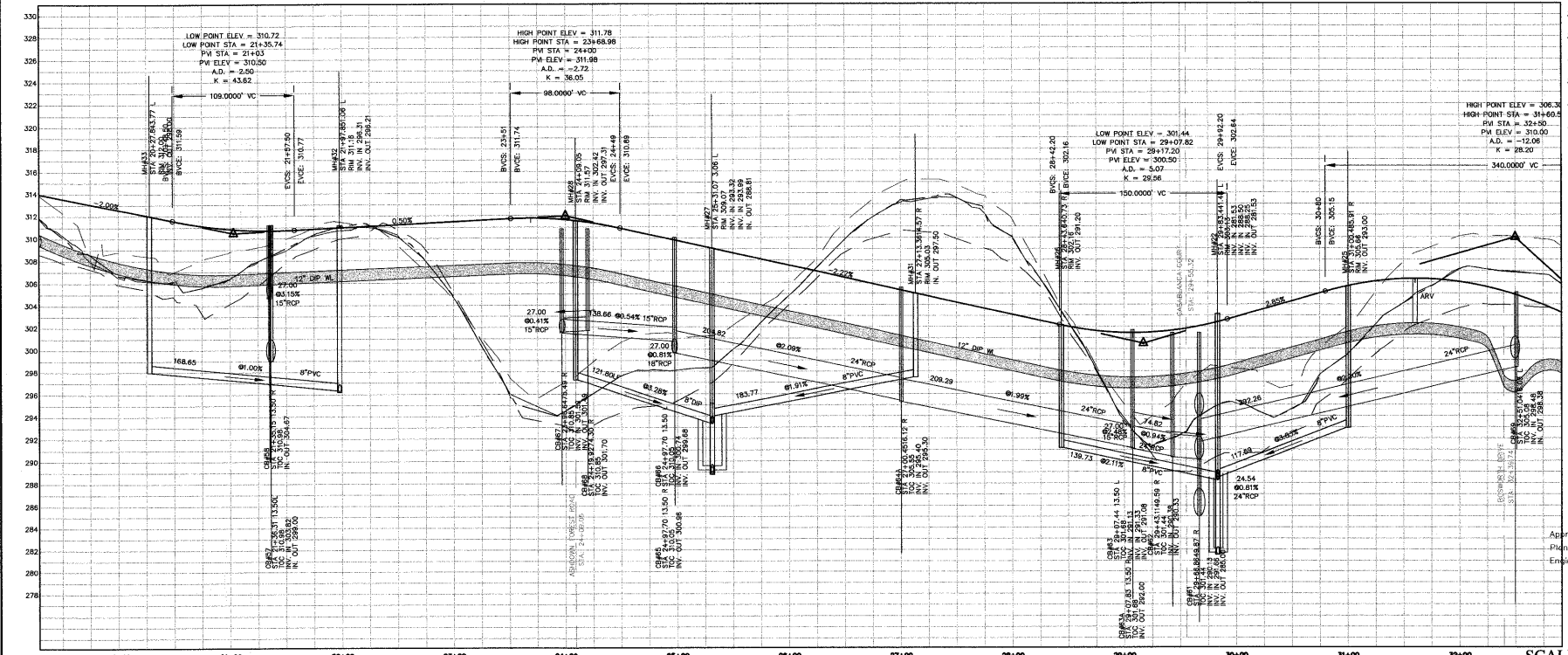
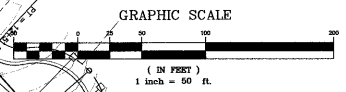


SEE SHEET C7.1.6

SEE SHEET C7.1.1

SEE SHEET C7.1.8

NOTES:
19 ALL FIRE HYDRANTS ARE TO BE LOCATED BETWEEN THE SIDEWALK AND CURB
20 ALL AIR RELEASE VALVES TO CONFORM TO "STANDARD COMBINATION AIR RELEASE MANHOLE" - CARY STANDARD 6.15, SHEET 2 OF 2.



QUEENSDALE DRIVE
PROFILE

SCALE: (H) 1"=50'
(V) 1"=5'

CHAS. H. SELLS, INC.
Consulting Engineers, Surveyors & Photogrammetrists
15300 Weston Parkway
Suite 106
Cary, NC 27513
Tel: 919-678-0035
Fax: 919-678-0206
www.chasells.com



The Peninsula at Amberly
Yates Store Road - Cary, NC
11600 North Community House Road, Suite 200
Chapel Hill, NC 28377

REVISIONS	
1/5/04	REVISED PER TOC COMMENTS
2/23/04	REVISED PER TOC COMMENTS
4/5/04	REVISED PER TOC COMMENTS
Δ	REVISED - 05/17/04
Δ	3/6/21/04 - ADDED WL TO PROFILE

03-SB-012
APPROVED
TOWN OF CARY
Approved by: *TE* Date: *8-27-04*
P: *TE* Date: *8-27-04*
Engineering: *TE* Date: *8-27-04*

PROJECT #: 03423 DATE: 11/03/03
DRAWN BY: SLS CHECKED BY: JBE
TITLE:
ROAD
PLAN & PROFILES
QUEENSDALE DRIVE
SHEET
C7.1.7

© CHAS SELLS, INC. ALL RIGHTS ARE RESERVED. ANY REPRODUCTION OR OTHER USE OF THIS DOCUMENT WITHOUT THE WRITTEN PERMISSION FROM CHAS H. SELLS, INC. IS EXPRESSLY PROHIBITED.