

SEE SHEET C7.1.8

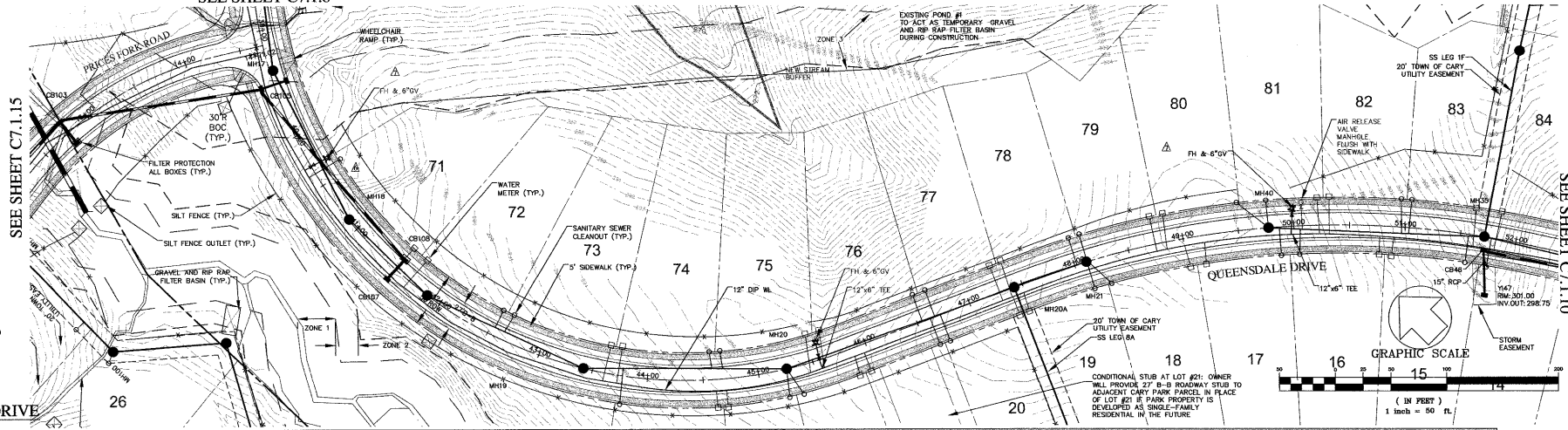
SEE SHEET C7.1.15

SEE SHEET C7.1.10

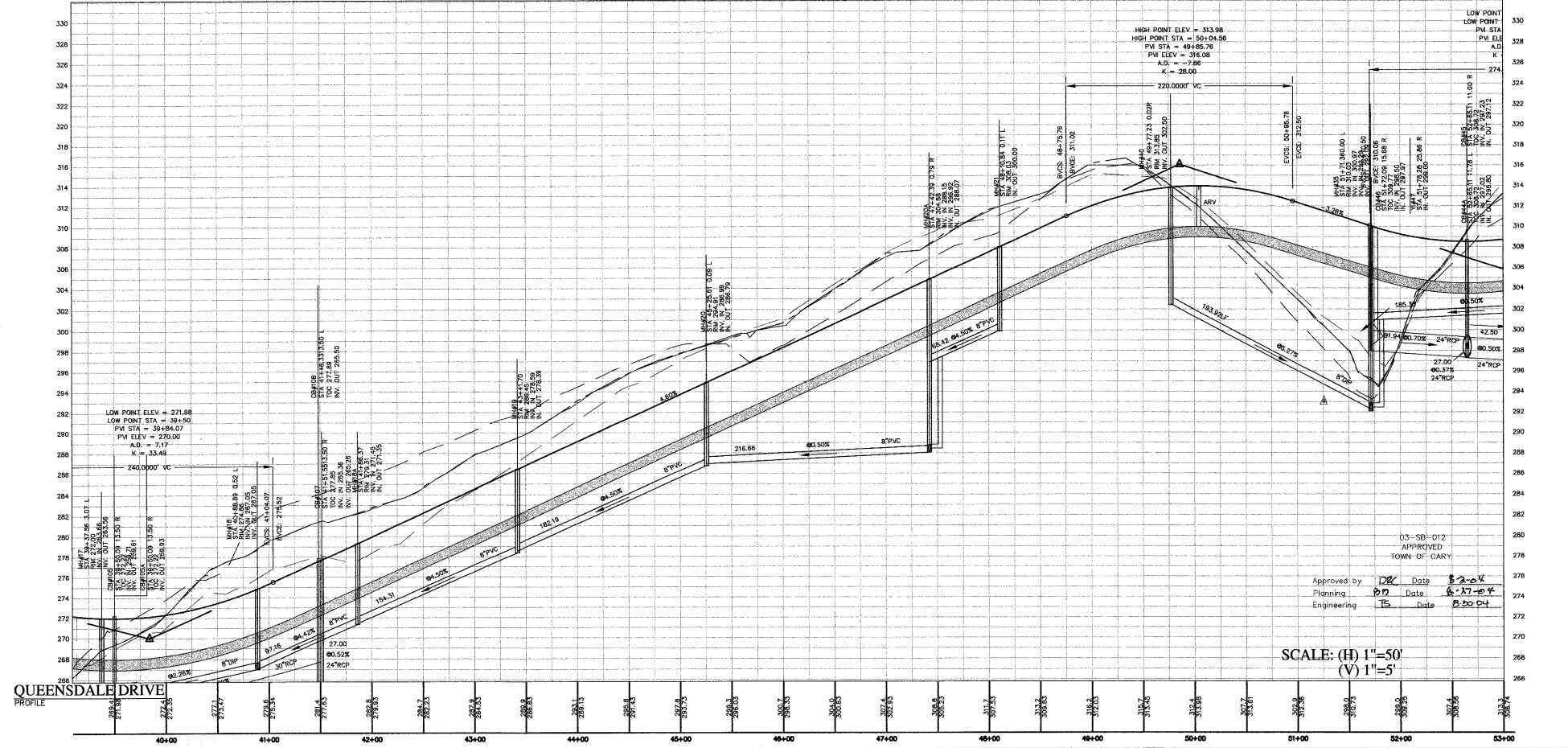
NOTES:

- ALL FIRE HYDRANTS ARE TO BE LOCATED BETWEEN THE SIDEWALK AND CURB.
- ALL AIR RELEASE VALVES TO CONFORM TO "STANDARD COMBINATION AIR RELEASE MANHOLE", CARY STANDARD 6.15, SHEET 2 OF 2.

QUEENSDALE DRIVE  
PLAN VIEW



CONDITIONAL STUB AT LOT #21: OWNER WILL PROVIDE 27' B-B ROADWAY STUB TO ADJACENT CARY PARK PARCEL IN PLACE OF LOT #21 IF PARK PROPERTY IS DEVELOPED AS SINGLE-FAMILY RESIDENTIAL IN THE FUTURE.



SCALE: (H) 1"=50'  
(V) 1"=5'

03-SB-012  
APPROVED  
TOWN OF CARY  
Approved by: [Signature] Date: 8-2-04  
Planning: [Signature] Date: 8-17-04  
Engineering: [Signature] Date: 8-20-04



The Peninsula at Amberly  
Yates Store Road - Cary, NC

GS Carolina  
11600 North Community House Road, Suite 200  
Charlotte, NC 28277

REVISIONS	
1/5/04	REVISED PER TOC COMMENTS
2/23/04	REVISED PER TOC COMMENTS
4/5/04	REVISED PER TOC COMMENTS
△	REVISED - 06/21/04
△	REVISED SS LEG 1B 7/16/04
△	REVISED - 07/28/04

PROJECT #: 0423 DATE: 11/03/03  
DRAWN BY: SLS CHECKED BY: JHH

TITLE:  
ROAD  
PLAN & PROFILES  
QUEENSDALE DRIVE

SHEET  
C7.1.9

**CHAS. H. SELLS, INC.**  
CONSULTING ENGINEERS, SURVEYORS & PHOTOGRAMMETS  
15300 Weston Parkway  
Cary, NC 27513  
Suite 106  
Tel: 919-678-0035  
Fax: 919-678-0206  
www.chasells.com

© CHAS SELLS, INC. ALL RIGHTS ARE RESERVED. ANY REPRODUCTION OR OTHER USE OF THIS DOCUMENT WITHOUT PRIOR PERMISSION FROM CHAS. H. SELLS, INC. IS EXPRESSLY FORBIDDEN.