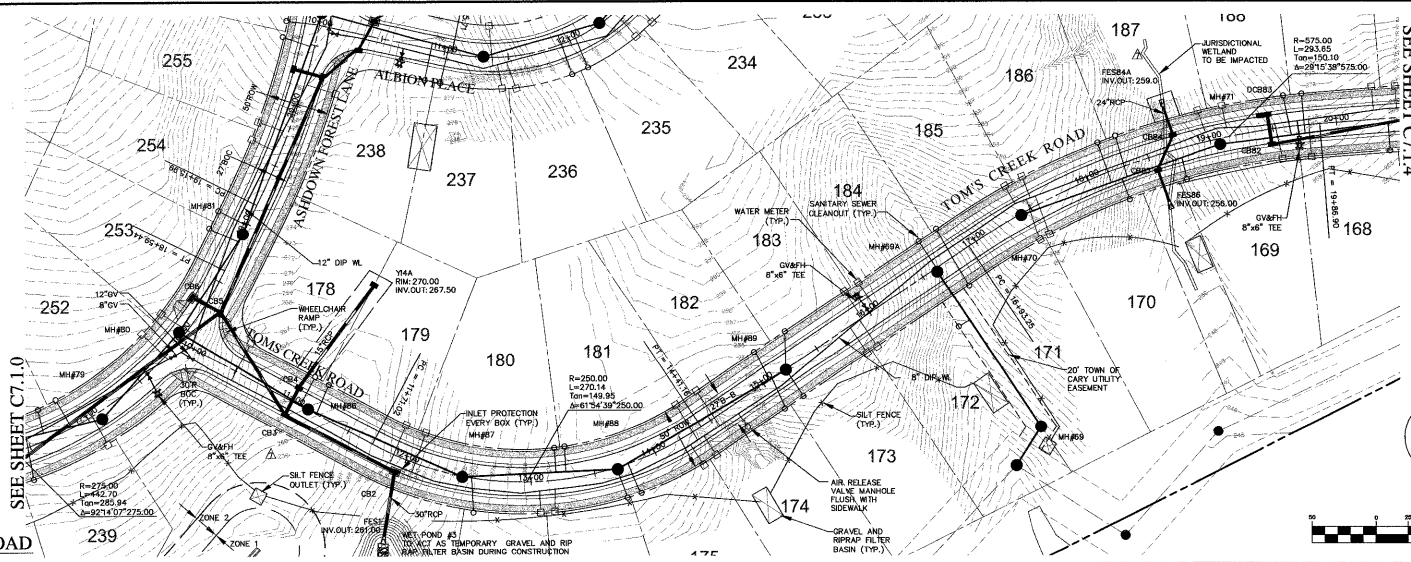
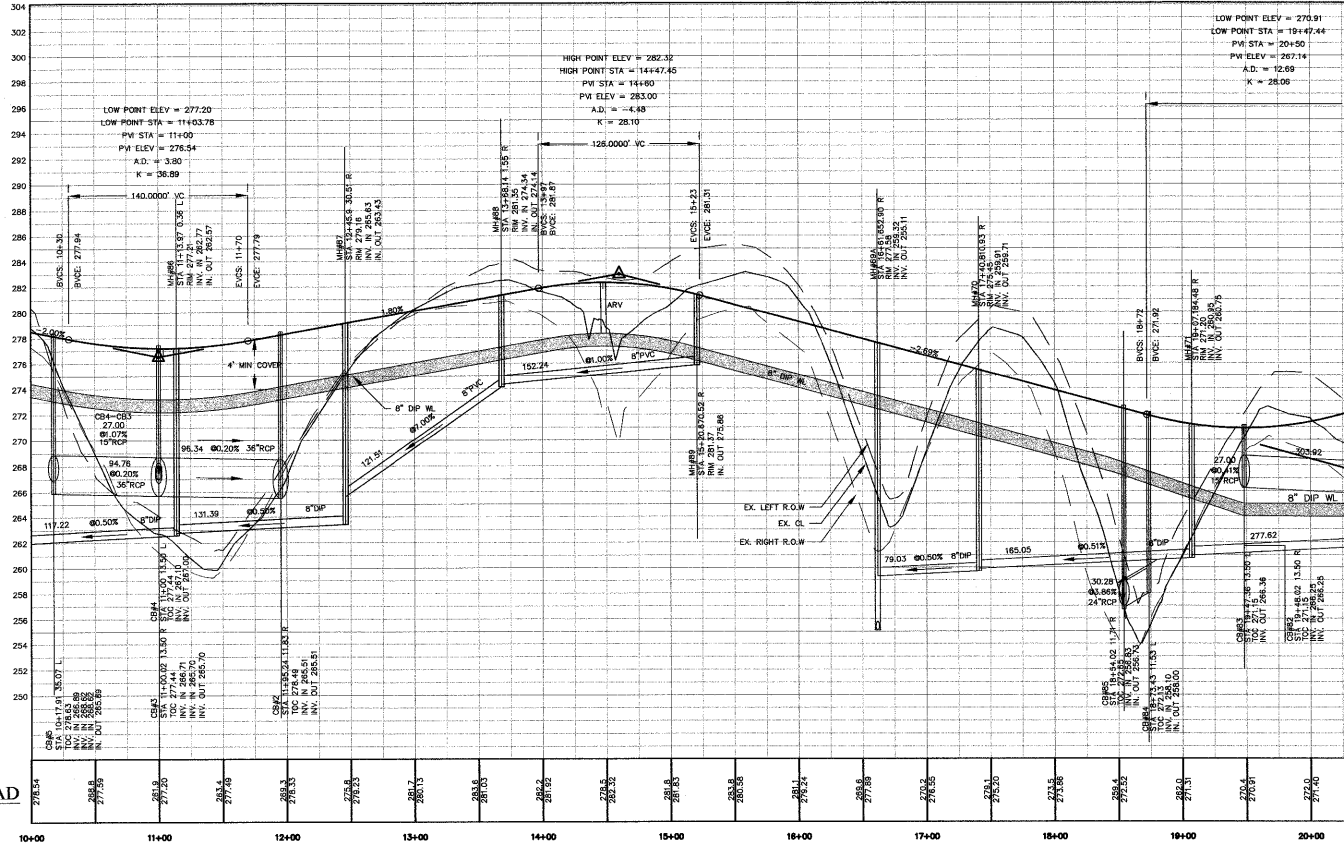


NOTES:
 ALL FIRE HYDRANTS ARE TO BE LOCATED BETWEEN THE SIDEWALK AND CURB
 ALL AIR RELEASE VALVES TO CONFORM TO "STANDARD COMBINATION AIR RELEASE MANHOLE", CARY STANDARD 6.15, SHEET 2 OF 2.



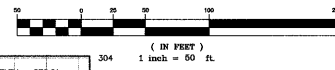
TOMS CREEK ROAD
 PLAN VIEW



TOMS CREEK ROAD
 PROFILE

SEE SHEET C7.1.4

SEE SHEET C7.1.0



03-SB-012
 APPROVED
 TOWN OF CARY
 Approved by: [Signature] Date: 8-2-24
 Planning: [Signature] Date: 8-17-24
 Engineering: [Signature] Date: 8-20-24

SCALE: (H) 1"=50'
 (V) 1"=5'

CHAS. H. SELLS, INC.
 Consulting Engineer, Surveyor & Soil Remediation
 15500 Western Parkway, Suite 106
 Cary, NC 27513
 Tel: 919-678-0035
 Fax: 919-678-0206
 www.chsellss.com

RELEASED FOR CONSTRUCTION
 26 Aug 24

The Peninsula at Amberly
 Yates Store Road - Cary, NC
 11600 North Community House Road, Suite 200
 Charlotte, NC 28277

REVISIONS
 1/5/04 REVISED PER TOC COMMENTS
 2/23/04 REVISED PER TOC COMMENTS
 4/5/04 REVISED PER TOC COMMENTS
 8/1/04 REVISED - 05/17/04
 8/1/04 REVISED - 07/26/04

PROJECT #: 03423 DATE: 11/08/03
 DRAWN BY: SLS CHECKED BY: JBE
 TITLE: ROAD PLAN & PROFILES TOMS CREEK ROAD
 SHEET: C7.1.3

© CHAS. H. SELLS, INC. ALL RIGHTS ARE RESERVED. ANY REPRODUCTION OR OTHER USE OF THIS DOCUMENT WITHOUT PRIOR PERMISSION FROM CHAS. H. SELLS, INC. IS EXPRESSLY FORBIDDEN.