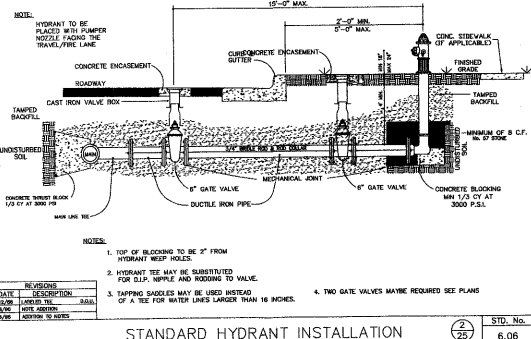


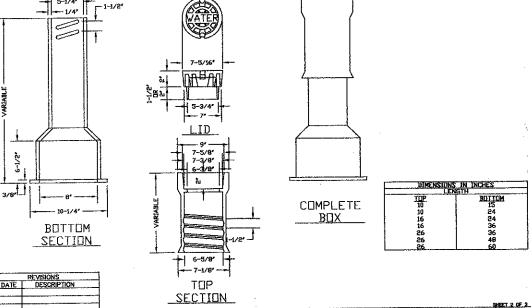
NOTES:

- Trenches requiring shoring and bracing, dimensions shall be taken from the inside face of the shoring and bracing.
- No rocks or boulders 4' or larger to be used in initial backfill.
- All backfill material shall be suitable native material.
- Backfill shall be tamped in 6" lifts in traffic areas, 12" in non-traffic areas.
- Achieve 80% compaction in non-traffic areas, and 95% compaction in traffic areas.
- If in easement 4' topsoil, and 12" clean select fill is required.
- No boulders 6" in diameter or greater allowed.

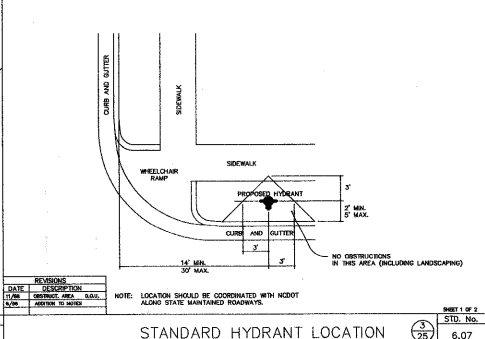
TRENCH BOTTOM DIMENSIONS & BACKFILLING REQUIREMENTS FOR DUCTILE IRON AND REINFORCED CONCRETE PIPE.



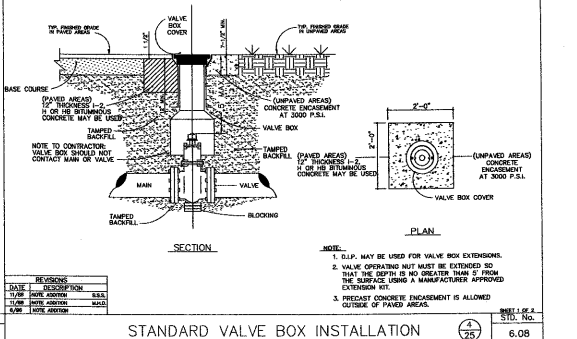
STANDARD HYDRANT INSTALLATION (2/25) STD. No. 6.06



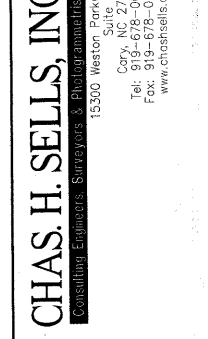
STANDARD HYDRANT LOCATION (2/25) STD. No. 6.07



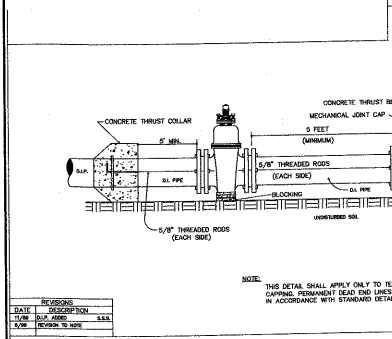
STANDARD VALVE BOX INSTALLATION (2/25) STD. No. 6.08



STANDARD VALVE RODDING (2/25) STD. No. 6.09



STANDARD 2" BLOW-OFF ASSEMBLY (2/25) STD. No. 6.11



STANDARD CAPPING DETAIL (2/25) STD. No. 6.12

MINIMUM CONCRETE BLOCKING (C.Y.) *

HOUL. PIPE DIA. IN.	TEES & DEAD ENDS	90° BEND	45° BEND	22-1/2° BEND	11-1/4° BEND
4	1/3	1/3	1/3	1/3	1/3
6	1/3	1/3	1/3	1/3	1/3
8	1/3	1/2	1/3	1/3	1/3
10	2/3	3/4	1/2	1/3	1/3
12	3/4	1.0	2/3	1/3	1/3
14	1.0	1-1/2	3/4	1/2	1/3
16	1-1/3	2.0	1.0	1/2	1/3
18	1-2/3	2-1/3	1-1/3	2/3	1/3
20	2.0	3.0	1-2/3	3/4	1/2
24	3.0	4-1/3	2-1/3	1-1/3	2/3

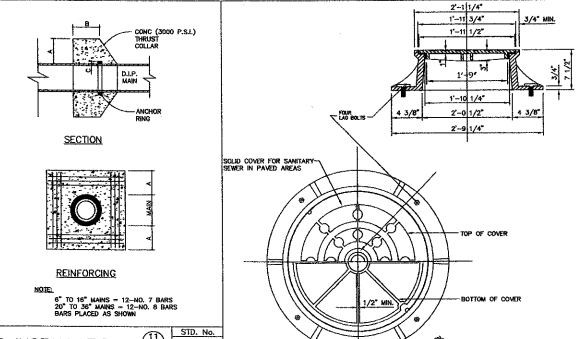
* CONCRETE SHALL BE 3000 P.S.I.

STANDARD REACTION BLOCKING (10/25) STD. No. 6.13

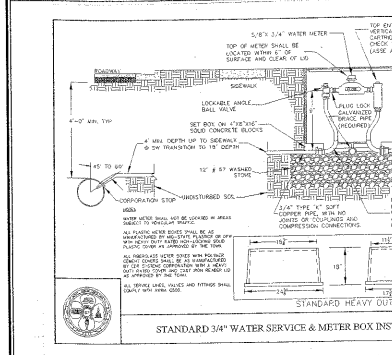
SCHEDULE

PIPE DIAMETER	CONCRETE THRUST COLLAR	ANCHOR BARS	REINFS REQUIRED
8" x 12"	1'-0"	1'-0"	ONE
10"	1'-0"	1'-0"	ONE
12"	1'-0"	1'-0"	ONE
14"	1'-0"	1'-0"	TWO
16"	1'-0"	1'-0"	TWO

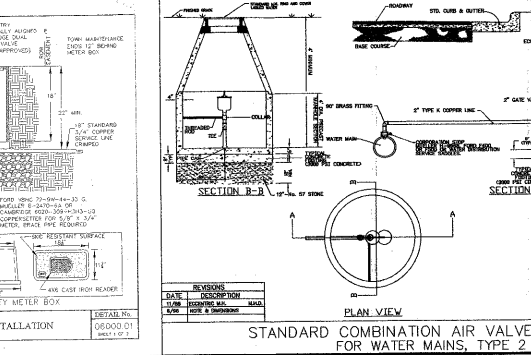
STANDARD THRUST COLLAR INSTALLATION (11/25) STD. No. 6.14



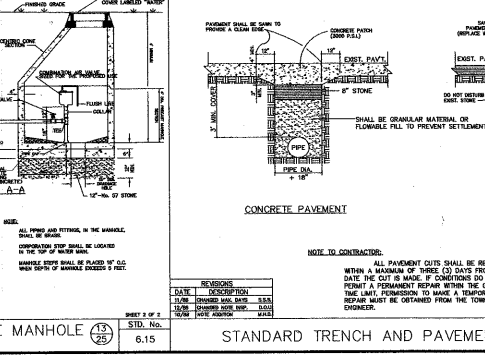
STANDARD MANHOLE RING AND COVER (TYPE I PAVED AREAS) (10/25) STD. No. 7.03



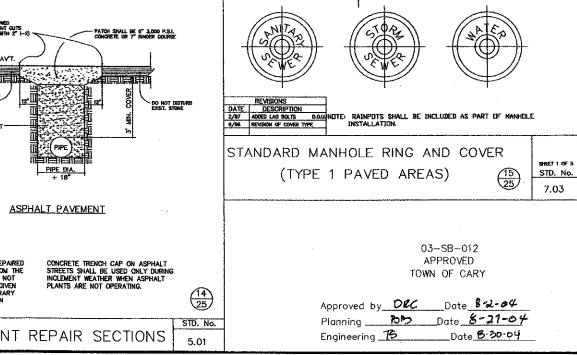
STANDARD 3/4" WATER SERVICE & METER BOX INSTALLATION (DETAIL NO. 034002-01) SHEET 1 OF 2



STANDARD COMBINATION AIR VALVE MANHOLE FOR WATER MAINS, TYPE 2 (10/25) STD. No. 6.15



STANDARD TRENCH AND PAVEMENT REPAIR SECTIONS (10/25) STD. No. 6.01



STANDARD MANHOLE RING AND COVER (TYPE I PAVED AREAS) (10/25) STD. No. 7.03

CHAS. H. SELLS, INC.
 CONSULTING ENGINEERS - SURVEYORS - PHOTOGRAMMETRISTS
 15300 Westport Parkway
 Cary, NC 27513
 Tel: 919-678-0035
 Fax: 919-678-0206
 www.chasells.com

RELEASED FOR CONSTRUCTION

The Peninsula at Amberly
 Yates Store Road - Cary, NC

GS Carolina
 11600 North Community House Road, Suite 200
 Charlotte, NC 28217

REVISIONS

NO.	DATE	DESCRIPTION
1/5/04		REVISED PER TOC COMMENTS
2/23/04		REVISED PER TOC COMMENTS
4/5/04		REVISED PER TOC COMMENTS

PROJECT #: 03423 DATE: 11/03/03
 DRAWN BY: SLS CHECKED BY: JBB
 TITLE: UTILITY DETAIL SHEET
 SHEET: C9.2

Approved by: DEC Date: 8-2-04
 Planning: RDB Date: 8-27-04
 Engineering: JB Date: 8-20-04