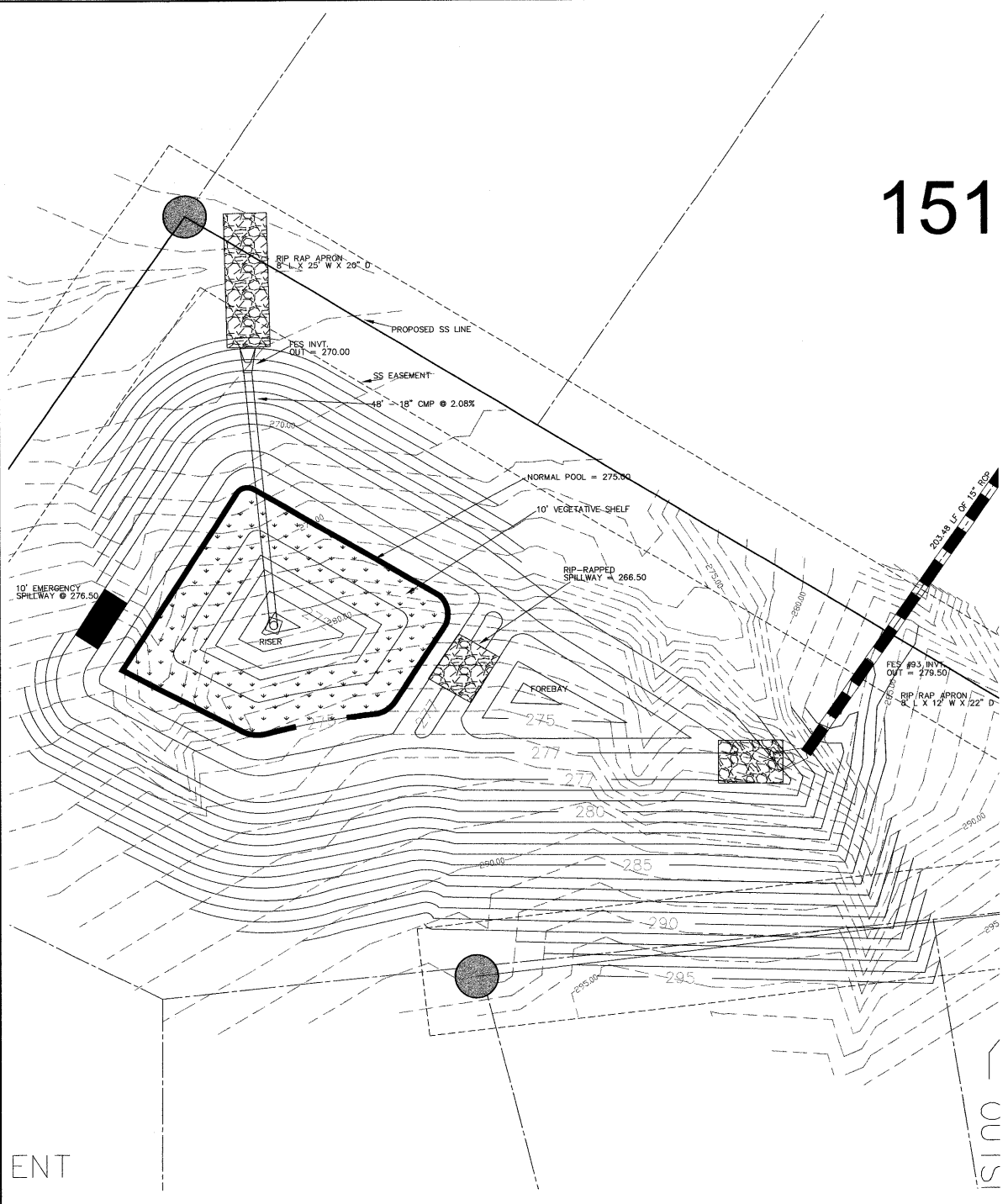
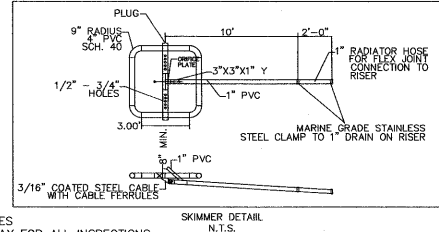
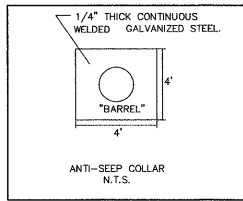
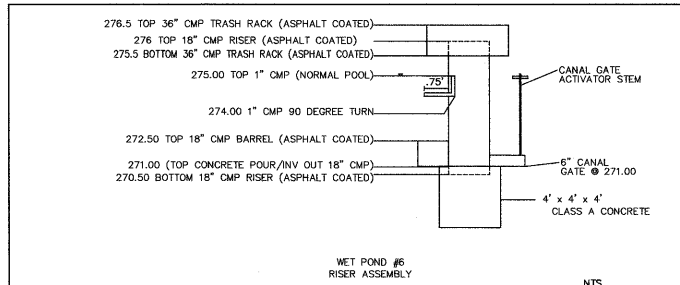
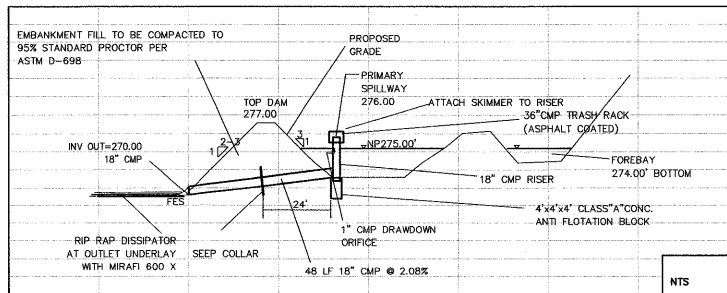


151



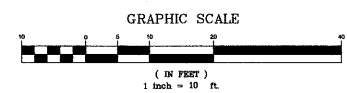
POND DAM & RISER ASSEMBLY



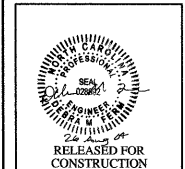
- GENERAL SITE NOTES**
1. THE CONTRACTOR SHALL OBTAIN AND PAY FOR ALL INSPECTIONS, CERTIFICATIONS, EQUIPMENT, ETC. THAT MAY BE REQUIRED.
 2. THE CONTRACTOR SHALL NOTE THAT THE DRAWINGS ARE SCHEMATIC IN NATURE AND DO NOT SHOW EVERY OFFSET, TRANSITION, FITTING, ETC. THAT MAY BE REQUIRED FOR A COMPLETE AND WORKING SYSTEM.
 3. THE ENGINEER AND/OR OWNER DISCLAIM ANY ROLE IN THE CONSTRUCTION MEANS AND METHODS ASSOCIATED WITH THE PROJECT AS SET FORTH IN THESE PLANS.
 4. CONTRACTOR SHALL MAINTAIN AN "AS BUILT" SET OF DRAWINGS TO RECORD THE EXACT LOCATION OF ALL PIPING PRIOR TO CONCEALMENT. DRAWINGS SHALL BE GIVEN TO THE ENGINEER UPON COMPLETION OF THE PROJECT WITH A COPY OF THE TRANSMITTAL LETTER TO THE OWNER.
 5. IF DEPARTURES FROM THE SPECIFICATIONS OR DRAWINGS ARE DEEMED NECESSARY BY THE CONTRACTOR, DETAILS OF SUCH DEPARTURES AND REASONS THEREOF SHALL BE SUBMITTED TO THE ENGINEER FOR REVIEW. NO DEPARTURES FROM THE CONTRACT DOCUMENTS SHALL BE MADE WITHOUT THE WRITTEN PERMISSION OF THE OWNER.
 6. THE CONTRACTOR MUST, AT ALL TIMES, KEEP THE PREMISES FREE FROM ACCUMULATIONS OF WASTE MATERIALS OR RUBBISH CAUSED BY HIM, HIS EMPLOYEES OR HIS WORK. ALL DEBRIS SHALL BE REMOVED FROM THE PROJECT SITE ON A DAILY BASIS.

03-SB-012
APPROVED
TOWN OF CARY

Approved by: QEC Date: 8-1-08
Planning: RPD Date: 8-17-04
Engineering: TS Date: 8-20-04



CHAS. H. SELLS, INC.
Consulting Engineers, Surveyors & Photogrammetrists
15,300 Weston Parkway
Suite 106
Cary, NC 27513
Tel: 919-678-0005
Fax: 919-678-0006
www.chasells.com



The Peninsula at Amberly
Yates Store Road - Cary, NC

GS Carolina
11600 North Community House Road, Suite 200
Charlotte, NC 28217

REVISIONS	
1/5/04	REVISED PER TOC COMMENTS
2/23/04	REVISED PER TOC COMMENTS
4/5/04	REVISED PER TOC COMMENTS

PROJECT #: 00425 DATE: 11/03/03
DRAWN BY: SLS CHECKED BY: JHE
TITLE:

**WET POND #6
DETAIL SHEET**
SHEET
C4.1.6

ENT

15100

© CHASSELLS, INC. ALL RIGHTS ARE RESERVED. ANY REPRODUCTION OR OTHER USE OF THIS DOCUMENT WITHOUT PRIOR PERMISSION FROM CHAS. H. SELLS, INC. IS EXPRESSLY PROHIBITED.