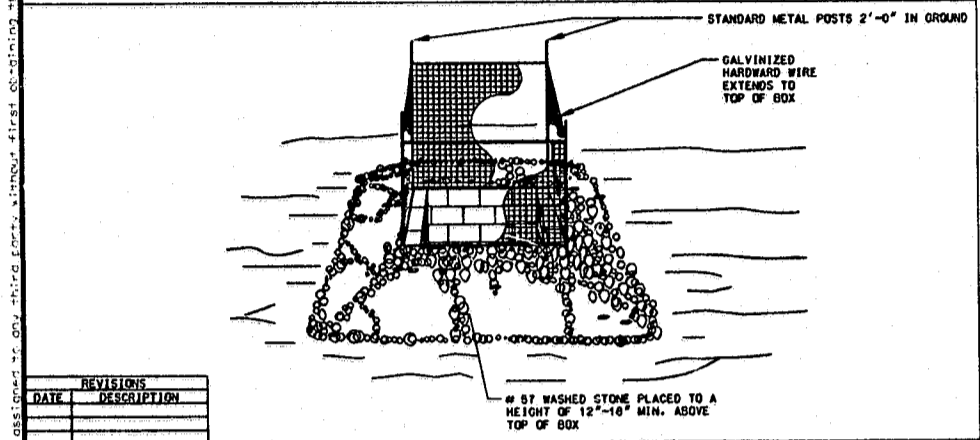
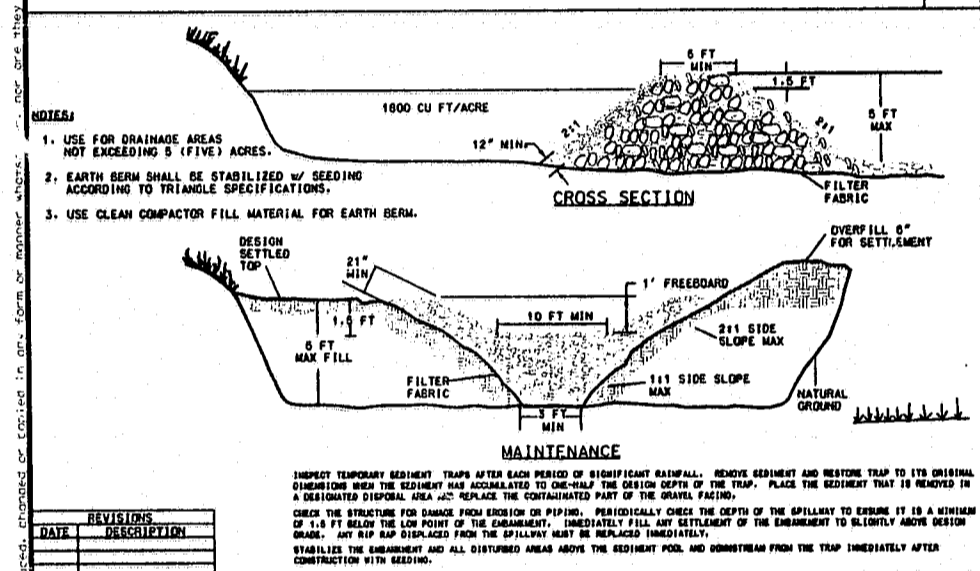


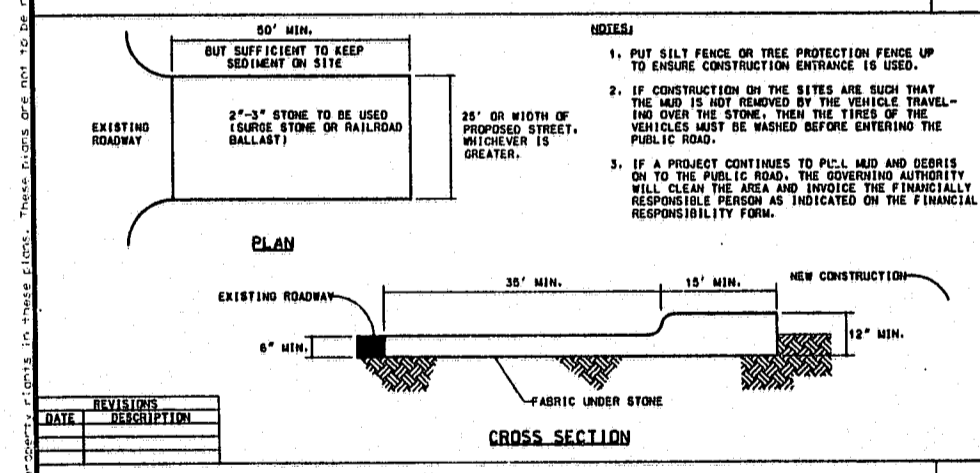
STANDARD TEMPORARY SILT FENCE 1



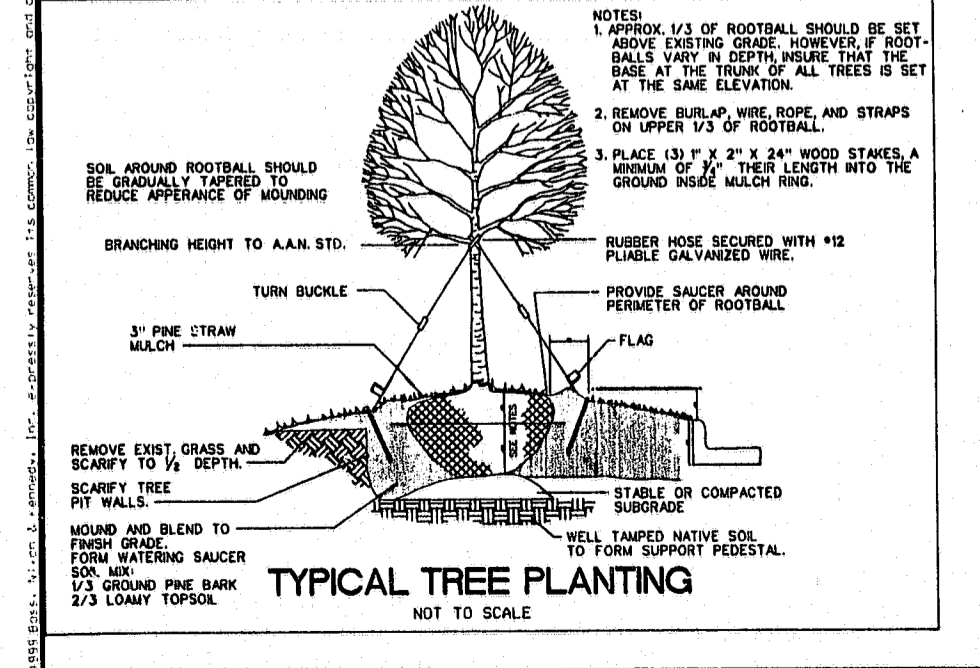
STANDARD CATCH BASIN/YARD INLET PROTECTION 14



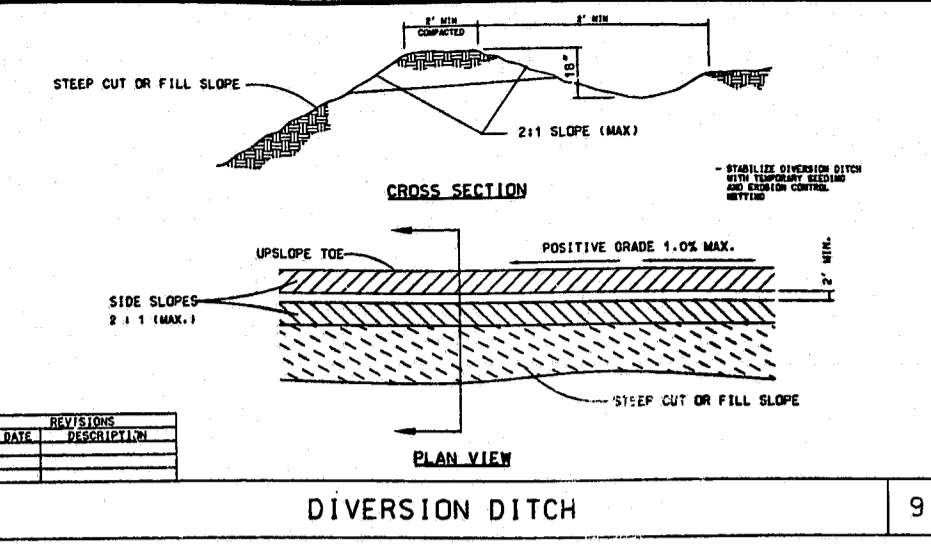
GRAVEL & RIP RAP BASIN/OUTLET 3A



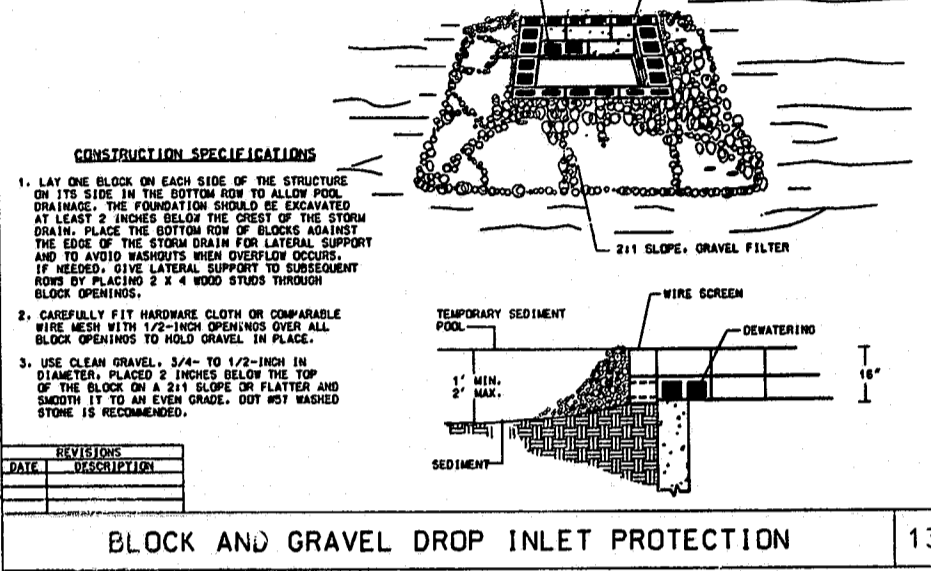
CONSTRUCTION ENTRANCE 7



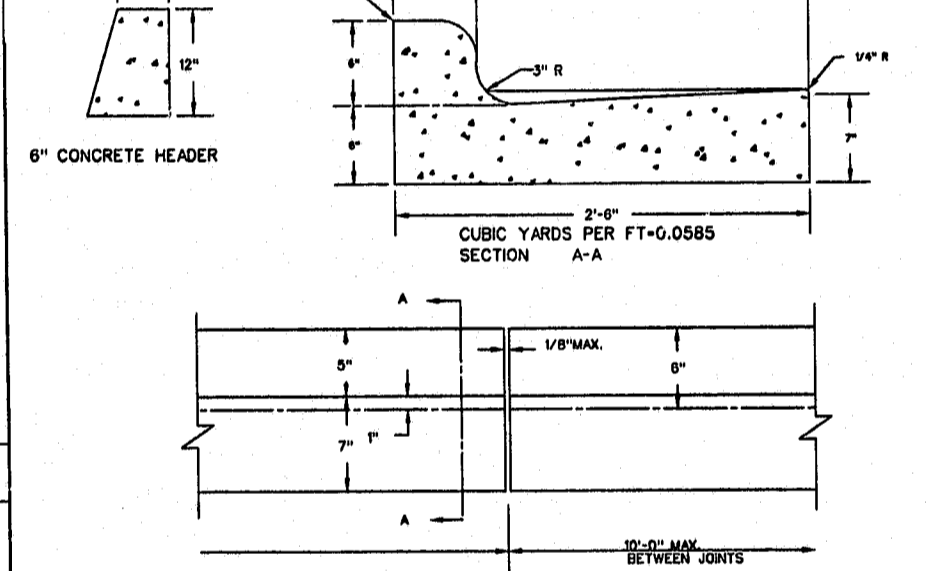
TYPICAL TREE PLANTING NOT TO SCALE



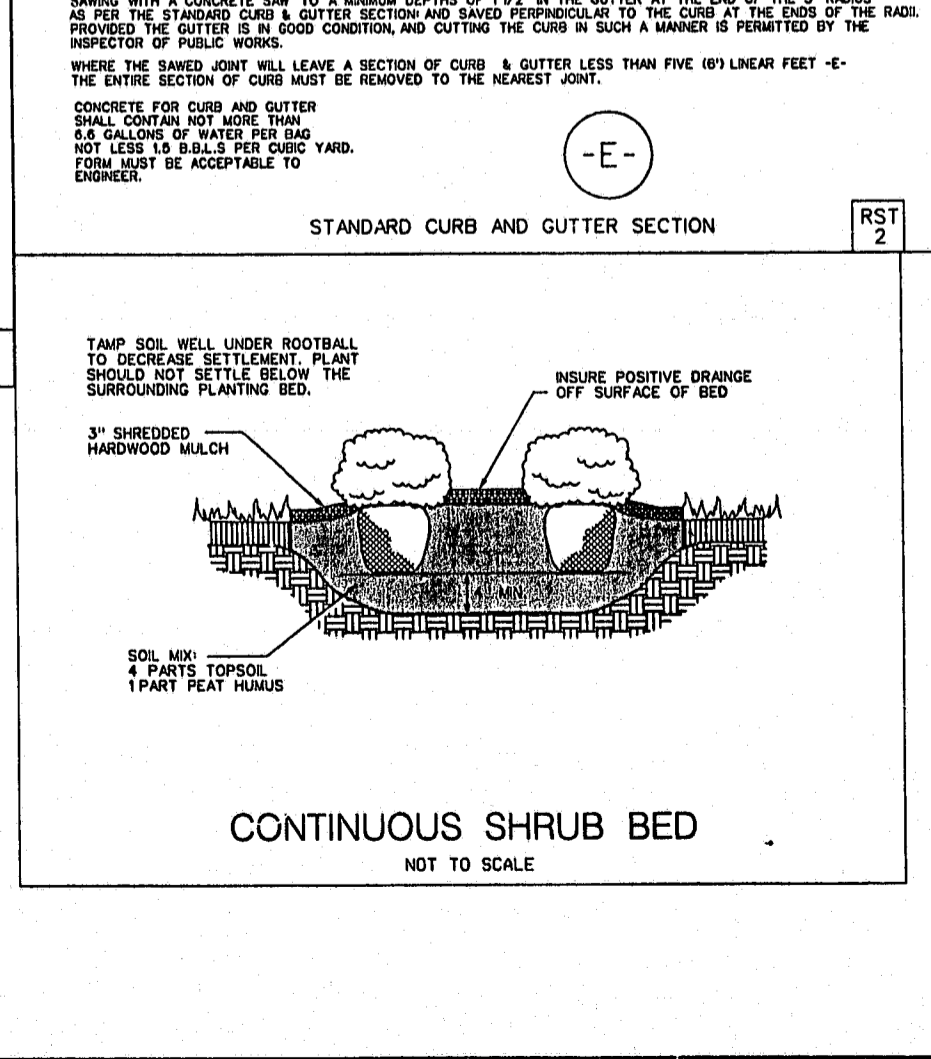
DIVERSION DITCH 9



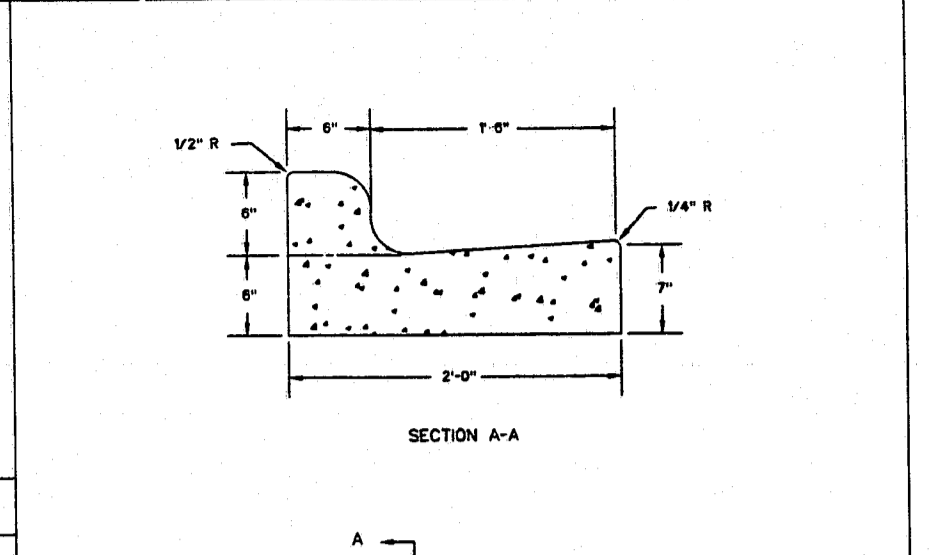
BLOCK AND GRAVEL DROP INLET PROTECTION 13



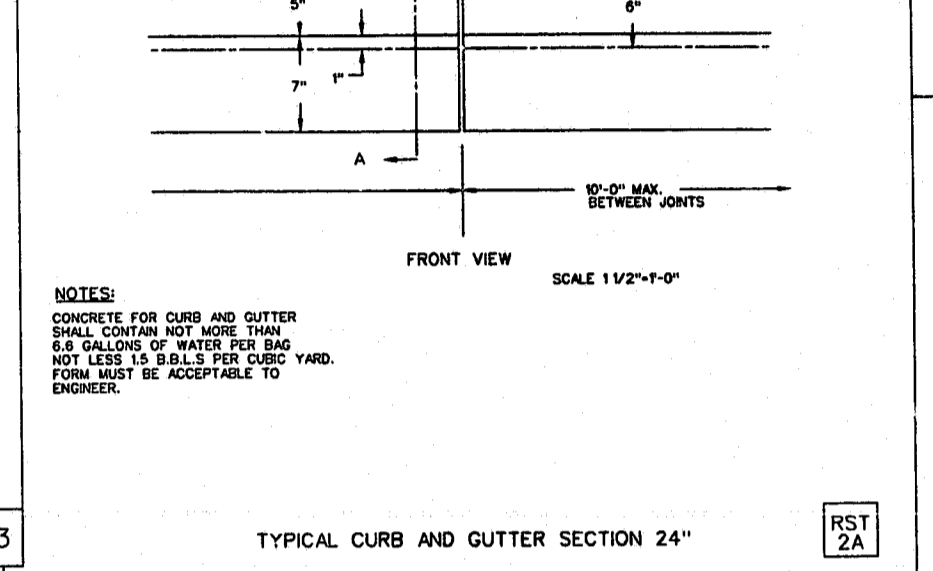
STANDARD CURB AND GUTTER SECTION RST 2



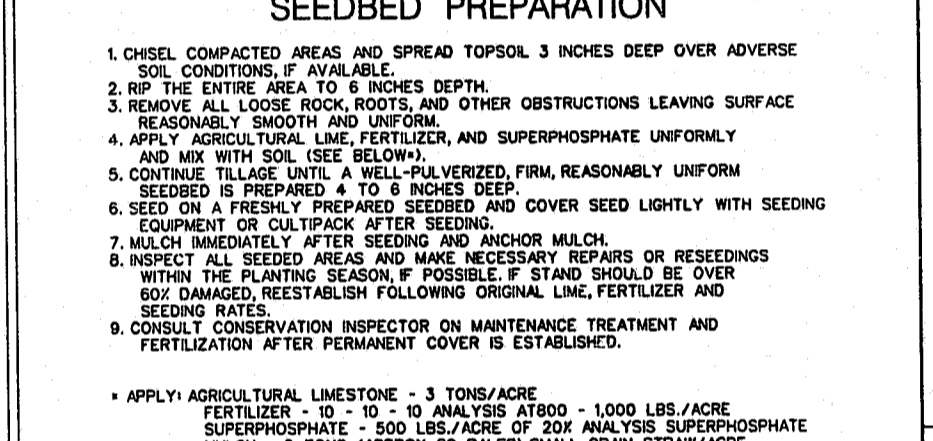
CONTINUOUS SHRUB BED NOT TO SCALE



TYPICAL CURB AND GUTTER SECTION 24" RST 2A



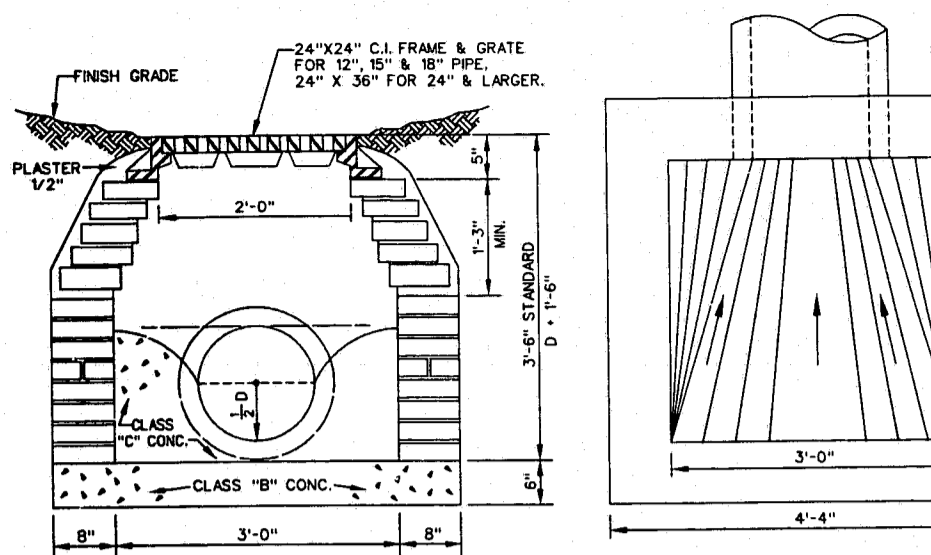
SEEDBED PREPARATION



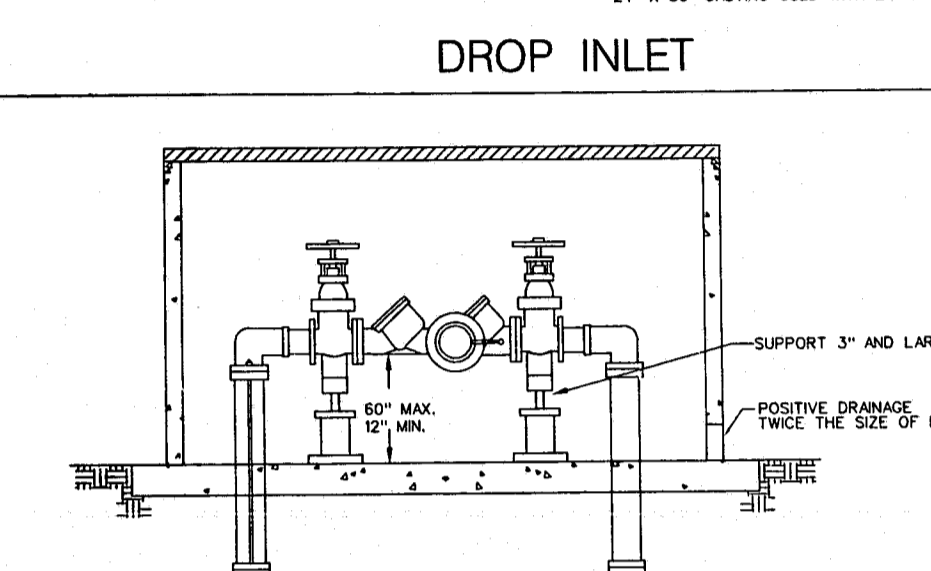
SEEDING SCHEDULE

DATE	TYPE	PLANTING RATE
AUG. 15 - NOV. 1	TALL FESCUE	300 LBS./ACRE
NOV. 1 - MAR. 1	TALL FESCUE & ABRUZZI RYE	300 LBS./ACRE
MAR. 1 - APR. 15	TALL FESCUE	300 LBS./ACRE
APR. 15 - JUN. 30	HULLED COMMON BERMOUDAGRASS	25 LBS./ACRE
JUL. 1 - AUG. 15	TALL FESCUE AND ***BROWNTOP MILLET ***OR SORGHUM - SUDAN HYBRIDS	125 LBS./ACRE 35 LBS./ACRE 30 LBS./ACRE
MAR. 1 - JUN. 1	SERICEA LESPEDEZA (SCARIFIED) AND	50 LBS./ACRE
MAR. 1 - APR. 15	ADD TALL FESCUE	120 LBS./ACRE
MAR. 1 - JUN. 30	DR ADD KEEPING LOVEGRASS	10 LBS./ACRE
MAR. 1 - JUN. 30	DR ADD HULLED COMMON BERMOUDAGRASS	25 LBS./ACRE
JUN. 1 - SEP. 1	***TALL FESCUE AND ***BROWNTOP MILLET ***OR SORGHUM - SUDAN HYBRIDS	120 LBS./ACRE 35 LBS./ACRE 30 LBS./ACRE
SEP. 1 - MAR. 1	SERICEA LESPEDEZA (HULLED-UNSCARIFIED) AND TALL FESCUE	170 LBS./ACRE 120 LBS./ACRE
NOV. 1 - MAR. 1	ADD ABRUZZI RYE	25 LBS./ACRE

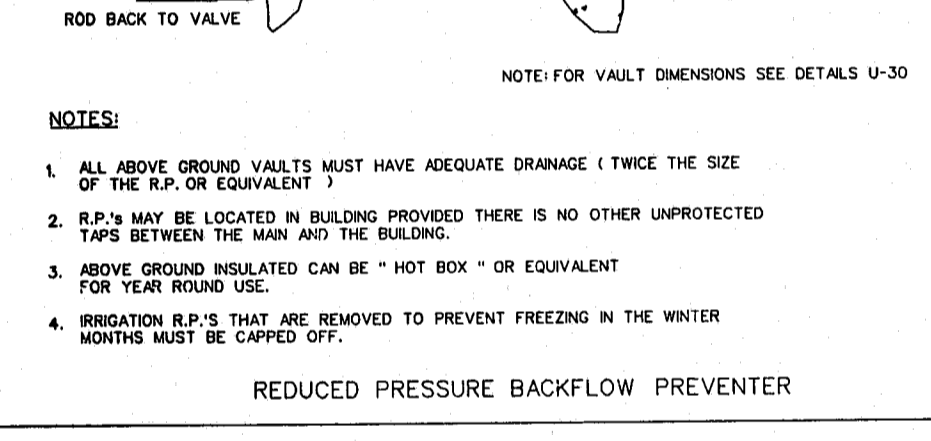
CONSULT CONSERVATION ENGINEER OR SOIL CONSERVATION SERVICE FOR ADDITIONAL INFORMATION CONCERNING OTHER ALTERNATIVES FOR VEGETATION OF DENUDED AREAS. THE ABOVE VEGETATION RATES ARE THOSE WHICH DO WELL UNDER LOCAL CONDITIONS OTHER SEEDING RATE COMBINATIONS ARE POSSIBLE.



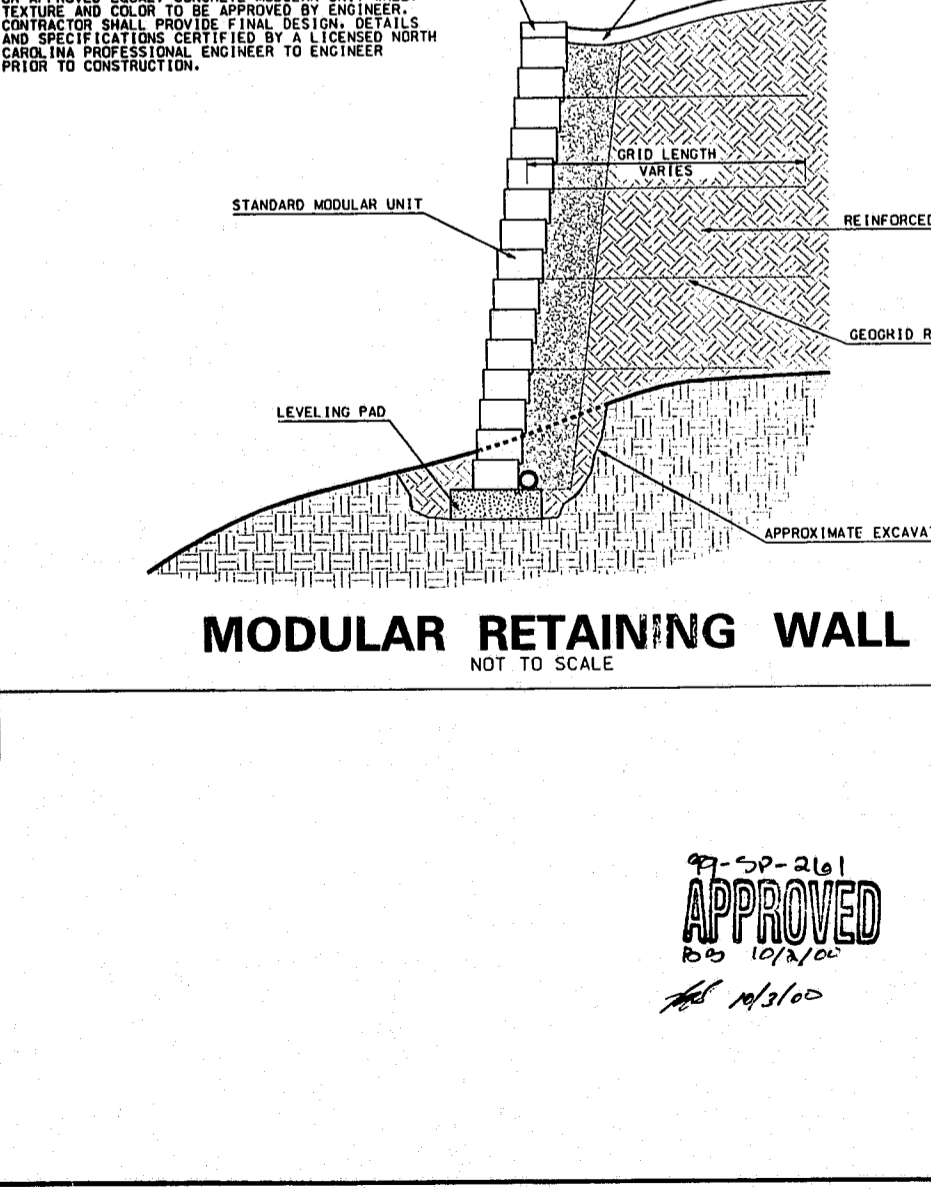
DROP INLET



REDUCED PRESSURE BACKFLOW PREVENTER U32



MODULAR RETAINING WALL NOT TO SCALE



TYPICAL TREE PLANTING NOT TO SCALE