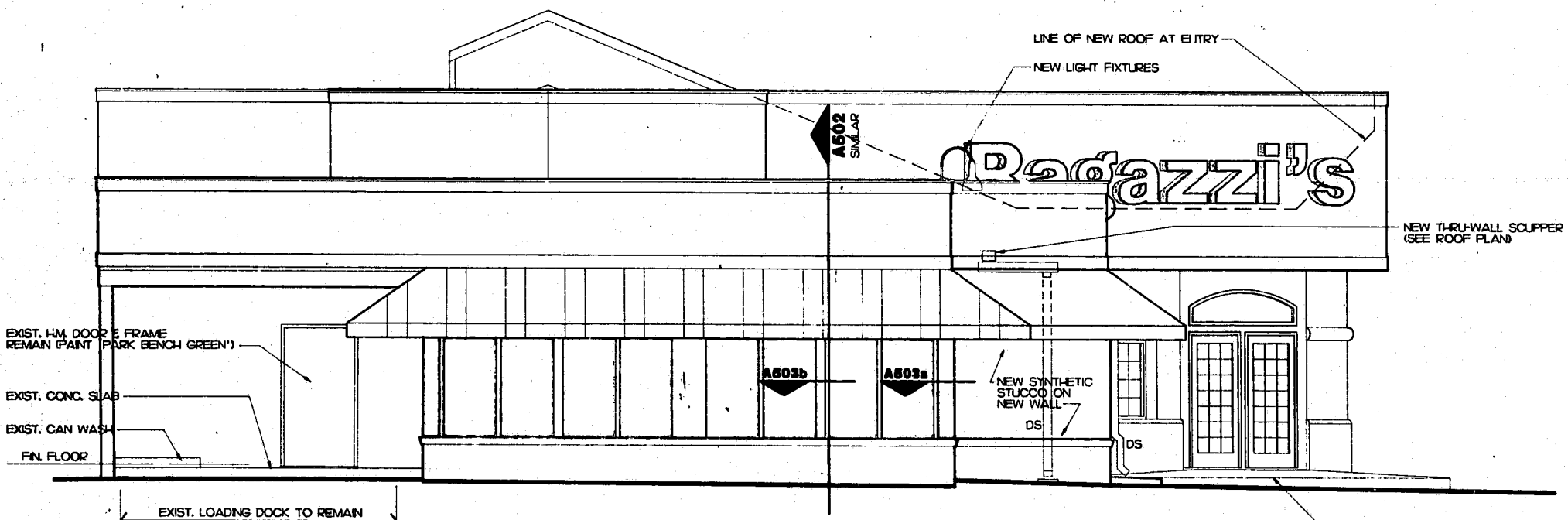


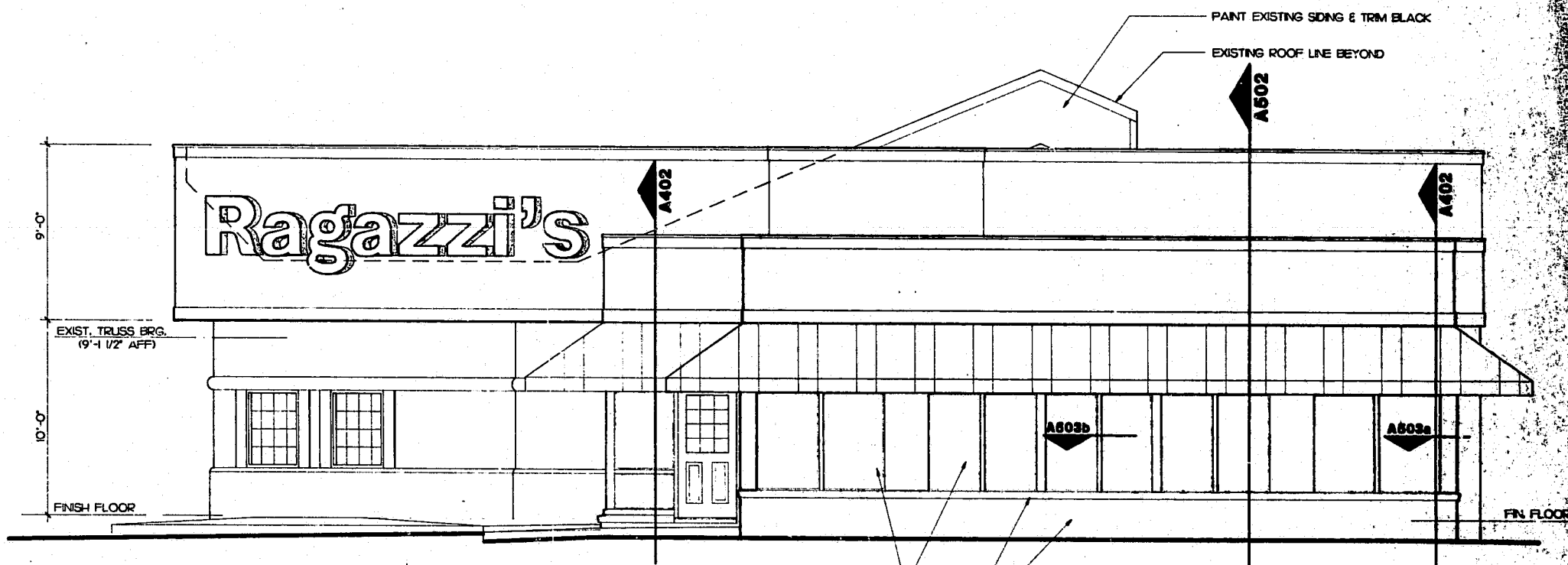
NOTE - SEE ELEVATION A301 FOR TYPICAL NOTES AND DIMENSIONS

elevation 04
SCALE: 1/4" = 1'-0"



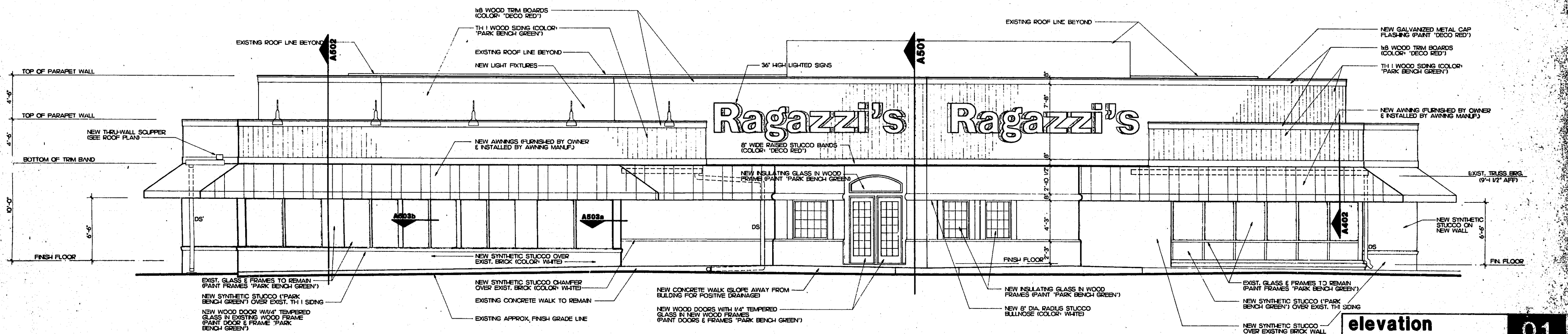
NOTE - SEE ELEVATION A301 FOR TYPICAL NOTES AND DIMENSIONS

elevation 03
SCALE: 1/4" = 1'-0"



NOTE - SEE ELEVATION A301 FOR TYPICAL NOTES AND DIMENSIONS

elevation 02
SCALE: 1/4" = 1'-0"



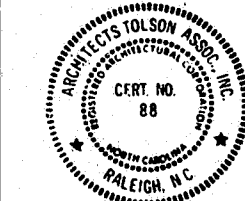
elevation 01
SCALE: 1/4" = 1'-0"

THE INFORMATION PERTAINING TO THE EXISTING FACILITY WAS PROVIDED TO THE ARCHITECT BY THE OWNER AND IS THE RESPONSIBILITY OF THE OWNER TO ASSURE THEIR ACCURACY. IT IS THE RESPONSIBILITY OF THE GENERAL CONTRACTOR TO VERIFY THAT EXISTING SITE CONDITIONS ARE AS DEPICTED IN THESE DOCUMENTS PRIOR TO THE START OF CONSTRUCTION.

REVISIONS



ARCHITECTS
TOLSON
ASSOCIATES
INC.
Suite 200
6736 Falls of the Neuse Road
Raleigh, North Carolina 27605
919-846-1800



Issued for review
3 MARCH 1993

Issued for construction
MAR 17 1993

Ragazzi's
ITALIAN RESTAURANT
Location: CARY, N.C.
File No.: RZNC-02

REMODEL
LH/WS
SHEET NO.
A3
OF 7 SHEETS