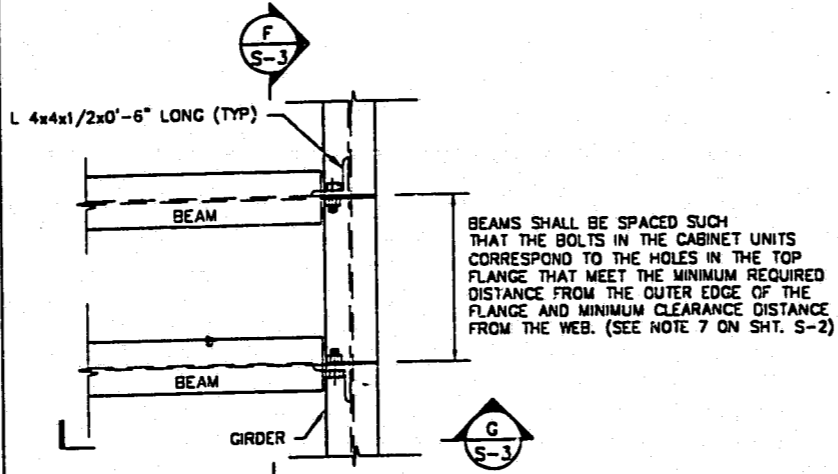


SEE SPRINT
PCS PLANS
(DESIGN BY OTHERS)

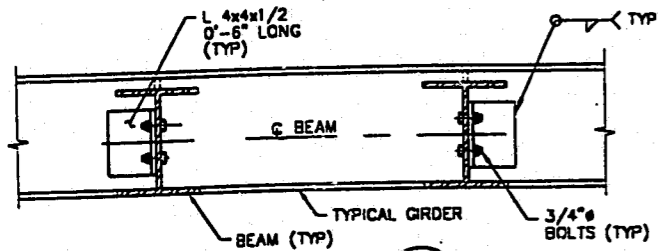
TYPICAL GIRDER-STUB COLUMN
CONNECTION DETAIL (C)



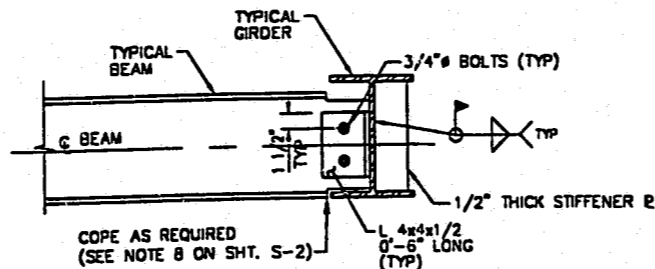
TYPICAL BEAM-GIRDER
CONNECTION DETAIL (PLAN VIEW)
(D S-1) (D S-2)

NOT USED

SECTION (E)



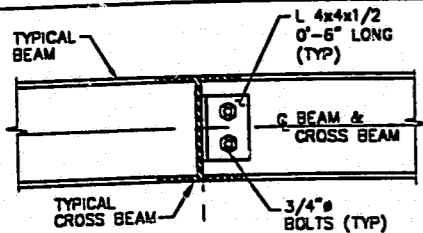
SECTION (F S-3)



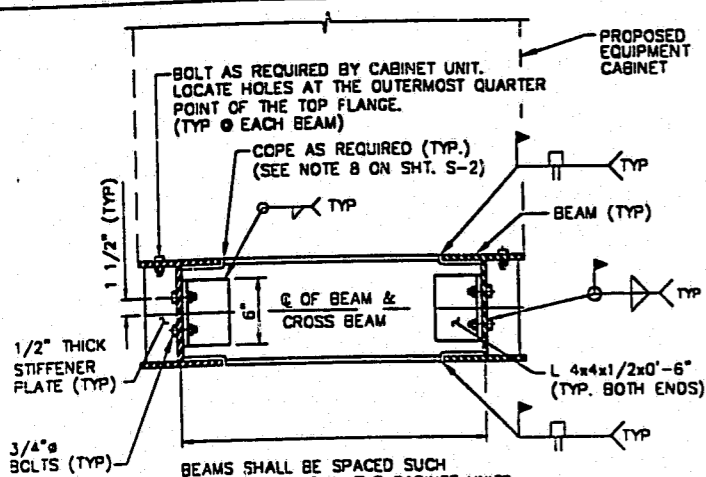
SECTION (G S-3)

SEE SPRINT PCS PLANS FOR
GIRDER - STUB COLUMN CONNECTION
DETAILS (DESIGN BY OTHERS)

SECTION (H)



SECTION (J S-1)



SECTION (K S-1)

NOT USED

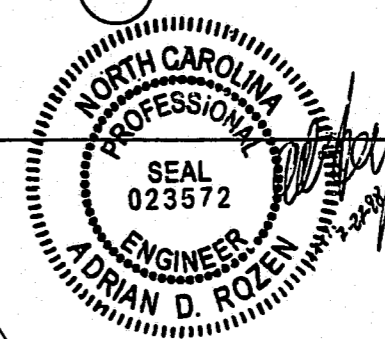
SECTION (L)

98-SD-144-R
APPROVED
RJ 9-4-98
TM 9-4-98

NOT USED

SECTION (M)

FOR CONSTRUCTION



**Kimley-Horn
and Associates, Inc.**
P.O. Box 33068
Raleigh, North Carolina 27638-0368
(919) 677-2000

DATE: 7-22-98
SCALE: NO SCALE
DESIGNED: ADP
DRAWN: TB/SEM
CHECKED: HSP
REVISIONS:
Δ 7-22-98

POWER COMPANY
Carolina Power & Light Company
P.O. Box 1771
Arling, North Carolina 27602-1771
AT&T: Carol. Service Center (919) 589-9111
BUILDING DEPARTMENT
Town of Cary Department of Public Works
P.O. Box 8005
Cary, North Carolina 27512
AT&T: Inspections Dept. (919) 690-3500
TELEPHONE COMPANY
Balaiah
3715 Glenwood Ave. Suite 404
Raleigh, North Carolina 27612
AT&T: Business Department (919) 760-2600

PROPERTY OWNER
Regency Park Corporation
3500 Regency Parkway, Suite C
Cary, North Carolina 27511
AT&T: Sunny Valley (919) 487-8000
DEVELOPER
AT&T Wireless Services
301 Ashville Avenue, Suite 121
Cary, North Carolina 27511
(919) 755-1441
SITE ADDRESS
Regency Park
2000 Regency Park
Cary, North Carolina

**AT&T
Wireless Services
Cary, North Carolina**

STRUCTURAL DETAILS
AT&T WIRELESS SERVICES
R-094 REGENCY PARK
CARY, NORTH CAROLINA

DOCUMENT NO. 01505.46

S - 3