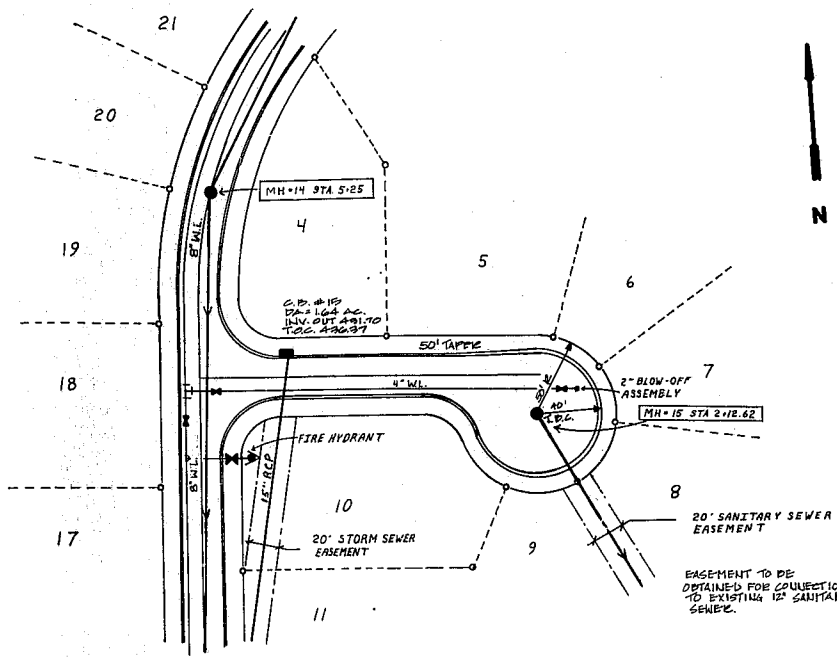


DATE	BY	REV.	DESCRIPTION
MUNICIPAL ENGINEERING SERVICES CO., P.A. CONSULTING ENGINEERS GARNER, N.C.			
PROJECT: RIDGE PATH SUBDIVISION, ZARY, N.C.			
OWNER: SALEMS CT. PARSONS LN. W/ SANITARY SEWER, STORM DRAINAGE & WATER LINES			
SCALE(S) SHOWN	DRAWN BY: D.G.S.	PROJ. NO.: 84-114	DRAWING NO.: 6 of 8
DATE: JULY 11, 1985	CHKD. BY:		

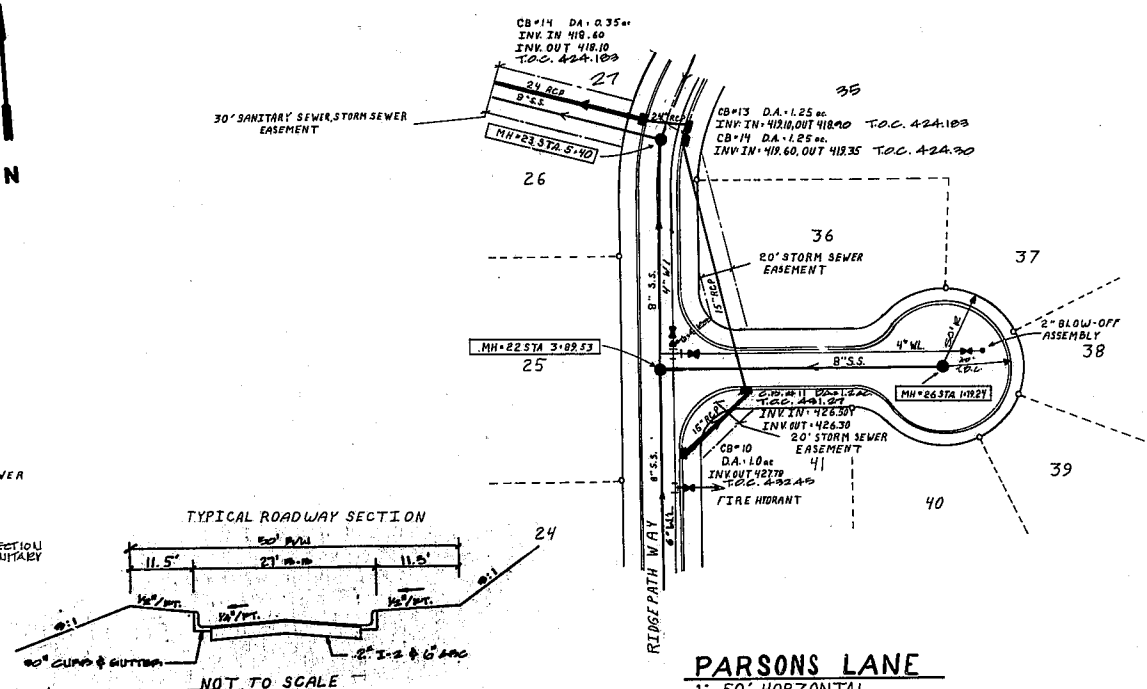


DATE	
BY	
REVISIONS	
NO.	
DESCRIPTION	
DATE	
BY	
NO.	
DESCRIPTION	
DATE	
BY	
NO.	
DESCRIPTION	

DATE	
BY	
REVISIONS	
NO.	
DESCRIPTION	
DATE	
BY	
NO.	
DESCRIPTION	
DATE	
BY	
NO.	
DESCRIPTION	



SALEMS COURT
1" = 50' HORIZONTAL
1" = 5' VERTICAL
0' - RIGHT 25' 0' - LEFT 25'



PARSONS LANE
1" = 50' HORIZONTAL
1" = 5' VERTICAL
0' - RIGHT 25' 0' - LEFT 25'

