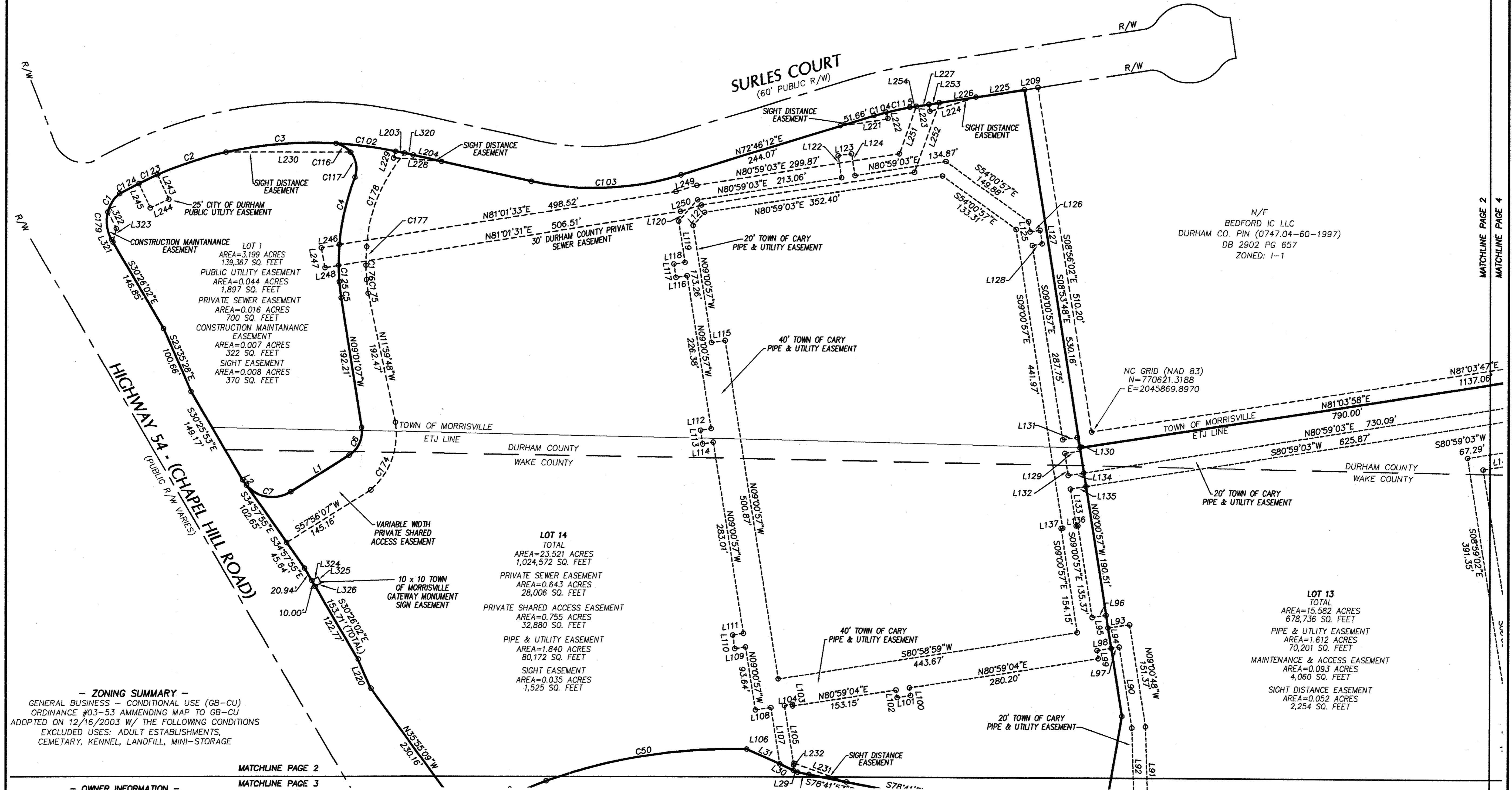
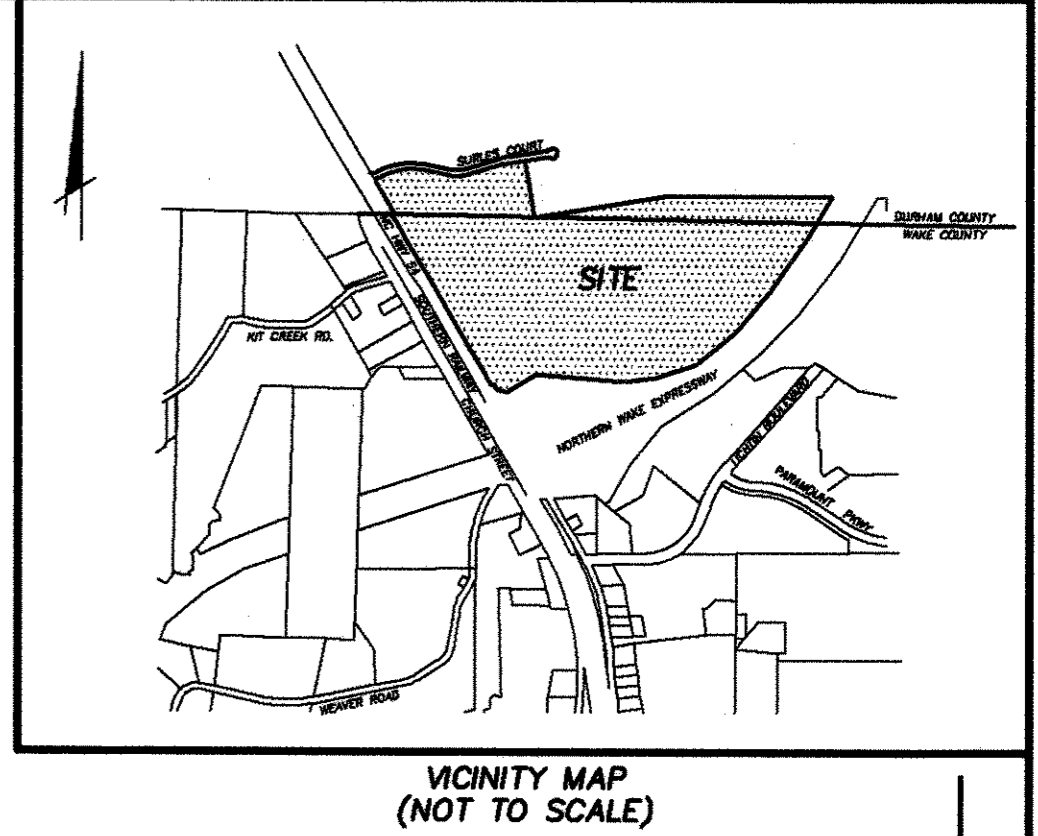
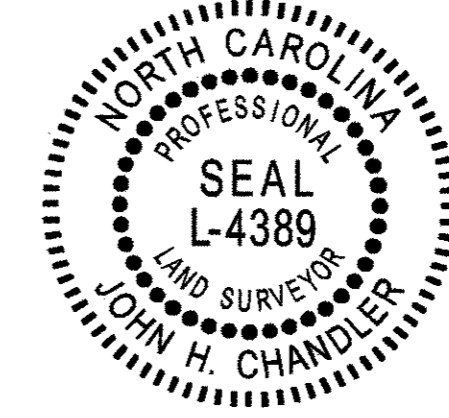


PLAT NORTH  
NC GRID  
ROAD 83

I, JOHN H. CHANDLER, PLS L-4389, CERTIFY THAT THIS PLAT WAS DRAWN UNDER MY SUPERVISION FROM AN ACTUAL SURVEY MADE UNDER MY SUPERVISION FROM INFORMATION SHOWN IN DEED BOOKS REFERENCED ON MAP AND MAP BOOKS REFERENCED ON MAP; THAT ANY LINES NOT ACTUALLY SURVEYED APPEAR AS BROKEN LINES AND WERE PLOTTED FROM INFORMATION AS NOTED ON THE PLAT; THAT THE RATIO OF PRECISION AS CALCULATED IS BETTER THAN 1:10,000; THAT THE AREA IS COMPUTED BY COORDINATE METHOD; THAT THIS PLAT WAS PREPARED IN ACCORDANCE WITH G.S. 47-30 AS AMENDED. WITNESS MY ORIGINAL SIGNATURE, REGISTRATION NUMBER, AND SEAL THIS THE \_\_\_\_\_ DAY OF \_\_\_\_\_ A.D., 2007.

JOHN H. CHANDLER L-4389  
PROFESSIONAL LAND SURVEYOR

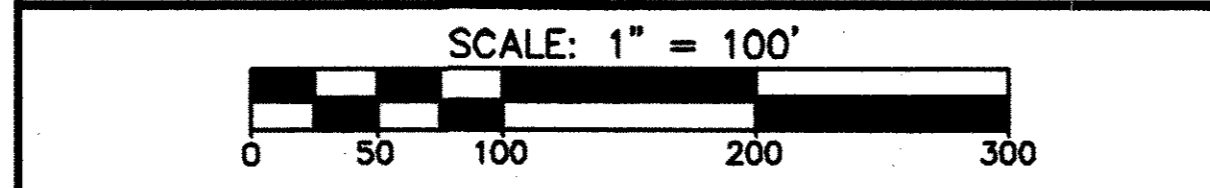


**- ZONING SUMMARY -**  
GENERAL BUSINESS - CONDITIONAL USE (GB-CU)  
ORDINANCE #03-53 AMENDING MAP TO GB-CU  
ADOPTED ON 12/16/2003 W/ THE FOLLOWING CONDITIONS  
EXCLUDED USES: ADULT ESTABLISHMENTS,  
CEMETARY, KENNEL, LANDFILL, MINI-STORAGE

**- OWNER INFORMATION -**  
LOTS 1-12, 15 & 16  
SHILOH MORRISVILLE, LLC  
8001 LINCOLN DRIVE WEST, SUITE D  
MARLTON, NJ 08053

**- OWNER INFORMATION -**  
LOTS 13 & 14  
WAL-MART STORES EAST, LP  
SAM WALTON DEVELOPMENT COMPLEX  
2001 SE 10TH STREET  
BENTONVILLE, AR 72716-4050

DATE	REVISION	INITIAL



**The chandler GROUP**

7621 Purfoy Road, Suite 201  
Fuquay-Varina, NC 27526  
P: 919.552.4845  
F: 919.552.6962

3206 Heritage Trade Dr, Ste 108B  
Wake Forest, NC 27587  
P: 910.278.9415  
F: 910.278.9060  
www.tcgpa.com

EASEMENT PLAT  
OF  
**SHILOH CROSSING**  
WAKE COUNTY  
DATE: JANUARY 7, 2007  
CEDAR FORK TOWNSHIP

SCALE: 1" = 100'  
NORTH CAROLINA

PROJECT #: 05-1012  
PROJ. SVYR: JHC  
DRAWN BY: BSP  
COMP. FILE: 05-1012-easement  
SHEET #: 2 OF 5

DWG. #: C-6A

MATCHLINE PAGE 2  
MATCHLINE PAGE 4