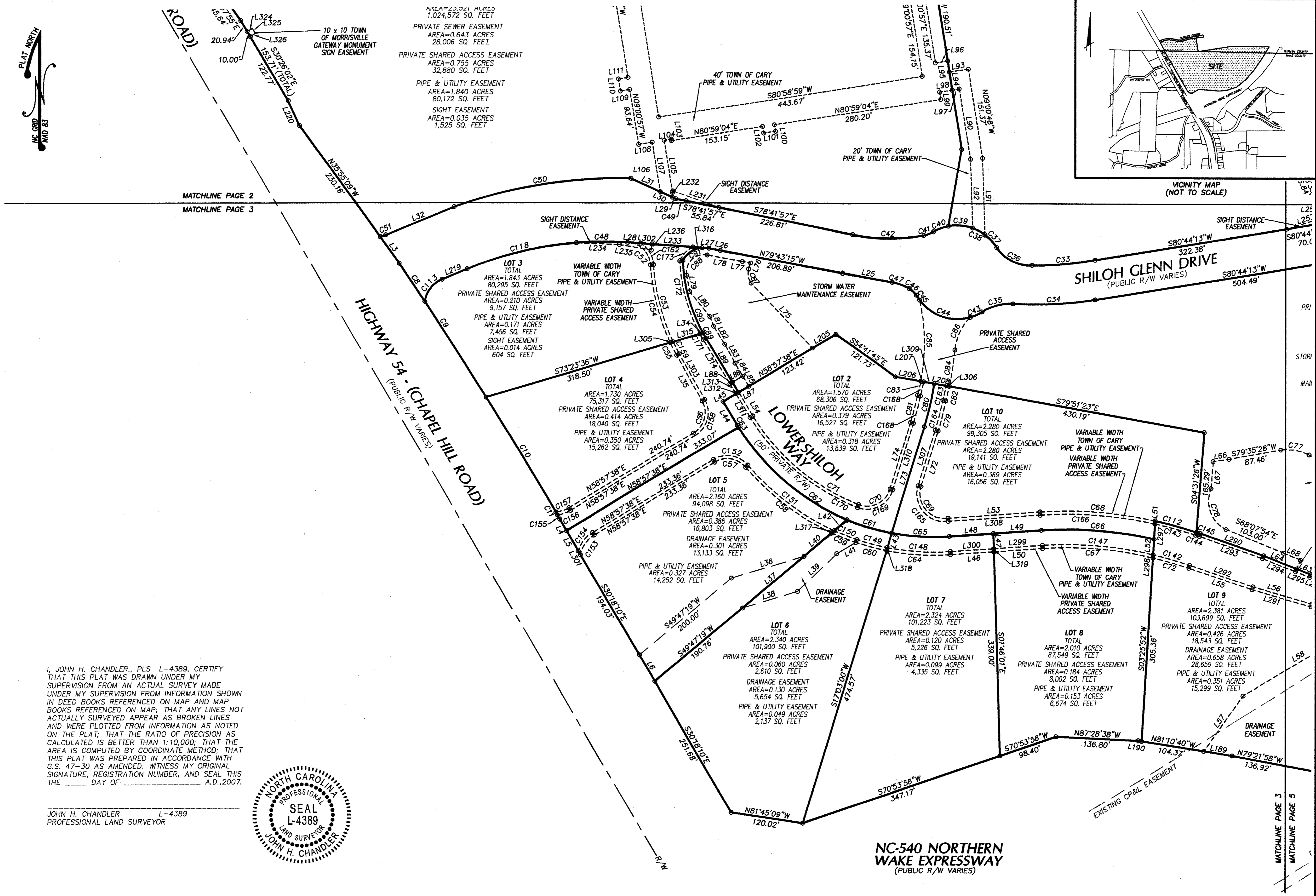


VICINITY MAP (NOT TO SCALE)

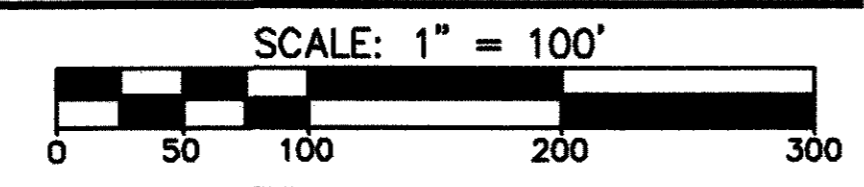


I, JOHN H. CHANDLER, PLS L-4389, CERTIFY THAT THIS PLAT WAS DRAWN UNDER MY SUPERVISION FROM AN ACTUAL SURVEY MADE UNDER MY SUPERVISION FROM INFORMATION SHOWN IN DEED BOOKS REFERENCED ON MAP AND MAP BOOKS REFERENCED ON MAP; THAT ANY LINES NOT ACTUALLY SURVEYED APPEAR AS BROKEN LINES AND WERE PLOTTED FROM INFORMATION AS NOTED ON THE PLAT; THAT THE RATIO OF PRECISION AS CALCULATED IS BETTER THAN 1:10,000; THAT THE AREA IS COMPUTED BY COORDINATE METHOD; THAT THIS PLAT WAS PREPARED IN ACCORDANCE WITH G.S. 47-30 AS AMENDED. WITNESS MY ORIGINAL SIGNATURE, REGISTRATION NUMBER, AND SEAL THIS THE DAY OF

JOHN H. CHANDLER L-4389 PROFESSIONAL LAND SURVEYOR



DATE	REVISION	INITIAL



The chandler GROUP
 7621 Purfoy Road, Suite 201
 Fuquay-Varina, NC 27526
 P: 919.552.4845
 F: 919.552.6962
 3206 Heritage Trade Dr., Ste 108B
 Wake Forest, NC 27587
 P: 910.278.9415
 F: 910.278.9060
 www.tcgpa.com

EASEMENT PLAT
 OF
SHILOH CROSSING
 DATE: JANUARY 7, 2007
 CEDAR FORK TOWNSHIP WAKE COUNTY NORTH CAROLINA
 SCALE: 1" = 100'

PROJECT #: 05-1012
 PROJ. SVYR: JHC
 DRAWN BY: BSP
 COMP. FILE: 05-1012-easement
 SHEET #: 3 OF 5
 DWG. #: C-6B