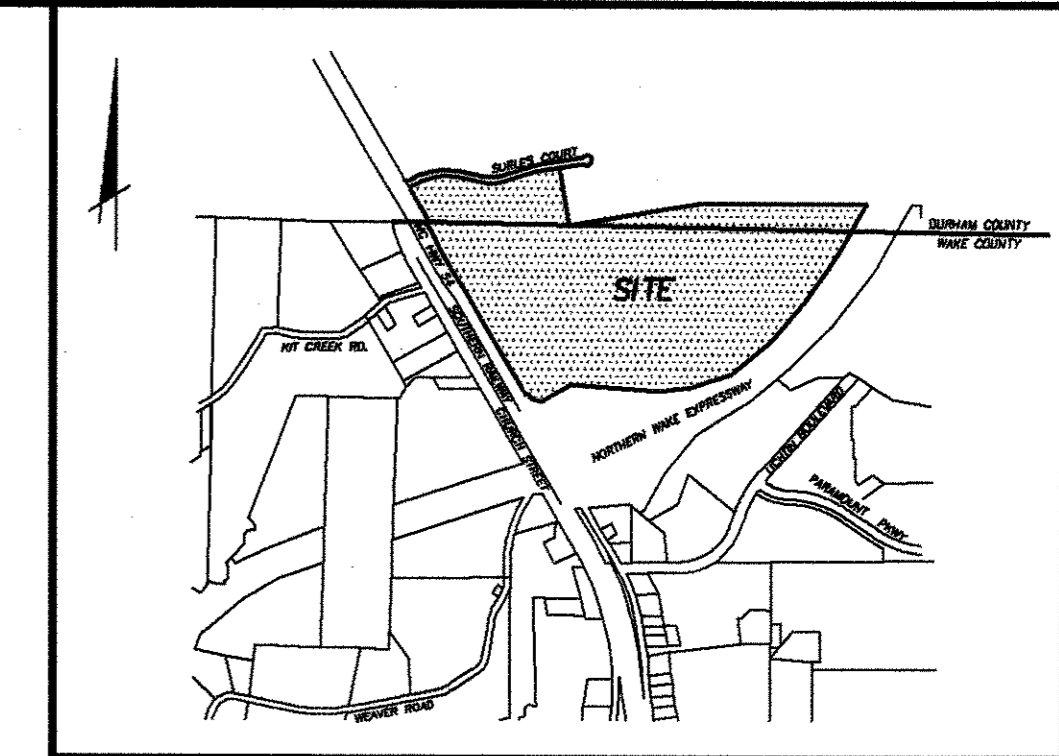
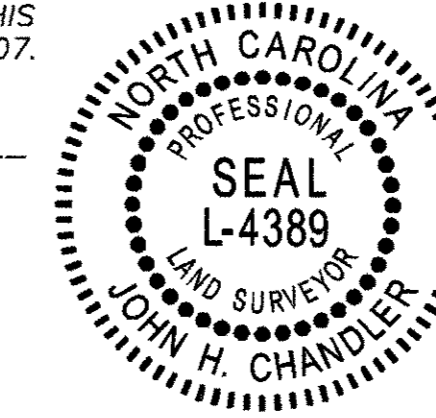


PLAT NORTH
NC GRID
NAD 83

I, JOHN H. CHANDLER, PLS L-4389, CERTIFY THAT THIS PLAT WAS DRAWN UNDER MY SUPERVISION FROM AN ACTUAL SURVEY MADE UNDER MY SUPERVISION FROM INFORMATION SHOWN IN DEED BOOKS REFERENCED ON MAP AND MAP BOOKS REFERENCED ON MAP; THAT ANY LINES NOT ACTUALLY SURVEYED APPEAR AS BROKEN LINES AND WERE PLOTTED FROM INFORMATION AS NOTED ON THE PLAT; THAT THE RATIO OF PRECISION AS CALCULATED IS BETTER THAN 1:10,000; THAT THE AREA IS COMPUTED BY COORDINATE METHOD; THAT THIS PLAT WAS PREPARED IN ACCORDANCE WITH G.S. 47-30 AS AMENDED. WITNESS MY ORIGINAL SIGNATURE, REGISTRATION NUMBER, AND SEAL THIS THE ____ DAY OF _____ A.D., 2007.

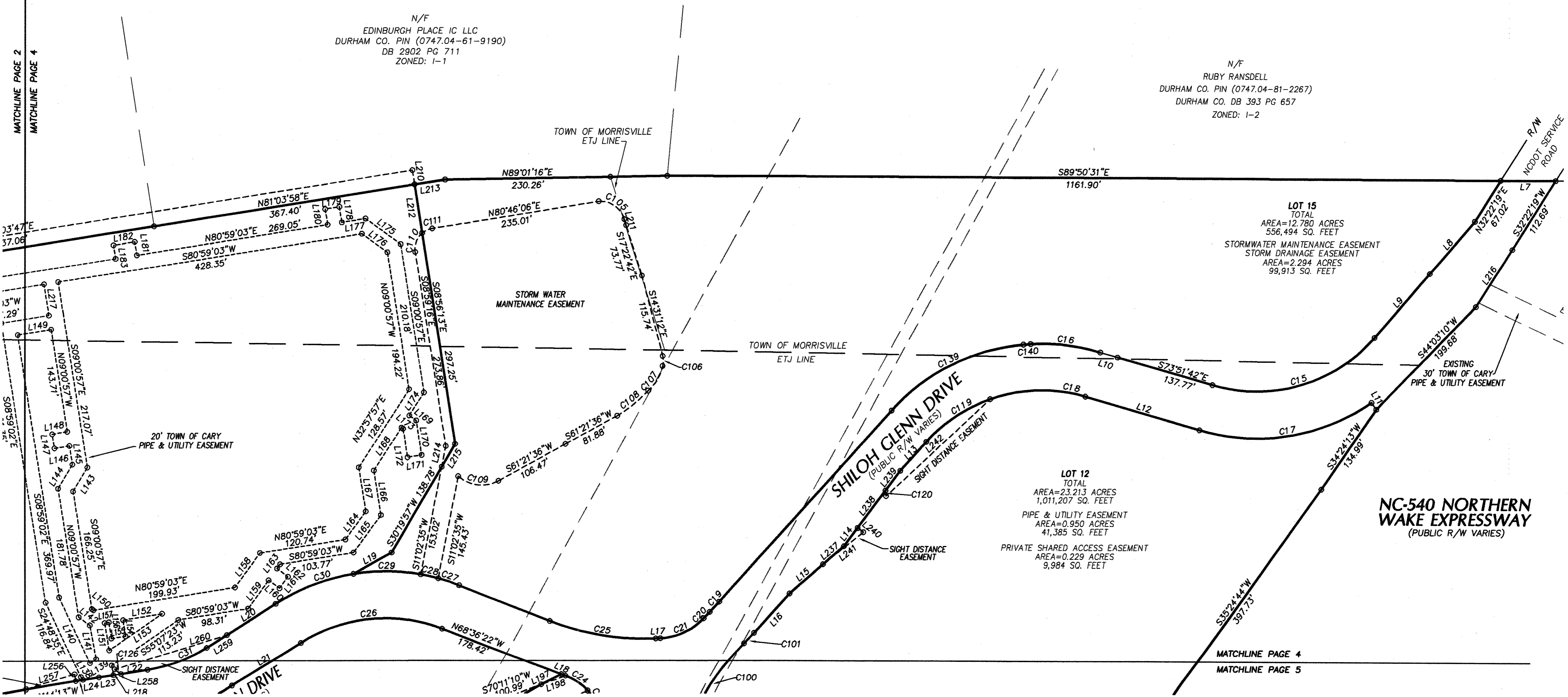
JOHN H. CHANDLER L-4389
PROFESSIONAL LAND SURVEYOR



VICINITY MAP
(NOT TO SCALE)

N/F
EDINBURGH PLACE IC LLC
DURHAM CO. PIN (0747.04-61-9190)
DB 2902 PG 711
ZONED: I-1

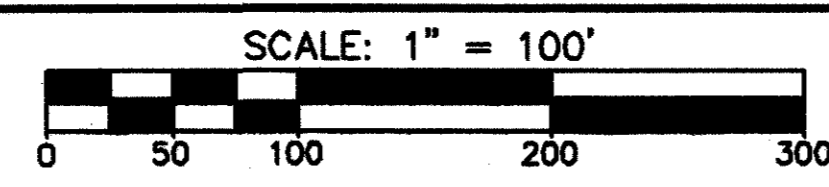
N/F
RUBY RANDELL
DURHAM CO. PIN (0747.04-81-2267)
DURHAM CO. DB 393 PG 657
ZONED: I-2



MATCHLINE PAGE 2
MATCHLINE PAGE 4

MATCHLINE PAGE 4
MATCHLINE PAGE 5

DATE	REVISION	INITIAL



The chandler
GROUP

7621 Purfoy Road, Suite 201
Fuquay-Varina, NC 27526
P: 919.552.4845
F: 919.552.6962

3206 Heritage Trade Dr., Ste 108B
Wake Forest, NC 27587
P: 910.278.9415
F: 910.278.9060
www.tcgpa.com

EASEMENT PLAT
OF
SHILOH CROSSING

DATE: JANUARY 7, 2007
CEDAR FORK TOWNSHIP
WAKE COUNTY
NORTH CAROLINA

PROJECT #: 05-1012
PROJ. SVYR: JHC
DRAWN BY: BSP
COMP. FILE: 05-1012-easement
SHEET #: 4 OF 5

SCALE: 1" = 100'
DWG. #: C-6C