

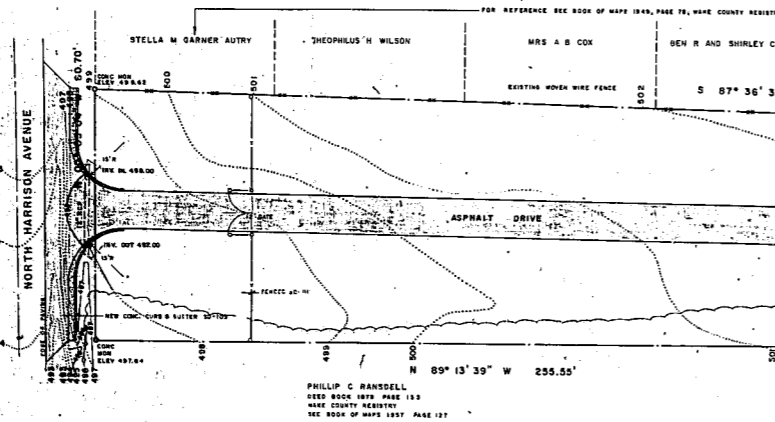
CARY CENTRAL - NUMBER 1 ESS OFFICE

CARY , NORTH CAROLINA

FOR
SOUTHERN BELL TELEPHONE AND TELEGRAPH COMPANY

NOTES

INFORMATION FOR THIS SITE PLAN TAKEN FROM A SURVEY BY A. EARL SMITH (LS-1072) DATED 9 OCT 1973
 BENCH MARK: SPIKE IN POLE ON WEST SIDE OF NORTH ACADEMY STREET
 ELEV 508.27' - BASED ON MEAN SEA LEVEL (UIC 03)
 DATUM, BENCH MARK F-103)
 THERE IS NO FLOOD PLAIN OR DANGER OF FLOODING IN THIS AREA.



INDEX OF DRAWINGS

ARCHITECTURAL

- A-1 SITE PLAN, LEGENDS
- A-2 LANDSCAPING
- A-3 FLOOR PLAN, SCHEDULES, AND INTERIOR DETAILS
- A-4 ROOF PLAN AND ROOF DETAILS
- A-5 ELEVATIONS
- A-6 WALL SECTIONS, COLUMN DETAILS, AND CAST STONE DETAILS

STRUCTURAL

- S-1 FOUNDATION PLAN
- S-2 ROOF FRAMING PLAN
- S-3 SCHEDULES AND DETAILS

PLUMBING AND MECHANICAL

- PM-1 PARTIAL PLUMBING PLAN, MECHANICAL PLAN, SITEPLAN AND DETAIL
- M-2 LARGE SCALE MECHANICAL AND GENERATOR ROOM PLANS AND DETAILS
- M-3 SCHEDULES AND DETAILS

ELECTRICAL

- E-1 FLOOR PLAN AND SCHEDULES
- E-2 DETAILS AND DIAGRAMS
- E-3 SITE PLAN AND DIAGRAMS

STANDARD DETAILS

(SHOWN AS "SD-100" IN DRAWINGS SEE SPECIFICATIONS FOR STANDARD DETAILS)

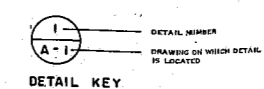
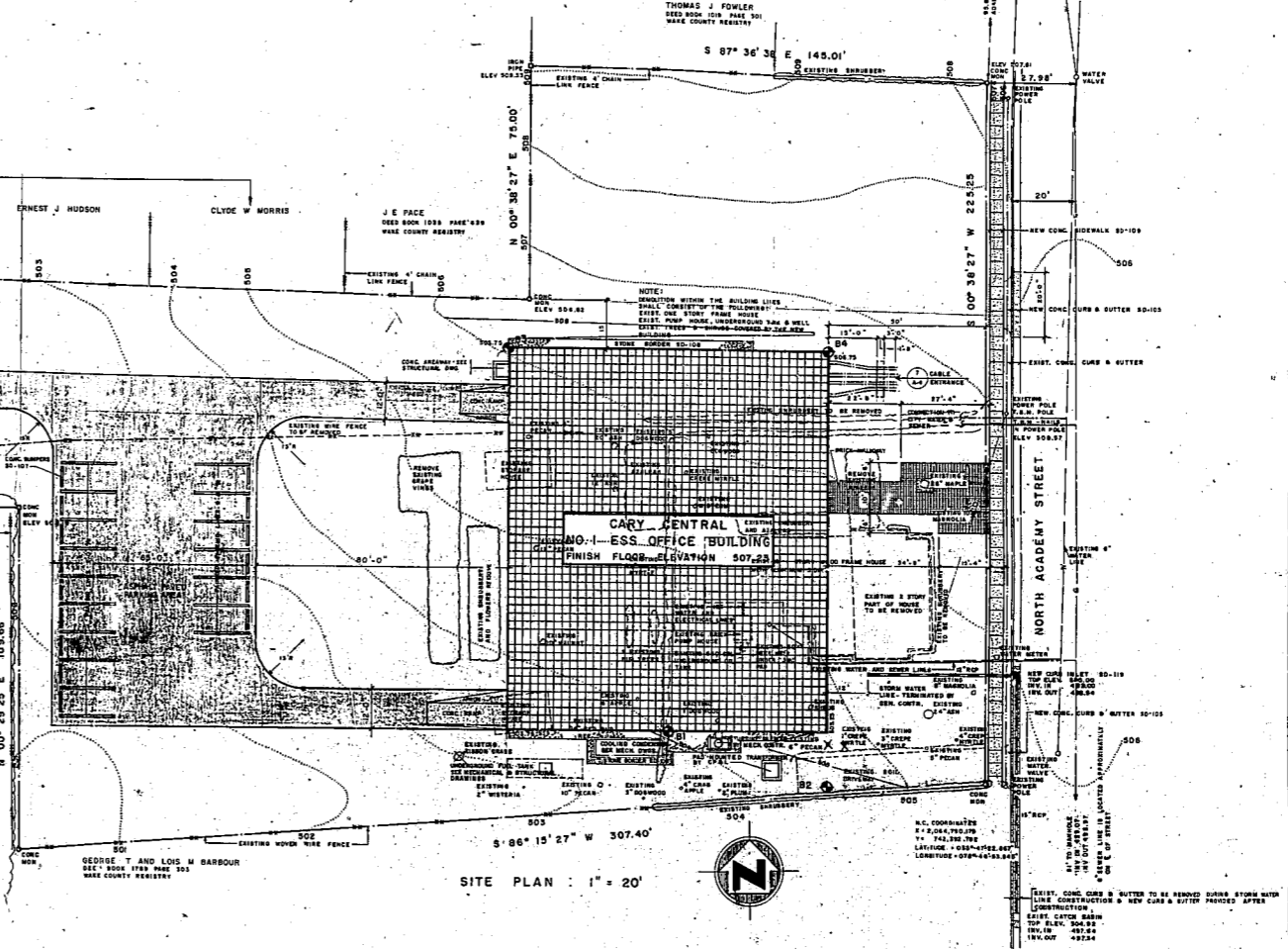
- SD-105 CURB AND GUTTER DETAIL
- SD-106 TYPICAL EDGE OF PAVING SECTION
- SD-107 CONCRETE NUMBER DETAIL
- SD-108 STONE BORDER DETAIL
- SD-109 CONCRETE WALL DETAILS
- SD-110 PROJECT SIGN
- SD-111 FENCE DETAILS
- SD-114 VECAD, HOUSING, AND HANDRAIL DETAILS
- SD-119 CURB INLET DETAIL
- SD-122 BRICK WALKWAY DETAIL
- SD-201 GUTTER EXPANSION JOINT
- SD-202 TYPICAL LOUVER DETAILS
- SD-211 ROOF DRAIN
- SD-212 ROOF STACK VENT
- SD-214 RECOMMENDED EQUIPMENT CURB
- SD-222 FITTED ROCK
- SD-229 GUTTER AND GRAVEL STOP
- SD-301 MASONRY PARTITION DETAILS
- SD-302 DETAILS OF MASONRY BLOCK CONTROL JOINTS
- SD-303 DETAIL OF CONTROL JOINT AT DOORS
- SD-304 TYPICAL DOOR FRAMING DETAILS
- SD-305 TYPICAL DOOR FRAMING DETAILS
- SD-307 MARBLE THRESHOLD DETAIL
- SD-308 DETAIL OF REFERENCE DETAIL
- SD-309 DETAIL OF HULL-IN (ROOF)
- SD-310 DETAIL OF MICRO SWITCH
- SD-311 ISOMETRIC OF ELECTRIC STRIKE
- SD-312 MASONRY BLOCK PARTITION AT NEW CONCRETE COLUMNS
- SD-316 THRESHOLD DETAILS
- SD-319 FUTURE CABLE OPENING
- SD-331 MASONRY BLOCK PARTITION AT CONCRETE COLUMN
- SD-339 CABLE HOLE / CYAIL
- SD-341 WOP RECEIVER DETAIL

MATERIAL LEGEND

EARTH		MARBLE	
PLASTER		CRUSHED STONE	
CONCRETE BLOCK		ADHESIVE TILE	
BRICK		CERAMIC TILE	
CAST STONE		STEEL (LARGE SCALE)	
CONCRETE		ALUMINUM	
ROUGH WOOD		GLASS	
FINISHED WOOD		BITUMINOUS PAVING	
RIGID INSULATION		STEEL (SMALL SCALE)	

SITE LEGEND

- S- EXISTING SANITARY SEWER
- W- EXISTING WATER
- 504- NATURAL CONTOUR
- 504- FINISHED CONTOUR
- 503.75 FINISHED SPOT ELEVATION
- EXISTING TREE TO REMAIN
- ⊗ EXISTING TREE TO BE REMOVED
-
-
-
-
- SD-119 IDENTIFIED STANDARD DETAIL
-



CARY CENTRAL NUMBER 1 ESS OFFICE
 CARY, NORTH CAROLINA
 SOUTHERN BELL TELEPHONE & TELEGRAPH COMPANY
 RALEIGH, NORTH CAROLINA

HOLLOWAY REEVES ARCHITECTS
 RALEIGH, NORTH CAROLINA

REVISIONS

NO.	DATE	BY	DESCRIPTION
1		JWF	
2		JWF	
3		JWF	
4		JWF	
5		JWF	

A-1