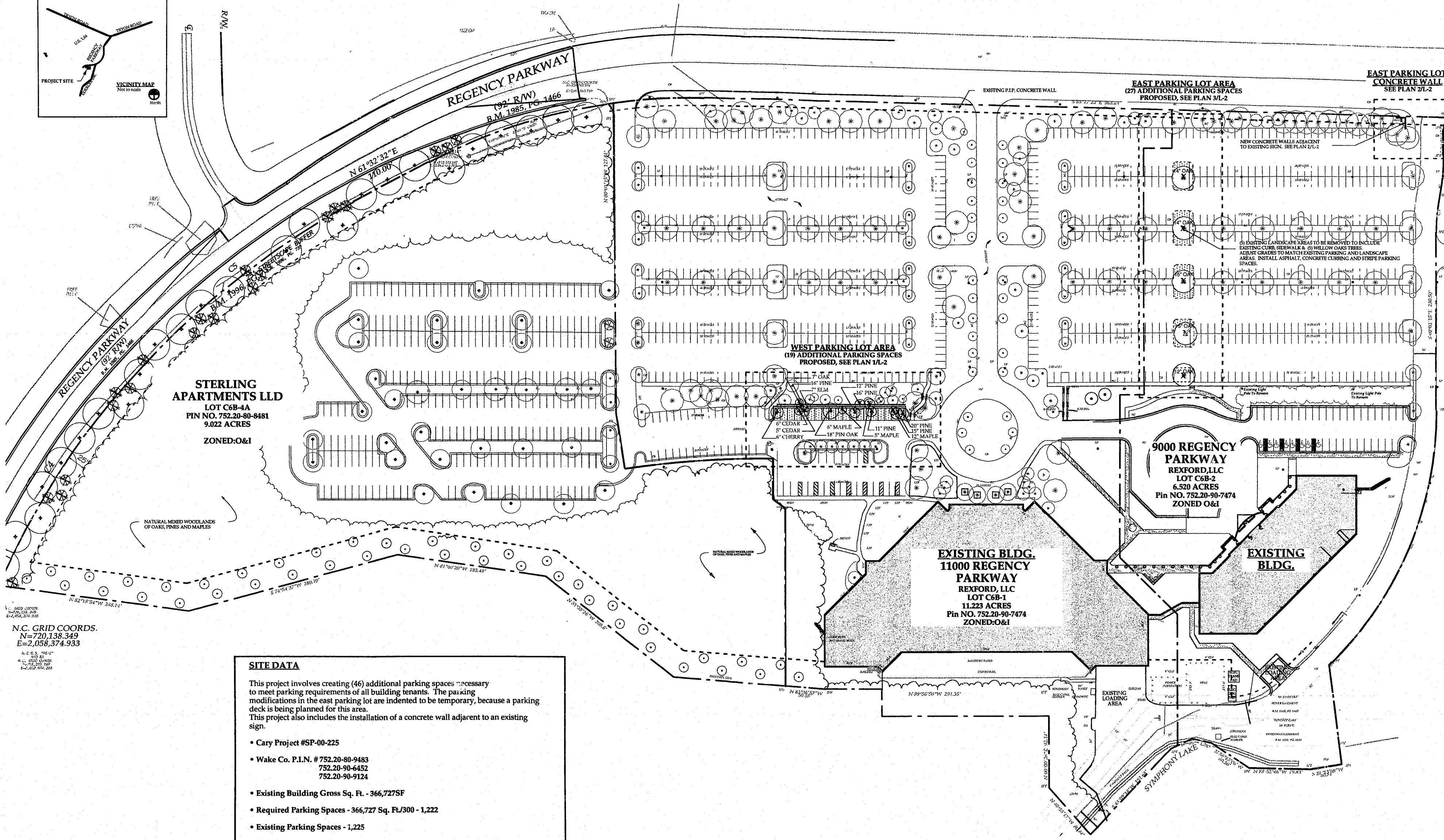
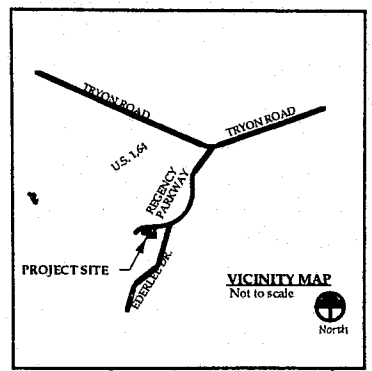
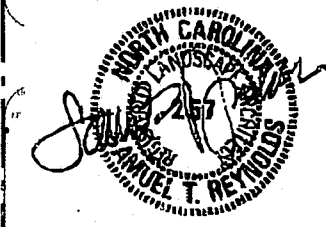


ZONED O & I

Reynolds & Jewell

Landscape Architecture
Land Planning
Suite 201
128 East Hargett Street
Raleigh NC 27601
(919) 821-5074
fax (919) 821-5139



STERLING APARTMENTS LLD
LOT C6B-4A
PIN NO. 752.20-80-8481
9.022 ACRES
ZONED:O&I

WEST PARKING LOT AREA
(19) ADDITIONAL PARKING SPACES
PROPOSED, SEE PLAN 1/L-2

EAST PARKING LOT AREA
(27) ADDITIONAL PARKING SPACES
PROPOSED, SEE PLAN 3/L-2

9000 REGENCY PARKWAY
REXFORD, LLC
LOT C6B-2
6.520 ACRES
Pin NO. 752.20-90-7474
ZONED:O&I

EXISTING BLDG.
11000 REGENCY PARKWAY
REXFORD, LLC
LOT C6B-1
11.223 ACRES
Pin NO. 752.20-90-7474
ZONED:O&I

EXISTING BLDG.

N.C. GRID COORDS.
N=720,138.349
E=2,058,374.933

SITE DATA

This project involves creating (46) additional parking spaces necessary to meet parking requirements of all building tenants. The parking modifications in the east parking lot are intended to be temporary, because a parking deck is being planned for this area. This project also includes the installation of a concrete wall adjacent to an existing sign.

- Cary Project #SP-00-225
- Wake Co. P.I.N. # 752.20-80-9483
752.20-90-6452
752.20-90-9124
- Existing Building Gross Sq. Ft. - 366,727SF
- Required Parking Spaces - 366,727 Sq. Ft./300 - 1,222
- Existing Parking Spaces - 1,225
- Total Proposed Parking Spaces - 1,268
- Total Gross Acres - 26.765
- Existing Impervious Surface - 14.069 Acres
- Additional Impervious Surface This Project - 7,075SF = .162 Acres
- Total Impervious Surface - 14.231 Acres / 26.765 Acres = 53.2%
- Denuded Area This Project - 9,410SF
(Less than 12,000SF, No Grading Permit Required)

- NOTES:**
- 1) Repair / replace any existing utilities which may be damaged during construction per current Town of Cary Requirements.
 - 2) Tree protection fencing shall be provided per Detail 2/L-4.
 - 3) See sheet L-2 for layout and grading plan enlargements.
 - 4) All construction shall be in accordance with current Town of Cary Standard Specifications and Details.

Revisions:
1/2/01 - 2nd Submittal

Project:
Regency Park - Additional Parking
Cary, North Carolina

Client:
Grubb Management, Inc.

Date:
November 20, 2000

Scale:
1"=60'-0"

Drawing Title:
OVERALL SITE PLAN

Sheet No.:

L-1

