

CHANNEL CHANGE DETAIL
(1/2" = 1' SCALE)

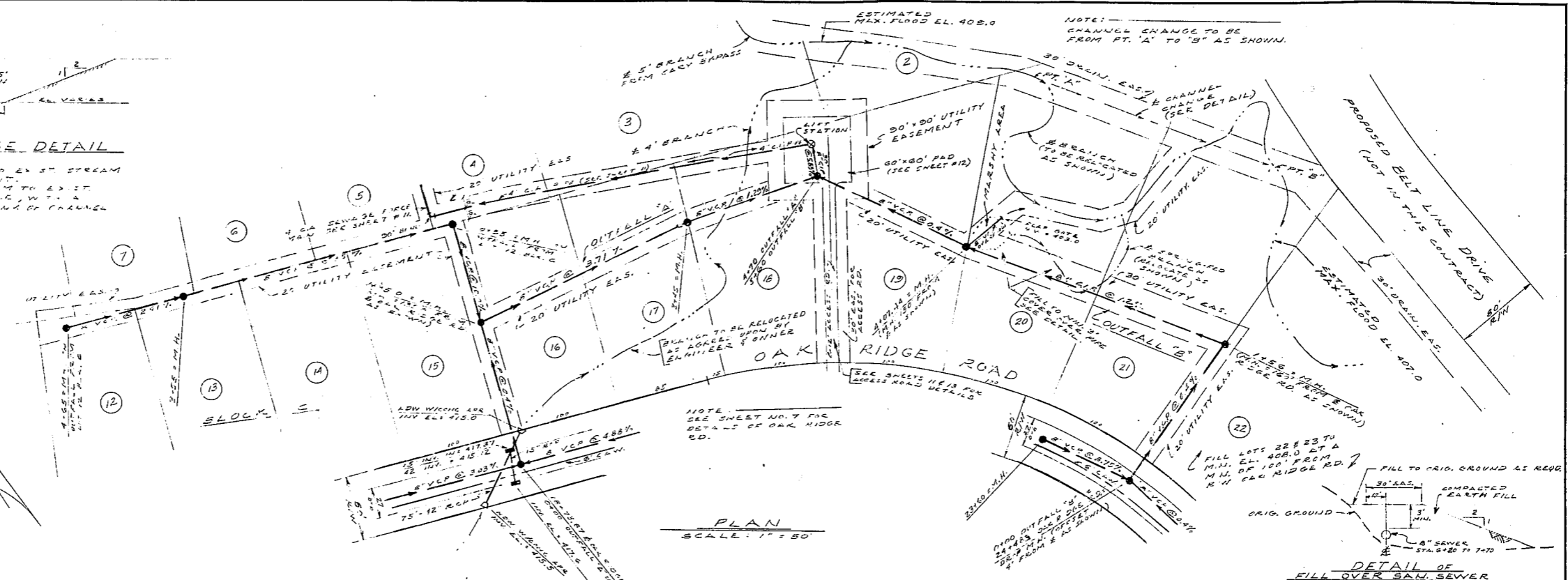
1. INV. EL. TO CORRECT TO EX. ST. STREAM INV. @ 0.8% GRADIENT.
2. TOP OF BANK TO CORRECT TO EX. ST. GROUND W/ 25' MIN. HGT. W/ 4" MIN. HEIGHT 25' ABOVE INV. OF CHANNEL.



NOTE: CHANNEL CHANGE TO BE FROM PT. 'A' TO 'B' AS SHOWN.

DATE	
BY	
DESIGNED	
CHECKED	
APPROVED	
NO.	

DATE	
BY	
DESIGNED	
CHECKED	
APPROVED	
NO.	



PLAN SCALE: 1" = 50'

DETAIL OF FILL OVER SAN. SEWER (NOT TO SCALE)

