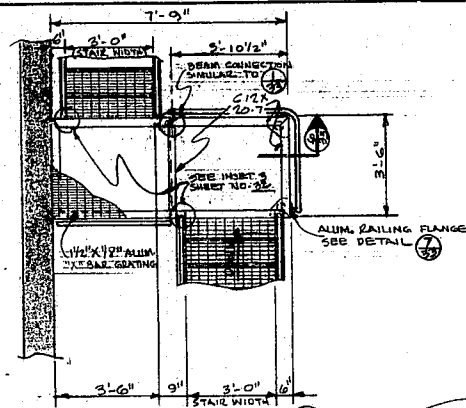
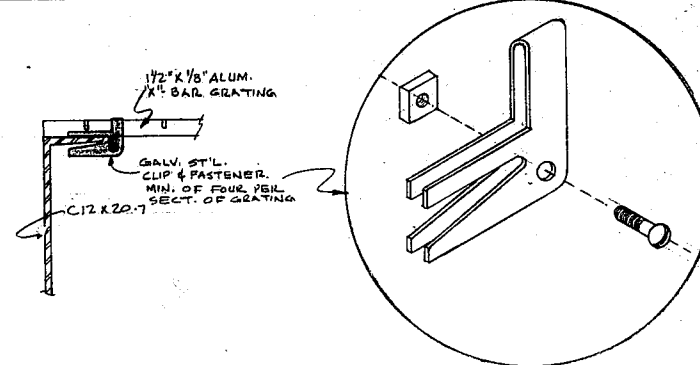


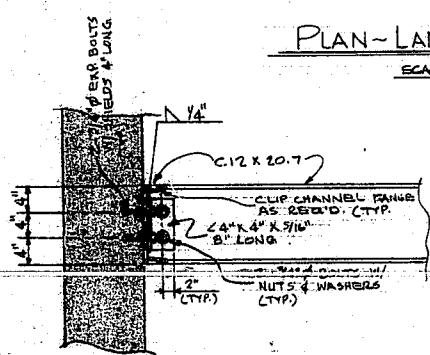
PLAN-LANDING & WALKWAY (A)
SCALE: 3/8" = 1'-0"



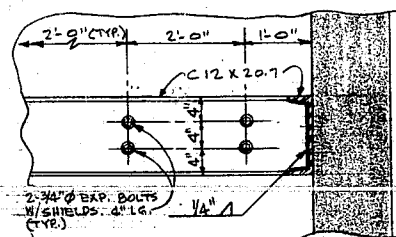
PLAN-STAIR LANDING (B)
SCALE: 3/8" = 1'-0"



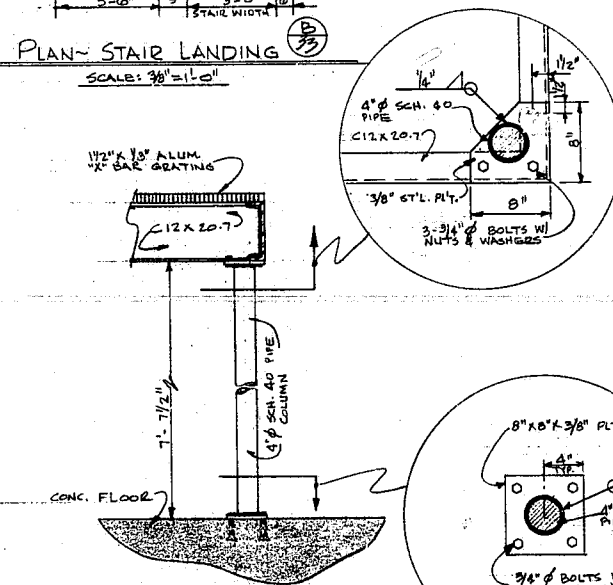
TYPICAL GRATING FASTENER DETAIL
NO SCALE



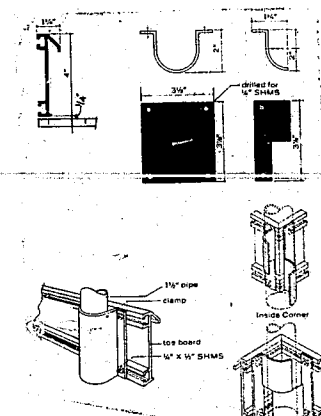
CONNECTION DETAIL (1)
SCALE: 1" = 1'-0"



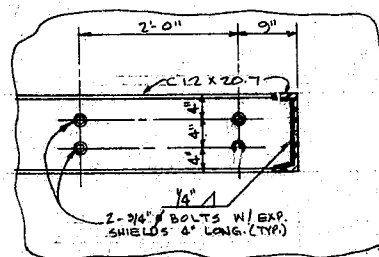
CONNECTION DETAIL (2)
SCALE: 1" = 1'-0"



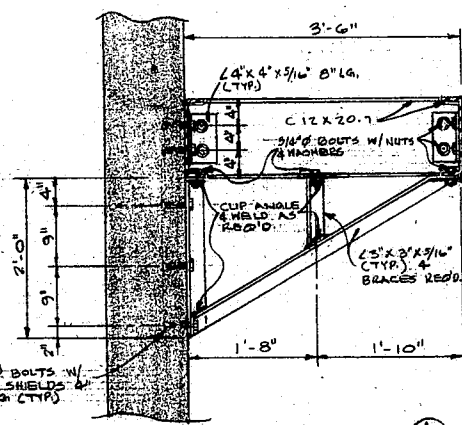
DETAIL (3)
SCALE: 3/4" = 1'-0"



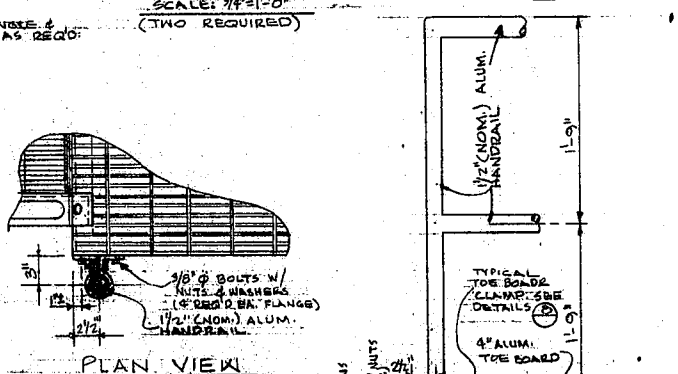
TYP. ALUM. TOE BOARD CONNECTIONS
NO SCALE



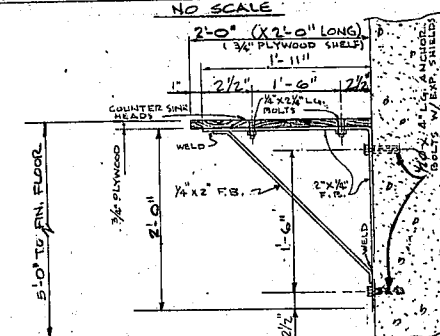
CONNECTION DETAIL (4)
SCALE: 1" = 1'-0"



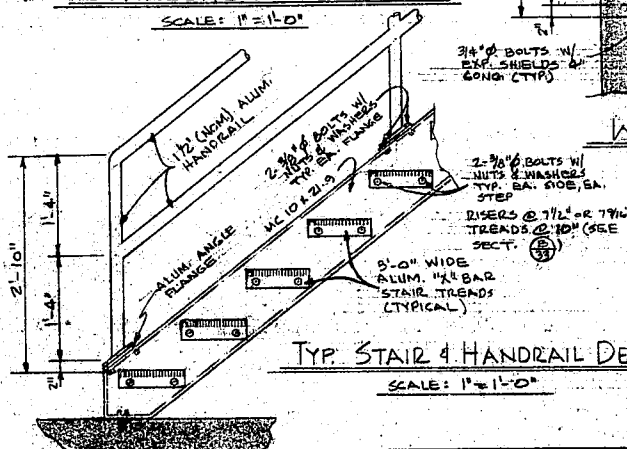
WALL BRACKET DETAIL (4)
SCALE: 1" = 1'-0"



PLAN VIEW

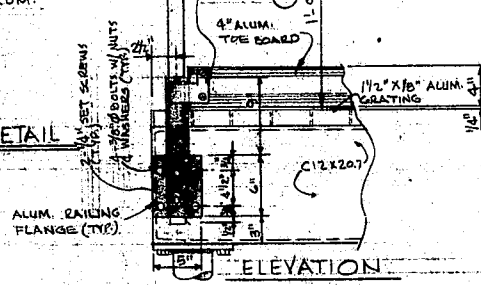


SHelf AND BRACKET DETAIL (2 BRACKETS REQ'D)
NO SCALE



TYP. STAIR & HANDRAIL DETAIL (E)
SCALE: 1" = 1'-0"

ALUM. RAILING FLANGE DETAIL (7)
SCALE: 1/2" = 1'-0"



ELEVATION

DETAILS			
WASTEWATER IMPROVEMENTS			
TOWN OF CARY			
WAKE COUNTY, NORTH CAROLINA			
MOORE, GARDNER & ASSOCIATES, INC.			
CONSULTING ENGINEERS			
ASHEBORO • GREENSBORO • CARY			
NORTH CAROLINA			
SCALE: NOTED		JOB NO. 2-07175	
		DRAWER NO. 10	
SHEET 23 OF 42			