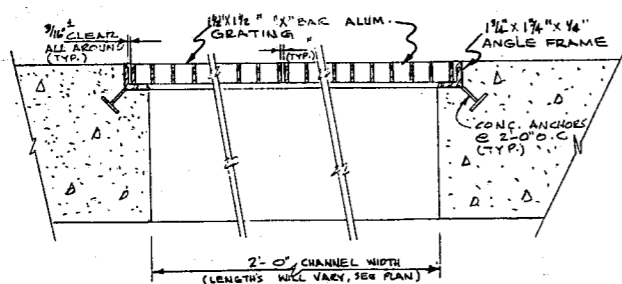
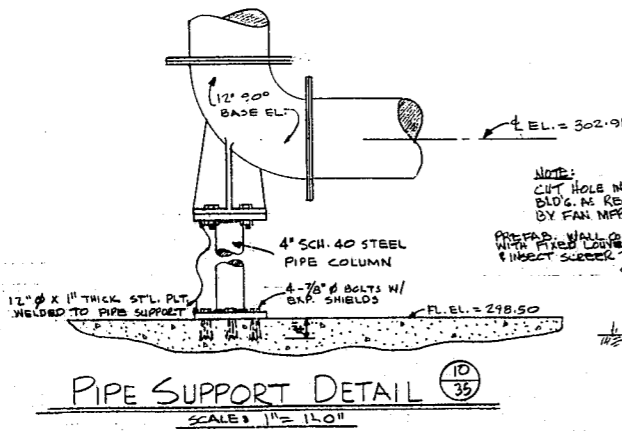


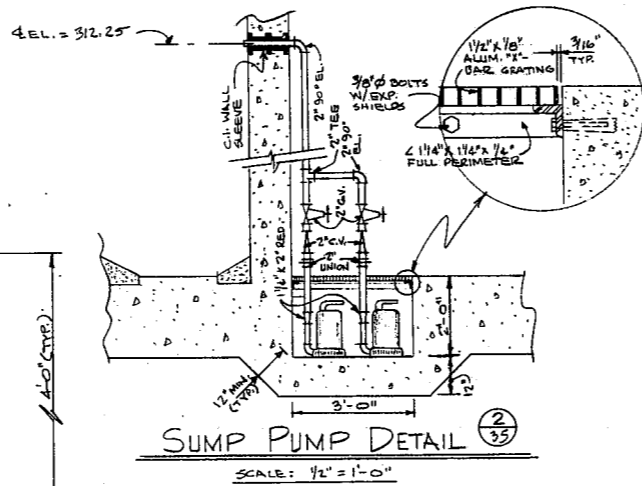
ALUMINUM STOP PLATE DETAILS (1) / 35  
NO SCALE



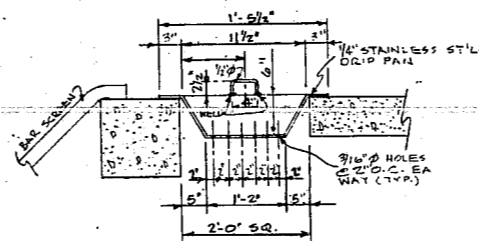
ALUM. GRATING DETAILS (7) / 35  
NO SCALE



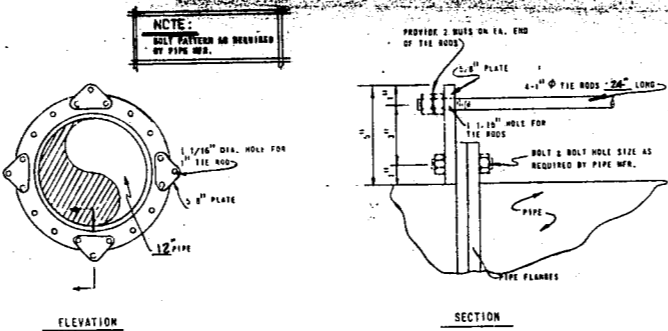
PIPE SUPPORT DETAIL (10) / 35  
SCALE: 1\"/>



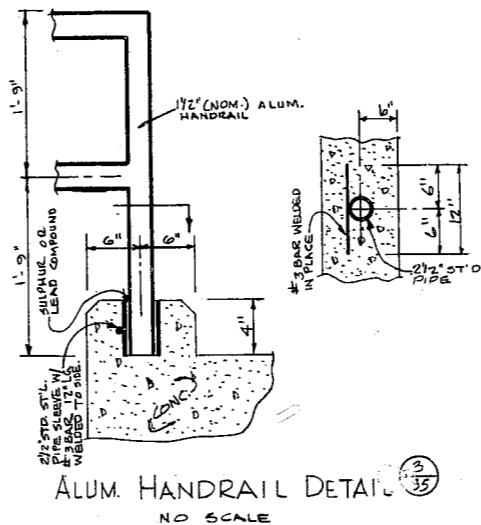
SUMP PUMP DETAIL (2) / 35  
SCALE: 3/4\"/>



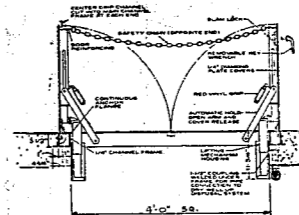
STAINLESS STEEL DRIP PAN (6) / 35  
SCALE: 1\"/>



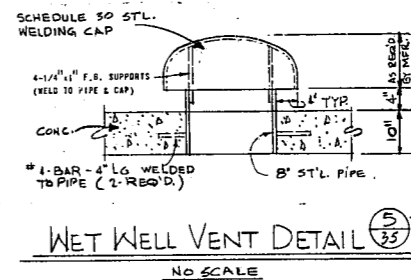
TIE ROD DETAIL (8) / 35  
NO SCALE



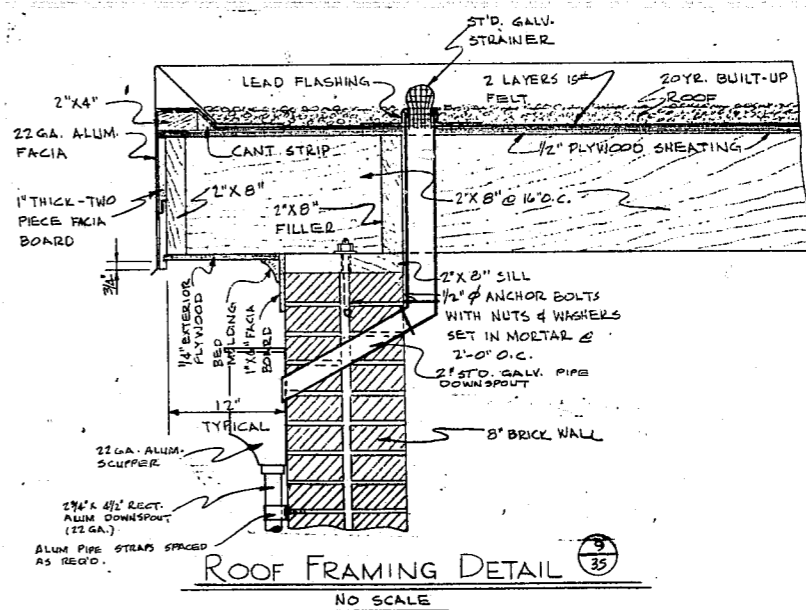
ALUM. HANDRAIL DETAIL (3) / 35  
NO SCALE



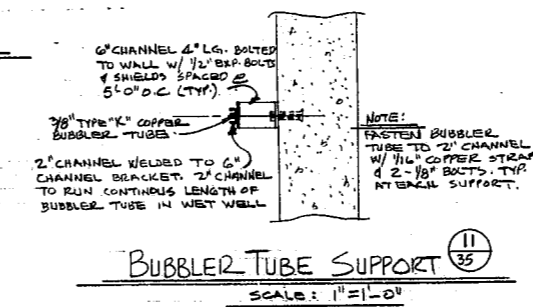
ALUM. HATCH DETAIL (4) / 35  
(FOUR REQUIRED)  
NO SCALE



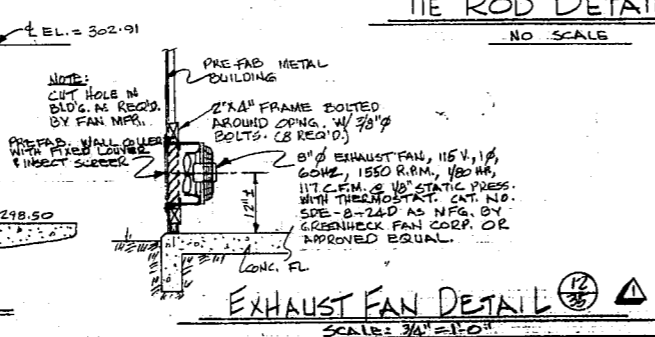
WET WELL VENT DETAIL (5) / 35  
NO SCALE



ROOF FRAMING DETAIL (9) / 35  
NO SCALE



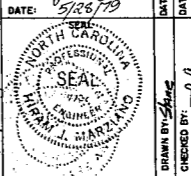
BUBBLER TUBE SUPPORT (11) / 35  
SCALE: 1\"/>



EXHAUST FAN DETAIL (12) / 35  
SCALE: 3/4\"/>

DETAILS			
WASTEWATER IMPROVEMENTS			
TOWN OF CARY			
WAKE COUNTY, NORTH CAROLINA			
MOORE, GARDNER & ASSOCIATES, INC.			
CONSULTING ENGINEERS			
ASHEBORO & GREENSBORO, CARY, NORTH CAROLINA			
APPROVED	DATE	APPROVED	DATE
DESIGNED BY	DATE	APPROVED	DATE
CHECKED BY	DATE	APPROVED	DATE
DRAWN BY	DATE	APPROVED	DATE

ENGINEER: *William J. Mayhans*  
DATE: 5/26/79  
DATE: 6/1/79  
DATE: 6/1/79  
DATE: 6/1/79  
DATE: 6/1/79  
DATE: 6/1/79  
DATE: 6/1/79  
DATE: 6/1/79  
DATE: 6/1/79  
DATE: 6/1/79



SCALE: NOTED  
JOB NO. 207172  
DRAWER NO. 13  
SHEET 35 OF 44