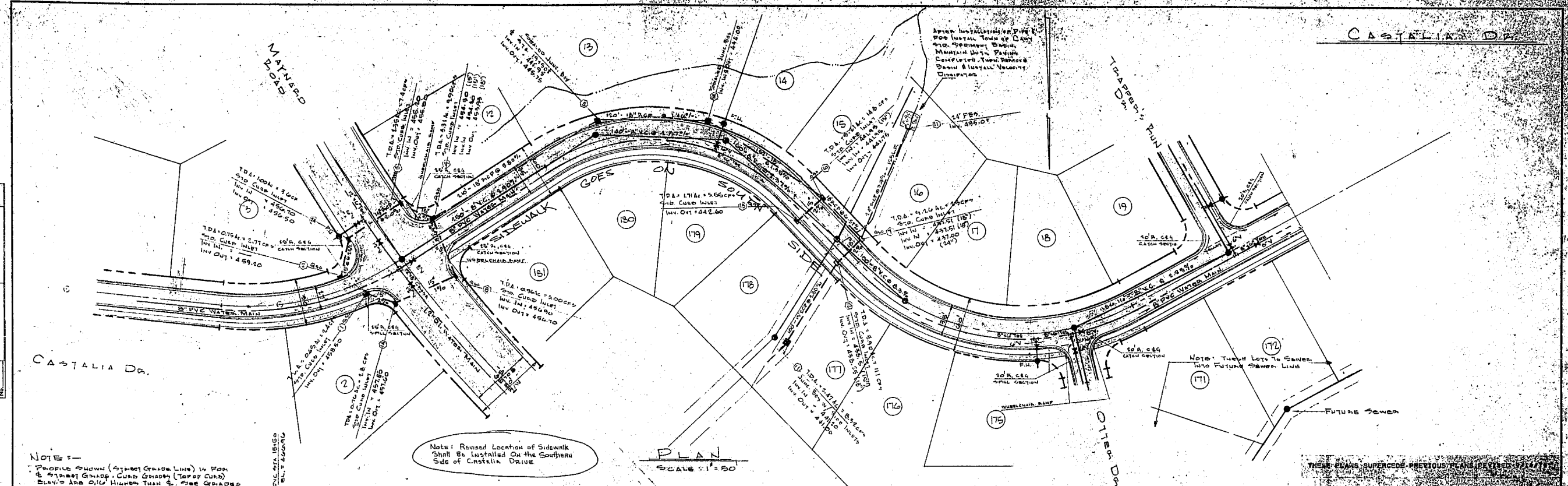


CASTALIA DRAINAGE

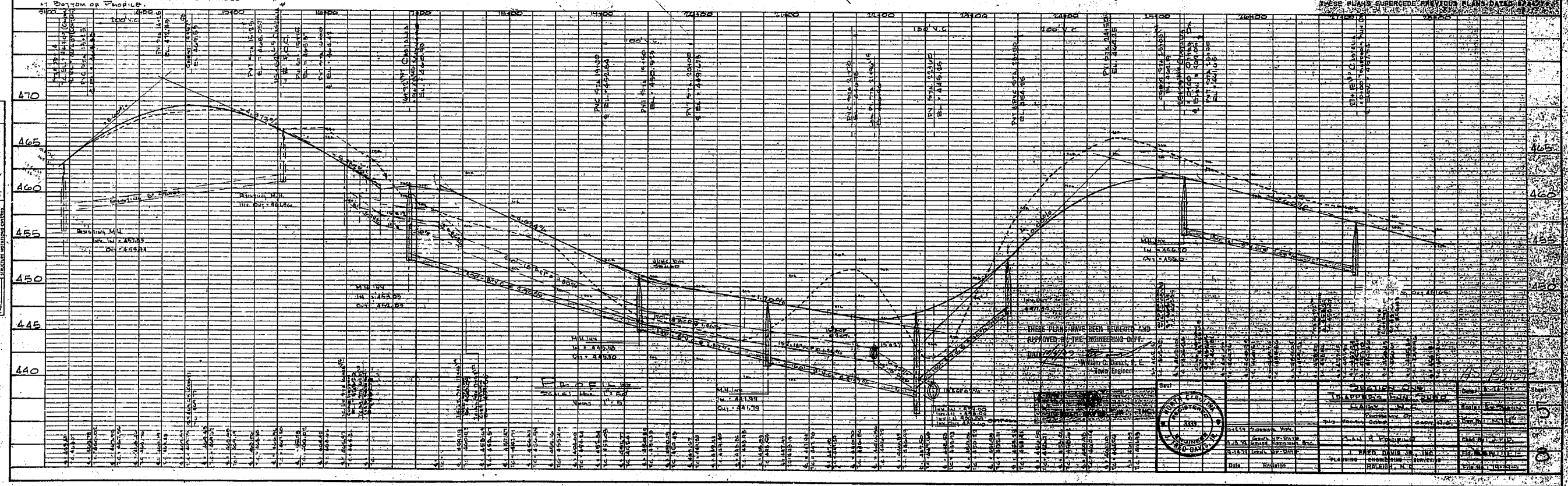


NOTE:-  
 Profile shown (Street Grade Line) in Plan & Street Grade - Catch Basins (Top of CURB) PLAN'S ARE 0.10 HIGHER THAN E. SEE GRADES AT BOTTOM OF PROFILE.

Note: Revised Location of Sidewalk Shall Be Located On the Southern Side of Castalia Drive

PLAN SCALE 1" = 50'

THESE PLANS SUPERCEDE PREVIOUS PLANS DATED 1/25/25



THESE PLANS HAVE BEEN REVIEWED AND APPROVED BY THE ENGINEERING DEPT. OF THE CITY OF CASTALIA, MISSOURI.



NO.	NAME	DESIGNATION	DATE
1	EUGENE DIETZEN	ENGINEER	1/25/25
2	...	...	...
3	...	...	...
4	...	...	...
5	...	...	...