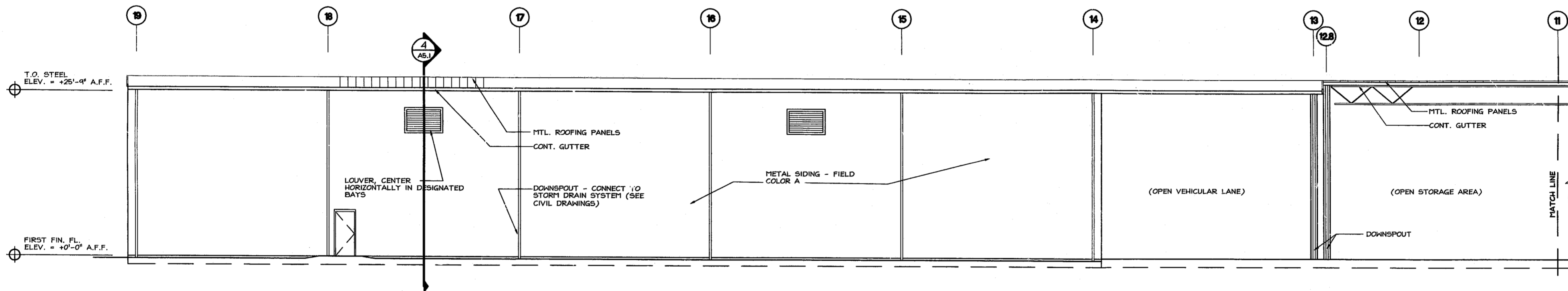
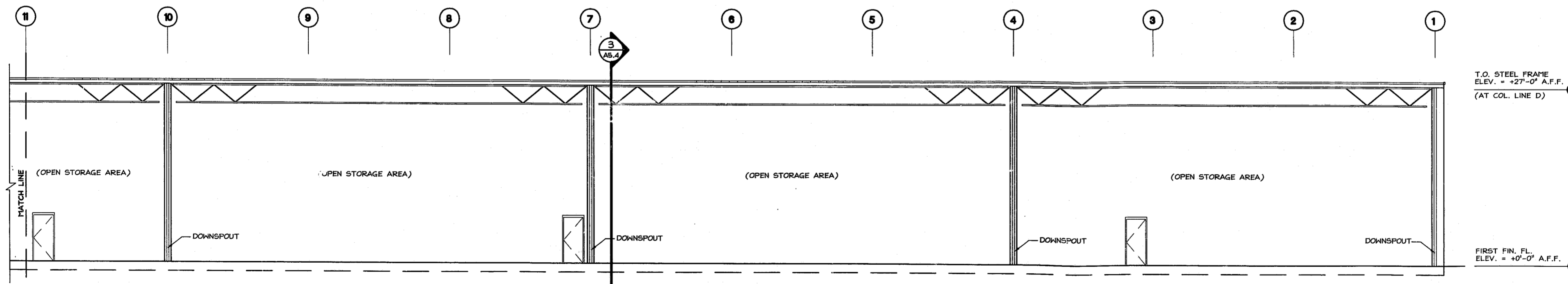


1 WEST ELEVATION
A4.2 1/8" = 1'-0"



2 PARTIAL NORTH ELEVATION
A4.2 1/8" = 1'-0"



3 PARTIAL NORTH ELEVATION
A4.2 1/8" = 1'-0"

GENERAL ELEVATION NOTES:

1. REFER TO STRUCTURAL DRAWINGS FOR ACTUAL FOOTING SIZES AND CONFIGURATIONS

CORNERSTONE ARCHITECTURE P.A.
11/93 Executive Circle
Cary, NC 27511
phone: 919.461.9790
fax: 919.461.9774

NOT FOR CONSTRUCTION

TRIANGLE MATERIALS, INC.
DISTRIBUTION CENTER
Cary, NC.
EXTERIOR ELEVATIONS

NO.	DATE	REVISIONS
1		ISSUED FOR PERIC
2		ISSUED FOR PERIC
3		ISSUED FOR PERIC
4		ISSUED FOR PERIC
5		ISSUED FOR PERIC
6		ISSUED FOR PERIC
7		ISSUED FOR PERIC
8		ISSUED FOR PERIC
9		ISSUED FOR PERIC
10		ISSUED FOR PERIC
11		ISSUED FOR PERIC
12		ISSUED FOR PERIC
13		ISSUED FOR PERIC
14		ISSUED FOR PERIC
15		ISSUED FOR PERIC
16		ISSUED FOR PERIC
17		ISSUED FOR PERIC
18		ISSUED FOR PERIC
19		ISSUED FOR PERIC

SHEET NO.
A4.2
OF 10
1/11/97/001A4-2.dwg