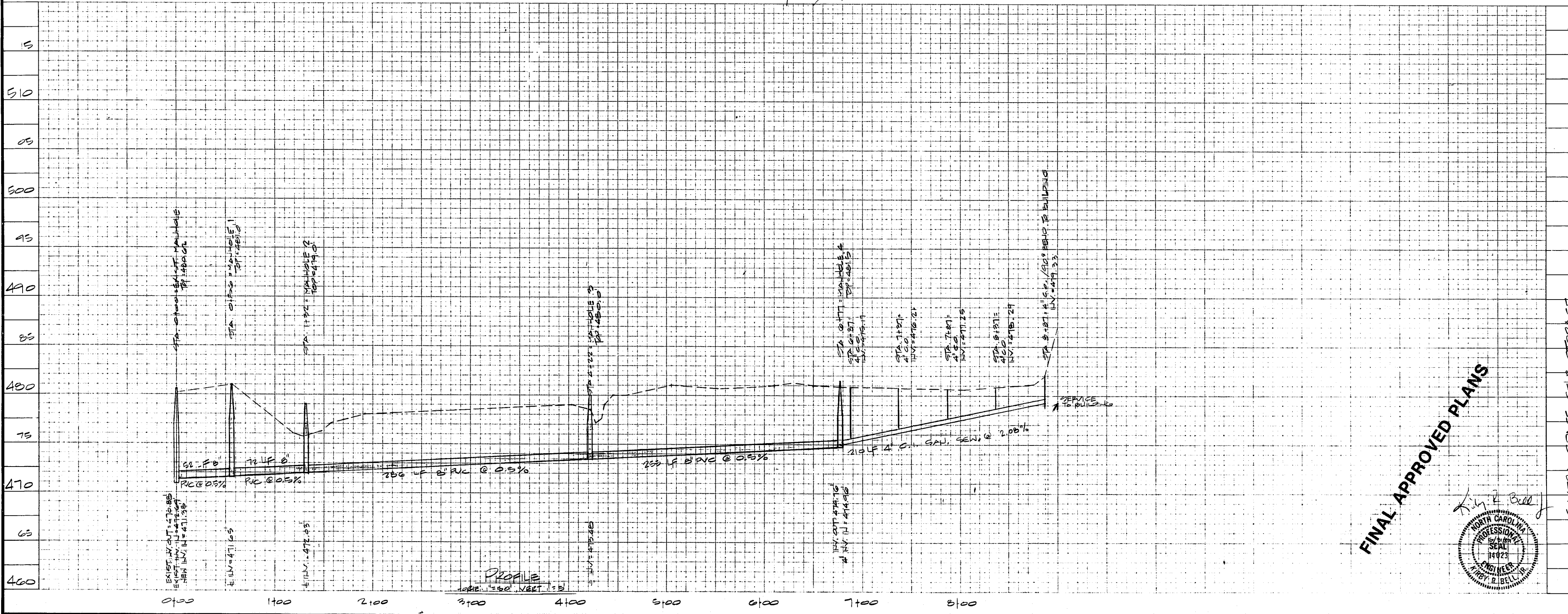
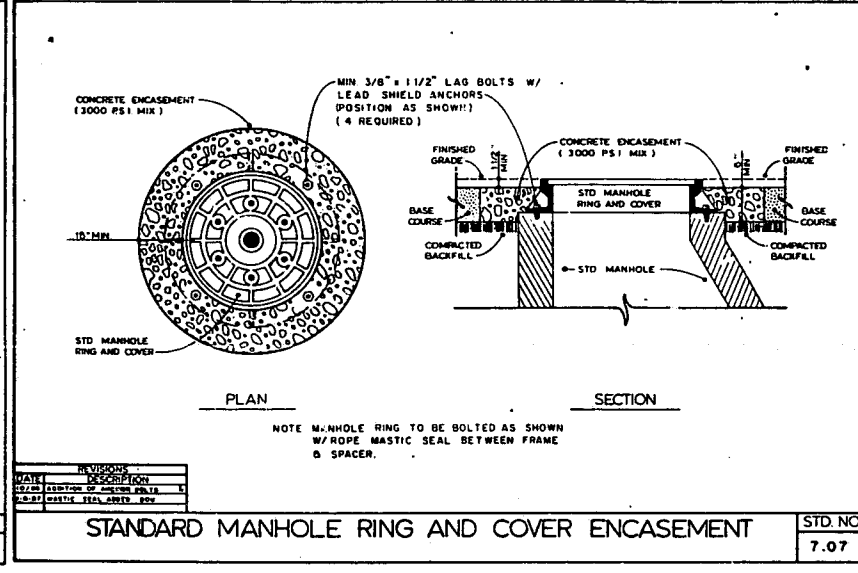
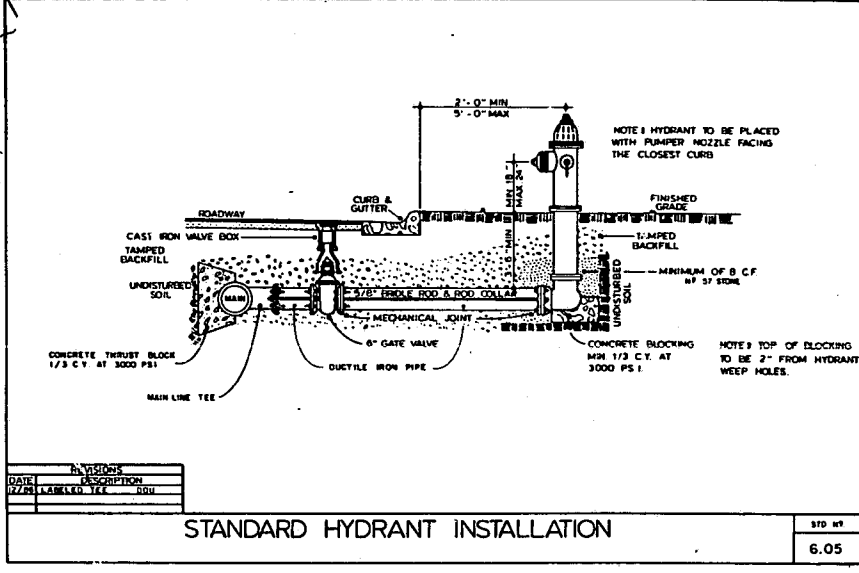


- NOTES: (TOWN OF CAST)
1. SANITARY SEWER: ALL SANITARY SEWER LINES SHALL BE PROVIDED FOR ALL UNITS WITH FINAL FLOOR FINISH OF BUILDINGS. ALL SANITARY SEWER LINES SHALL BE 4 INCH DIA. UNLESS OTHERWISE SPECIFIED.
 2. MINIMUM GROUND COVER OF 3 FEET TO BE PROVIDED FOR ALL SANITARY SEWER COLLECTION LINES 4 INCHES AND LARGER IN DIAMETER AREAS.
 3. MINIMUM COVER OF 4 FEET IN TRAFFIC AREAS TO BE PROVIDED FOR ALL COLLECTION LINES 4 INCHES AND LARGER. IF LESS THAN 4 FEET, DOUBLE THE COVER. COVER SHALL BE NO LESS THAN 3 FEET.
 4. MINIMUM CLEARANCE FROM ALL SANITARY SEWER COLLECTION LINES SHALL BE NO LESS THAN 1.5 FEET WITH CLEARANCE EVERY 50 LINEAL FEET.
 5. MINIMUM CLEARANCE FROM ALL SANITARY SEWER COLLECTION LINES SHALL BE NO LESS THAN 1.5 FEET WITH CLEARANCE EVERY 50 LINEAL FEET.
 6. MAINTAIN 12 INCH VERTICAL SEPARATION FROM STORM SEWER OR SCEPTER LINES FOR SANITARY SEWER. 12 INCH VERTICAL SEPARATION FROM OTHER UNDERGROUND UTILITIES AND 10 FEET HORIZONTAL SEPARATION FROM ALL OTHER UNDERGROUND UTILITIES AND 10 FEET HORIZONTAL SEPARATION FROM WATER MAINS OR PRIVATE SIDE OF WATER METERS.
- WATER:
1. WATER MAIN TO BE INSTALLED AT A DEPTH WITH A MINIMUM COVER OF 36 INCHES WITH 12 INCHES VERTICAL CLEARANCE WITHIN FROM OTHER UNDERGROUND UTILITIES AND 10 FEET HORIZONTAL CLEARANCE FROM ALL OTHER UNDERGROUND UTILITIES AND 10 FEET HORIZONTAL CLEARANCE FROM PRIVATE SIDE OF WATER METERS.
 2. PRESSURE REDUCING VALVE SHALL BE PROVIDED IF PRESSURE IS IN EXCESS OF 80 PSI. PRESSURE REDUCER OR FOR WATER SERVICES SHALL BE ON PRIVATE SIDE OF WATER METERS.
- GENERAL:
1. ALL WATER AND SEWER MAINS WITHIN PUBLIC EASEMENTS AND RIGHT-OF-WAYS TO BE OWNED, OPERATED AND MAINTAINED BY THE PUBLIC AUTHORITY.
 2. ALL CONSTRUCTION TO BE OF THE LOCAL AUTHORITY STANDARDS.
 3. ALL UNDERGROUND UTILITIES ARE APPROXIMATELY LOCATED. ACTUAL LOCATION AND DEPTH TO BE CONFIRMED IN FIELD BEFORE CONSTRUCTION.
 4. BEFORE CONSTRUCTION ANY CONTRACTOR IMPROVEMENTS WITHIN ANY CITY OR COUNTY OR JURISDICTION OR RECORD RIGHT-OF-WAY FOR ANY PUBLIC UTILITIES, TRAFFIC ENGINEERING DEPT. FOR INFO ON RECORDS. GREAT CARE SHOULD BE TAKEN FOR ANY CONSTRUCTION WITHIN RECORDS. CONTRACTOR SHALL OBTAIN ALL RIGHTS AND ENCUMBRANCES (EASEMENTS OR ENGINEERING OR ANY OTHER RIGHTS AND EASEMENTS) (EASEMENTS OR ENGINEERING OR ANY OTHER RIGHTS AND EASEMENTS) (EASEMENTS OR ENGINEERING OR ANY OTHER RIGHTS AND EASEMENTS) 14 DAYS IN ADVANCE BEFORE PLACING CURB AND GUTTER; 919-351-1111
- | REVISION | NO. | DATE | BY | DATE |
|--|-----|------|----|------|
| ENCLAWMENT FORM 14.1 (2 PARTY UTILITY) | | | | |
| ENCLAWMENT FORM 14.1 (2 PARTY UTILITY) | | | | |
| ENCLAWMENT FORM 14.1 (2 PARTY UTILITY) | | | | |
| ENCLAWMENT FORM 14.1 (2 PARTY UTILITY) | | | | |



FINAL APPROVED PLANS

EXTRA SPACE SELF-STORAGE
TRINITY ROAD DEVELOPMENT
OWNER: SHILOH (QUALITY) MARKS
CART, NAKE COUNTY, NORTH CAROLINA

Scale: 1" = 20' HORIZ. 1" = 2' VERT.

Professional Engineer Seal: T. R. Bell, No. 14923, State of North Carolina.

BASS, NIXON & KENNEDY, INC., CONSULTING ENGINEERS
919 / 851-4422 / 7416 CHAPEL HILL ROAD, RALEIGH, N. C. 27607

| NO. | DATE | REVISIONS |
|-----|---------|-----------|
| 1 | 7/19/14 | |
| 2 | 7/17/14 | |
| 3 | 8/22/14 | |
| 4 | 8/22/14 | |

SHEET 4 OF 5