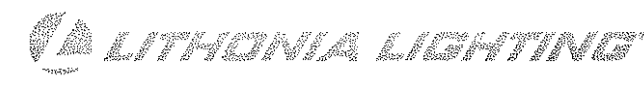


CUT SHEET FOR TYPE 'BY'



FEATURES & SPECIFICATIONS

**INTENDED USE** — Architectural deep cut luminaire provides general illumination for exterior or interior applications. Ideal for high-contrast landscape and architectural applications where safety and security are a concern. Certain inherent characteristics cause dimming intensity of luminaire. (See Note for dimming information.)

**Attributes** — Designed to complement building architecture and reduce exterior environmental conditions and visual noise.

**CONSTRUCTION** — Sheet One-piece, marine grade die-cast aluminum, low copper alloy (C90400), 1/2 inch thick. End caps and screws to housing with stainless steel (A307) set screws (not included) or optional stainless steel tamper resistant cover (see options).

Housing the piece, marine grade die-cast aluminum, low copper alloy (C90400), with textured polyester powder coat finish standard. For hole mounting detail for use directly over outlet box, or conduit entry through floor (1/2 inch threaded opening on side or 1/2 inch threaded opening on rear surface of housing).

**Gasket** — High modulus, pressure sensitive gasket (one-piece silicone "V" ring, mechanically held in place) seals all gaps. Gasket is made of silicone. Pad mounting gasket is divided cell neoprene that seals backlight to mounting surface. Gasket helps cushion impact shock.

**Finish** — Standard finish is textured polyester powder coat in white, black or bronze. Optional architectural colors available (see options).

**OPTICS** — Polycarbonate lens, translucent white, injection molded, 1/2 inch thick lens is 1/2 inch thick. Smooth exterior allows for easy cleaning and interior pattern allows light to evenly illuminate. Prismatic lens gasket is one-piece silicone "V" ring, mechanically held in place.

**Glass** — Tempered borosilicate lens, 2.50 inch thick, has smooth exterior for easy cleaning and textured interior. Polycarbonate gasket is continuous one-piece silicone.

**Reflector** — Internal reflector is high-reflectance white powder coat prismatic for maximum light output. Lamp positioning assures uniform brightness and illumination.

**ELECTRICAL** — Base: Class P electronic, high power factor multi-volt with starting temperature of -5°F (-20°C).

**Socket** — High temperature thermoplastic with lamp retentive clip.

**Lamp** — 35W lamp included unless specified LUP.

**INSTALLATION** — Unit may be ceiling or wall mounted.

**LISTINGS** — UL Listed for 15 and 30-watt lamp (see options). NEMA Certified (see options). UL Listed for EMC and EMI/RFI.

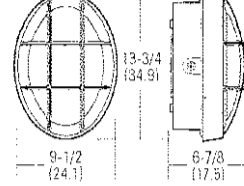
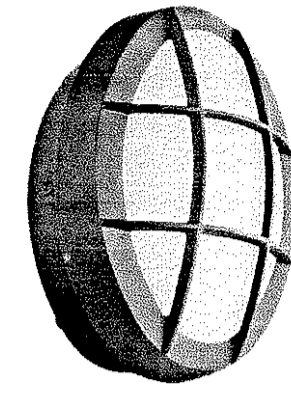
Note: Specifications subject to change without notice.

Project Number	
Date	
Type	BY

**GATEWAY**  
Architectural Rough Service Fixture

**VG05C**

**COMPACT FLUORESCENT**  
Oval Double-Grille  
Deep Housing  
Ceiling/Wall-Mounted



All dimensions in inches (millimeters).

Lead times will vary depending on options selected. Contact with your sales representative.

Example: VG05C 42181 MV01T BRN1C LCP

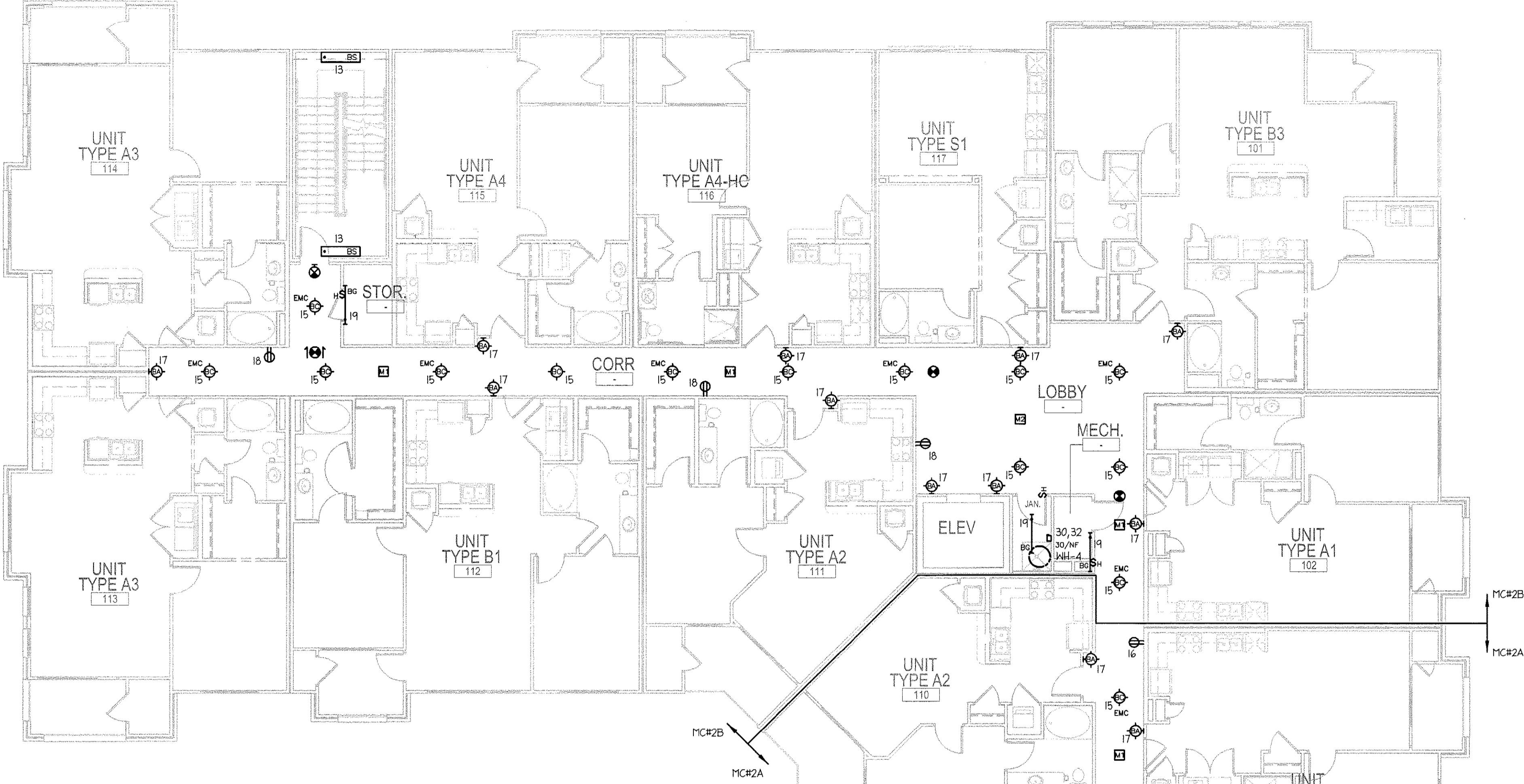
VG05C	ZGDIT	120	DDBT	EL
Series	Lamp Type	Lens	Finish <sup>1</sup>	Options
VG05C	180T One 18W double tube tube lamp	(Blank) Polycarbonate	Standard standard colors	Shipped installed in fixture
180T1	One 18W double tube tube lamp	307	001G White	AKC Advance Mark II electronic dimming ballast <sup>2</sup>
180T2	One 18W double tube tube lamp	307	001B Black	DNR Lutron 10-Line electronic dimming ballast <sup>2</sup>
180T3	One 18W double tube tube lamp	307	001C Dark bronze	EC Emergency circuit (incandescent - 25W max - DC bypass ballast <sup>3</sup> )
180T4	One 18W double tube tube lamp	307	001D Natural aluminum	GC Interact face dimming housing (internal dimming housing)
180T5	One 18W double tube tube lamp	307	001E Sandstone	GMP
180T6	One 18W double tube tube lamp	307	001F Spectra fluorescent colors	ME Night sight (see order form - 400 max - 500K beam)
180T7	One 18W double tube tube lamp	307	001G Bronze	PE Photometric self
180T8	One 18W double tube tube lamp	307	001H Dark gray	TSC Tamper-resistant screws <sup>4</sup>
180T9	One 18W double tube tube lamp	307	001I Green	CSA Listed and labeled to comply with Canadian safety standards
180T10	One 18W double tube tube lamp	307	001J Blue	
180T11	One 18W double tube tube lamp	307	001K Dark red	
180T12	One 18W double tube tube lamp	307	001L Light red	
180T13	One 18W double tube tube lamp	307	001M Light gray	

- Note:
- Not available in 347C.
  - Must be used with electronic ballast (not included) or compatible ballast (not included).
  - See manufacturer's literature for additional options.
  - Maximum wattage lamp provided. Available with 200T and 41T lamps.
  - Must specify voltage. Not available with 200T, 200T1, 200T2, and 200T3.
  - UL listed.
  - 1/2" screws with rubber gaskets.
  - Lamp holder with LCP specified.

Accessories/Options (see separate cut sheet):

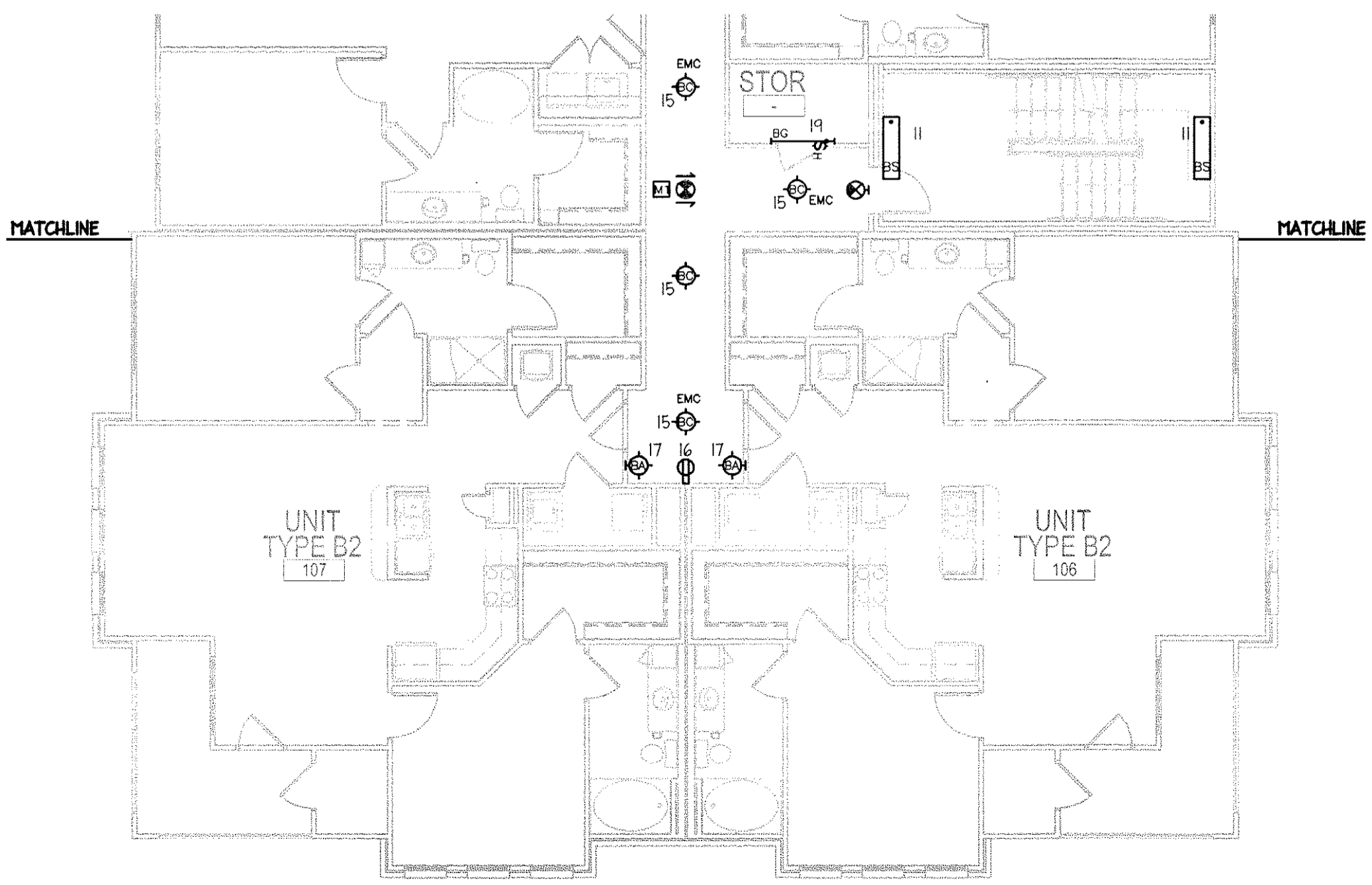
- RK11100R One 1/2" x 1/2" hex base driver bit. Use with GateWay set screws.
- RK11200R Hex base driver bit. Use with tamper-resistant screws with order reject pin.
- RK11300R One 1/2" x 1/2" hex base driver bit. Use with tamper-resistant screws with order reject pin.

Cary Project Number 11-SP-044  
HTE # 44-0375 12-0238  
APPROVED BY THE TOWN OF CARY  
DEVELOPMENT REVIEW COMMITTEE  
Planner *P. Hanna* Date *2/6/12*



**1 BUILDING 2 - LEVEL 1**  
1/8" = 1'-0"

- GENERAL NOTES:
- ALL CIRCUITS SHALL BE CONNECTED TO HOUSE PANEL.
  - ALL TYPE 'BC' FIXTURES SHALL BE CONTROLLED VIA THE CORRIDOR MOTION SENSORS. MOTION SENSORS SHALL BE SET FOR 15-MINUTE DELAY OFF. ALL TYPE 'BA' FIXTURES SHALL OPERATE 24/7.



**2 BUILDING 2 - LEVEL 1 (CONTINUED)**  
1/8" = 1'-0"

2011 LIGHHOUSE ENGINEERING, PA. EXPRESSLY RESERVES ITS COMMON LAW COPYRIGHT AND OTHER PROPERTY RIGHTS IN THESE PLANS. THESE PLANS ARE NOT TO BE REPRODUCED, CHANGED OR COPIED IN ANY FORM OR MANNER WHATSOEVER, NOR ARE THEY TO BE ASSIGNED TO ANY THIRD PARTY WITHOUT FIRST OBTAINING THE EXPRESSED WRITTEN PERMISSION AND CONSENT OF LIGHHOUSE ENGINEERING, PA.

**J DAVIS ARCHITECTS**  
 510 Glenwood, Suite 201 | Raleigh, North Carolina 27603 | Tel 919.835.1500 | Fax 919.835.1510

**LIGHHOUSE ENGINEERING**  
 400 W. Morgan Street, Suite 100  
 Raleigh, North Carolina 27605  
 Tel 919.835.9781  
 Fax 919.835.9784

Dominion Realty Partners  
**Tryon Place at Cary Parkway**  
 6475 Tryon Road  
 Cary, North Carolina

NORTH CAROLINA  
 PROFESSIONAL ENGINEER  
 SEAL  
 26598  
 PAUL S. SCOTT  
 JUN 30, 2012

PROJECT:	DRP-10032	DATE:	
REVISIONS:	HUD REVIEW	12.05.2011	
DRAWN BY:	JRS		
CHECKED BY:	PSS		
CONTENT:	ELECTRICAL		
	BUILDING PLANS		

**E2.21**