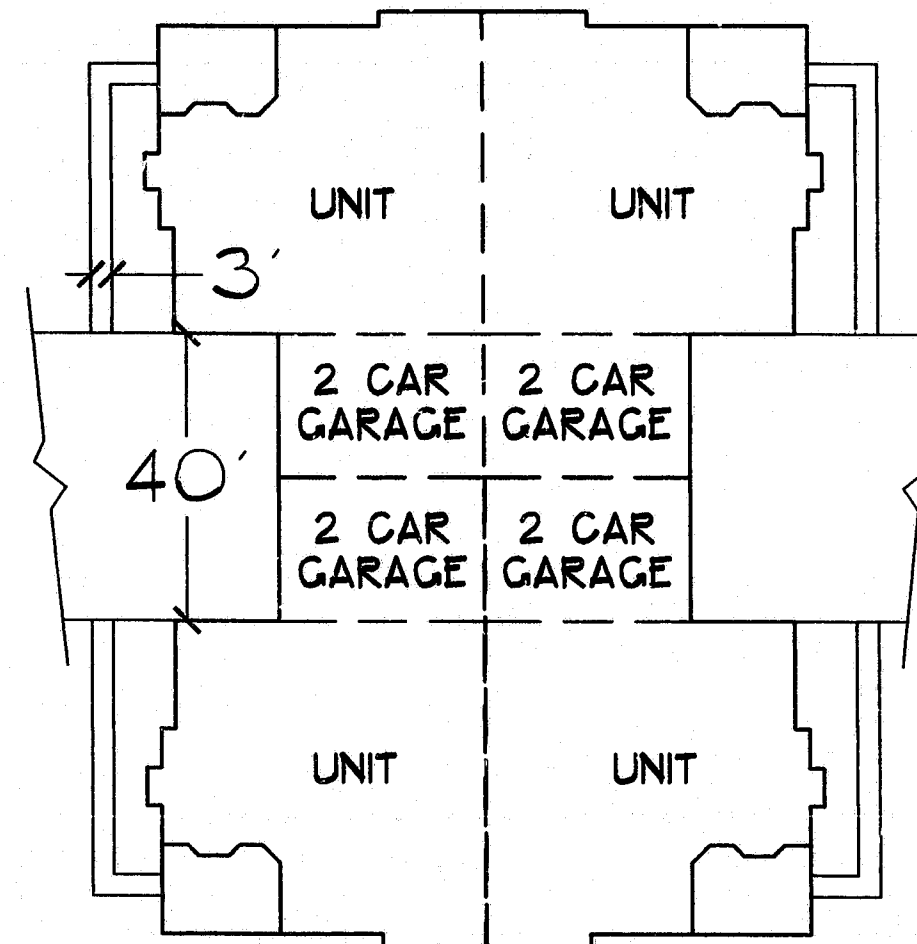
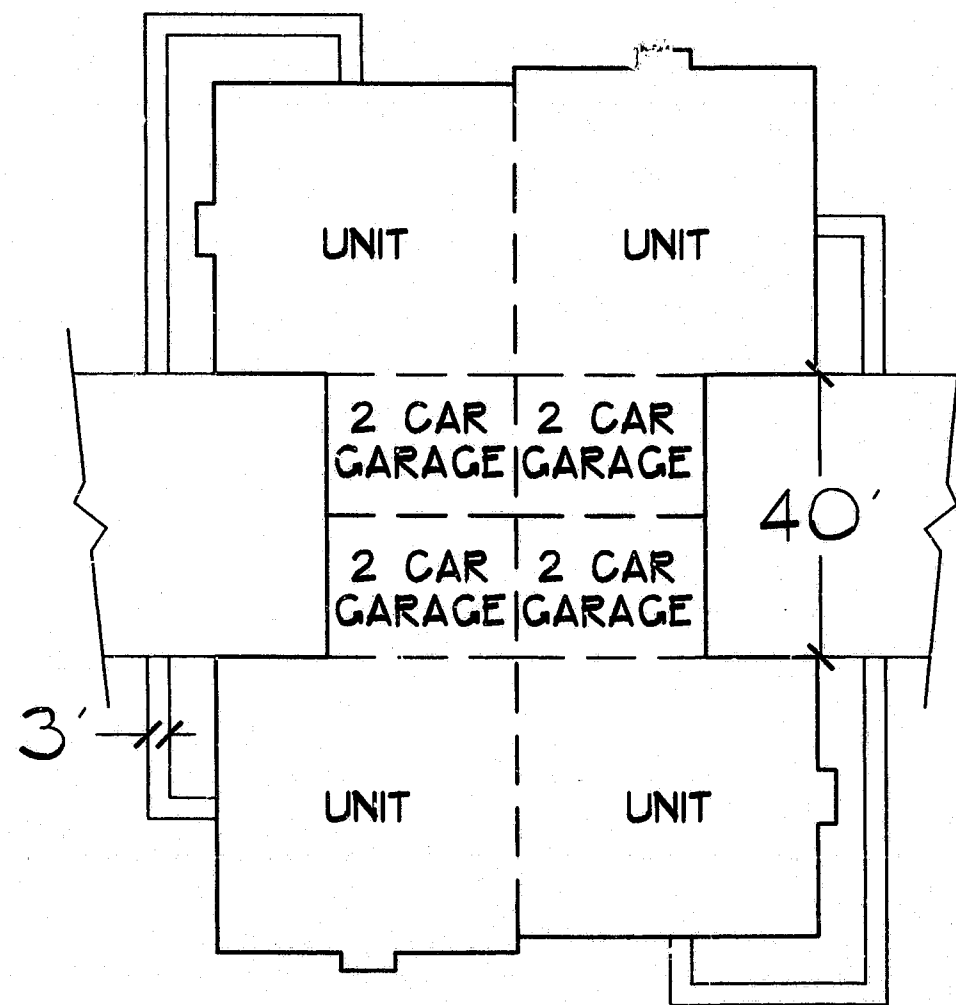
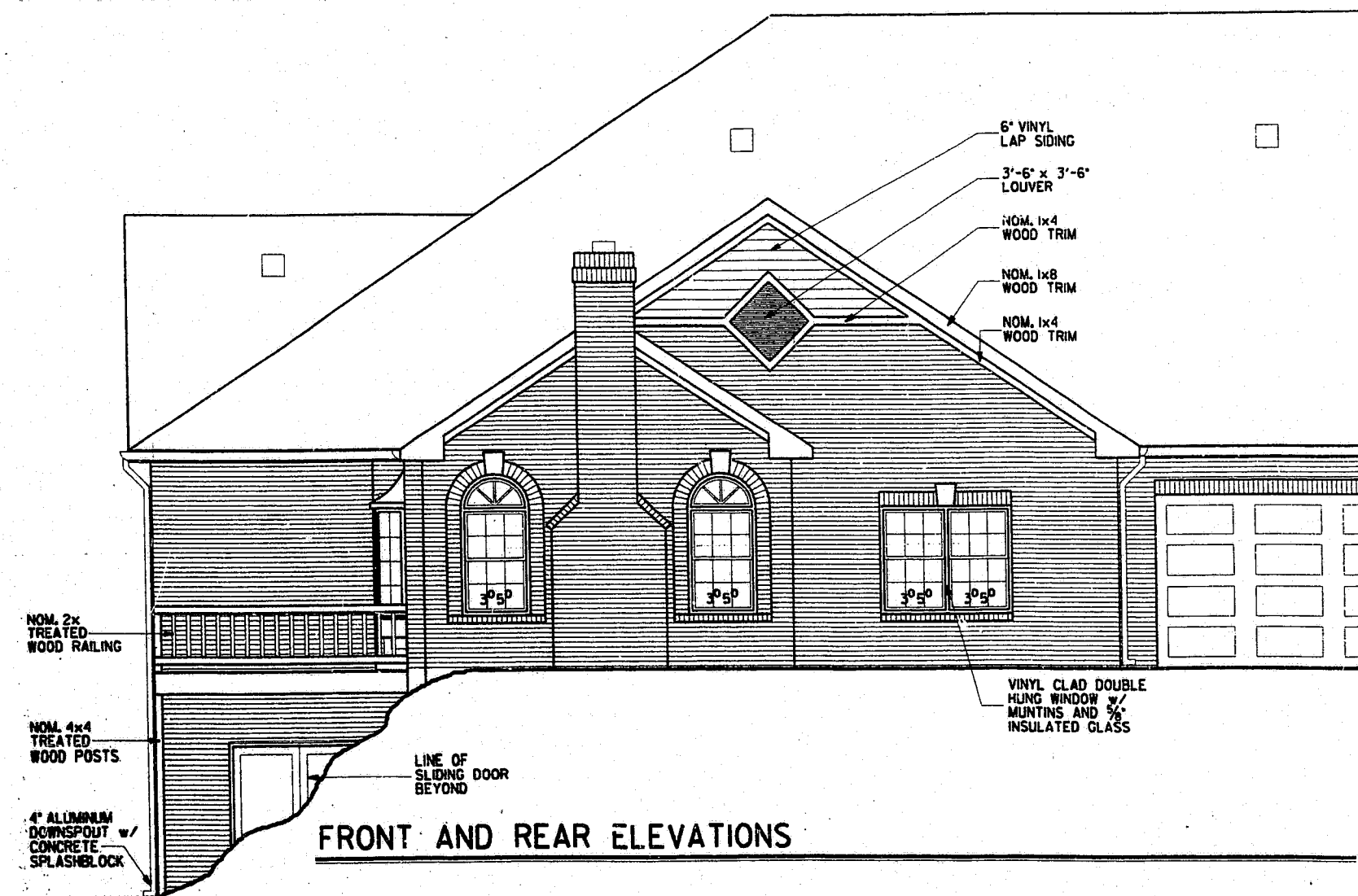


1 STORY BUILDINGS - 4 UNITS PER BUILDING



POTENTIAL FOR WALK-OUT BASEMENT FOR TWO UNITS (THIS UNIT ONLY)



FRONT AND REAR ELEVATIONS

ETd

ELAM, TODD & FAMBROSI, PA

Urban Planning /
Landscape Architecture

289 Nottingham Drive
Cary, North Carolina 27511
919/467-9577
ELAM@MENDSPRING.COM

DEVELOPER:
WEBB CHARLOTTE, INC.
1570 JOHN J. DELANEY DRIVE
SUITE 300
CHARLOTTE, NORTH CAROLINA 28277

ENGINEER:
BASS, NIXON & KENNEDY, INC.
7405 CHAPEL HILL ROAD
RALEIGH, NORTH CAROLINA 27607

Drawn By: EVC
Checked By: RJL
Date: ?
Proj#: ?

Revisions
22 JUN 98 REV.
27 JUL 98 REV.

THE VILLAGE OF TROON
AT KILDARE
CARY, NORTH CAROLINA

BUILDING
DETAIL

Sheet

APPROVED
TER 10-16-98
TM 10-20-98

7