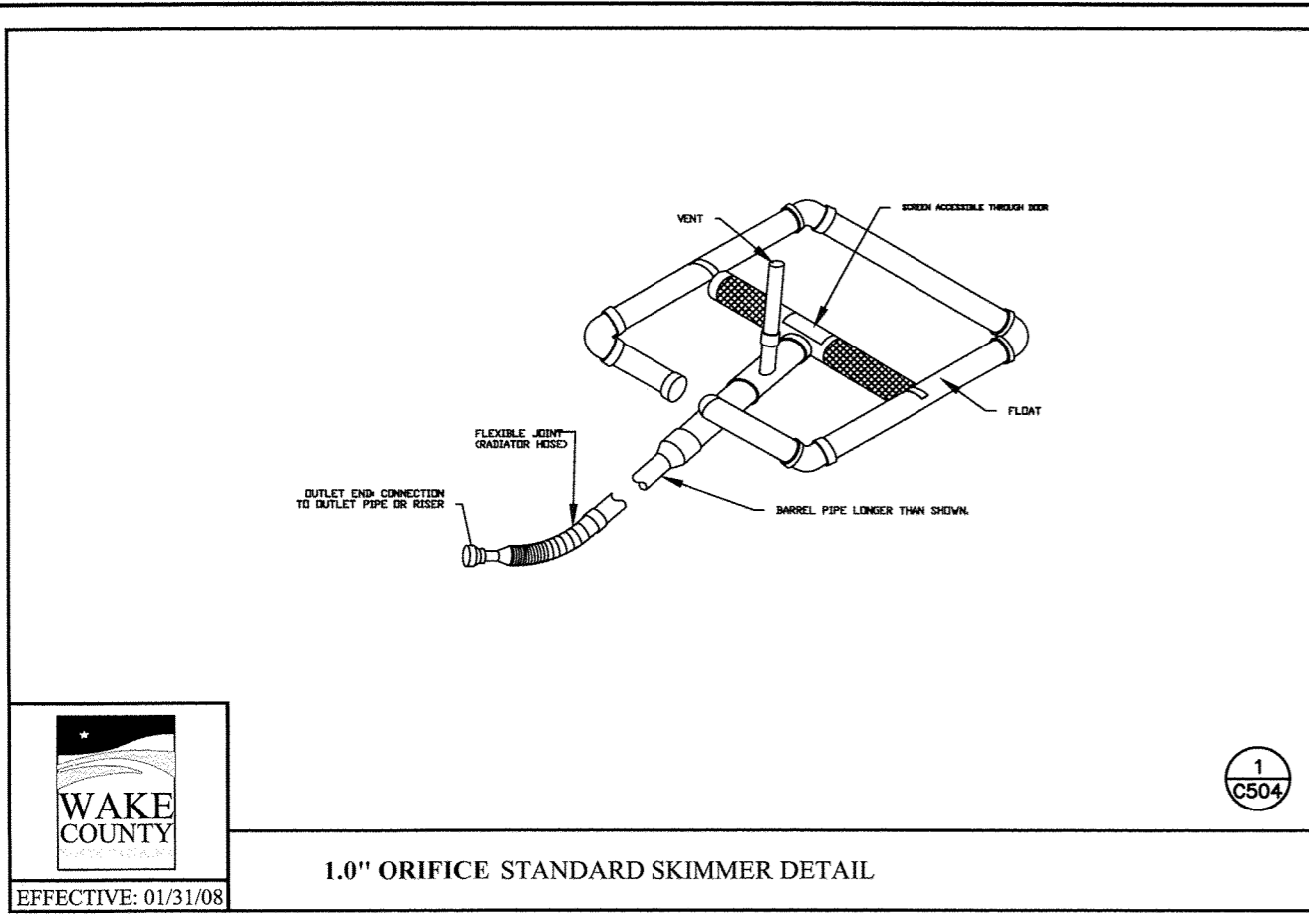
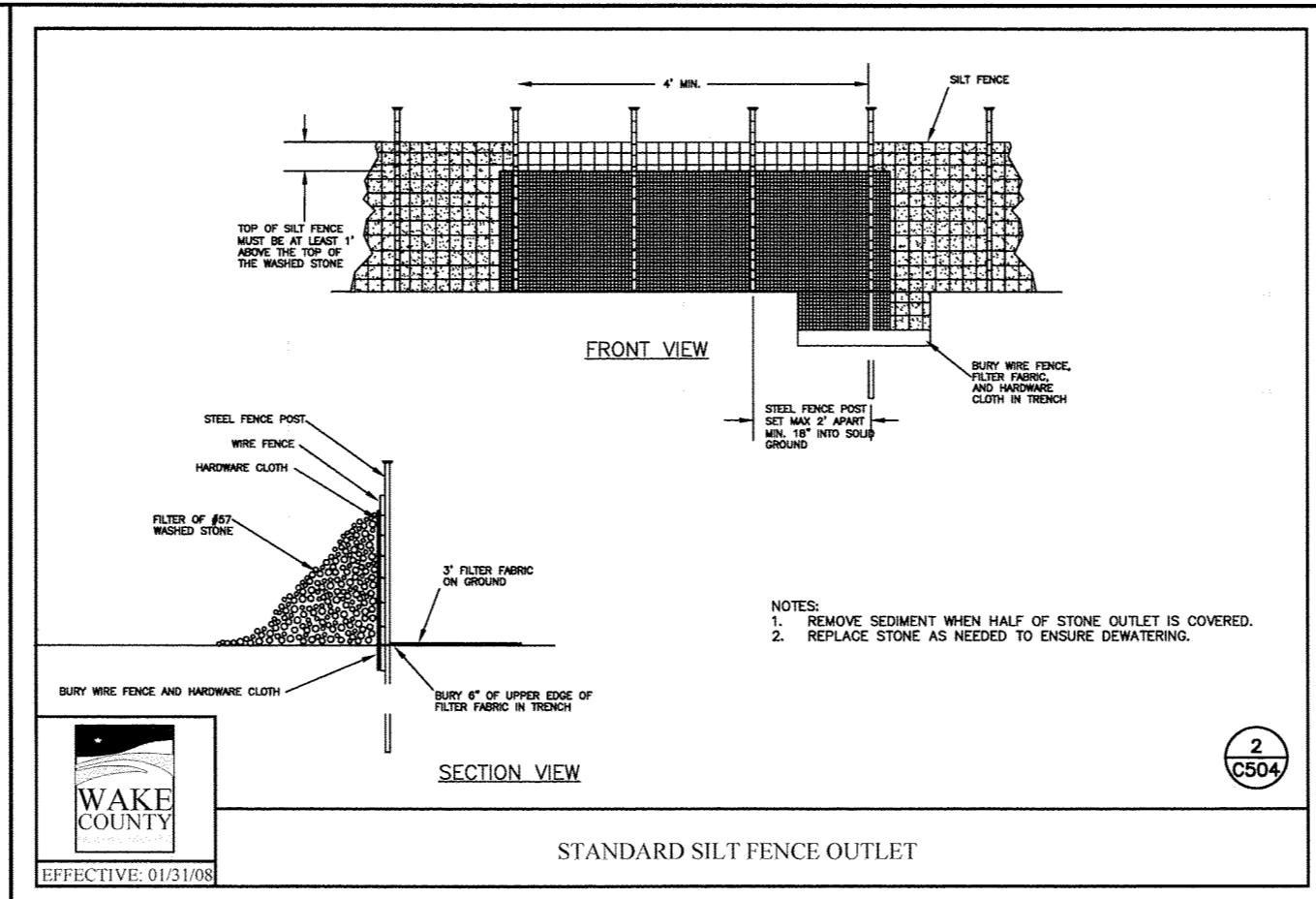


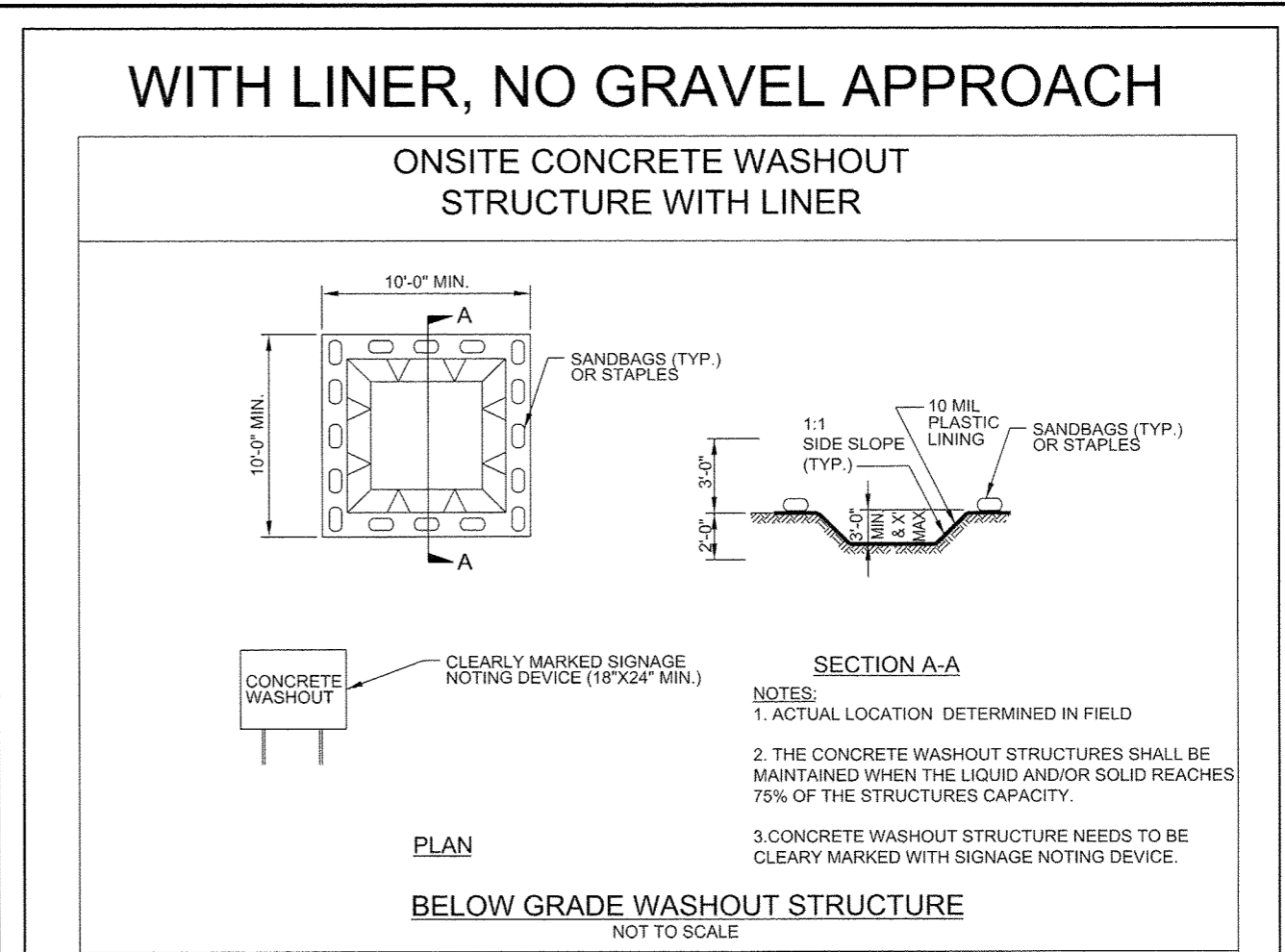
Layout Tab Name: C504 SOIL EROSION DETAILS, Images: logo_redone.jpg, Xrefs: 075356-TBLK.dwg, SkimmerDetail.dwg, SkimmerBasin.dwg, RockDamSedBasin.dwg, SiltFenceOutlet.dwg
 Last Saved By: ladininski, 12/1/2017 1:42:51 PM
 G:\DE\Clients\WaterWalk\075356 Morrisville, NC\4.0 Disciplines\Civil\Cadd\Cd\075356-C504-ERO-DET.dwg Plotted By: laozinski, Jake Plotted: January 17, 2018, 2:50:57 PM



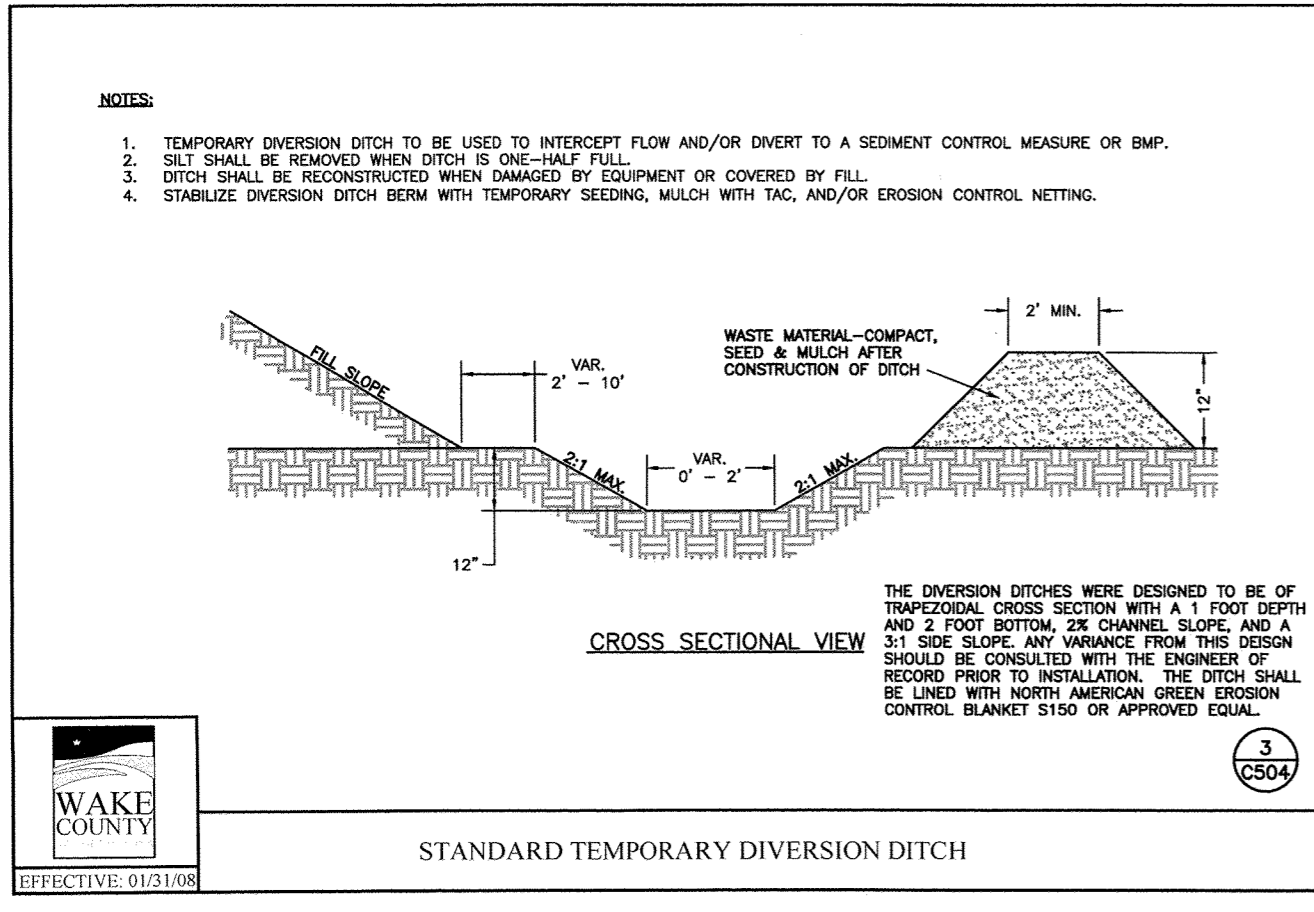
1.0\"/>



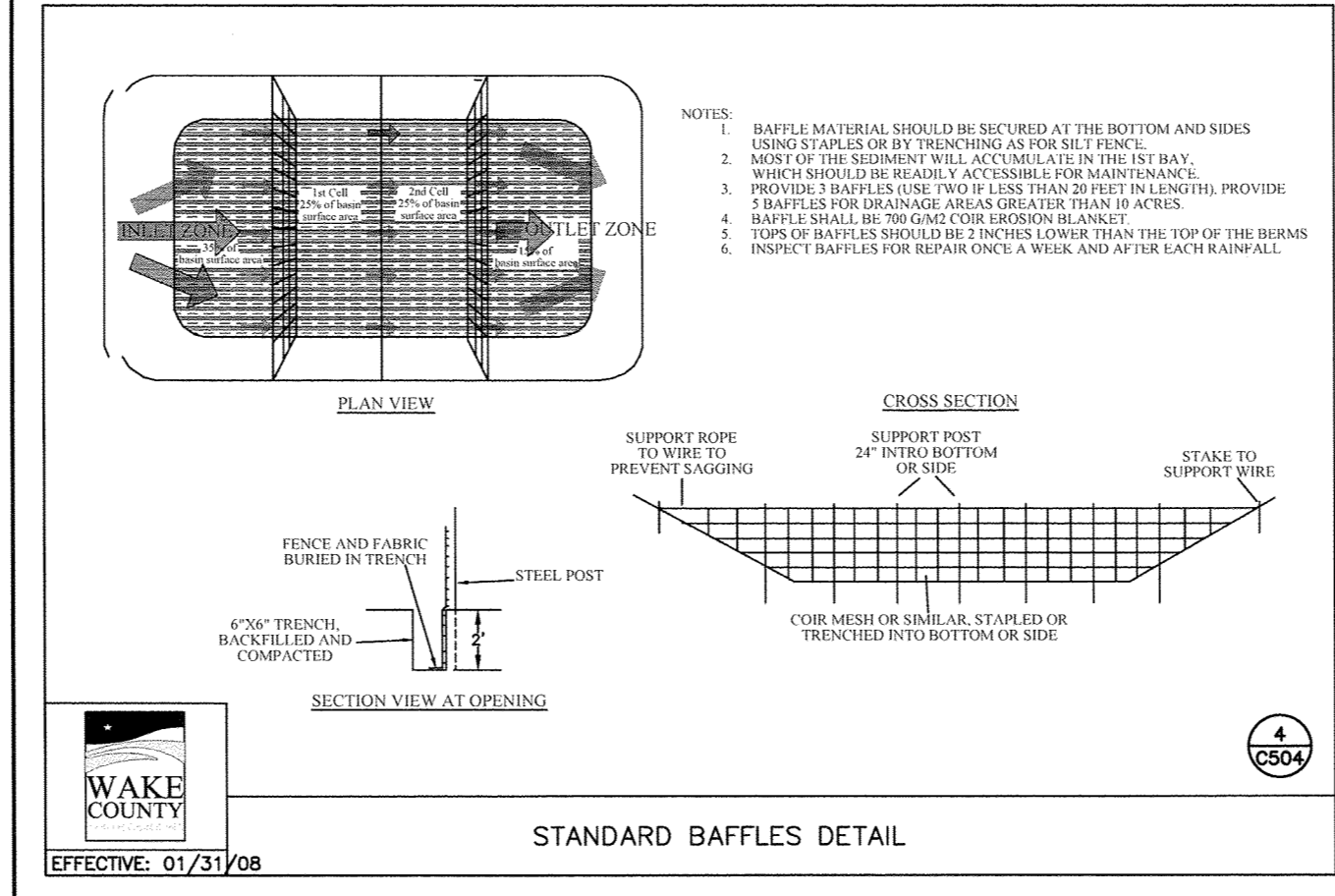
STANDARD SILT FENCE OUTLET



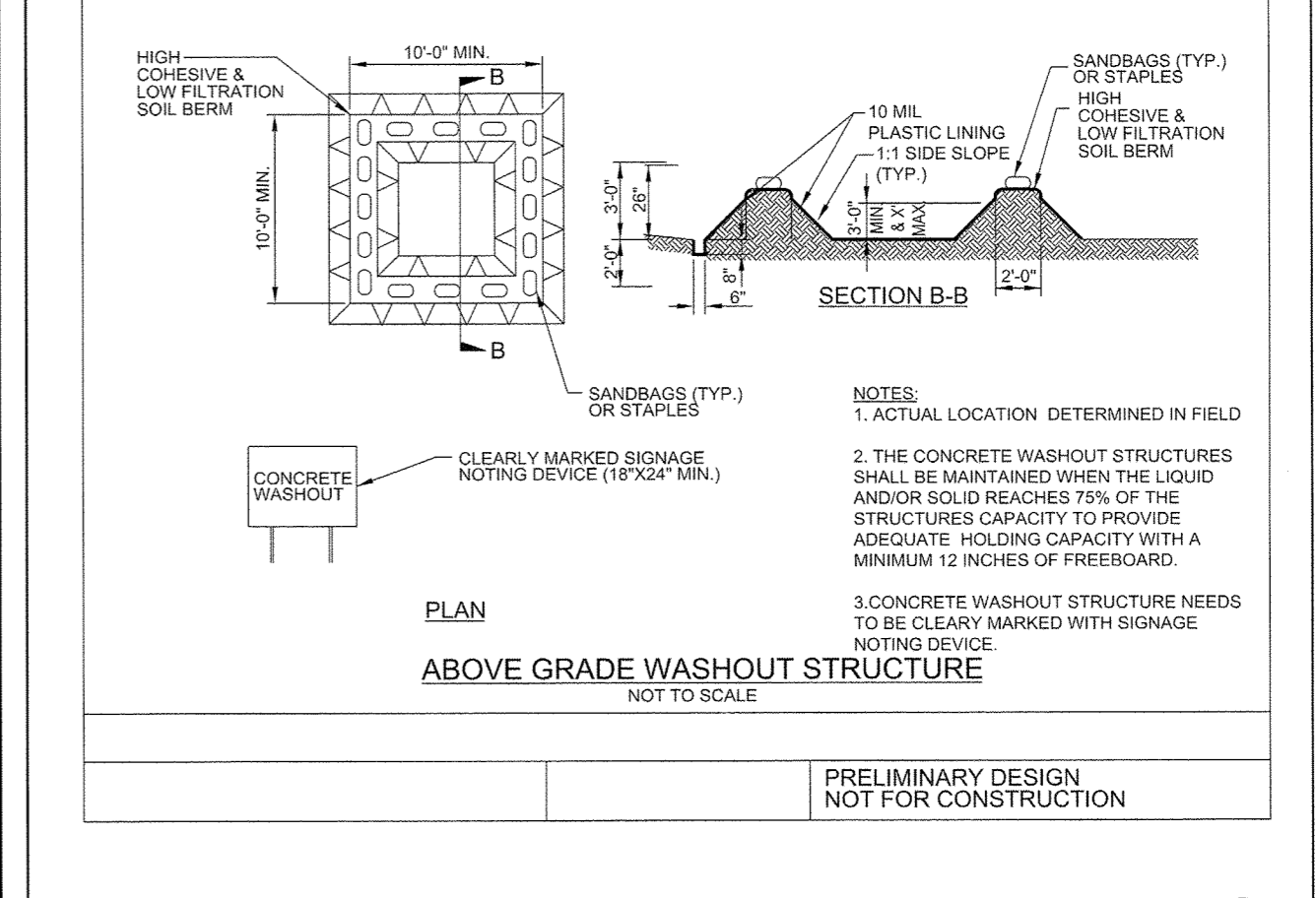
WITH LINER, NO GRAVEL APPROACH



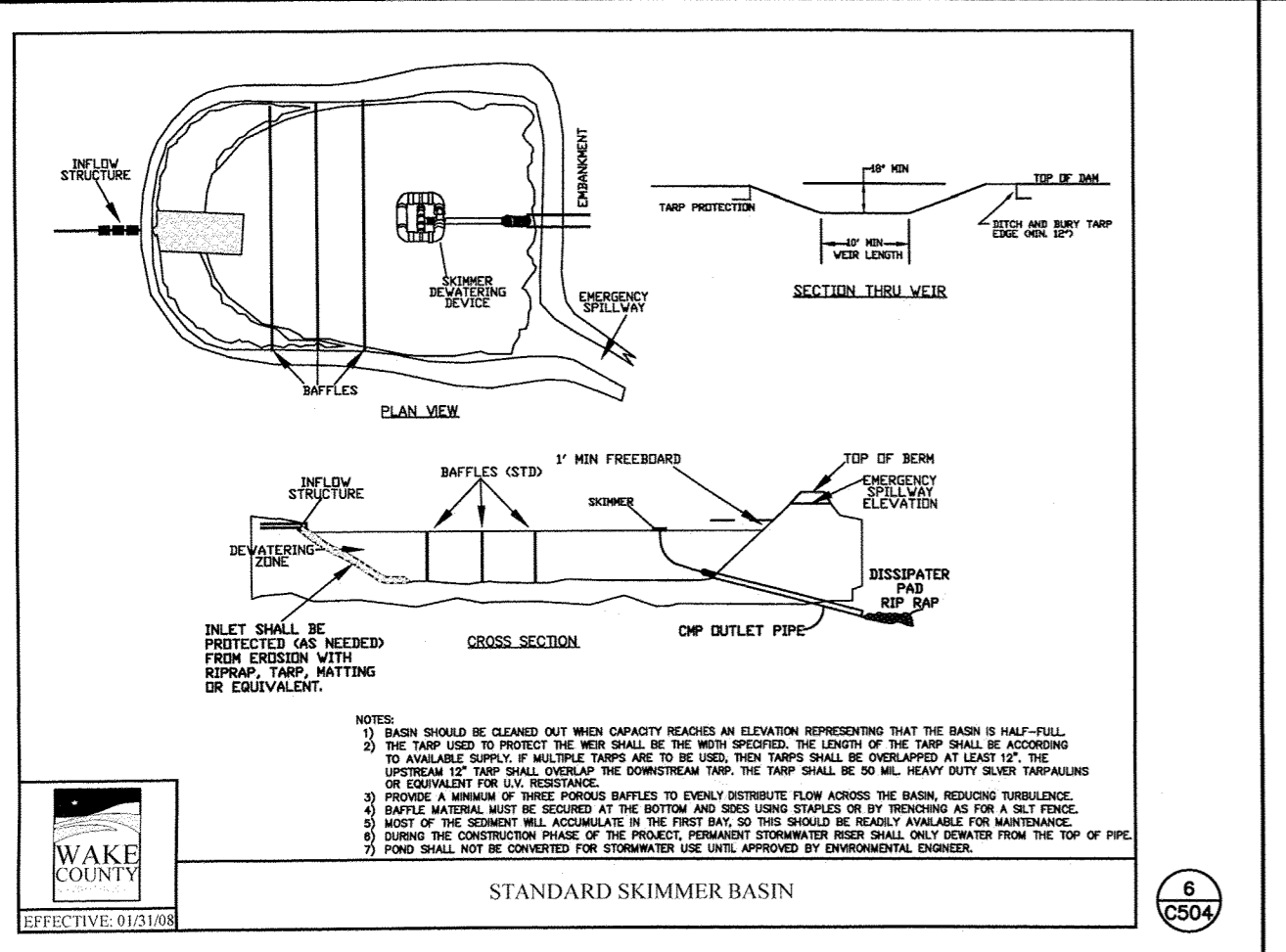
STANDARD TEMPORARY DIVERSION DITCH



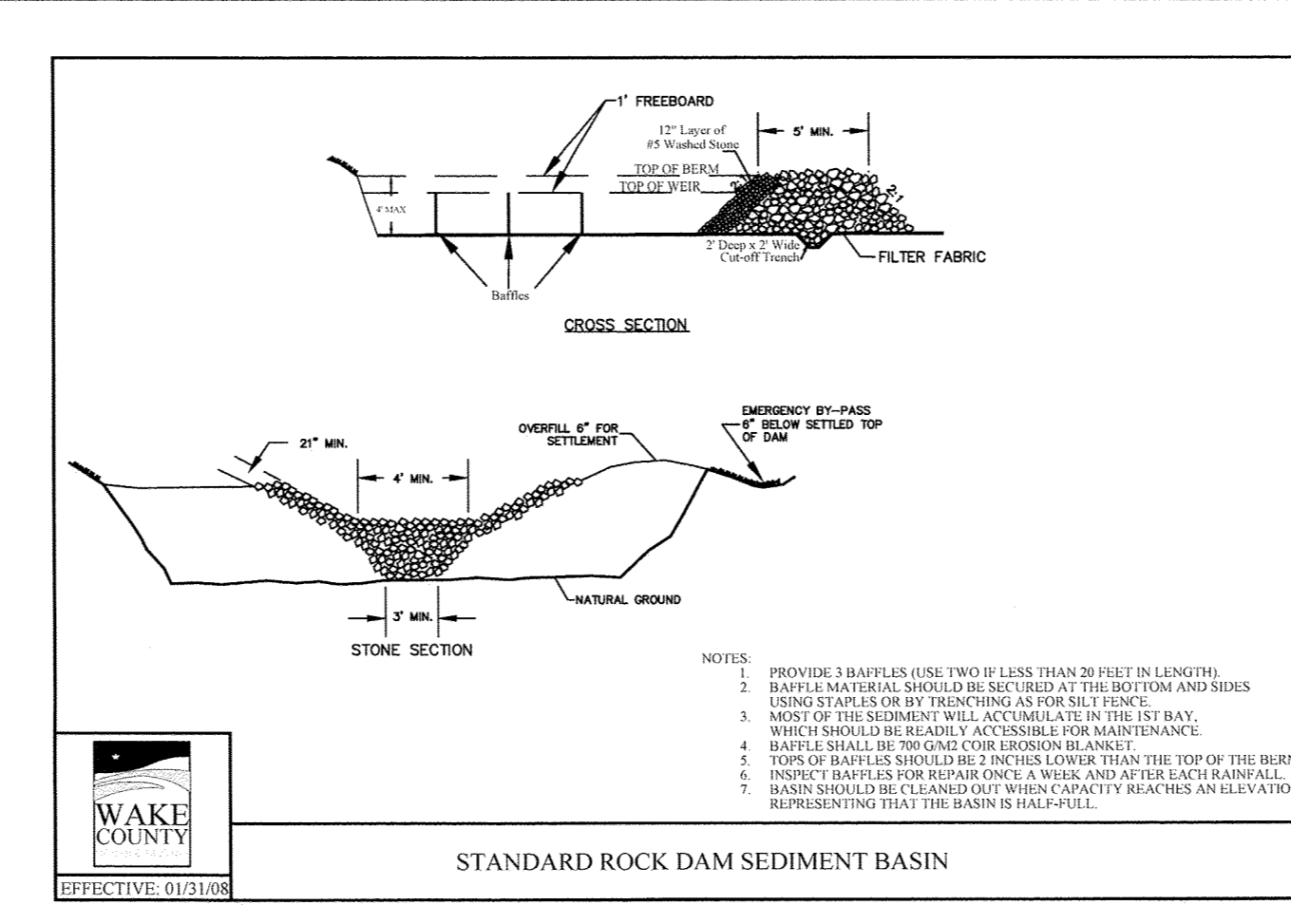
STANDARD BAFFLES DETAIL



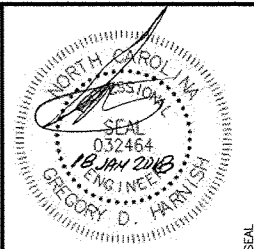
ABOVE GRADE WASHOUT STRUCTURE



STANDARD SKIMMER BASIN



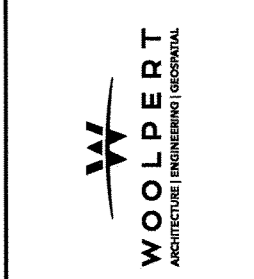
STANDARD ROCK DAM SEDIMENT BASIN



REVISION	DATE	NO.

PROJECT NO: 075356
 DATE: 01/24/17
 DES: JG
 DR: JL
 CKD: TR

11301 Carmel Commons Blvd.
 Suite 300
 Charlotte, NC 28226
 704.525.6284
 FAX: 704.525.8529



PRELIMINARY DESIGN
 NOT FOR CONSTRUCTION

SITE IMPROVEMENT PLANS
WATERWALK MORRISVILLE
 1012 & 1016 LOWER SHILOH WAY
 MORRISVILLE, NORTH CAROLINA

SOIL EROSION DETAILS

MORRISVILLE PROJECT #: 17-1100001 FILE #: 17-0001-S/C

Town of Morrisville
 APPROVED FOR CONSTRUCTION

Signature: [Signature] Date: 5/31/18
 Town of Morrisville, Town Engineer

Signature: [Signature] Date: 5/31/18
 Town of Cary Utilities, Water and Sewer

Engineering Inspection Services must be contacted (919) 463-6907 at a minimum 24 hours prior to the commencement of any construction activities.