

MORRISVILLE PROJECT #: 17-1100001 FILE #: 17-0001-S/C

Town of Morrisville
APPROVED FOR CONSTRUCTION

Signature: *[Signature]* Date: *5/21/18*
Town of Morrisville, Town Engineer

Signature: _____ Date: _____
Town of Cary Utilities, Water and Sewer

Engineering: *5/21/18 RUP*
Planning: *2/27/18 gwl/18*
Other (Specify): *Stille JRF (SW)*

Engineering Inspection Services must be contacted (919) 463-6907 at minimum 24 hours prior to the commencement of any construction activities.

- ### GENERAL NOTES
- PRE-FINISHED METAL COPING TO MATCH SHERWIN WILLIAMS SW-7033 BRAINSTORM BRONZE
 - NO ROOFTOP EQUIPMENT SPECIFIED.
 - FASCIA SIGNS REQUIRE SEPARATE APPROVAL. ANY SIGNS PROPOSED ARE FOR ILLUSTRATIVE PURPOSES ONLY.
 - UTILITIES ABOVE GRADE OUTSIDE OF THE BUILDING TO MATCH SHERWIN WILLIAMS SW-7051 ANALYTICAL GRAY
 - ALL METAL MATERIALS TO BE PREFINISHED PRIOR TO DELIVERY ON SITE.
 - VTAC LOUVER GRILLES PREFINISHED TO MATCH SHERWIN WILLIAMS SW-7051 ANALYTICAL GRAY

WOOLPERT
ARCHITECTURE [ENGINEERING] GEOSPATIAL

375 Northridge Road
Suite 300
Atlanta, GA 30350
770.391.4095
FAX: 770.391.4104

CONTACT:
Kristen Eudy, RA
(678) 537-8938



WATERWALK

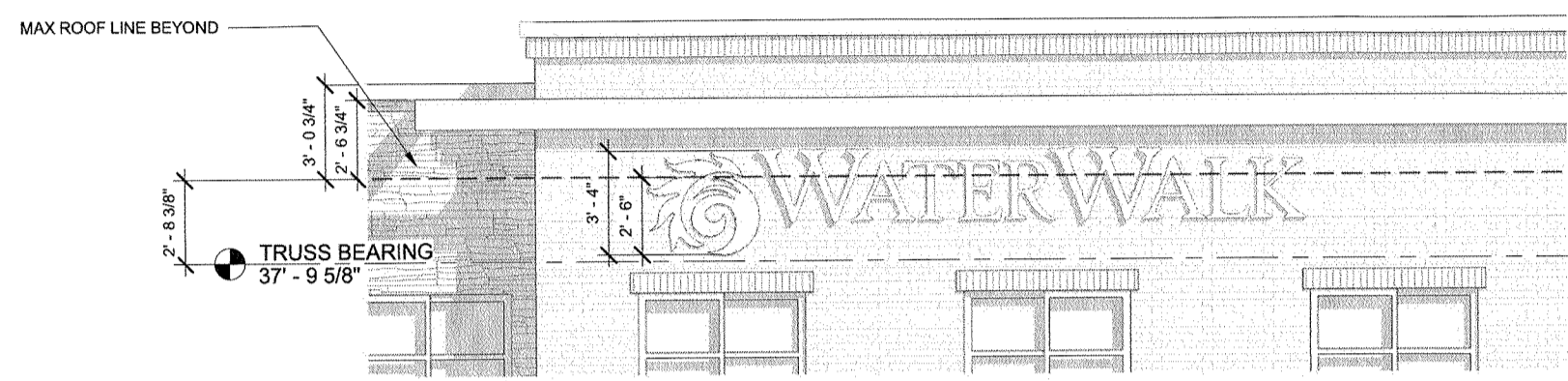
Morrisville WaterWalk
153 Units
1012 LOWER SHILOH WAY, MORRISVILLE, NC 27560
1016 LOWER SHILOH WAY, MORRISVILLE, NC 27560

Revisions:

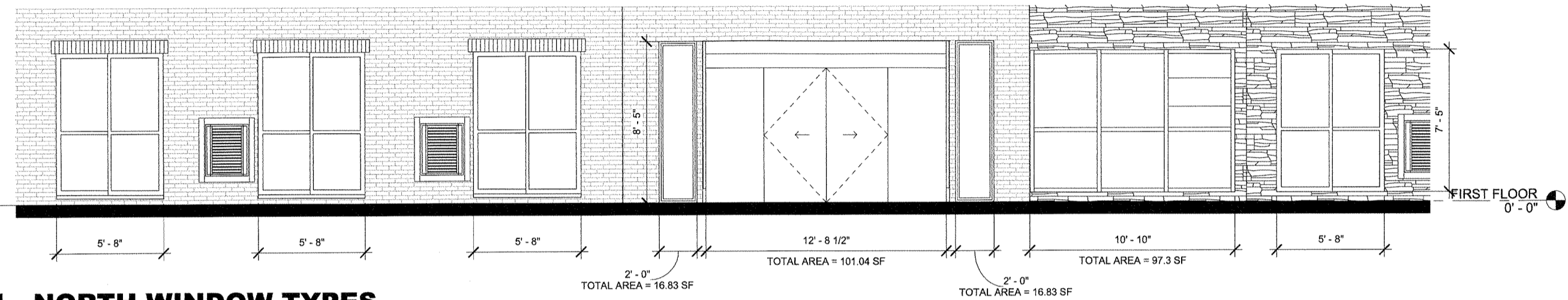
Proj. No.: 077730
Date: 01/18/2018
Drawn By: JY
Checked By: KE

Sheet Name:
WINDOW TYPES & DETAILS

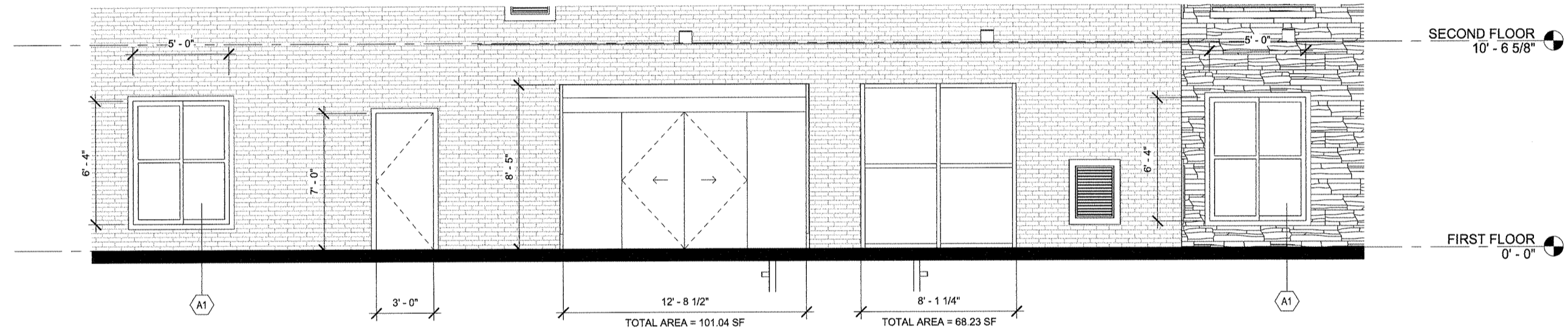
NOTE:
FASCIA SIGNS REQUIRE SEPARATE APPROVAL. ANY
SIGNS PROPOSED ARE FOR ILLUSTRATIVE PURPOSES ONLY



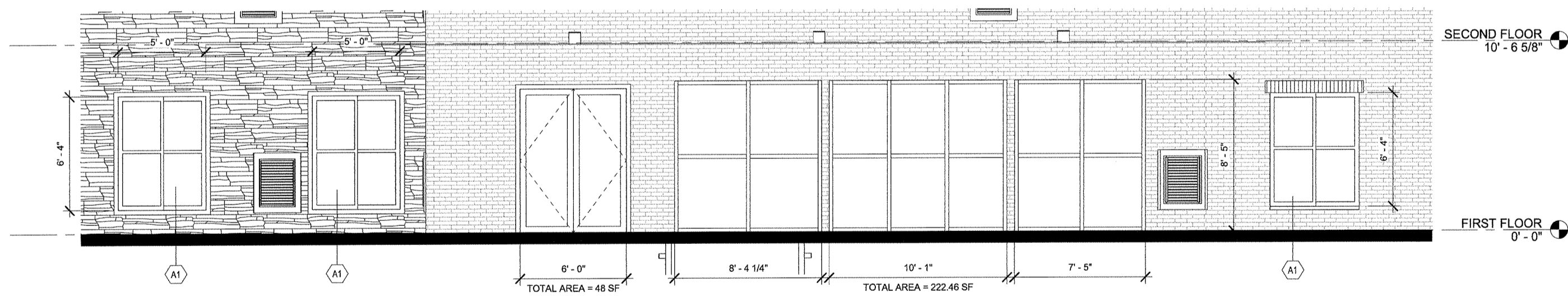
7 ENLARGED SIGNAGE DETAIL
SCALE: 1/4" = 1'-0"



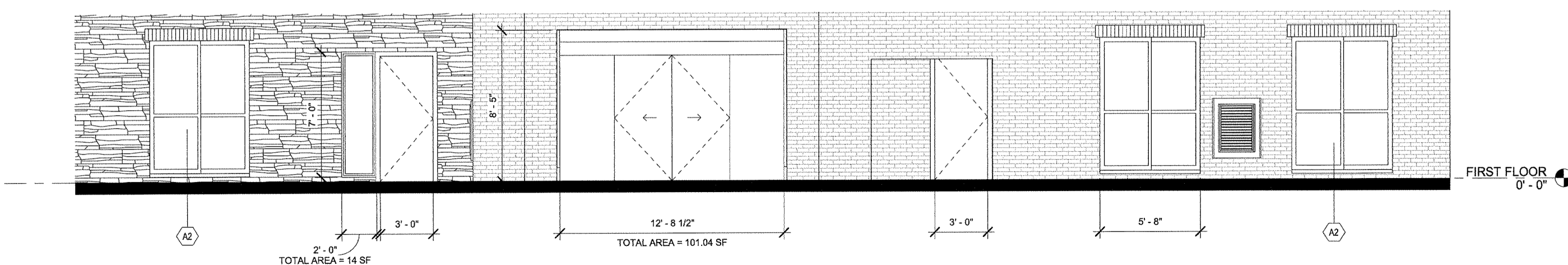
4 BLG#1 - NORTH WINDOW TYPES
SCALE: 1/4" = 1'-0"



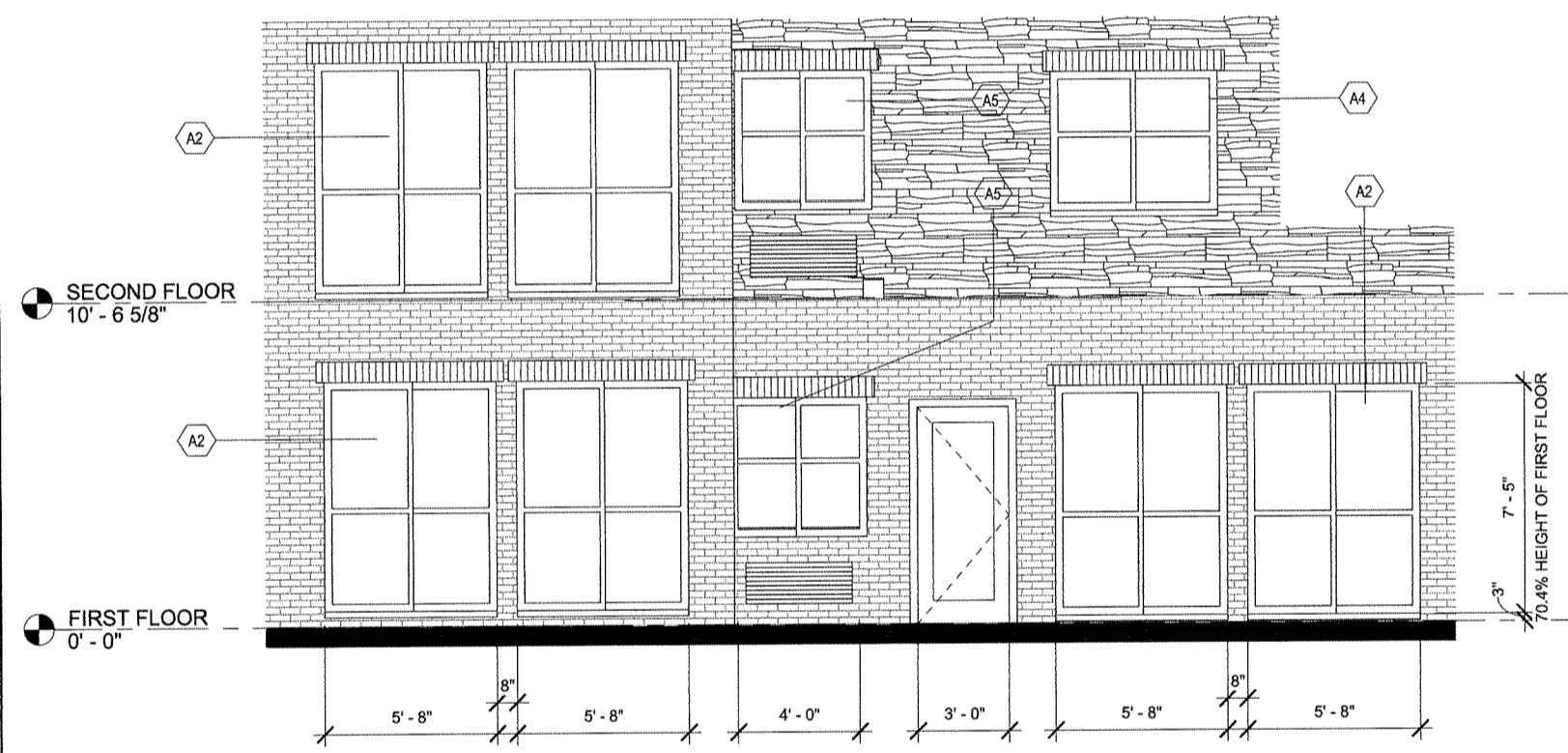
3 BLD#1 - SOUTH WINDOW TYPES
SCALE: 1/4" = 1'-0"



2 BLD#2 - NORTH WINDOW TYPES
SCALE: 1/4" = 1'-0"

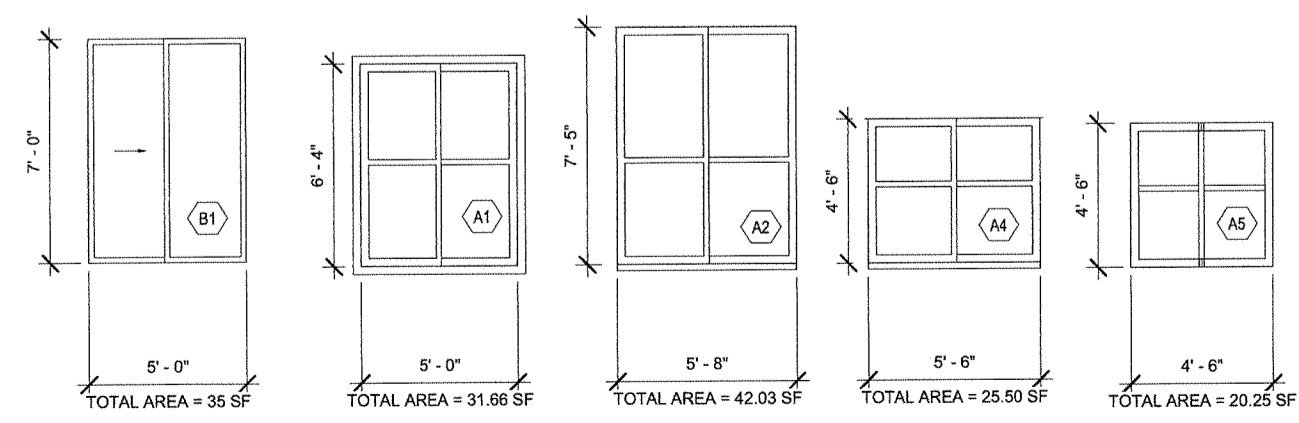


1 BLG#2 - SOUTH WINDOW TYPES
SCALE: 1/4" = 1'-0"



6 BLG#1 & BLG#2 - WEST WINDOW TYPES
SCALE: 1/4" = 1'-0"

SLIDING GLASS DOOR B1 - TYPICAL UPPER FLOOR BALCONIES
WINDOW TYPE A1 - TYPICAL GROUND FLOOR BLD#1 SOUTH AND BLD#2 NORTH
WINDOW TYPE A2 - TYPICAL GROUND FLOOR BLD#1 NORTH, EAST, WEST AND BLD#2 SOUTH, EAST, WEST
WINDOW TYPE A4 - TYPICAL UPPER FLOORS
WINDOW TYPE A5 - TYPICAL UPPER FLOOR CORRIDORS - EAST AND WEST



5 TYPICAL DOOR & WINDOW TYPES
SCALE: 1/4" = 1'-0"