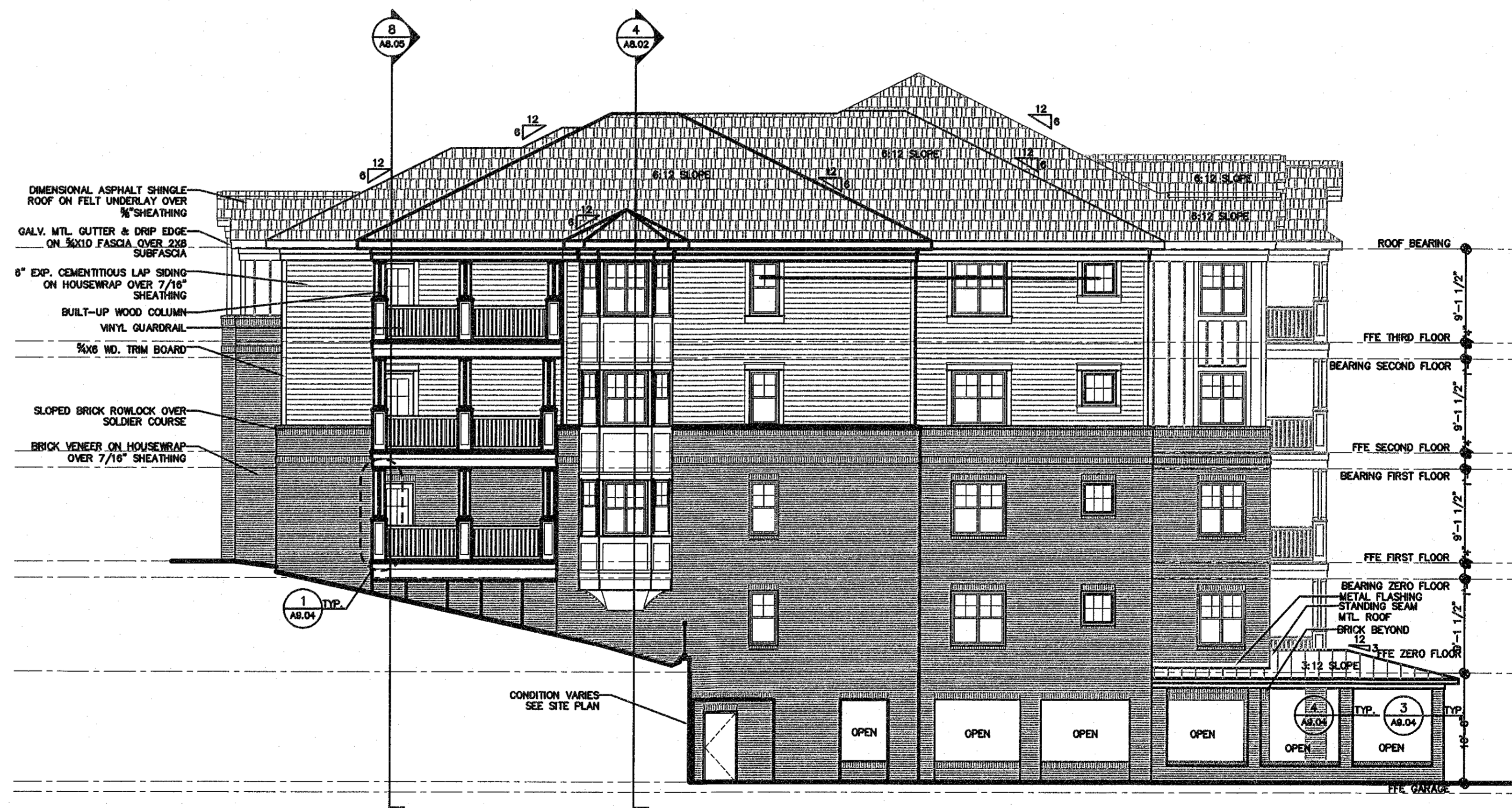


PA:\Projects\15041\_Bldg\15041\_Bldg.dwg (Director\Sheela\15041-15041.dwg)



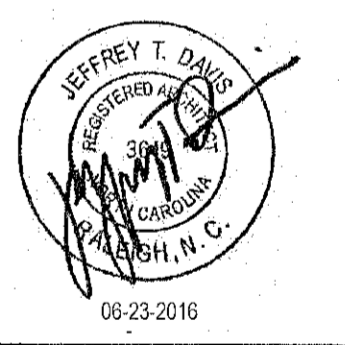
Cary Project Number 16-SP-024  
 Cary HTE Number 16-1162  
 Approved by the Town of  
 Cary Development Review  
 Committee  
 Planner *[Signature]* Date 8/03/2016

**EAST SIDE ELEVATION**  
 SCALE: 1/8" = 1'-0"

©2016 J.DAVIS ARCHITECTS EXPRESSLY RESERVES ITS COMMON LAW COPYRIGHT AND OTHER PROPERTY RIGHTS IN THESE PLANS. THESE PLANS ARE NOT TO BE REPRODUCED, CHANGED OR COPIED IN ANY FORM OR MANNER WHATSOEVER, NOR ARE THEY TO BE ASSIGNED TO ANY THIRD PARTY WITHOUT FIRST OBTAINING THE EXPRESSED WRITTEN PERMISSION AND CONSENT OF J.DAVIS ARCHITECTS, PLLC

**J DAVIS >**  
 510 Glenwood Ave. Suite 201 | Raleigh, NC 27603 | tel 919.855.1500  
 1518 Walnut St. Suite 100 | Philadelphia, PA 19102 | tel 215.546.0121  
**16-SP-024 (HTE#: 16-1162)**

Concordia Building Company  
**Nantucket Condominiums**  
 700 & 1000 Waterford Lake Drive Cary, NC



PROJECT:	05115	DATE	04-06-2016
ISSUE:			
REVISIONS:	△ Town of Cary Comments	08-23-2016	

DRAWN BY: TBC  
 CHECKED BY:  
 CONTENT: BUILDING ELEVATIONS

**A3.03**