

PLANTING NOTES

- 1) DRAINAGE: THE INSTALLER SHALL VISIT THE SITE OF THE HOME TO FULLY ASSESS THE DRAINAGE CONDITIONS AND TO VERIFY THE PERFORMANCE OF THE HOME. BY SIGNING OFF ON THE CONTRACT, THE HOMEOWNER CERTIFIES THAT THE HOME IS IN COMPLIANCE WITH THE REQUIREMENTS AND NO ADDITIONAL CORRECTIONS ARE NEEDED. FROM ANY VIOLATION OF THE CONTRACT WILL BE CONSIDERED AS ACCEPTANCE OF THE HOME.
- 2) NOTES ON DRAWINGS: THE INSTALLER IS RESPONSIBLE FOR NOTES ON THE DRAWINGS WHICH MAY CALL ATTENTION TO PARTICULAR REQUIREMENTS OR CONDITIONS WHICH MAY NOT BE CALLED OUT IN THE SPECIFICATIONS.
- 3) UTILITIES: THE EXACT LOCATION OF EXISTING UTILITIES, STRUCTURES AND UNDERGROUND UTILITIES, WHICH MAY NOT BE INDICATED ON DRAWINGS, SHALL BE FIELD VERIFIED BY THE INSTALLER AND HE SHALL CONTACT HIS AGENT AS TO PREVENT INTERFERENCE OF SERVICE OR DAMAGE. ANY DAMAGE SHALL BE REPAIRED TO ITS ORIGINAL CONDITION AT THE EXPENSE OF THE INSTALLER.
- 4) PLANT MATERIALS: ALL PLANTS AND PLANTING PROCEDURES SHALL CONFORM TO THE APPLICABLE STANDARDS OF THE A.S.A. STANDARDS AS SET FORTH IN "APPLICABLE STANDARDS FOR NURSERY STOCK" AND AS LATEST EDITION. PLANT MATERIALS SHALL HAVE BEEN GROWN UNDER CULTIVATED CONDITIONS SUITABLE TO THE LOCALITY OF THE PROJECT. ALL TREES AND SHRUBS SHALL BE FULLY BRANCHED PLANTS WHICH ARE CHARACTERISTIC OF THE SPECIES. QUANTITIES INDICATED ON THE DRAWINGS TAKE PRECEDENCE OVER QUANTITIES INDICATED IN THE SPECIFICATIONS. PLANTS WHICH ARE NOT SPECIALLY IDENTIFIED BY NAME, SHALL BE PLANTED INTO LEAF OR HAVING TENDER GROWTH, SHALL BE SPRAYED WITH AN ANTI-DESICCANT AT THE GROWTH PRIOR TO DIGGING. ALSO REFER TO WEBSITE SPECIFICATIONS.
- 5) INSTALLATION: INSTALL IN ACCORDANCE WITH SPECIFICATIONS AND PLANTING DETAILS. AFTER PLACEMENT OF MATERIALS, CONSTRUCT AN EARLY BUFFER AROUND THE PLANT AND FILL WITH WATER. ALL PLANTING AREAS ARE TO BE PLANTED WITH A SHREDED HARDWOOD BARK MULCH TO A MINIMUM COMPACTED COVER OF 4 INCHES DEEP.
- 6) ALL UNGRAZED AREAS ARE TO RECEIVE FOUR INCHES OF TOP SOIL, SEED, MULCH AND WATERED UNTIL A HEALTHY STAND OF GRASS IS ESTABLISHED.
- 7) INSTALLER SHALL MAKE HIS BID ON THE PLANTING SHOWN ON THE DRAWINGS, NOT ON QUANTITIES SHOWN ON THE PLANT LIST.

PLANT LIST

SYMBOL	QUAN.	BOTANICAL NAME	COMMON NAME	CAL.	SPREAD	HT.	ROOT	REMARKS
TREES								
Agp	14	<i>Acer glabrum</i>	Amur Maple	1 1/2" - 2"	6'-7'	6'-7'	B 4 B	
Ar	132	<i>Acer rubrum</i> 'Red Sunset'	Red Maple	2 1/2"	12' - 14'	12' - 14'	B 4 B	
Cc	37	<i>Cornus canadensis</i> 'Forest Pansy'	Forest Pansy Dogwood	1 1/2"	5' - 6'	5' - 6'	B 4 B	
Ck	24	<i>Cornus lasca</i>	Kousa Dogwood	1 1/2"	5' - 6'	5' - 6'	B 4 B	
Cj	28	<i>Cryptomeria japonica</i>	Cryptomeria	3' - 4'	6' - 7'	6' - 7'	B 4 B	
leaf	110	<i>Ilex x attenuata</i> 'Toston'	Foster Holly	3' - 4'	6' - 7'	6' - 7'	B 4 B	
lsg	61	<i>Ilex x attenuata</i> 'Savannah'	Savannah Holly	3' - 4'	6' - 7'	6' - 7'	B 4 B	
lji	21	<i>Ligustrum lucidum</i> 'Luscious'	Crab Apple	2"	8' - 10'	8' - 10'	B 4 B	3 trunk minimum
Mg	28	<i>Magnolia grandiflora</i>	Southern Magnolia	2 1/2"	12' - 12'	12' - 12'	B 4 B	
Oa	121	<i>Ostrya virginiana</i>	Sourwood	2"	12' - 14'	12' - 14'	B 4 B	
Pxa	13	<i>Platanus x acerifolia</i>	London Plane Tree	2 1/2"	12' - 14'	12' - 14'	B 4 B	
Py	44	<i>Prunus yedoensis</i>	Yoshino Cherry	2"	8' - 10'	8' - 10'	B 4 B	
Qa	41	<i>Quercus acutissima</i>	Sawtooth Oak	2 1/2"	12' - 14'	12' - 14'	B 4 B	

SYMBOL	QUAN.	BOTANICAL NAME	COMMON NAME	CAL.	SPREAD	HT.	ROOT	REMARKS
SHRUBS								
Ag	307	<i>Abelia grandiflora</i>	Abelia	2 1/2" - 3"	2' - 3'	3 gal.		
Agag	424	<i>Abelia grandiflora</i> 'Edward Goucher'	Edward Goucher Abelia	2 1/2" - 3"	2' - 3'	3 gal.		
Ah	24	<i>Azalea hybrida</i> 'Eden'	Eden Azalea	2 1/2" - 3"	2' - 3'	3 gal.		variety 'Gibraltar'
Aj	68	<i>Azalea japonica</i>	Azalea	2 1/2" - 3"	2' - 3'	3 gal.		
Cl	42	<i>Claytonia virginica</i>	Claytonia	2 1/2" - 3"	2' - 3'	3 gal.		
lcn	515	<i>Ilex cornuta</i> 'Burfordiana'	Dwarf Burford Holly	2 1/2" - 3"	2' - 3'	3 gal.		
lcs	48	<i>Ilex cornuta</i> 'Carroll'	Carroll Holly	2 1/2" - 3"	2' - 3'	3 gal.		
lcn	484	<i>Ilex vomitoria</i> 'nana'	Dwarf Yaupon Holly	2 1/2" - 3"	2' - 3'	3 gal.		
Jf	51	<i>Jasminum floridanum</i>	Florida Jasmine	2 1/2" - 3"	2' - 3'	3 gal.		
Lm	24	<i>Liriodendron tulipifera</i>	Liriodendron	2 1/2" - 3"	2' - 3'	3 gal.		
Nd	246	<i>Nandina domestica</i>	Nandina	2 1/2" - 3"	2' - 3'	3 gal.		
Pi	66	<i>Prunus laurocerasus</i> 'Otto Luyken'	Otto Laurel	2 1/2" - 3"	2' - 3'	3 gal.		

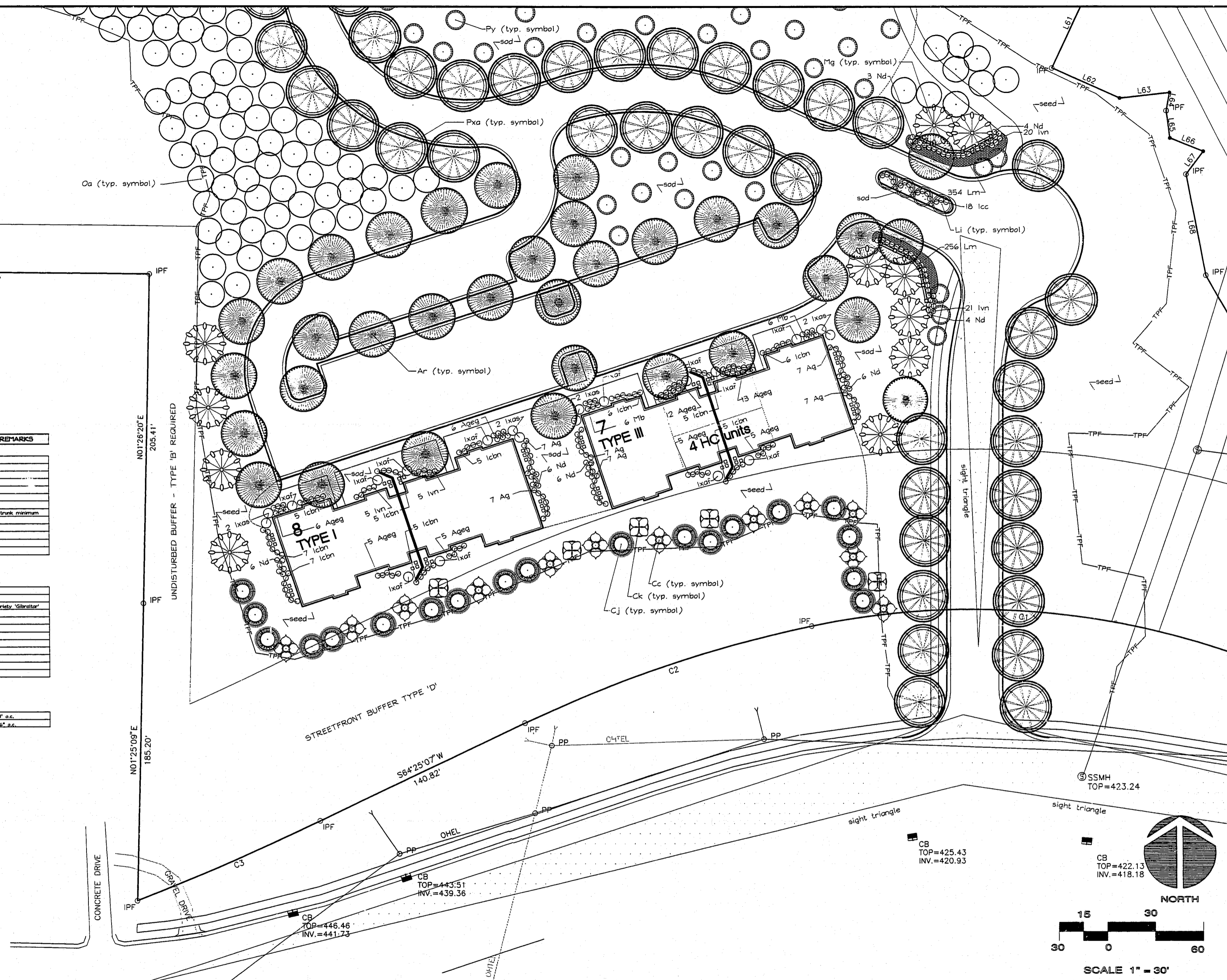
GROUNDCOVERS

SYMBOL	QUAN.	BOTANICAL NAME	COMMON NAME	CAL.	SPREAD	HT.	ROOT	REMARKS
Lm	1756	<i>Liriope muscari</i> 'Big Blue'	Liriope	1"	1'	1 gal.		1' o.s.
Oj	5292	<i>Ophiopogon japonicus</i>	Florida Grass	3" - 4"	3" - 4"	2 1/4" pot.		6" o.s.

SEEDBED PREPARATION

1. Chisel compacted areas and spread topsoil 3 inches deep over adverse soil conditions, if available.
2. Rip the entire area to 6 inches depth.
3. Remove all loose rock, roots, and other obstructions leaving surface reasonably smooth and uniform.
4. Apply agricultural lime, fertilizer, and superphosphate uniformly and mix with soil (see below*).
5. Continue tillage until a well-pulverized, firm, reasonably uniform seedbed is prepared 4 to 6 inches deep.
6. Seed on a freshly prepared seedbed and cover seed lightly with seeding equipment or cultipack after seeding.
7. Mulch immediately after seeding and anchor mulch.
8. Inspect all seeded areas and make necessary repairs or reseeds within the planting season, if possible. If stand should be over 60% damaged reestablish following original lime, fertilizer and seeding rates.
9. Consult Conservation Inspector on maintenance treatment and fertilization after permanent cover is established.

* Apply: Agricultural Limestone - 2 tons/acre or 3 tons/acre in clay soils
 Fertilizer - 1000 lbs/acre (10-10-10)
 Superphosphate - 500 lbs/acre (20%)
 Mulch - 2 tons/acre (small grain straw)
 Anchor - asphalt emulsion at 450 gal./acre



CONSTRUCTION DRAWINGS

REV#	DESCRIPTION	DATE

DESIGNED	TCC
DRAWN	TCC
CHECKED	
PROJ. ENGR.	

MCKIM & CREED
 ENGINEERS • PLANNERS • SURVEYORS
 WILMINGTON, NORTH CAROLINA RALEIGH, NORTH CAROLINA
 SMITHFIELD, NORTH CAROLINA

WATERFORD FOREST APARTMENTS
 CARY, NC

PLANTING

DATE: 24 FEB 98
 M&C PROJ. #0976-0007
 DWG FILE #608F401

SCALE: HORIZONTAL: 1"=30'
 VERTICAL: 1"=30'

SHEET NO. **22**
 OF 27