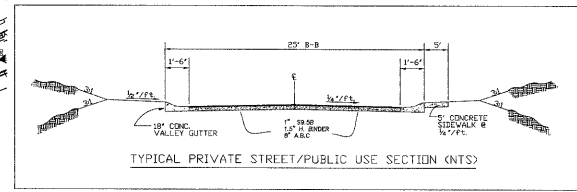
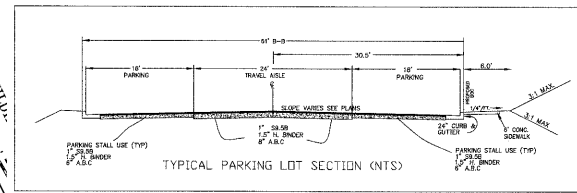


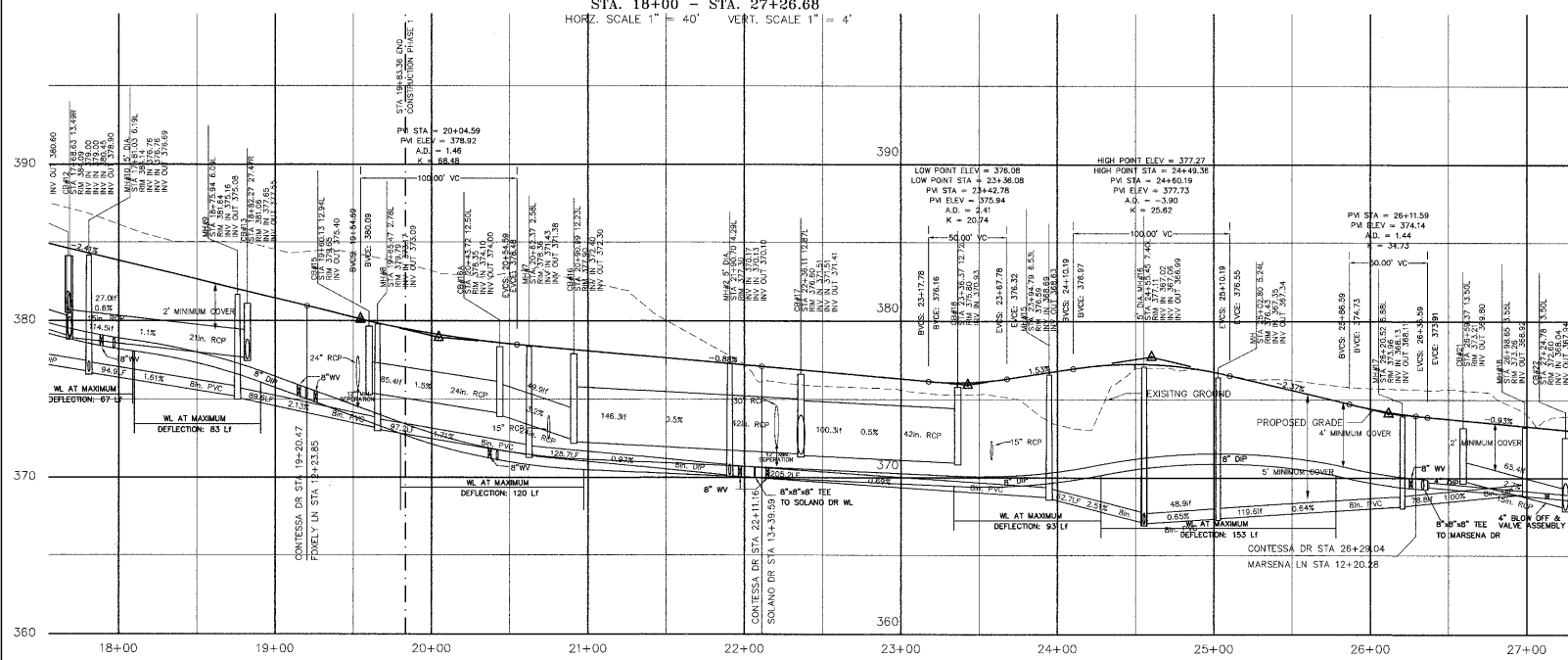


CONTESSA DRIVE (PRIVATE)
 STA. 18+00 - STA. 27+26.68
 SCALE 1" = 40'

CURVE TABLE			
CURVE	LENGTH	BETA	CHORD
CL 01	157.73	418.30	21544.56
CL 02	274.92	120.01	120053.24
CL 03	202.59	107.91	107914.24
CL 04	36.67	418.30	21544.56
CL 05	172.71	187.58	187581.17
CL 06	34.86	212.30	14744.39
CL 07	11.04	212.30	14744.39
CL 08	89.58	120.01	120053.24
CL 09	85.53	200.50	24474.78
CL 10	11.04	137.38	13476.98
CL 11	51.83	137.38	13476.98
CL 12	71.78	137.38	13476.98
CL 13	14.45	102.59	102591.31
CL 14	95.72	112.33	112331.57
CL 15	31.38	200.01	200011.77



CONTESSA DRIVE (PRIVATE)
 STA. 18+00 - STA. 27+26.68
 HORZ. SCALE 1" = 40' VERT. SCALE 1" = 4'



GENERAL CONSTRUCTION NOTES

1. ALL DIMENSIONS SHOWN ARE TO THE BACK OF CURB UNLESS OTHERWISE INDICATED ON THE PLANS CONTACT THE TOWN FOR A LISTING OF COORDINATES FOR ALL PARKING LOTS AND BUILDING CORNERS.
2. ALL CURB AND OUTER SHOWN WITHIN THE SITE IS STANDARD 18" 30" METRIC RIBBLE OF CONC.
3. CURBING ALONG FIRE LINES SHALL BE PAINTED YELLOW AND MARKED ACCORDINGLY. MARKS TO BE PAINTED AS SOON AS POSSIBLE AFTER COMPLETION OF THE PROPOSED IMPROVEMENTS.
4. ALL CONSTRUCTION SHALL BE IN ACCORDANCE WITH CURRENT TOWN OF CARY STANDARD SPECIFICATIONS AND DETAILS.
5. ALL UTILITY LOCATIONS SHALL BE OBTAINED TO PREVENT OFF-SITE DAMAGE.
6. WATER AND SEWER DEVELOPMENT FEES ARE DUE PRIOR TO ISSUANCE OF BUILDING PERMITS.
7. IT IS THE RESPONSIBILITY OF THE OWNER/ENGINEER TO OBTAIN THE FOLLOWING PERMITS FROM CARY, N.C.:
 - a. DRAINAGE PERMIT
 - b. WATER AND SEWER CONNECTION PERMIT
 - c. CONSTRUCTION PERMIT
 - d. ENVIRONMENTAL PERMIT
8. ALL CONSTRUCTION SHALL BE IN ACCORDANCE WITH THE TOWN OF CARY'S CONSTRUCTION PERMITS AND SPECIFICATIONS.
9. ALL CONSTRUCTION SHALL BE IN ACCORDANCE WITH THE TOWN OF CARY'S CONSTRUCTION PERMITS AND SPECIFICATIONS.
10. ALL CONSTRUCTION SHALL BE IN ACCORDANCE WITH THE TOWN OF CARY'S CONSTRUCTION PERMITS AND SPECIFICATIONS.
11. ALL CONSTRUCTION SHALL BE IN ACCORDANCE WITH THE TOWN OF CARY'S CONSTRUCTION PERMITS AND SPECIFICATIONS.
12. ALL CONSTRUCTION SHALL BE IN ACCORDANCE WITH THE TOWN OF CARY'S CONSTRUCTION PERMITS AND SPECIFICATIONS.
13. ALL CONSTRUCTION SHALL BE IN ACCORDANCE WITH THE TOWN OF CARY'S CONSTRUCTION PERMITS AND SPECIFICATIONS.
14. ALL CONSTRUCTION SHALL BE IN ACCORDANCE WITH THE TOWN OF CARY'S CONSTRUCTION PERMITS AND SPECIFICATIONS.
15. ALL CONSTRUCTION SHALL BE IN ACCORDANCE WITH THE TOWN OF CARY'S CONSTRUCTION PERMITS AND SPECIFICATIONS.
16. ALL CONSTRUCTION SHALL BE IN ACCORDANCE WITH THE TOWN OF CARY'S CONSTRUCTION PERMITS AND SPECIFICATIONS.
17. ALL CONSTRUCTION SHALL BE IN ACCORDANCE WITH THE TOWN OF CARY'S CONSTRUCTION PERMITS AND SPECIFICATIONS.
18. ALL CONSTRUCTION SHALL BE IN ACCORDANCE WITH THE TOWN OF CARY'S CONSTRUCTION PERMITS AND SPECIFICATIONS.
19. ALL CONSTRUCTION SHALL BE IN ACCORDANCE WITH THE TOWN OF CARY'S CONSTRUCTION PERMITS AND SPECIFICATIONS.
20. ALL CONSTRUCTION SHALL BE IN ACCORDANCE WITH THE TOWN OF CARY'S CONSTRUCTION PERMITS AND SPECIFICATIONS.
21. ALL CONSTRUCTION SHALL BE IN ACCORDANCE WITH THE TOWN OF CARY'S CONSTRUCTION PERMITS AND SPECIFICATIONS.
22. ALL CONSTRUCTION SHALL BE IN ACCORDANCE WITH THE TOWN OF CARY'S CONSTRUCTION PERMITS AND SPECIFICATIONS.
23. ALL CONSTRUCTION SHALL BE IN ACCORDANCE WITH THE TOWN OF CARY'S CONSTRUCTION PERMITS AND SPECIFICATIONS.
24. ALL CONSTRUCTION SHALL BE IN ACCORDANCE WITH THE TOWN OF CARY'S CONSTRUCTION PERMITS AND SPECIFICATIONS.
25. ALL CONSTRUCTION SHALL BE IN ACCORDANCE WITH THE TOWN OF CARY'S CONSTRUCTION PERMITS AND SPECIFICATIONS.
26. ALL CONSTRUCTION SHALL BE IN ACCORDANCE WITH THE TOWN OF CARY'S CONSTRUCTION PERMITS AND SPECIFICATIONS.
27. ALL CONSTRUCTION SHALL BE IN ACCORDANCE WITH THE TOWN OF CARY'S CONSTRUCTION PERMITS AND SPECIFICATIONS.
28. ALL CONSTRUCTION SHALL BE IN ACCORDANCE WITH THE TOWN OF CARY'S CONSTRUCTION PERMITS AND SPECIFICATIONS.
29. ALL CONSTRUCTION SHALL BE IN ACCORDANCE WITH THE TOWN OF CARY'S CONSTRUCTION PERMITS AND SPECIFICATIONS.
30. ALL CONSTRUCTION SHALL BE IN ACCORDANCE WITH THE TOWN OF CARY'S CONSTRUCTION PERMITS AND SPECIFICATIONS.

UTILITY SPECIFICATIONS

1. WATER & SEWER MAINS
2. 18" MINIMUM COVER
3. SEPARATE CIRCLES WITH 18" MIN VERTICAL SEPARATION
4. 24" MINIMUM COVER
5. 12" MIN VERTICAL SEPARATION
6. 18" MIN COVER OVER WATER MAINS - 12" MIN VERTICAL SEPARATION
7. 18" MIN COVER OVER SEWER MAINS - 12" MIN VERTICAL SEPARATION
8. 18" MIN COVER OVER WATER MAINS - 12" MIN VERTICAL SEPARATION
9. 18" MIN COVER OVER SEWER MAINS - 12" MIN VERTICAL SEPARATION
10. 18" MIN COVER OVER WATER MAINS - 12" MIN VERTICAL SEPARATION
11. 18" MIN COVER OVER SEWER MAINS - 12" MIN VERTICAL SEPARATION
12. 18" MIN COVER OVER WATER MAINS - 12" MIN VERTICAL SEPARATION
13. 18" MIN COVER OVER SEWER MAINS - 12" MIN VERTICAL SEPARATION
14. 18" MIN COVER OVER WATER MAINS - 12" MIN VERTICAL SEPARATION
15. 18" MIN COVER OVER SEWER MAINS - 12" MIN VERTICAL SEPARATION
16. 18" MIN COVER OVER WATER MAINS - 12" MIN VERTICAL SEPARATION
17. 18" MIN COVER OVER SEWER MAINS - 12" MIN VERTICAL SEPARATION
18. 18" MIN COVER OVER WATER MAINS - 12" MIN VERTICAL SEPARATION
19. 18" MIN COVER OVER SEWER MAINS - 12" MIN VERTICAL SEPARATION
20. 18" MIN COVER OVER WATER MAINS - 12" MIN VERTICAL SEPARATION
21. 18" MIN COVER OVER SEWER MAINS - 12" MIN VERTICAL SEPARATION
22. 18" MIN COVER OVER WATER MAINS - 12" MIN VERTICAL SEPARATION
23. 18" MIN COVER OVER SEWER MAINS - 12" MIN VERTICAL SEPARATION
24. 18" MIN COVER OVER WATER MAINS - 12" MIN VERTICAL SEPARATION
25. 18" MIN COVER OVER SEWER MAINS - 12" MIN VERTICAL SEPARATION
26. 18" MIN COVER OVER WATER MAINS - 12" MIN VERTICAL SEPARATION
27. 18" MIN COVER OVER SEWER MAINS - 12" MIN VERTICAL SEPARATION
28. 18" MIN COVER OVER WATER MAINS - 12" MIN VERTICAL SEPARATION
29. 18" MIN COVER OVER SEWER MAINS - 12" MIN VERTICAL SEPARATION
30. 18" MIN COVER OVER WATER MAINS - 12" MIN VERTICAL SEPARATION

06-SPE-01-A
 APPROVED
 TOWN OF CARY

Approved by: *[Signature]* Date: 1/28/08
 Planning: *[Signature]* Date: 1/28/08
 Engineering: *[Signature]* Date: 3/24/08

GRAPHIC SCALE
 1 inch = 40 feet