



WEATHERFIELD INDUSTRIAL PARK LOT 1

LANDSCAPE PLAN

CLIENT:
 FIRST OAKLAND PROP.
 2601 WESTON PKWY.
 SUITE 201
 CARY, NC 27513
 (919) 678-0400

ENGINEER:
 JOHN A. EDWARDS & CO.
 333 WADE AVE.
 RALEIGH, NC 27605
 (919) 828-4428

SURVEYOR:
 JOHN A. EDWARDS & CO.
 333 WADE AVE.
 RALEIGH, NC 27605
 (919) 828-4428

Drawn By: BAOW
 Checked By: CRW
 Date: 3-27-00
 Proj#: 2003012

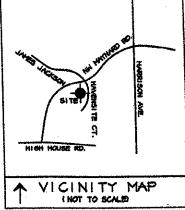
Revisions
 5-18-00: TOC REV-BOTH
 6-29-00: TOC REV-TK
 7-06-00: CLIENT REV

APPROVED
 TOWN OF CARY

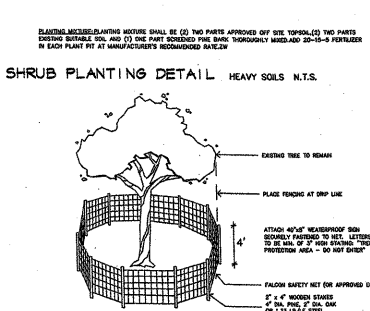
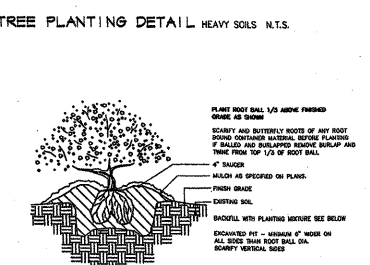
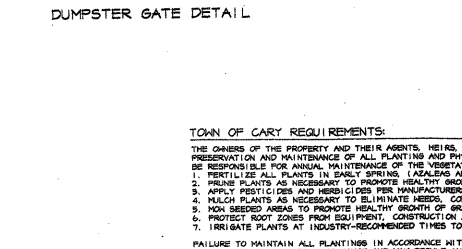
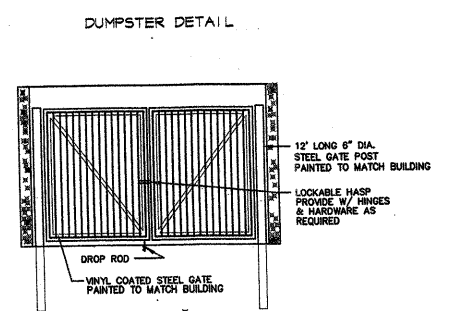
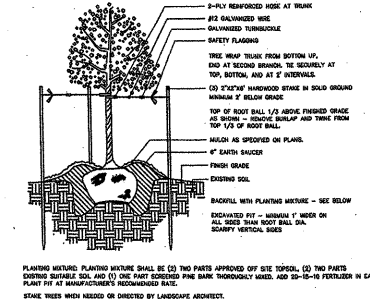
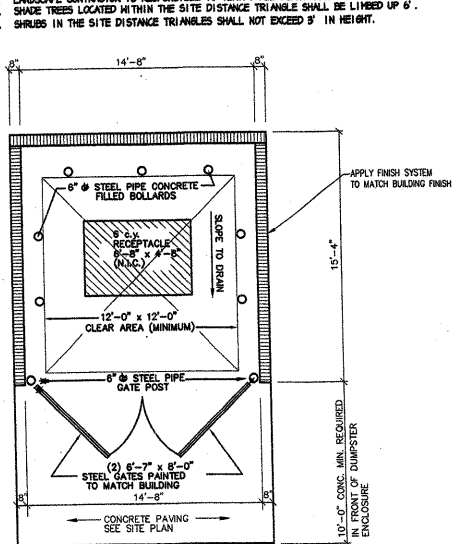
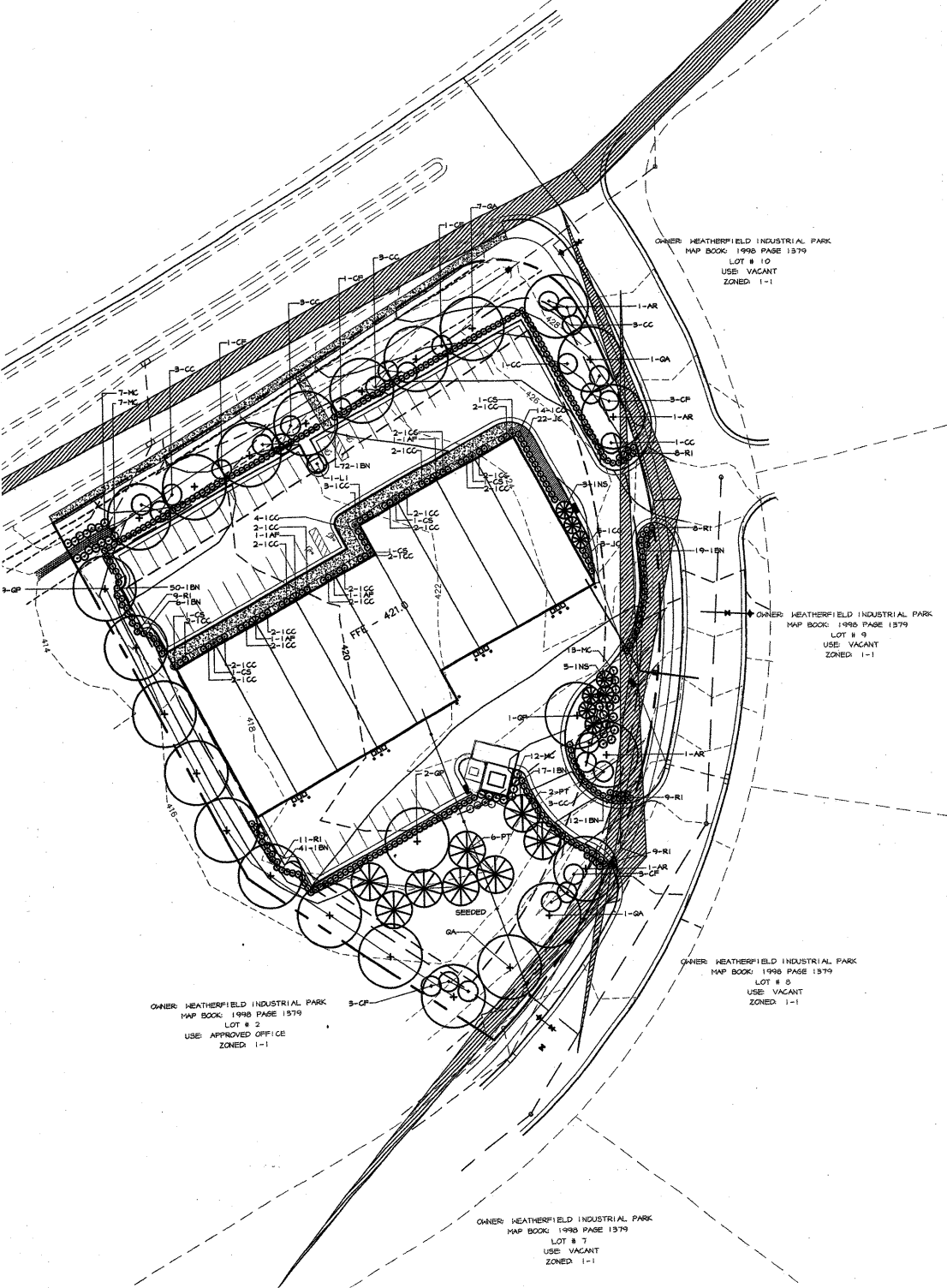
Approved by: [Signature] Date: 4/17/02
 Planning: [Signature] Date: 4/17/02
 Engineering: [Signature] Date: 4/17/02

AREA	PLANT	QUANTITY	SIZE	DATE	STATUS	REMARKS
AS	4 ACER RUBRUM	10-12" MIN.	B&B	AS SHOWN	FULL	
CC	17 CERCIS CANADENSIS	EASTERN REDBUD	2" CAL. MIN.	B&B	AS SHOWN	FULL
PF	12 CORNUS FLORIDA	WHITE FLOWERING DOGWOOD	2" CAL. MIN.	B&B	AS SHOWN	FULL
PF	8 PINUS TAEDA	LOBLOLLY PINE	2" CAL. MIN.	B&B	AS SHOWN	FULL
GA	9 QUERCUS AGUTTISIMA	BANTOOTH OAK	10-12" MIN.	B&B	AS SHOWN	FULL
GP	12 QUERCUS PHELLOS	WILLOW OAK	10-12" MIN.	B&B	AS SHOWN	FULL

shrub	PLANT	QUANTITY	SIZE	DATE	STATUS	REMARKS
CS	6 CAMELLIA SAGANQUA 'CLEOPATRA'	CAMELLIA	3'-6"	B&B	AS SHOWN	FULL
TAP	3 ILEX ATRENAVITA 'POSTERI'	POSTER HOLLY	3'-6"	B&B	AS SHOWN	FULL
IBN	211 ILEX BERGEDI 'VIVA'	DWARF BURFORD HOLY	24" MIN.	CONT.	9" O.C.	FULL
CC	60 ILEX CORNATA 'COMPACTA'	COMPACTA HOLLY	24" MIN.	CONT.	AS SHOWN	FULL
INS	6 ILEX X MELLEIE STEVENS	MELLEIE STEVENS HOLLY	3'-6" HT.	B&B	AS SHOWN	FULL
IC	25 JUNTHERA GIBBERNS	GIBBERT JUNIPER	12" MIN.	CONT.	AS SHOWN	FULL
MC	99 MYRTICA GERPERSA	MAX MYRTLE	24-36" MIN.	CONT.	4" O.C.	FULL
RI	54 RHAPHIOLEPIIS INDICA	WHITE INDIA HARTHORN	24" MIN.	CONT.	AS SHOWN	FULL



- NOTES:**
1. AREA TO REAR OF BUILDING SHALL BE SEEDED TO PREVENT EROSION UNTIL THE PINES ARE ESTABLISHED.
 2. LANDSCAPE CONTRACTOR IS RESPONSIBLE TO VERIFY ALL PLANT COUNTS.
 3. SHADE TREES LOCATED WITHIN THE SITE DISTANCE TRIANGLE SHALL BE LINED UP 6'.
 4. SHRUBS IN THE SITE DISTANCE TRIANGLES SHALL NOT EXCEED 9' IN HEIGHT.

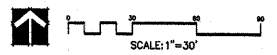


TOWN OF CARY REQUIREMENTS:

THE OWNERS OF THE PROPERTY AND THEIR AGENTS, HEIRS, OR ASSIGNS SHALL BE RESPONSIBLE FOR THE INSTALLATION, PRESERVATION AND MAINTENANCE OF ALL PLANTING AND PHYSICAL FEATURES SHOWN ON THIS PLAN. THE OWNERS SHALL BE RESPONSIBLE FOR ANNUAL MAINTENANCE OF THE VEGETATION TO INCLUDE BUT NOT BE LIMITED TO:

1. PRUNE ALL PLANTS IN EARLY SPRING (LATE FEBRUARY THROUGH APRIL), AFTER BLOOMING, BY APPROVED PROFESSIONAL APPROX.
2. APPLY FERTILIZERS AND HERBICIDES PER MANUFACTURERS RECOMMENDATIONS WHEN INDICATIONS OCCUR.
3. PRUNE PLANTS AS NECESSARY TO PROMOTE HEALTHY GROWTH AND UNIFORM APPEARANCE.
4. MULCH PLANTS AS NECESSARY TO ELIMINATE WEEDS, CONSERVE WATER, AND PROTECT PLANTS FROM HARSH CONDITIONS.
5. NOT REMOVE BRANCHES TO PROMOTE HEALTHY GROWTH OF GRASS SPECIES AND MAINTAIN CLEAR APPEARANCE OF PROPERTY.
6. PROTECT ROOT ZONES FROM EQUIPMENT, CONSTRUCTION AND RELATED MATERIALS, ETC.
7. IRRIGATE PLANTS AT INDUSTRY-RECOMMENDED TIMES TO ENSURE HEALTHY GROWTH AND CONSERVATION OF WATER.

FAILURE TO MAINTAIN ALL PLANTING IN ACCORDANCE WITH THIS PLAN MAY CONSTITUTE A VIOLATION OF THE UNIFIED DEVELOPMENT ORDINANCE AND MAY RESULT IN FINES.



03-SR-018
 APPROVED
 TOWN OF CARY