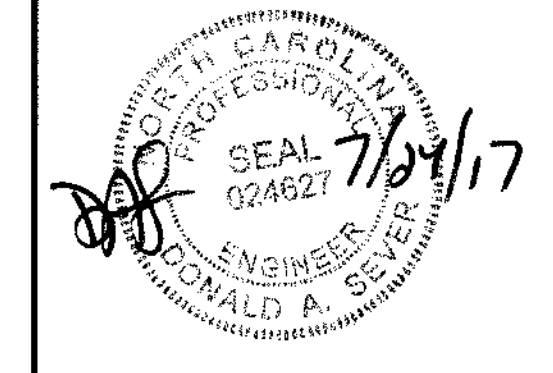


**Hugh J. Gilleece and Associates**  
 875 Walnut Street  
 Suite 360  
 Cary, NC 27511  
 BUSINESS LIC. # C-496  
 Phone: (919)469-1101

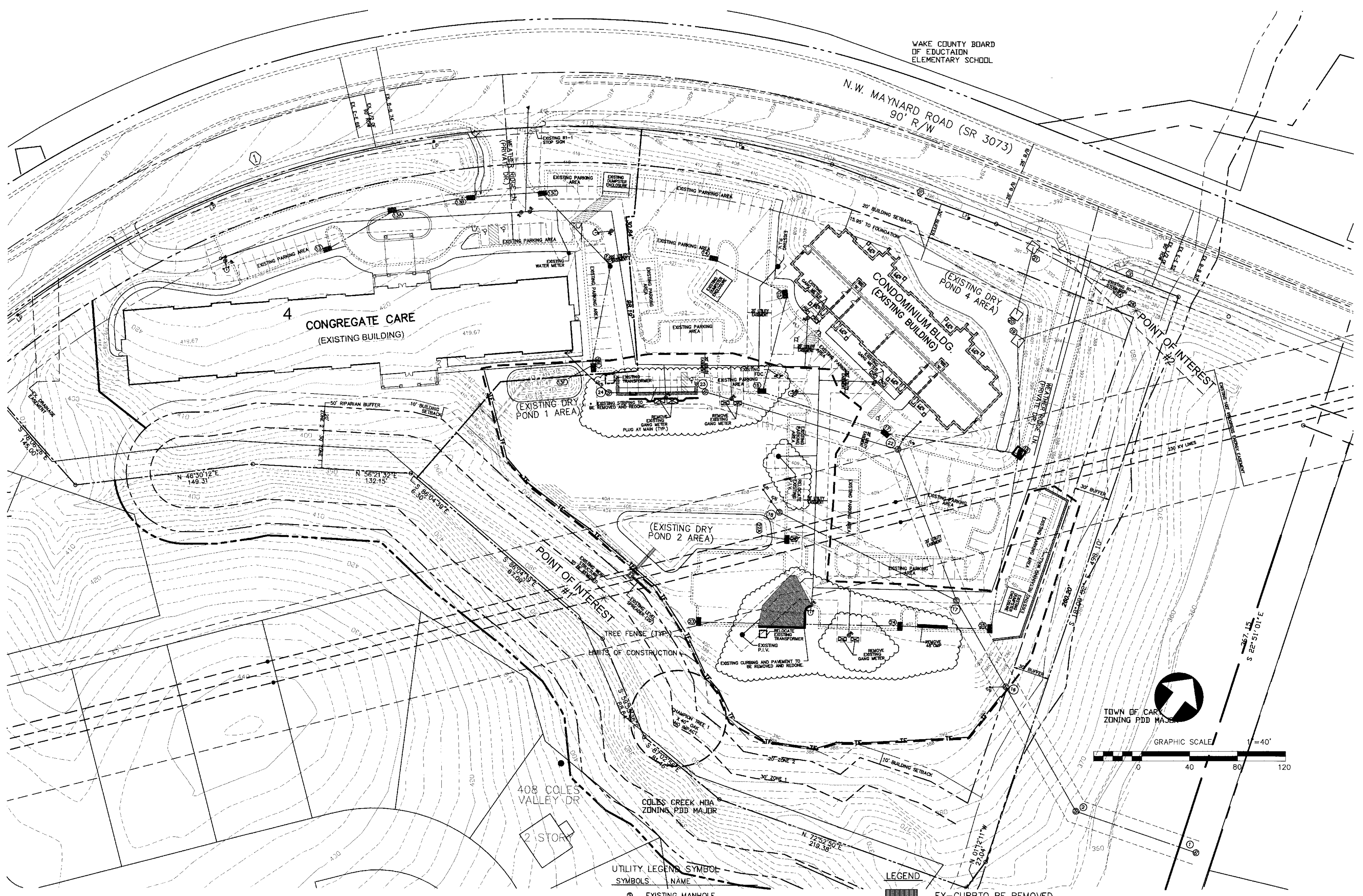
NO.	DATE	REVISION
1	7/27/17	REVISED PER TOC REVIEW 11/29/16
2	5/17/17	REVISED PER TOC REVIEW 3/26/17
4	7/24/17	FINAL SET



**EXISTING CONDITIONS / DEMOLITION PLAN**  
 FOR  
**WEATHERSTONE SPRINGS PH 2**  
 SITUATED AT  
**WEATHERIDGE LANE**  
**CARY**  
 WAKE COUNTY, NORTH CAROLINA

JOB #	5500.05
DSN/CHK BY:	DS
DWN BY:	BH
DATE:	10/13/16
HRZ SCALE:	1"=40'
VRT SCALE:	NONE

SHEET NO. **1**



**DATA**

LINE	DELTA/BEARING	RADIUS	LENGTH	TANGENT
①	45° 04' 00"	773.51	776.49	320.93
②	S 59° 55' 36" E		88.64	
③	N 86° 04' 47" W		211.48	

- UTILITY LEGEND SYMBOLS**
- |   |                                |
|---|--------------------------------|
| ⊙ | EXISTING MANHOLE               |
| ○ | EXISTING SEWER CLEANOUT        |
| ▣ | EXISTING FLARED END SECTION    |
| ■ | EXISTING CATCH BASIN           |
| ⊕ | EXISTING BLOW OFF ASSEMBLY     |
| ■ | EXISTING WATER SERVICE         |
| ■ | EXISTING GANG METER            |
| ⊕ | EXISTING FIRE HYDRANT          |
| ⊕ | EXISTING WATER VALVE           |
| ⊕ | EXISTING FIRE DEPT. CONNECTION |
| ● | EXISTING POST INDICATOR VALVE  |

- LEGEND**
- |     |                                 |
|-----|---------------------------------|
| ▨   | EX-CURB TO BE REMOVED           |
| ▨   | EXISTING PAVEMENT TO BE REMOVED |
| --- | EXISTING 30" CURB TO REMAIN     |
| --- | EXISTING WATER MAIN             |
| --- | EXISTING SEWER MAIN             |
| --- | EXISTING STORM DRAINAGE         |

**GENERAL NOTES:**  
 1. UTILITY AND DRAINAGE EASEMENTS ARE NOT SHOWN FOR CLARITY PLEASE SEE SHEET 2.  
 2. UTILITY AS-BUILTS PROVIDED BY AIKEN AND YELLE ASSOCIATES, PA.  
 3. CONTRACTOR IS RESPONSIBLE TO CALL IN UTILITY LOCATIONS PRIOR TO THE START OF CONSTRUCTION.

**APPROVED by the Town of Cary**  
 Development Review Committee

APP DEVEL  
 PLANNER

16-SP-081  
 17-0443  
 By: kahales  
 09/01/2017

Y  
 TEE