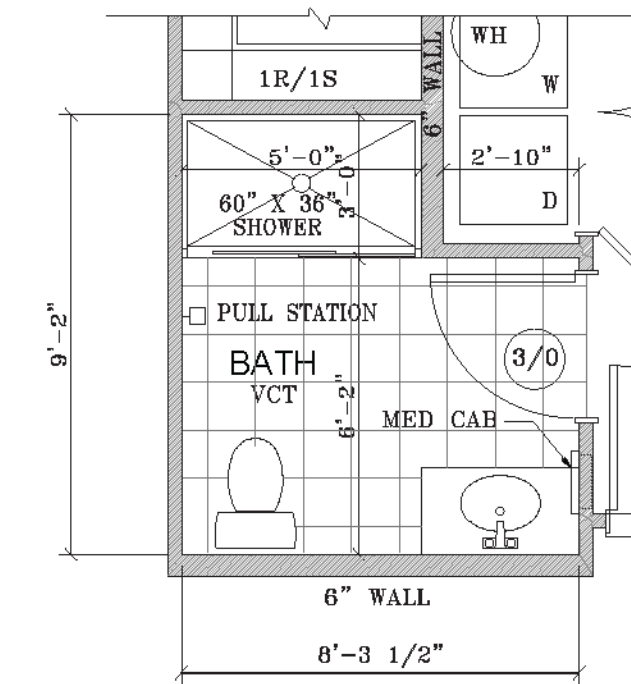
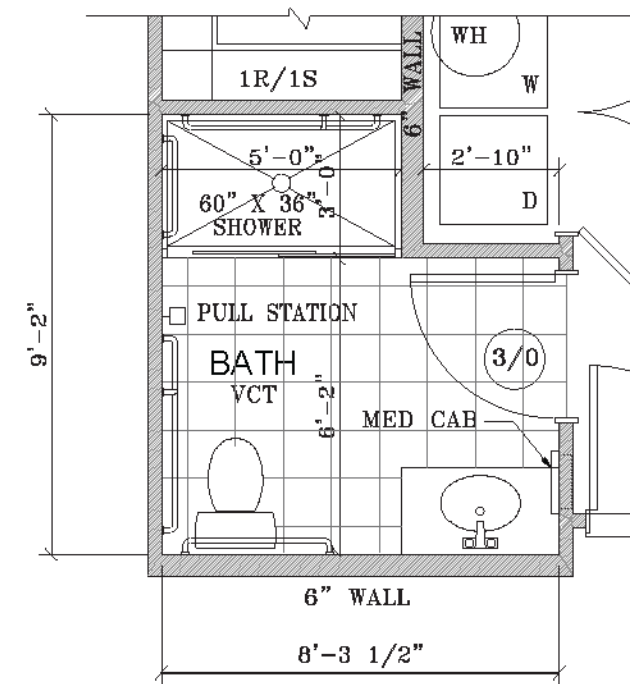
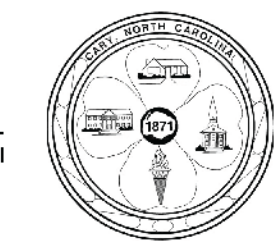


PRELIMINARY Not for Construction

- Notes:
1. All building permits to be consistent with the approved site plan. The Planning Department does not review building permit plan sets, so it is the developer's responsibility to ensure that elevations submitted in the building permit set match those approved during the site plan review process. If the elevations do not match those in the site plan, it will delay the issuance of a Certificate of Occupancy at the end of construction, and may necessitate modifications to the constructed building.
 2. All vent pipes, etc. extending above the roof surface must be painted a color that blends with the roof color.
 3. All rooftop mechanical equipment shall be screened from offsite views.

APPROVED by the Town of Cary
Development Review Committee

16-SP-081
17-0443
By: kahales
09/01/2017



2

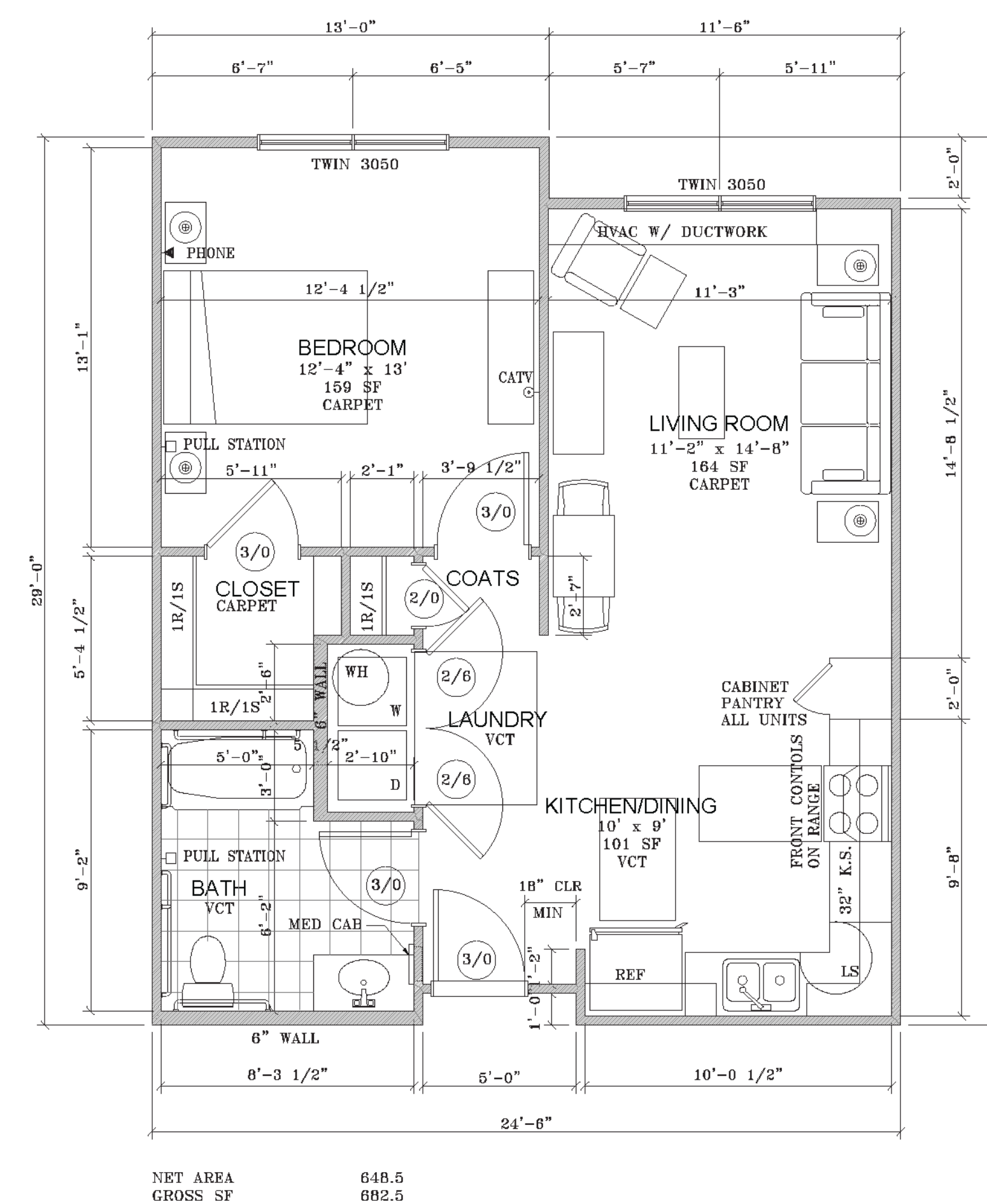
1-Bedroom Handicap with Optional Shower

SCALE: 1/4" = 1'-0"

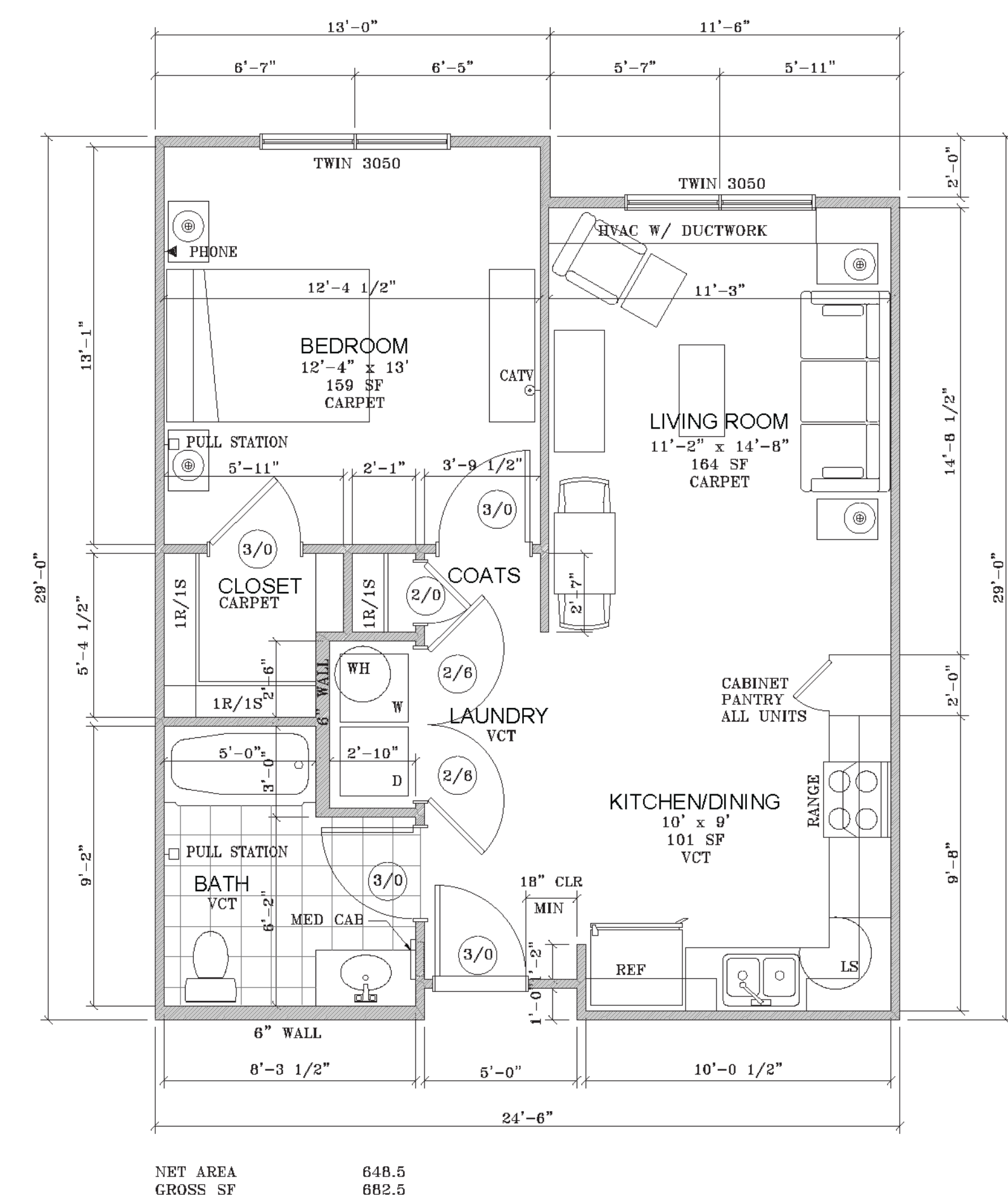
2

1-Bedroom Unit with Optional Shower

SCALE: 1/4" = 1'-0"



NET AREA 648.5
GROSS SF 682.5



NET AREA 648.5
GROSS SF 682.5

1

1-Bedroom Handicap Unit Floor Plan

SCALE: 1/4" = 1'-0"

1

1-Bedroom Unit Floor Plan

SCALE: 1/4" = 1'-0"