

**SEEDING SCHEDULE**  
(REVISED 1-1-80)

**Shoulders, Side Ditches, Slopes (Max. 3:1)**

Date	Type	Planting Rate
Aug 15-Nov 1	Tall Fescue	300 lbs./acre
Nov 1 - Mar 1	Tall Fescue	300 lbs./acre
	& Abruzzi Rye	25 lbs./acre
Mar 1-Apr 15	Tall Fescue	300 lbs./acre
Apr 15-Jun 30	Hulled Common Berseemgrass	25 lbs./acre
Jul 1 - Aug 15	Tall Fescue and ***Bromus-Hybrid	35 lbs./acre
	***Sorghum-Sudan Hybrids	30 lbs./acre

**Slopes (2:1 to 3:1)**

Mar 1-Jun 1	Secura Legumosa (scarified)	50 lbs./acre
(Mar 1-Apr 15)	***Tall Fescue	120 lbs./acre
(Mar 1-Jun 30)	***Tall Fescue	120 lbs./acre
Jun 1-Sep 1	***Tall Fescue and ***Bromus-Hybrid	35 lbs./acre
	***Sorghum-Sudan Hybrids	30 lbs./acre
Sep 1 - Mar 1	Secura Legumosa (unhulled- unscarified)	70 lbs./acre
(Nov 1-Mar 1)	***Tall Fescue and Tall Fescue and Abruzzi Rye	120 lbs./acre 25 lbs./acre

Consult Conservation Engineer or Soil Conservation Service for additional information concerning other alternatives for vegetation of denuded areas. The above vegetation rates are those which do well under local conditions; other seeding rate combinations are possible.

\*\*\*Temporary - Based according to optimum season for desired permanent vegetation. Do not allow temporary cover to grow over 12" in height before mowing, otherwise fescue may be shaded out.

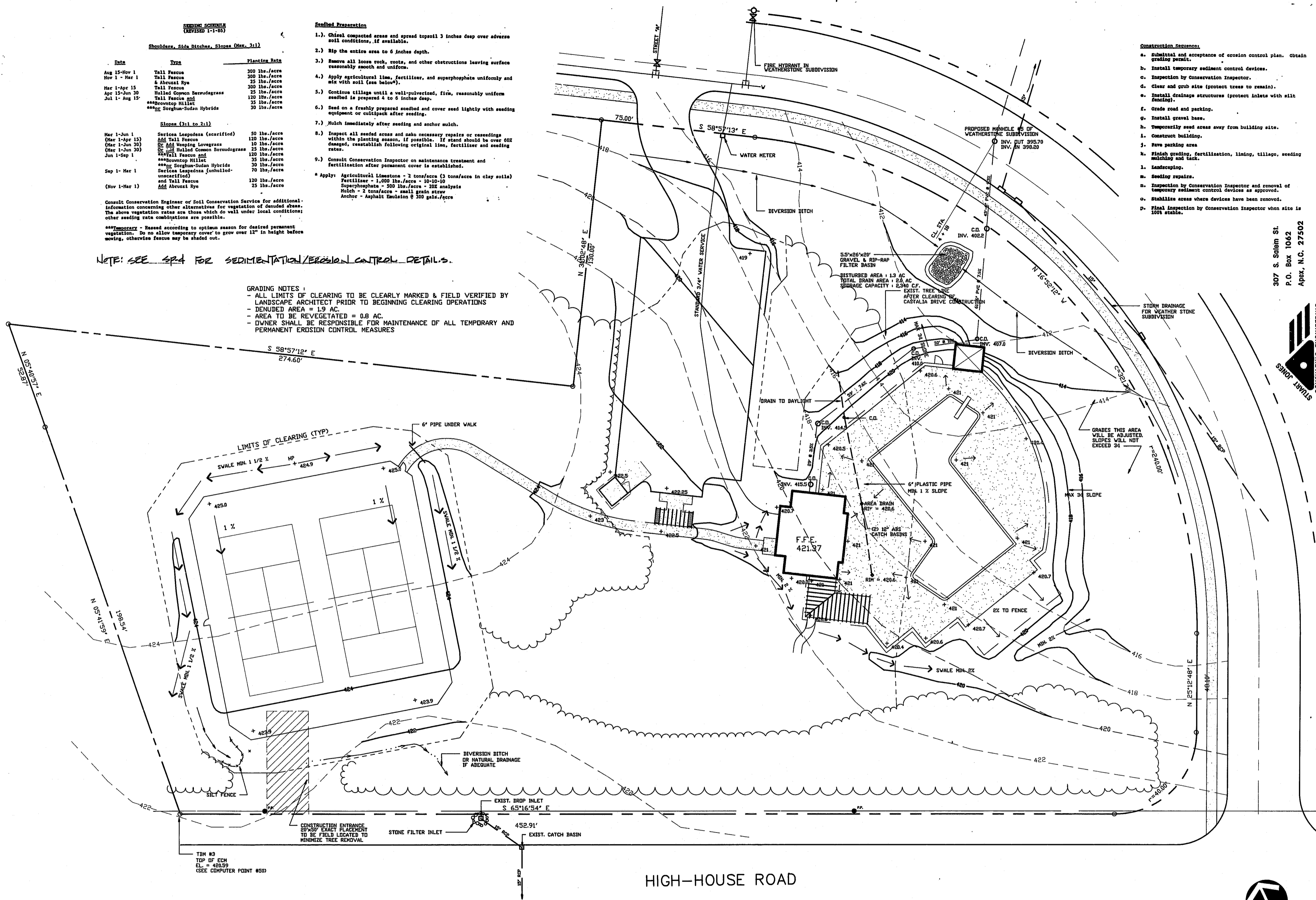
NOTE: SEE SP4 FOR SEDIMENTATION/EROSION CONTROL DETAILS.

**Seedbed Preparation**

- 1.) Chisel compact areas and spread topsoil 3 inches deep over adverse soil conditions, if available.
  - 2.) Rip the entire area to 6 inches depth.
  - 3.) Remove all loose rock, roots, and other obstructions leaving surface reasonably smooth and uniform.
  - 4.) Apply agricultural lime, fertilizer, and superphosphate uniformly and mix with soil (see below).
  - 5.) Continue tillage until a well-pulverized, firm, reasonably uniform seedbed is prepared 4 to 6 inches deep.
  - 6.) Seed on a freshly prepared seedbed and cover seed lightly with seeding equipment or cultipack after seeding.
  - 7.) Mulch immediately after seeding and anchor mulch.
  - 8.) Inspect all seeded areas and make necessary repairs or reseeds within the planting season, if possible. If stand should be over 40% damaged, reestablish following original lime, fertilizer and seeding rates.
  - 9.) Consult Conservation Inspector on maintenance treatment and fertilization after permanent cover is established.
- \* Apply: Agricultural limestone - 2 tons/acre (3 tons/acre in clay soils)  
Fertilizer - 1,000 lbs./acre - 10-10-10  
Superphosphate - 500 lbs./acre - 202 analysis  
Mulch - 2 tons/acre - small grain straw  
Anchor - Asphalt Emulsion @ 300 gals./acre

**GRADING NOTES:**

- ALL LIMITS OF CLEARING TO BE CLEARLY MARKED & FIELD VERIFIED BY LANDSCAPE ARCHITECT PRIOR TO BEGINNING CLEARING OPERATIONS
- DENUDE AREA = 1.9 AC.
- AREA TO BE REVEGETATED = 0.8 AC.
- OWNER SHALL BE RESPONSIBLE FOR MAINTENANCE OF ALL TEMPORARY AND PERMANENT EROSION CONTROL MEASURES



- Construction Sequence:**
- Substantial and acceptance of erosion control plan. Obtain grading permit.
  - Install temporary sediment control devices.
  - Inspection by Conservation Inspector.
  - Clear and grub site (protect trees to remain).
  - Install drainage structures (protect inlets with silt fencing).
  - Grade road and parking.
  - Install gravel base.
  - Temporarily seed areas away from building site.
  - Construct building.
  - Save parking area.
  - Finish grading, fertilization, liming, tillage, seeding mulching and tank.
  - Landscaping.
  - Seeding repairs.
  - Inspection by Conservation Inspector and removal of temporary sediment control devices as approved.
  - Stabilize areas where devices have been removed.
  - Final inspection by Conservation Inspector when site is 100% stable.

307 S. Salem St.  
P.O. Box 1062  
Apex, N.C. 27502  
(919) 387-1174

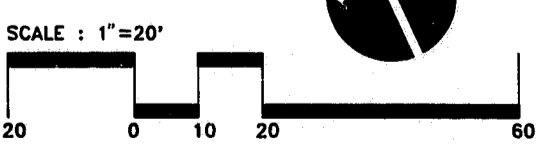


paton  
zucchino &  
associates  
p.a.

GRADING/SEDIMENTATION/  
EROSION CONTROL PLAN

WEATHERSTONE SWIM & TENNIS CLUB

HIGH-HOUSE ROAD



SP-2