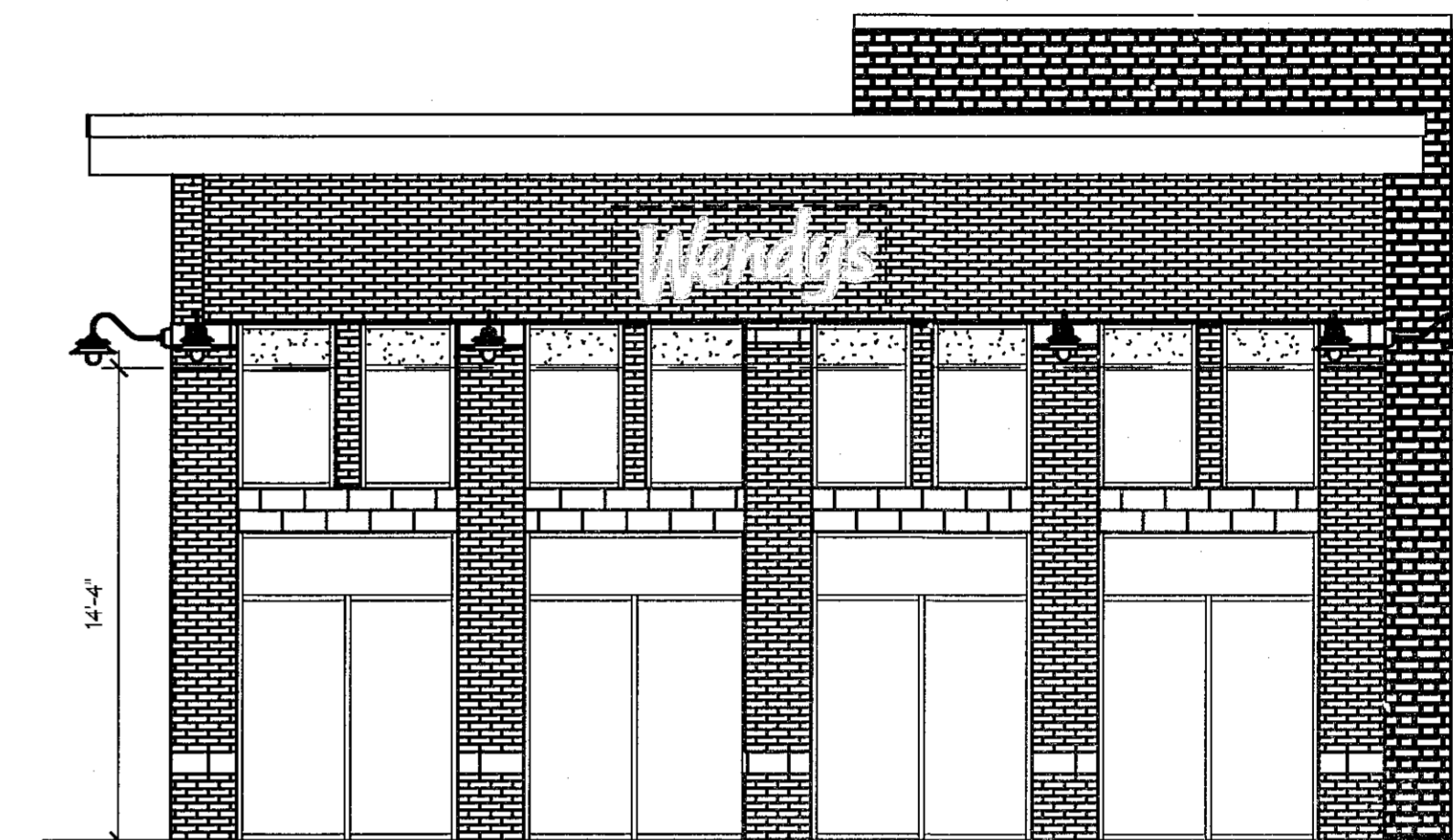


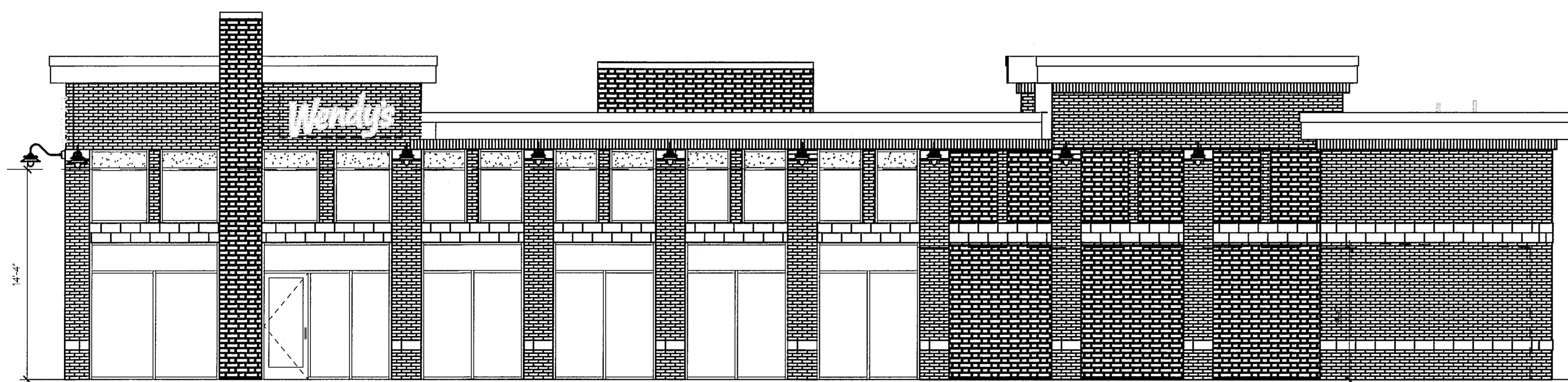
WEST ELEVATION

FACADE @ 14'-4" AFF 325 SF
 FACADE @ 9' AFF 655 SF
 FACADE TOTAL - 980 SF
 W & D 285 SF : 29%



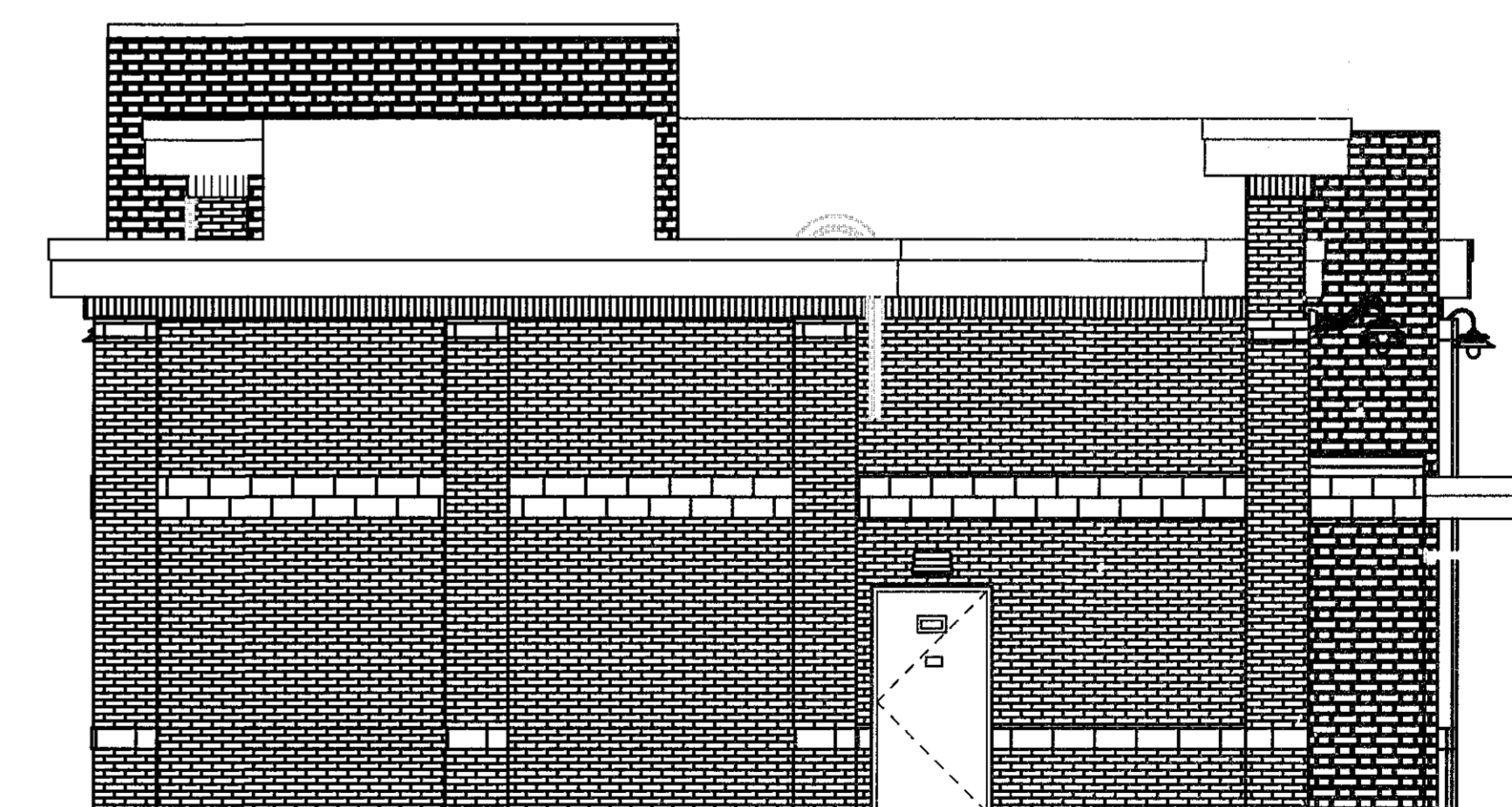
SOUTH ELEVATION

TOTAL FACADE @ 14'-4" AFF 528 SF
 W & D 378 SF : 72%



EAST ELEVATION

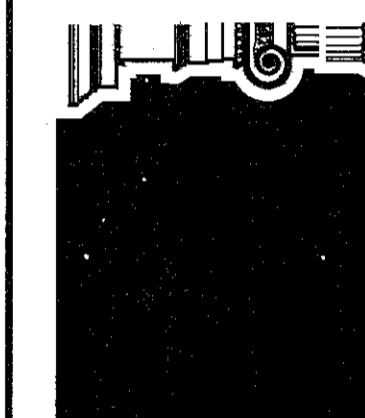
FACADE @ 14'-4" AFF : 833 SF
 FACADE @ 9' AFF : 247 SF
 TOTAL - 1,080 SF
 W & D 594 SF : 55%



NORTH ELEVATION



Ionic DeZign Studios
 ARCHITECTURE • INTERIORS • GRAPHICS
 249 INDEPENDENCE BOULEVARD
 PEMBROKE FIVE • SUITE 308 • VA BEACH, VA 23462
 TEL: 757.499.3510 • FAX: 757.499.3510 • www.ionicdezign.com



NOT FOR
 CONSTRUCTION

Comm # 140229
 Scale: AS NOTED
 Designed by: DEW
 Drawn by: JRM
 Checked by: DEW
 Issue: Date:
 SAC REVISED SUBMITTAL 12/11/14
 SAC REVISED SUBMITTAL #3 09/12/14

WENDY'S #11473
HIGH HOUSE RD.
 High House Rd., Cary, NC 27513
TRANSPARENCY OVERLAY

UM STND + NRE
 Sheet Number

6

14-SP-066
 HTE #: 15-0499
 APPROVED BY THE TOWN OF CARY
 DEVELOPMENT REVIEW COMMITTEE
 PLANNER: *K.H.* DATE: 11 Sep 2015

IONIC DEZIGN STUDIOS ARCHITECTURE AND INTERIOR DESIGN. ALL RIGHTS RESERVED. THIS DRAWING IS THE PROPERTY OF IONIC DEZIGN STUDIOS. NO PART OF THIS DRAWING IS TO BE REPRODUCED, COPIED, OR LOANED IN ANY FORM OR BY ANY MEANS, WITHOUT THE WRITTEN PERMISSION AND CONSENT OF IONIC DEZIGN STUDIOS. FOR ANY PART OF THIS DRAWING TO BE ASSIGNED TO ANY PARTY WITHOUT THE WRITTEN PERMISSION AND CONSENT OF IONIC DEZIGN STUDIOS.