

PLANT LIST

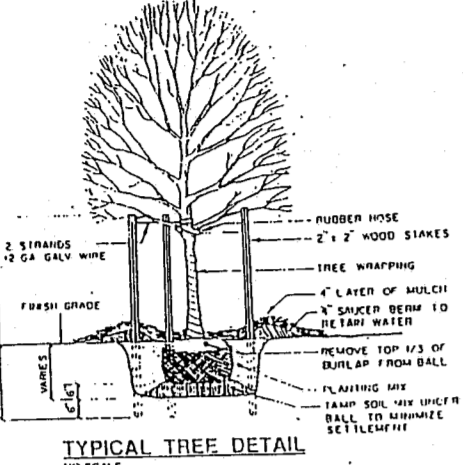
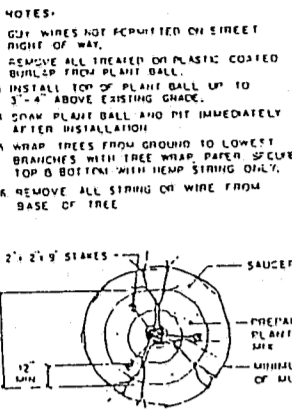
SYMBOL	QTY.	BOTANICAL NAME	COMMON NAME	CAL.	HT.	ROOT	REMARKS
	27	<i>Quercus phellos</i>	Willow Oak	3"-3.5"	14'-16'	B & B	
	49	<i>Zelkova serrata</i> 'Village Green'	Village Green Zelkova	3"-3.5"	14'-16'	B & B	
	22	<i>Quercus rubra</i> maxima	Eastern Red Oak	3"-3.5"	14'-16'	B & B	
	29	<i>Acer rubrum</i> 'Red Sunset'	Sunset Red Maple	3"-3.5"	14'-16'	B & B	
	5	<i>Pinus taeda</i>	Loblolly Pine		8'-10'	B & B	
	22	<i>Pinus nigra</i>	Virginia Pine		4'-5'	B & B	
	21	<i>Tsuga canadensis</i>	Canadian Hemlock		4'-5'	B & B	
	59	<i>Lagerstroemia indica</i> 'Tuskegee'	Tuskegee Crapeyrtille		8'-10'	B & B	Tree-form, 3 Trunk min.
	14	<i>Cornus florida</i> 'Cherokee Chief'	Cherokee Chief Dogwood		8'-10'	B & B	
	102	<i>Ilex</i> 'Nellie R. Stevens'	Nellie Stevens Holly		4'-5'	B & B	
	9	<i>Cercis canadensis</i>	Eastern Redbud		8'-10'	B & B	
	205	<i>Cryptomeria japonica</i>	Cryptomeria		5' - 6'	Cont.	
	36	<i>Myrica cerifera</i>	Waxmyrtle		36"	Cont.	
	1310	<i>Juniperus davurica</i> 'Parsonii'	Parsons Juniper		18"-24"	Cont.	3 Gal., 3' o. c.
	120	<i>Prunus laurocerasus</i> 'Otto Luykens'	Otto Laurel		18"-24"	Cont.	
	25	<i>Ligustrum sisense</i> 'variegatum'	Variegated Ligustrum		36"	Cont.	
	28	<i>Ligustrum japonicum</i>	Japanese Privet		36"	Cont.	
	360	<i>Juniperus conferta</i> 'Blue Rug'	Blue Rug Juniper		18"-21"	Cont.	3 Gal., 3' o. c.
	96	<i>Ilex cornuta</i> 'Carissa'	Carissa Holly		24"	Cont.	3 Gal., 3' o. c.
	305	<i>Ilex crenata</i> 'Helleri'	Helleri Holly		24"	Cont.	3 Gal., 3' o. c.
	744	<i>Ilex cornuta</i> 'Burfordii Nana'	Dwarf Burford Holly		18"-21"	Cont.	3 Gal., 3' o. c.
	1520	<i>Liriope muscari</i> 'Variegata'	Variegated Liriope		4" pots	Cont.	12" o. c.

NOTES

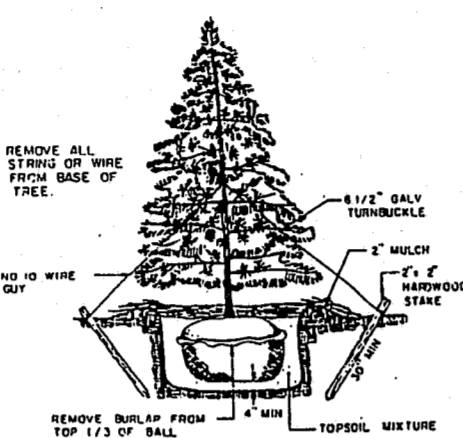
- This plan is for planting purposes only. For information related to grading, walls, etc., refer to the site & grading plans.
- All grass is to be 'Rebel II' Fescue.
- All plants and planting procedures shall meet or exceed A.A.N. standards as set forth in "American Standard for Nursery Stock" 1986 or latest edition.
- All shrub and plant beds shall be mulched with 4" clean pine straw.
- All trees and shrubs shall be full, well-branched plants which are characteristic of the species.
- Topsoil shall be spread over the entire landscaped area to a depth of at least 4" in lawn areas and 6" in shrub and groundcover beds.

Note: PUD documents require 50' buffers along residential uses to be undisturbed. These buffers have been planted to meet Type A standards as an enhancement to requirements.

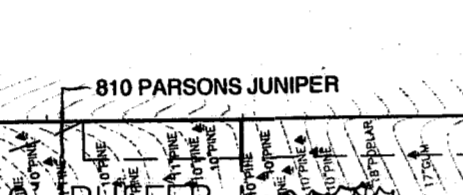
TYPICAL HVAC SCREENING DETAIL
SCALE 1" = 20'



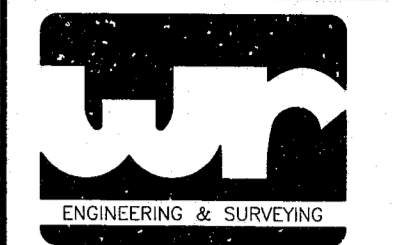
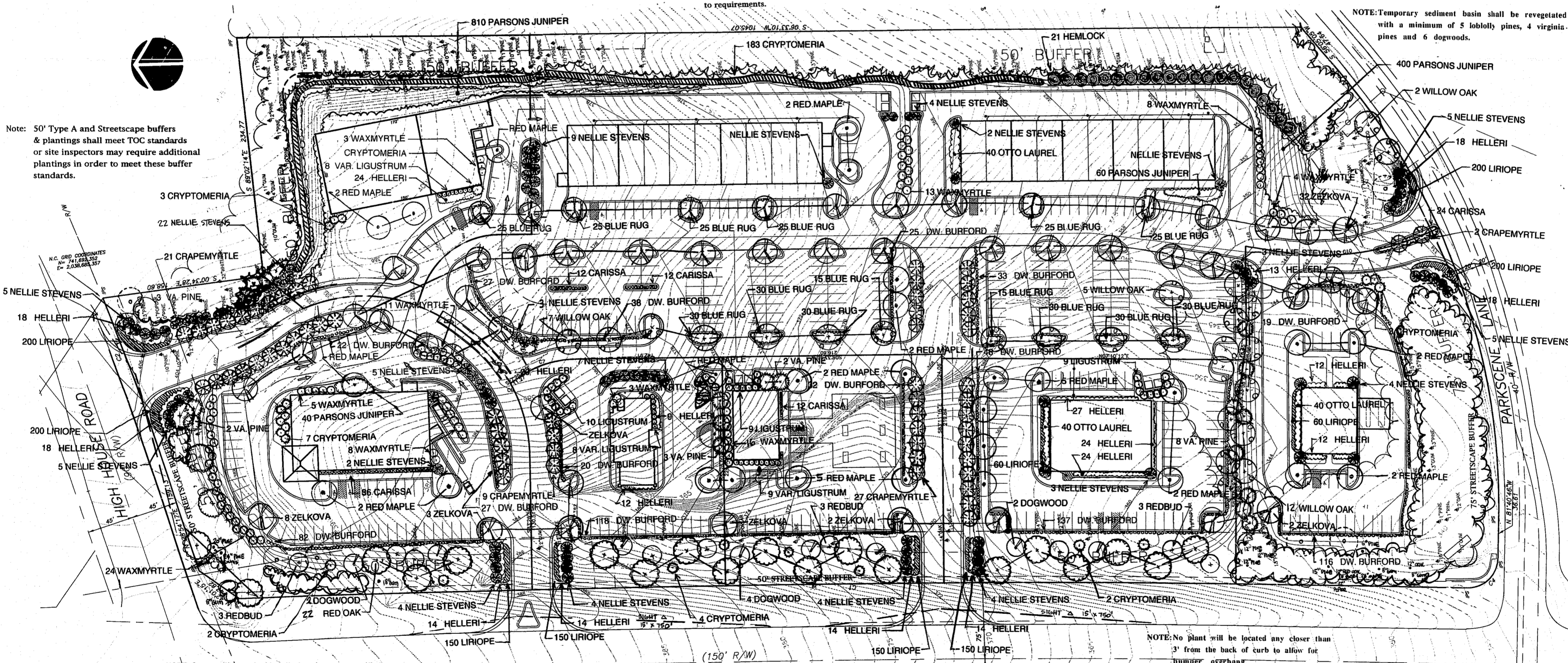
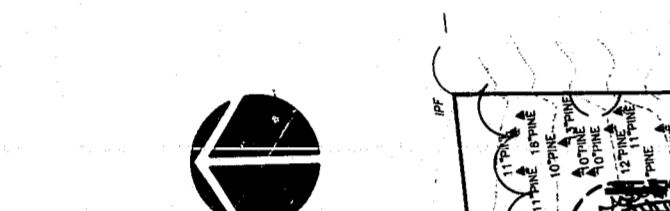
SHRUB BED PLANTING
NO SCALE



EVERGREEN PLANTING & GUYING
NO SCALE



PLANTING DETAIL - LARGE MATURING TREE
NO SCALE



WITHERS & RAVENEL
Engineering & Surveying, Inc.
111 MacKenan Drive
Cary, N.C. 27511
PHONE : 919-489-3340
FAX : 919-487-8008

SEALS

DRAWING TITLE
PLANTING PLAN

PROJECT TITLE
WEST PARK PLACE

REVISIONS	NUMBER	DESCRIPTION	DATE

DRAWN BY
CHECKED BY
DATE ISSUED 11/3/97
SCALE 1"=50'
JOB NO. 96184

SHEET NO. **3.0**

K:\DRAWINGS\PLANS\97\11\3\97\WITHERS & RAVENEL ENGINEERING & SURVEYING, INC.