

WITHERS & RAVENEL
Engineering & Surveying, Inc.

111 MacKenan Drive
Cary, N.C. 27511
PHONE : 919-469-3340
FAX : 919-467-6008

SEALS

DRAWING TITLE

**UTILITY
PROFILES
SANITARY
SEWER
LINES "A",
"B", "C", "D",
& "E"**

PROJECT TITLE

**WEST PARK
PLACE
PRELIMINARY
NOT APPROVED FOR CONSTRUCTION**

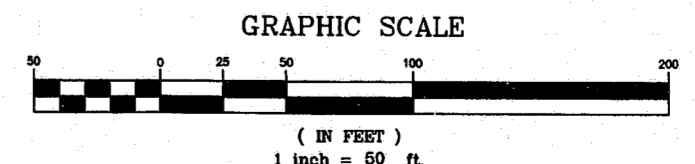
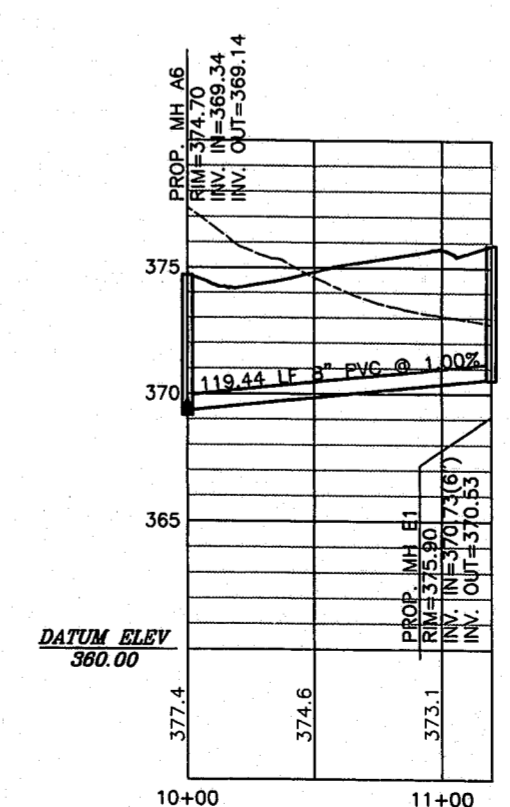
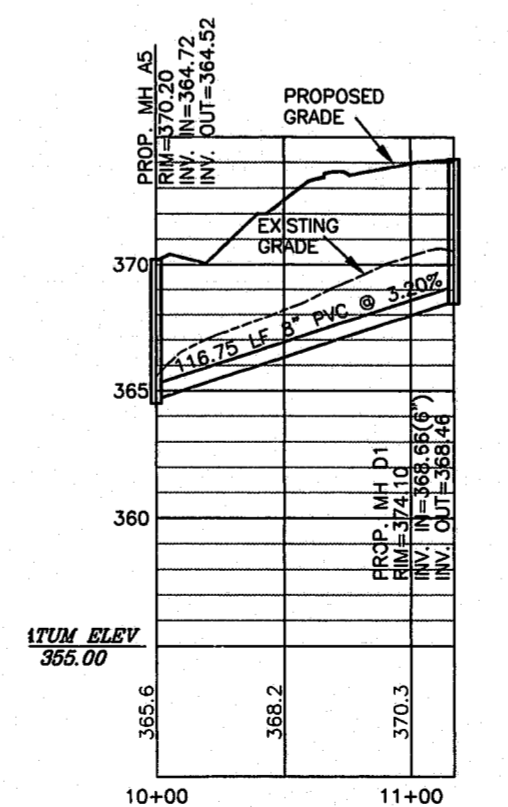
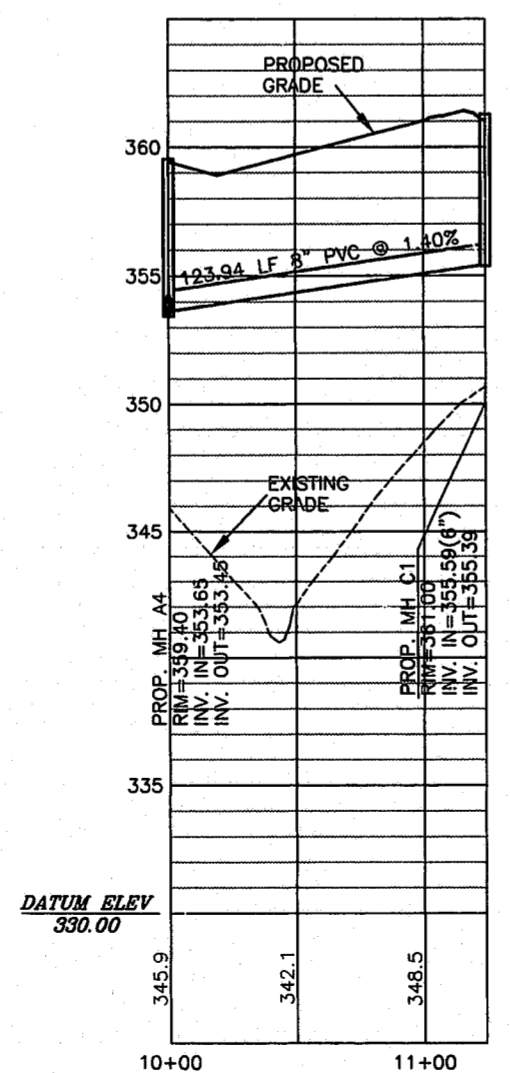
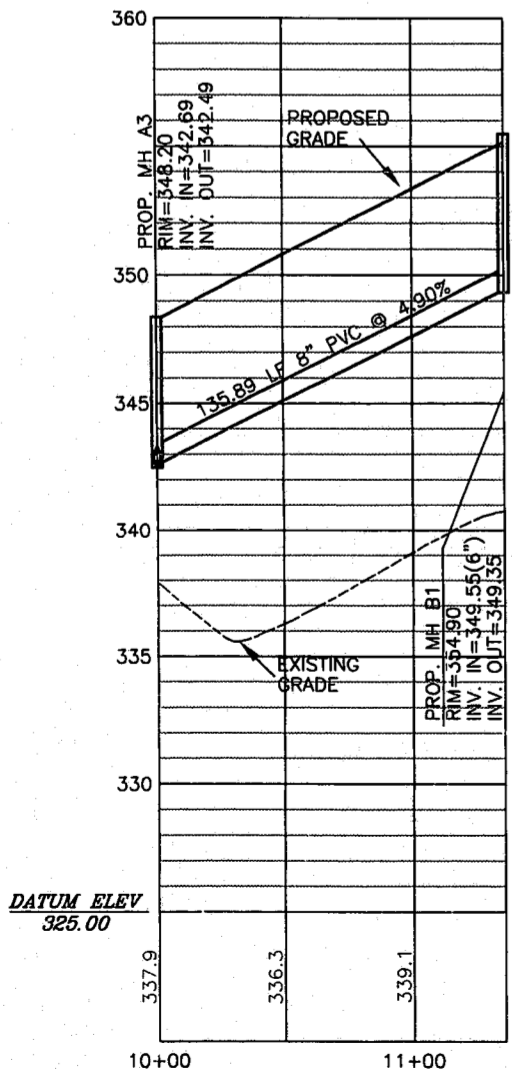
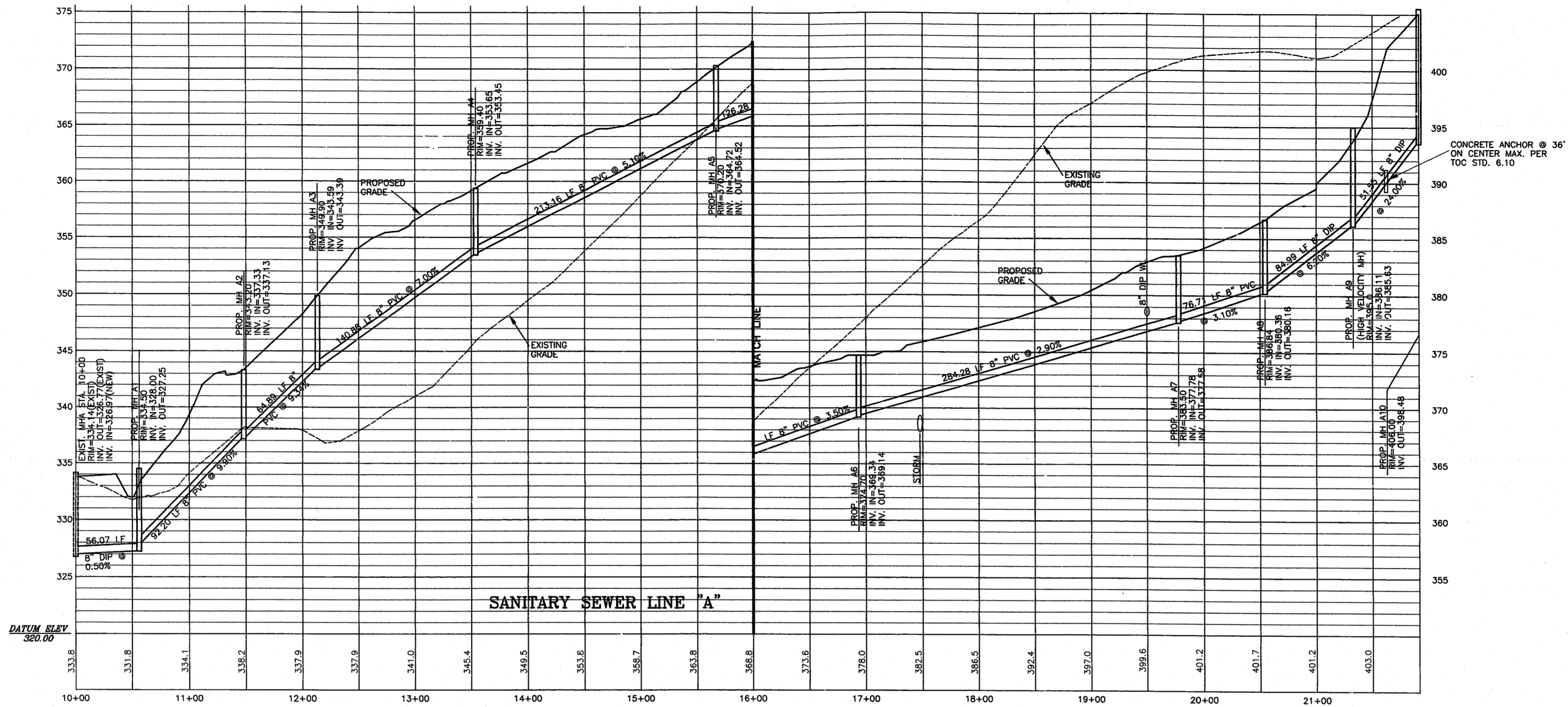
REVISIONS

NUMBER	DESCRIPTION	DATE
1	TOC 1ST REV COMMENTS	11/1/98
2	PER TOC 2ND REVIEW	12/14/98

DRAWN BY: DOU
CHECKED BY: LGS
DATE ISSUED: 10/30/97
SCALE: 1"=50'
JOB NO.: 96184

SHEET NO. **5.0**

OF .



K:\CAD\DWG\BRASH\5.0.dwg, P1: Dec 11 10:23:44 1999, WITHERS & RAVENEL, ENGINEERING & SURVEYING, INC., HP DesignJet 650C, Hewlett-Packard HP-GL/2 devices, A01.4.3 - for AutodesK by HP