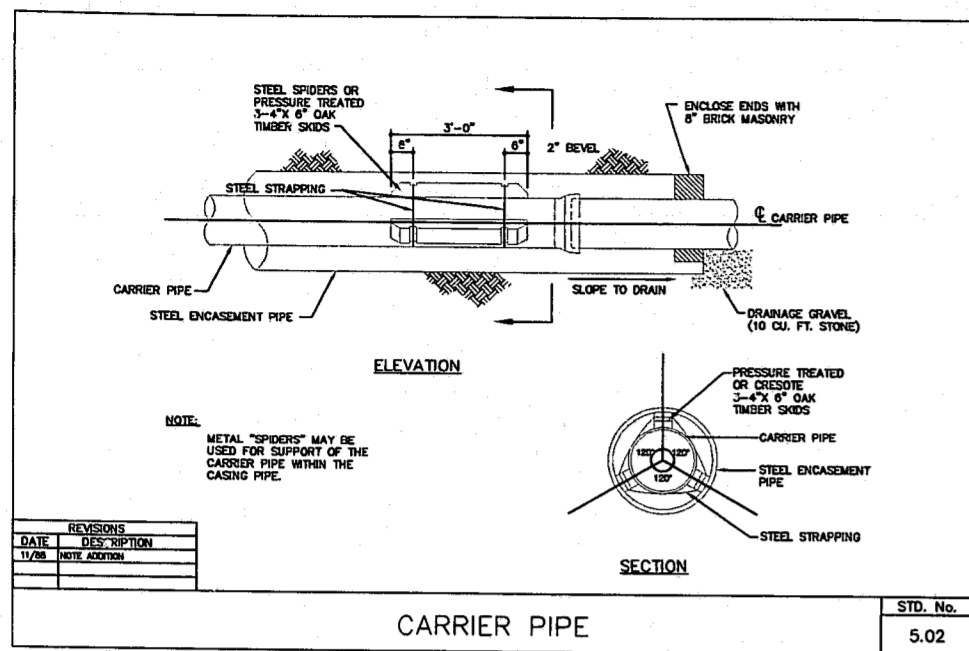




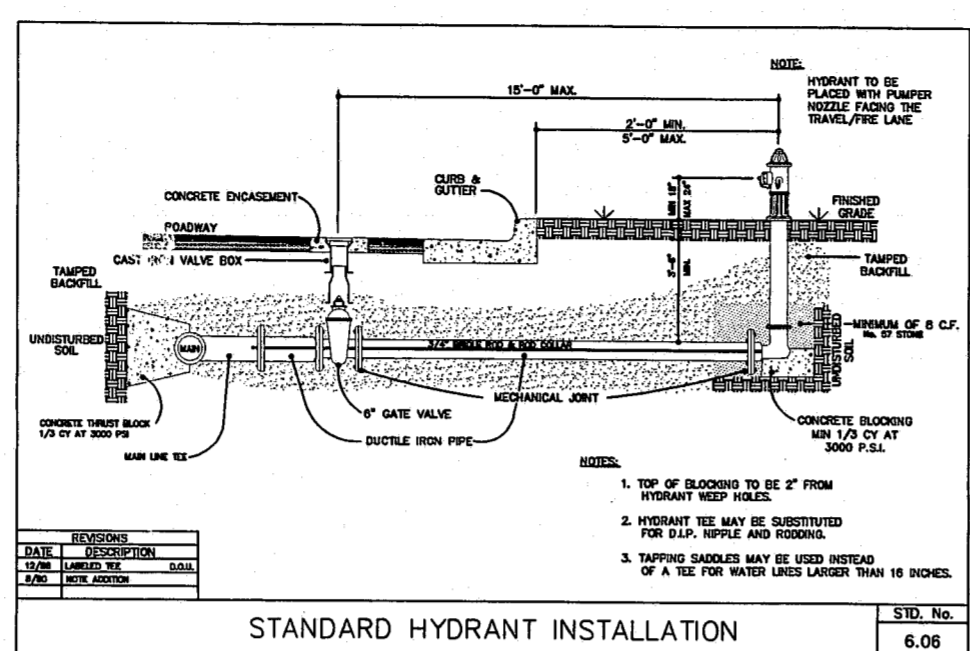
**WITHERS & RAVENEL**  
Engineering & Surveying, Inc.

111 MacKean Drive  
Cary, N.C. 27511  
PHONE : 919-469-3340  
FAX : 919-467-6068

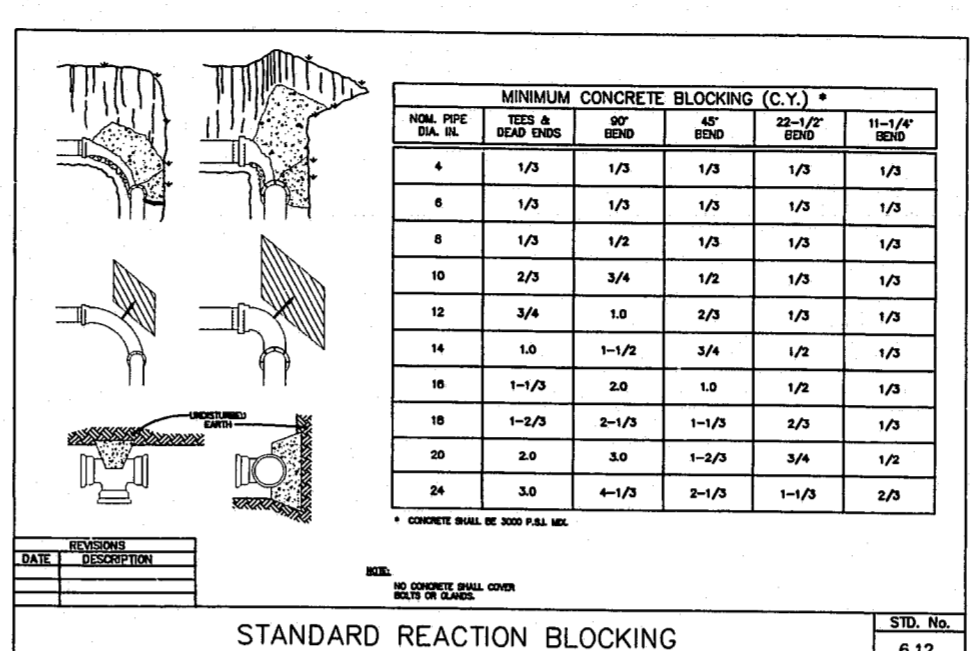
SEALS



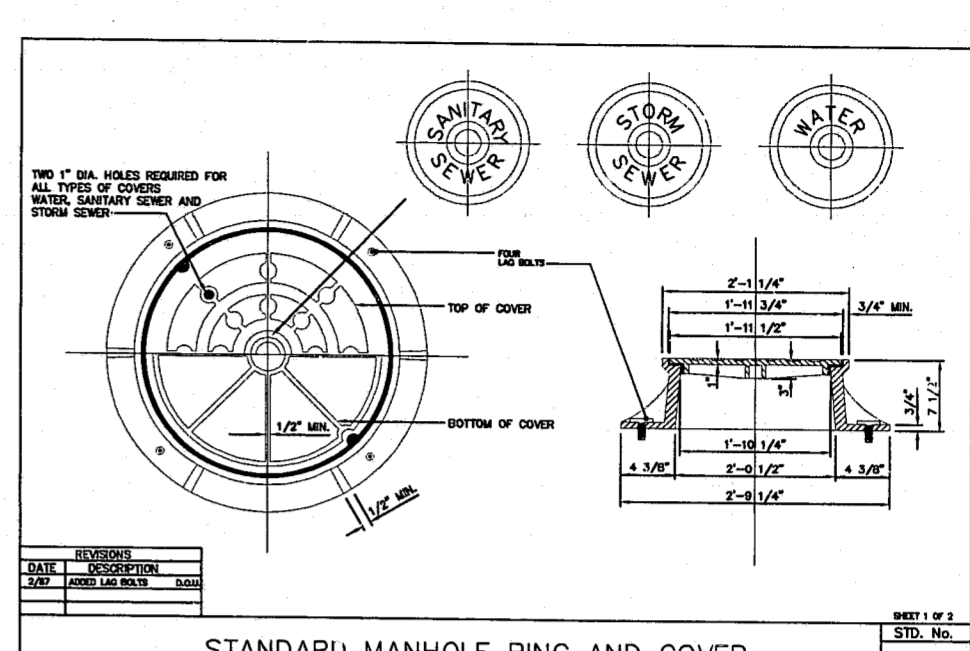
CARRIER PIPE  
STD. No. 5.02



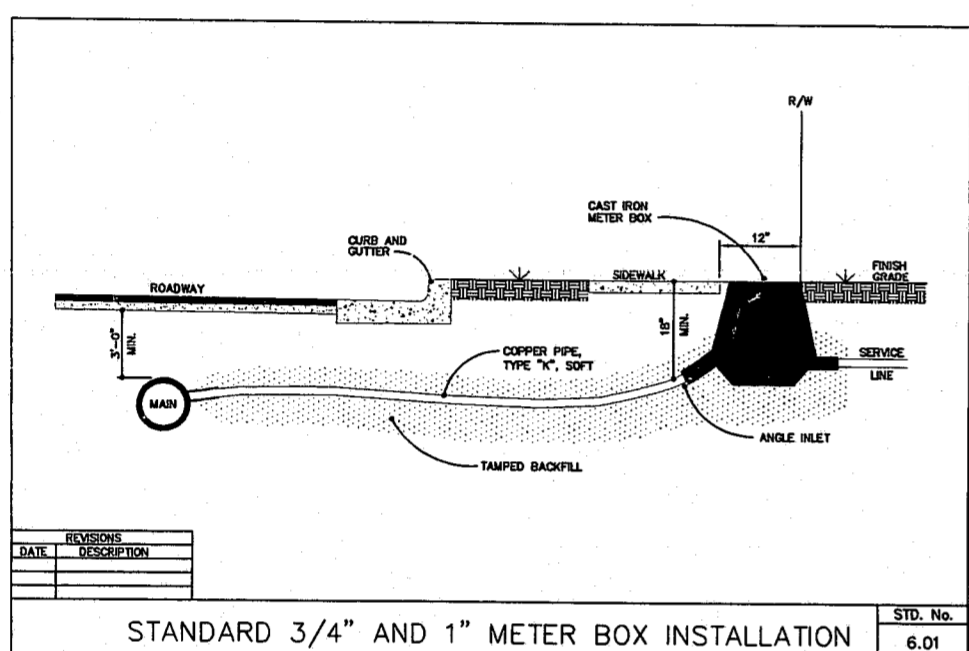
STANDARD HYDRANT INSTALLATION  
STD. No. 6.06



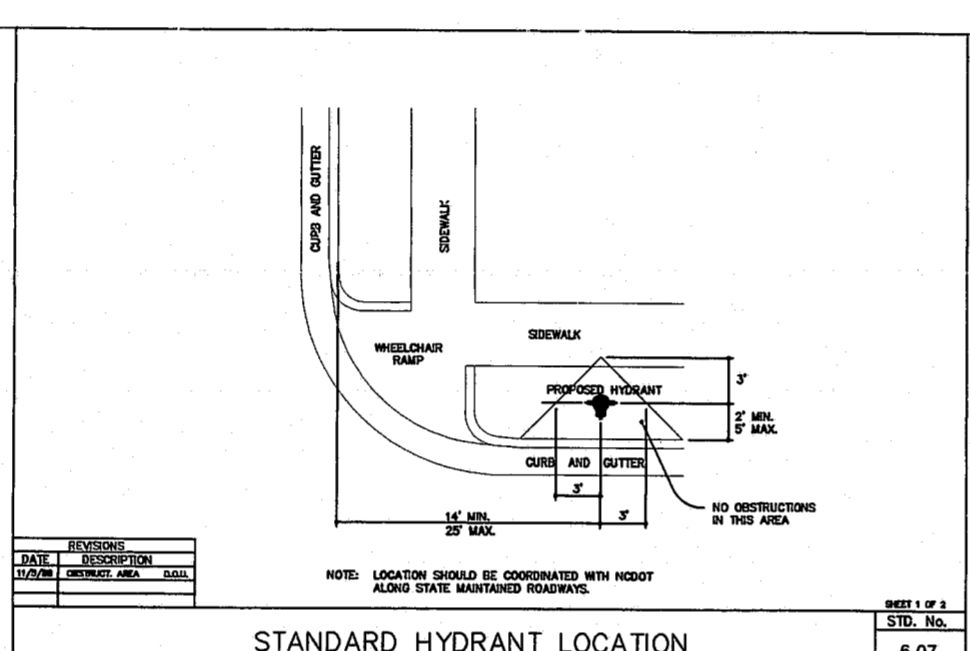
STANDARD REACTION BLOCKING  
STD. No. 6.12



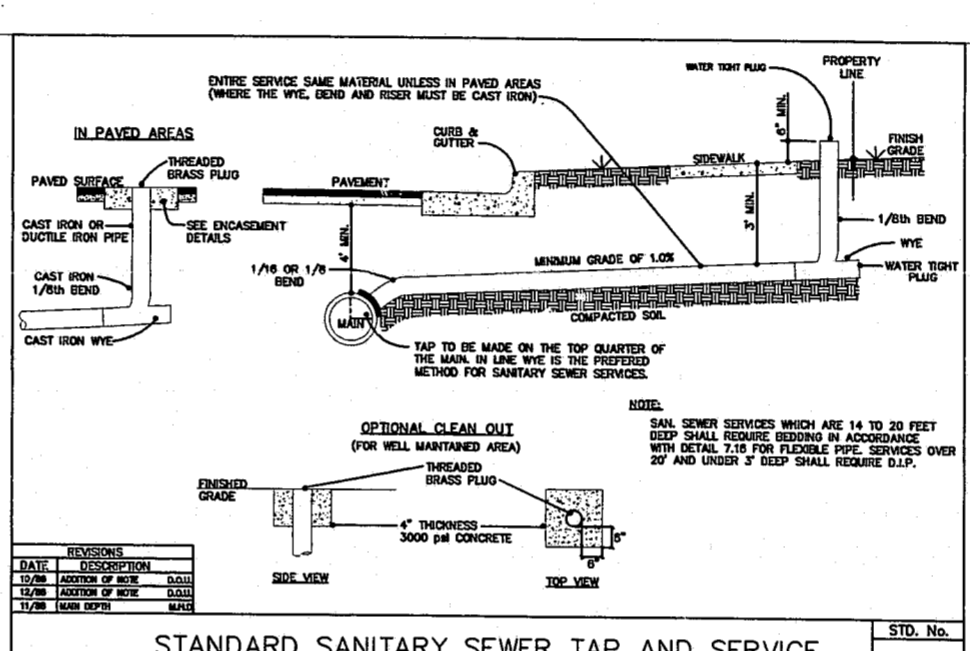
STANDARD MANHOLE RING AND COVER  
STD. No. 7.06



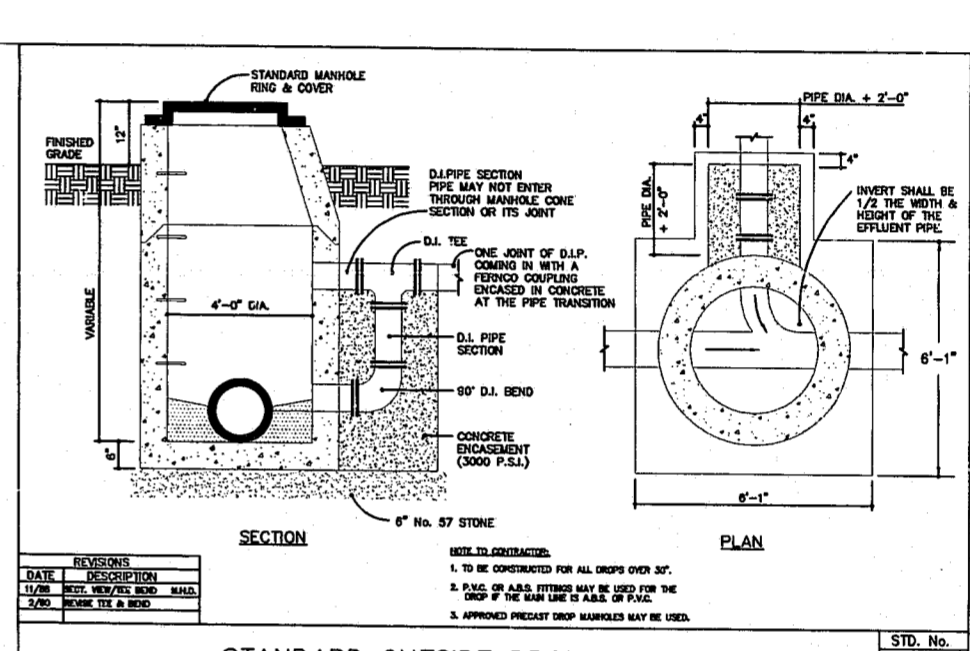
STANDARD 3/4" AND 1" METER BOX INSTALLATION  
STD. No. 6.01



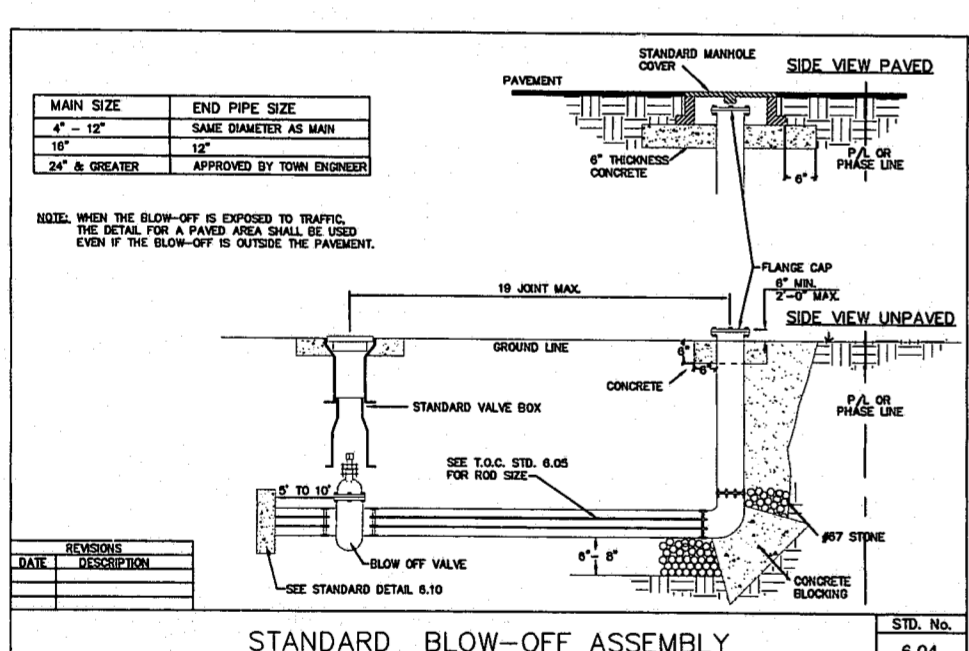
STANDARD HYDRANT LOCATION  
STD. No. 6.07



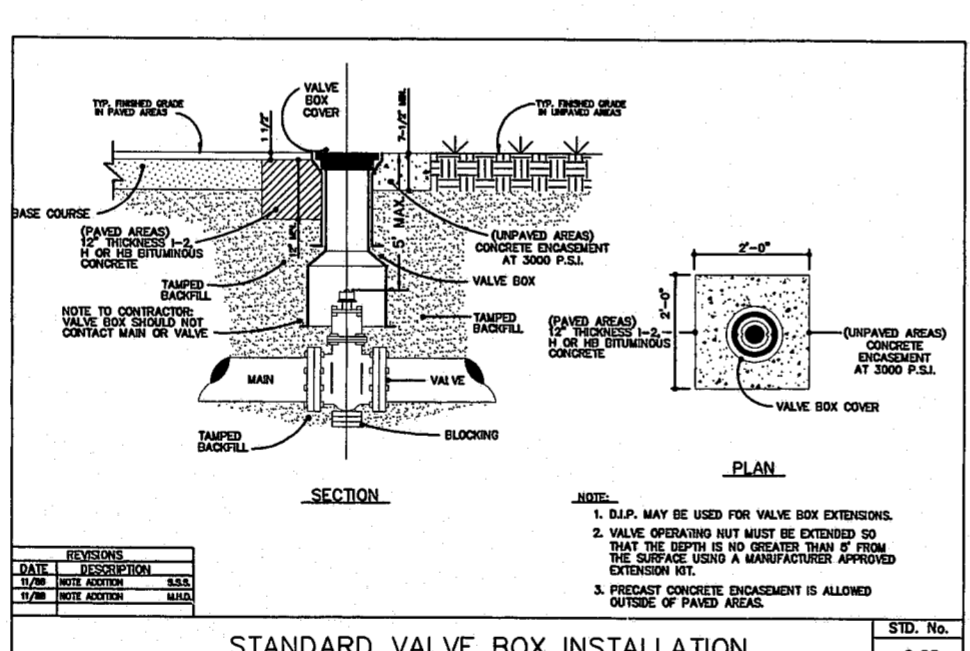
STANDARD SANITARY SEWER TAP AND SERVICE  
STD. No. 7.01



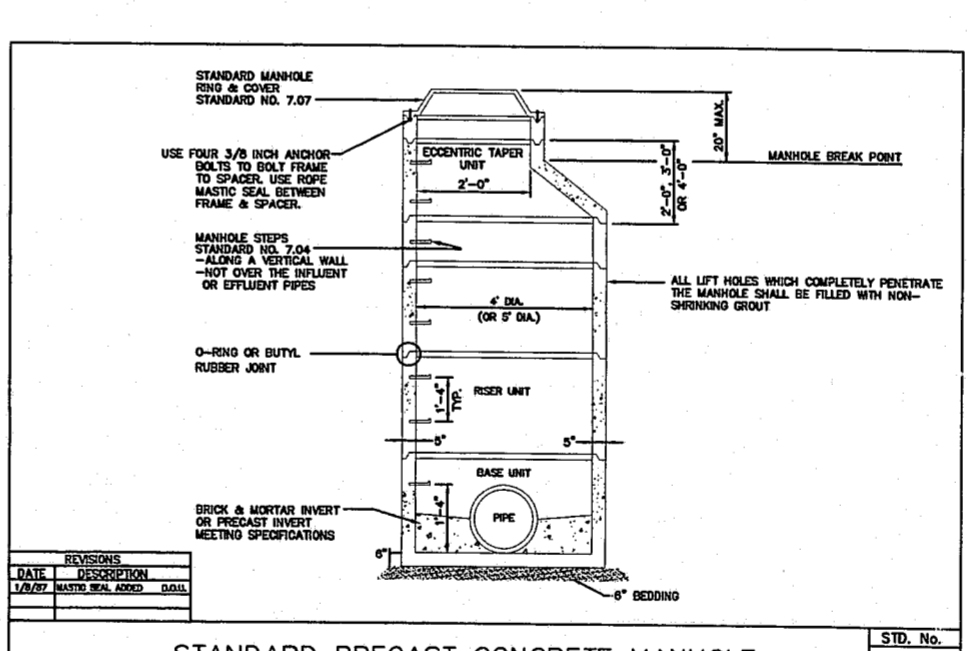
STANDARD OUTSIDE DROP MANHOLE  
STD. No. 7.08



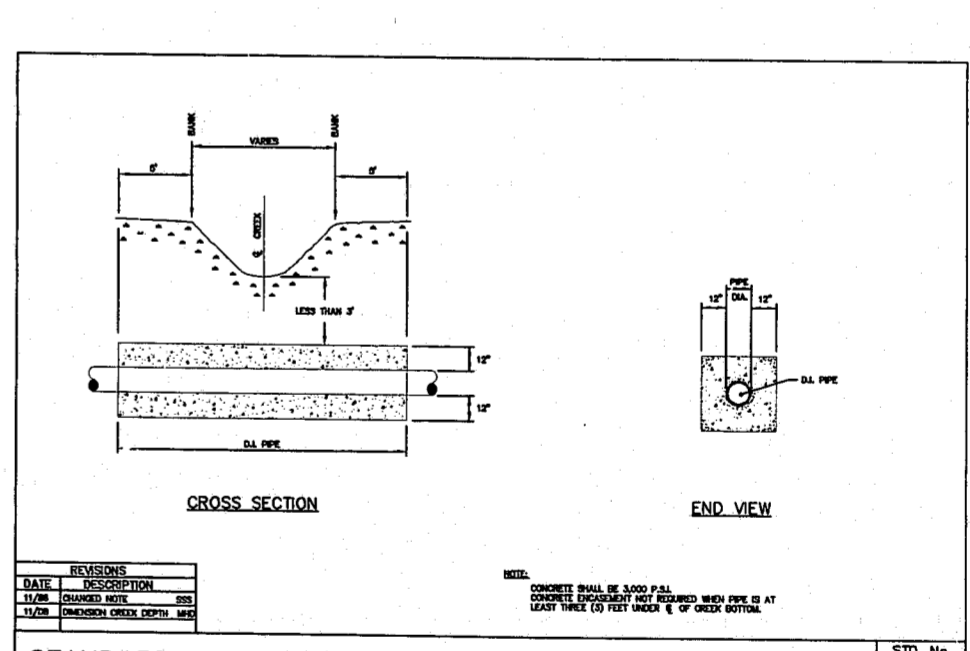
STANDARD BLOW-OFF ASSEMBLY  
STD. No. 6.04



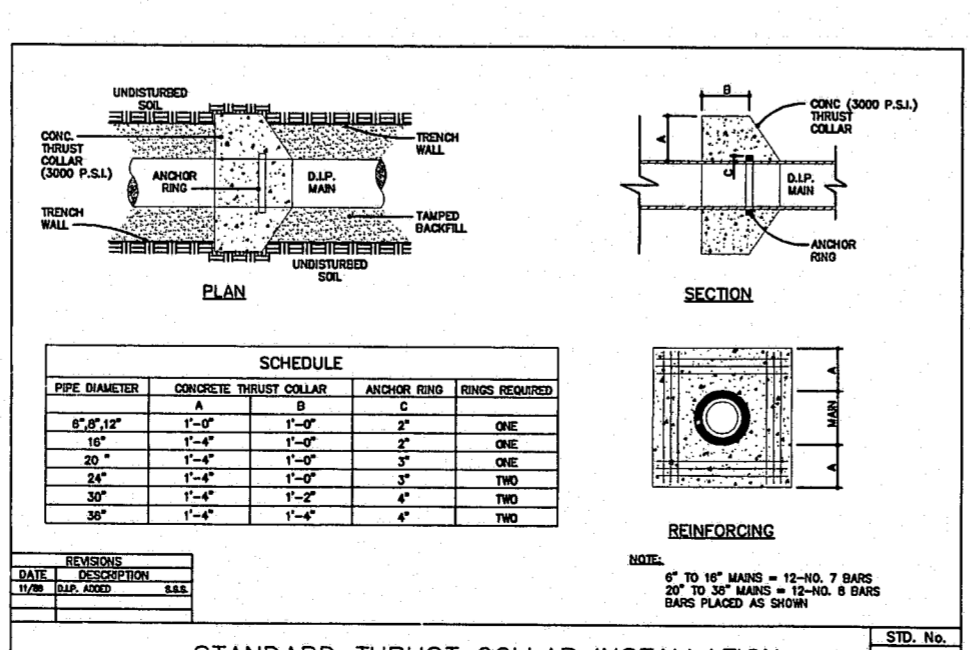
STANDARD VALVE BOX INSTALLATION  
STD. No. 6.08



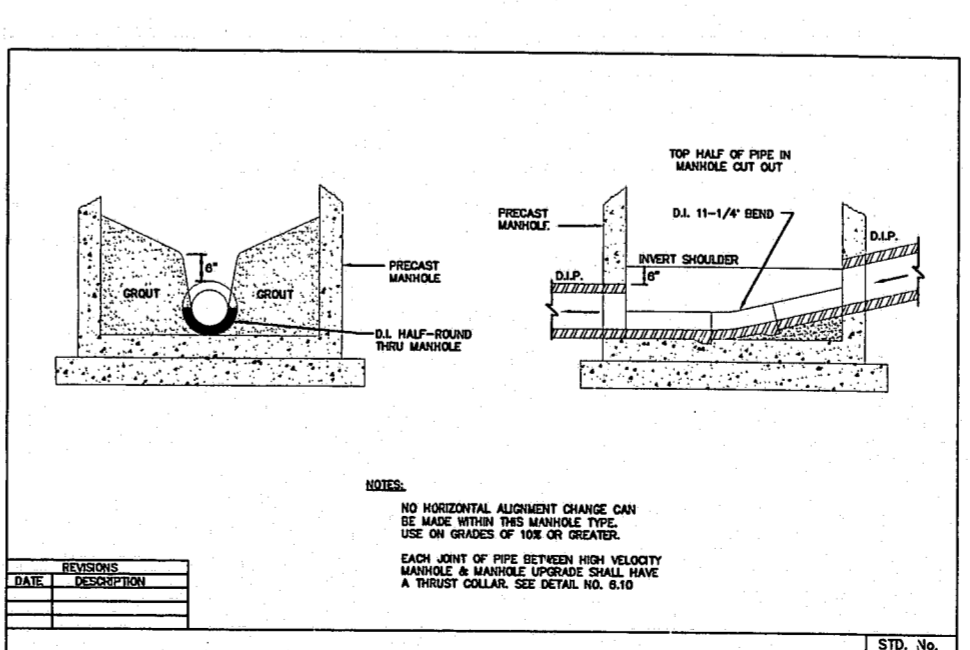
STANDARD PRECAST CONCRETE MANHOLE  
STD. No. 7.03



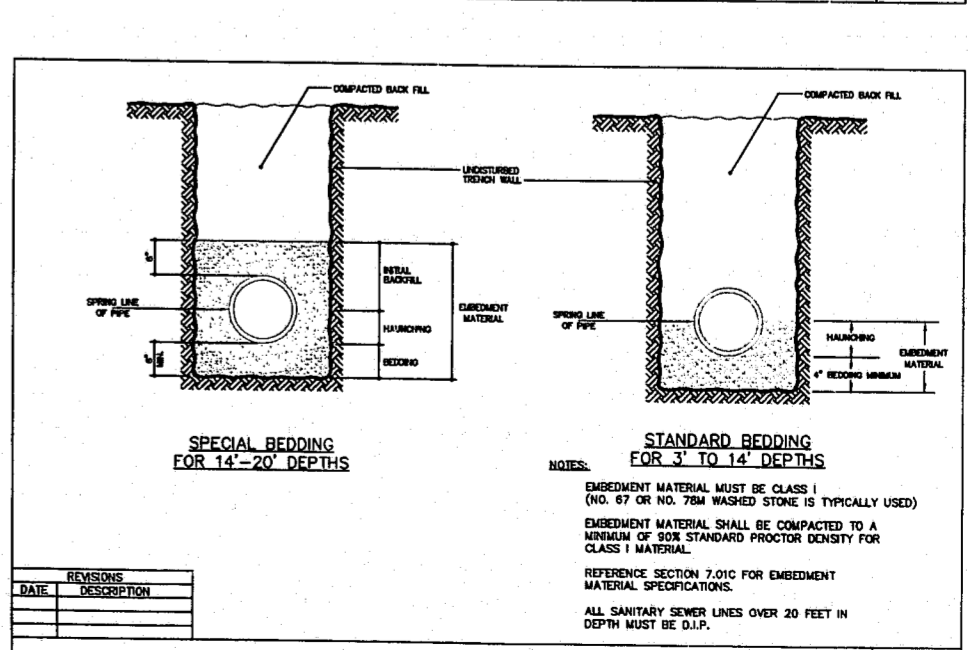
STANDARD CONCRETE ENCASMENT FOR STREAM CROSSING  
STD. No. 7.13



STANDARD THRUST COLLAR INSTALLATION  
STD. No. 6.10



STANDARD HIGH VELOCITY MANHOLE INVERT  
STD. No. 7.05



BEDDING FOR FLEXIBLE & SEMI-RIGID SANITARY SEWER PIPE  
STD. No. 7.16

DRAWING TITLE  
**UTILITY DETAILS**

PROJECT TITLE  
**WEST PARK PLACE**  
**PRELIMINARY**  
NOT APPROVED FOR CONSTRUCTION

REVISIONS

NUMBER	DESCRIPTION	DATE
1	TOC 1ST REV COMMENTS	11/1/98

DRAWN BY: DOJ/ATB  
CHECKED BY: LGS  
DATE ISSUED: 8/1/1997  
SCALE: NTS  
JOB NO.: 96184

SHEET NO. **6.0**

I:\CAD\PLANS\BASIS\SH16.0.dwg F:\1 Dec 11 16:24:23 1998 WITHERS & RAVENEL, ENGINEERING & SURVEYING, INC.  
 HP Designer: 650C Hewlett-Packard HP-GL/2 devices, ADI 4.3 - for Autodesks by HP