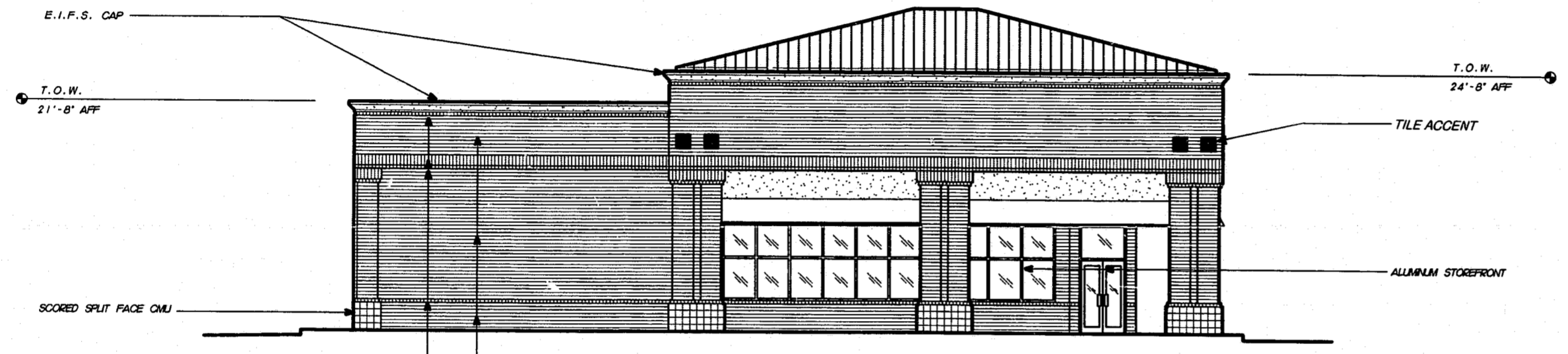
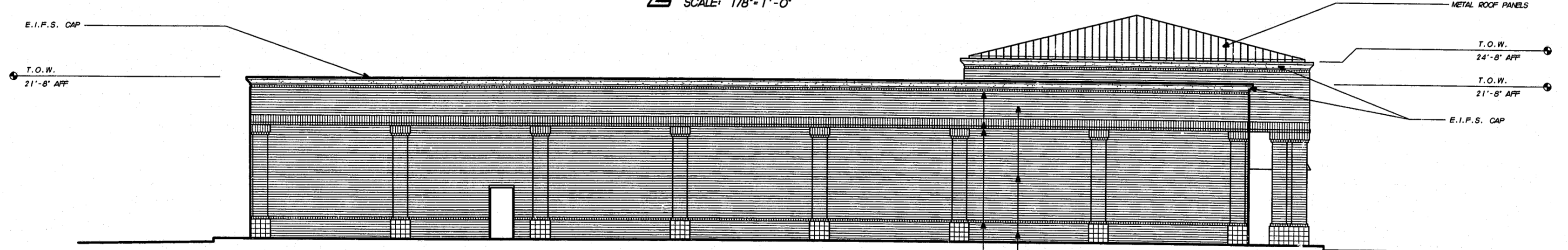


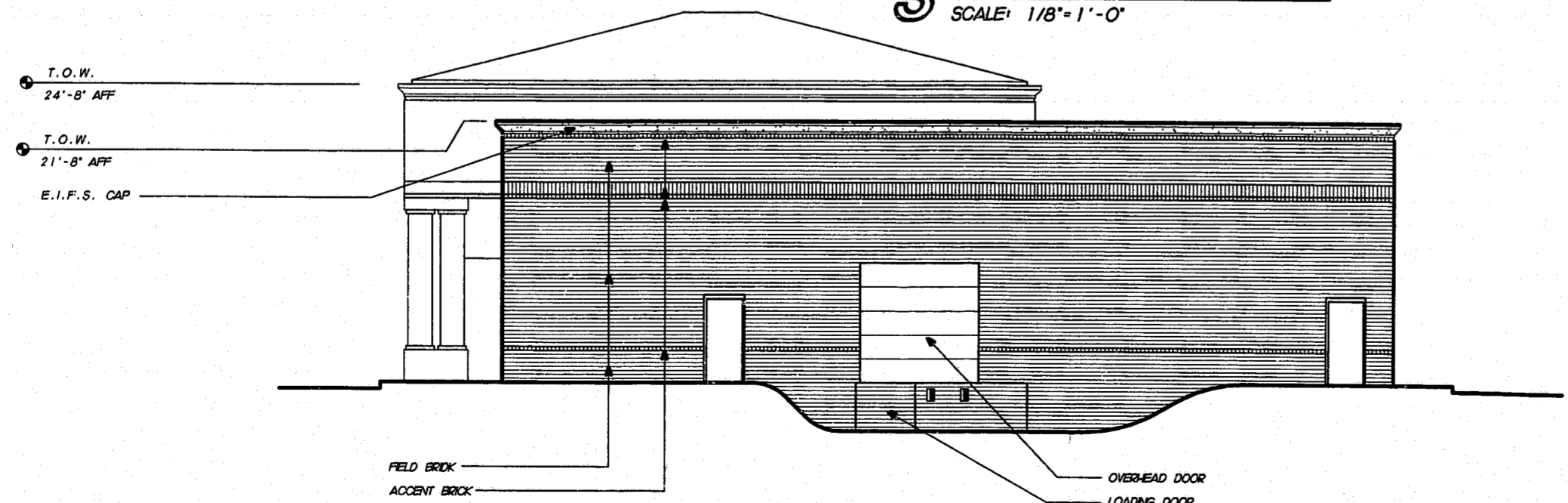
1 ELEVATION
SCALE: 1/8"=1'-0"



2 ELEVATION
SCALE: 1/8"=1'-0"



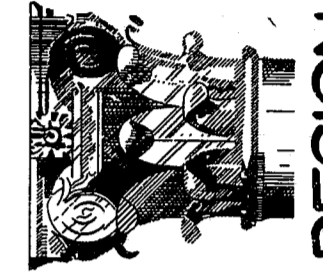
3 ELEVATION
SCALE: 1/8"=1'-0"



4 ELEVATION
SCALE: 1/8"=1'-0"

DEVELOPMENT MATERIALS & COLORS

- FIELD BRICK - RED BRICK (WIRECUT)
- ACCENT BRICK - BURGUNDY
- E.I.F.S. - CREME
- SPLIT FACE BLOCK - CREME
- TILE ACCENTS - DARK GREEN OR BURGUNDY
- CANVAS AWINGS - DARK GREEN, BURGUNDY OR DARK GREEN/BURGUNDY STRIPE
- STOREFRONT - CLEAR ANODIZED ALUMINUM
- METAL ROOFING - DARK GREEN
- H/M DOORS / OH DOORS - DARK GREEN



DESIGN DEVELOPMENT
1100 LOOPER COURT, SUITE A103
RALEIGH, NORTH CAROLINA 27609
919.878.3690 FAX 919.876.3618

PROJECT:
PHARMACY BUILDING 1 FOR WEST PARK PLACE
HIGH HOUSE ROAD & NC HWY 55
CARY, NORTH CAROLINA

TYPE OCCUPANCY
BLDG S.F.

DATE	REVISION

PROJECT #:
960071
DATE:
NOV. 19, 1997
DRAWN BY/CHECKED BY:

SHEET TITLE:
PA-2

NOT RELEASED FOR CONSTRUCTION

THE DRAWINGS AND DESIGN SHOWN ARE THE PROPERTY OF DESIGN DEVELOPMENT. THE REPRODUCTION OR USE THIS PROPERTY WITHOUT THE WRITTEN CONSENT OF THE ARCHITECT IS PROHIBITED AND ANY INFRINGEMENT OF THE OWNERSHIP RIGHTS IS SUBJECT TO LEGAL ACTION. ALL COPIES OF THESE DRAWINGS MUST BE RETURNED TO THE ARCHITECT AT THE COMPLETION OF THE WORK.