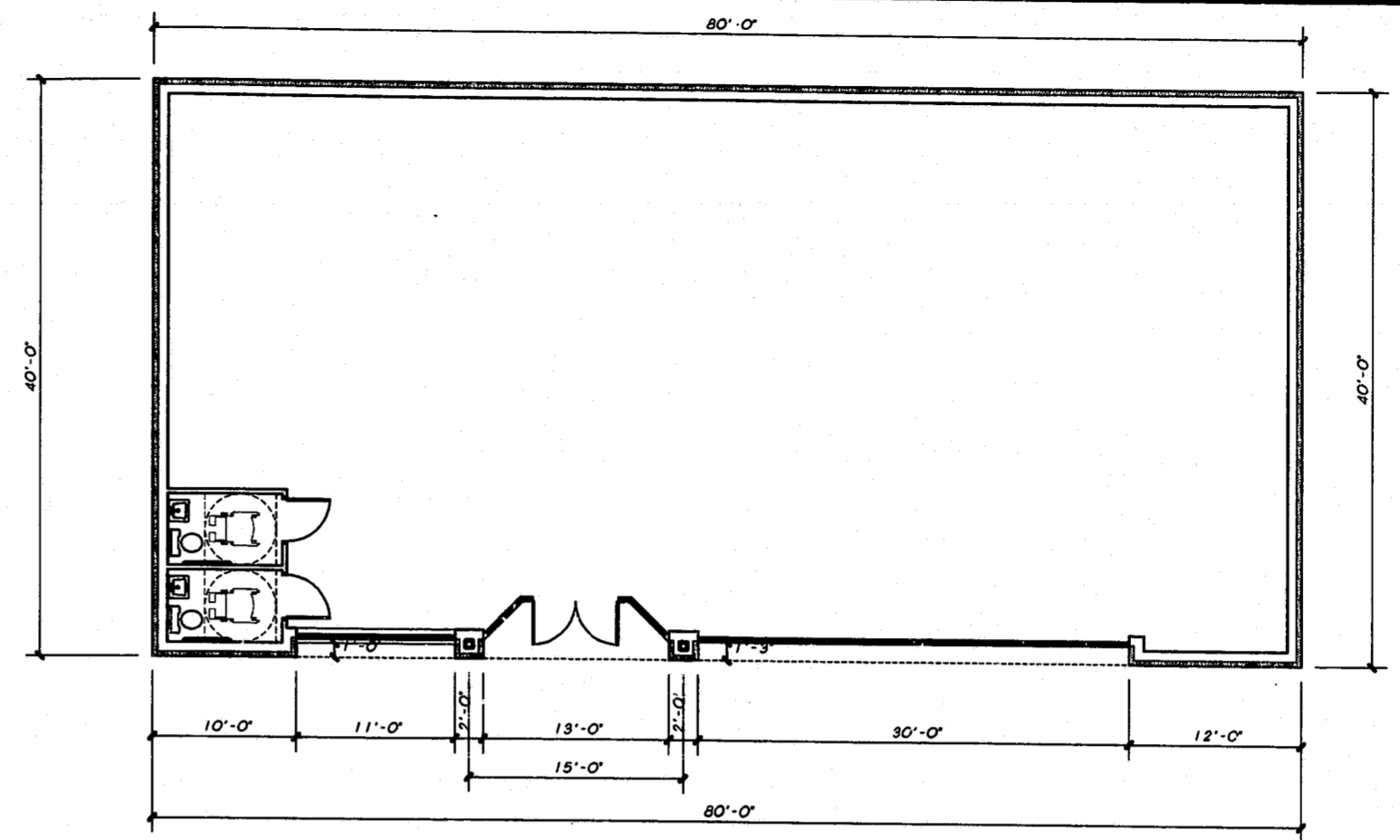
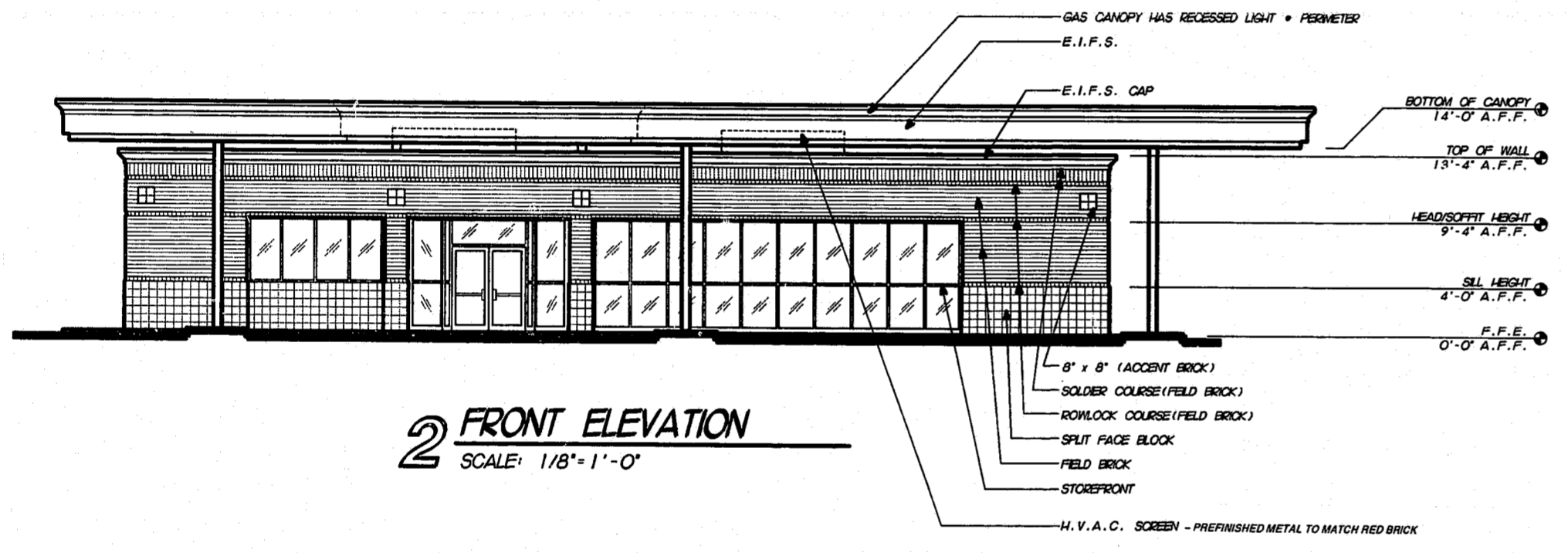


DEVELOPMENT MATERIALS & COLORS

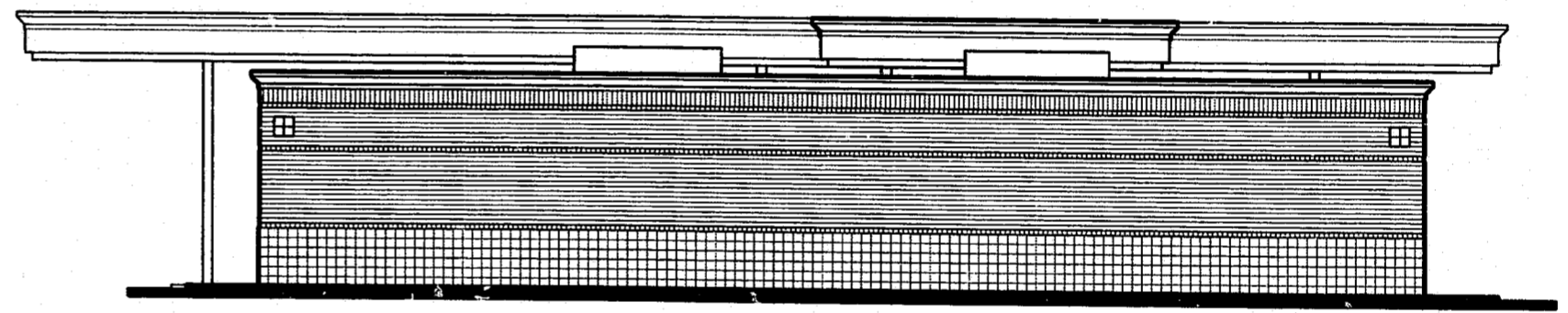
FIELD BRICK - RED BRICK (WIRECUT)
 ACCENT BRICK - BURGUNDY
 EIFS - CREME
 SPLIT FACE BLOCK - CREME
 TILE ACCENTS - DARK GREEN OR BURGUNDY
 CANVAS AWNINGS - DARK GREEN, BURGUNDY OR DARK GREEN/BURGUNDY STRIPE
 STOREFRONT - CLEAR ANODIZED ALUMINUM
 METAL ROOFING - DARK GREEN
 HM DOORS / OH DOORS - DARK GREEN



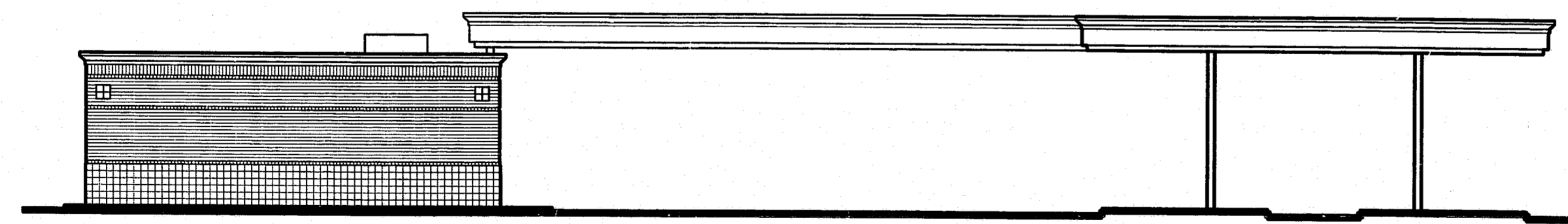
1 FLOOR PLAN
 SCALE: 1/8" = 1'-0"



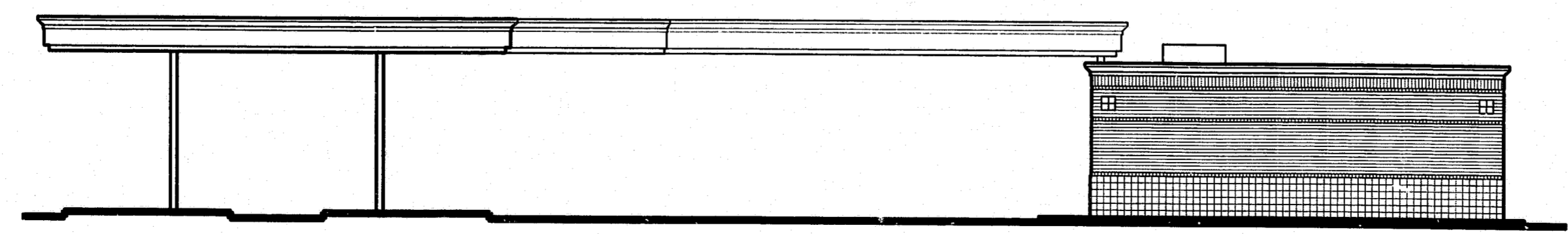
2 FRONT ELEVATION
 SCALE: 1/8" = 1'-0"



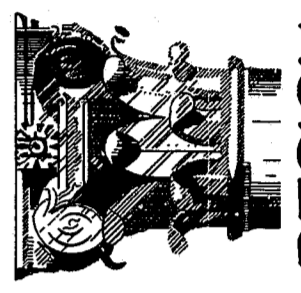
3 REAR ELEVATION
 SCALE: 1/8" = 1'-0"



4 LEFT SIDE ELEVATION
 SCALE: 1/8" = 1'-0"



5 RIGHT SIDE ELEVATION
 SCALE: 1/8" = 1'-0"



DESIGN DEVELOPMENT
 1100 LOSER COURT, SUITE A103
 RALEIGH, NC 27608
 919.878.3690 FAX 919.876.3818

PROJECT:
GAS / C-STORE
BUILDING 3
FOR WEST PARK PLACE
 HIGH HOUSE RD & NC HWY 55
 CARY, NC

TYPE VI, UNSPR
 BUSINESS
 3,200 S.F.

DATE	REVISION

PROJECT #:
 960071
 DATE:
 NOV. 19, 1997
 DRAWN BY/CHECKED BY:
 JEB /
 SHEET TITLE:

SHEET:
GC-A1

NOT RELEASED FOR CONSTRUCTION