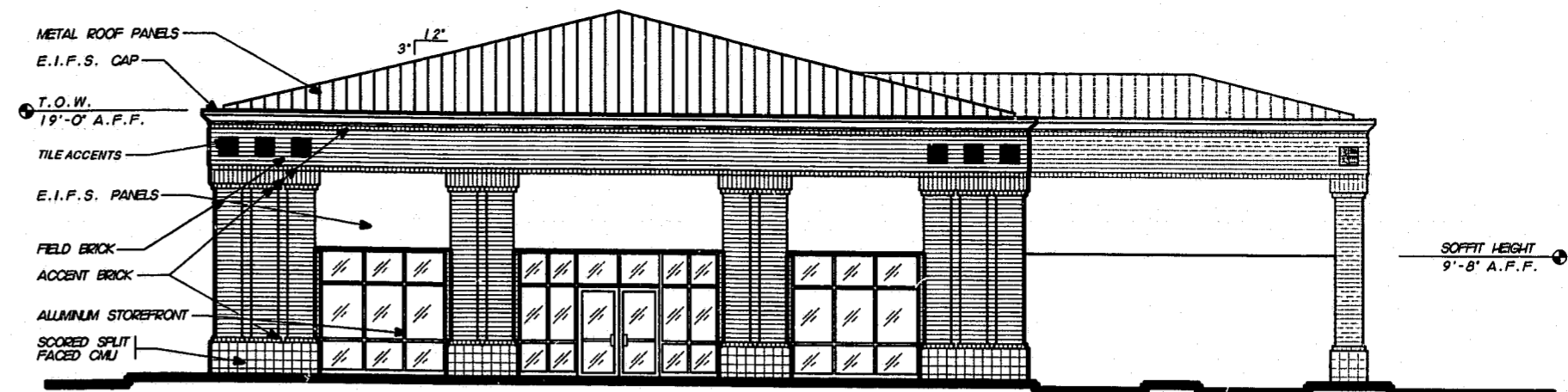
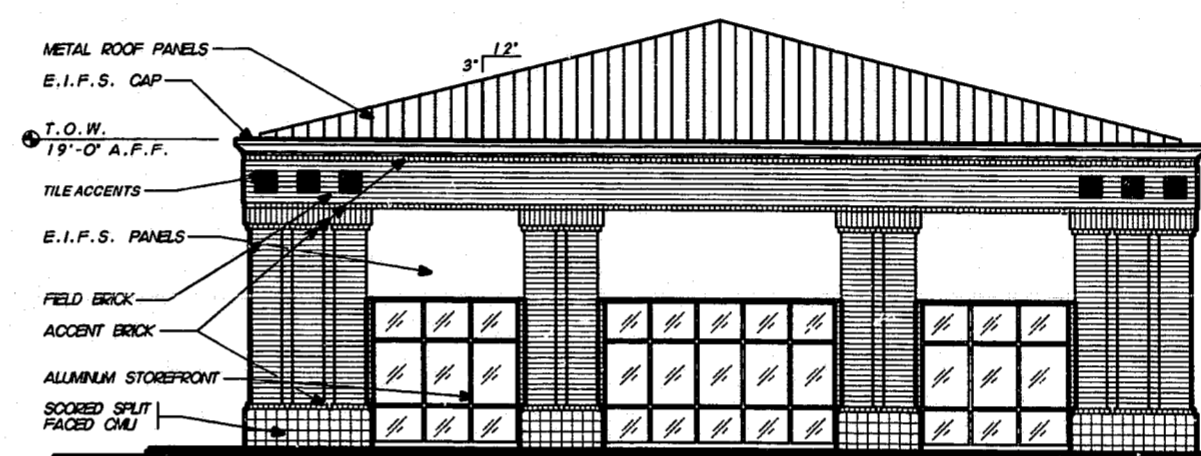


1 FLOOR PLAN
SCALE: 1/8"=1'-0"



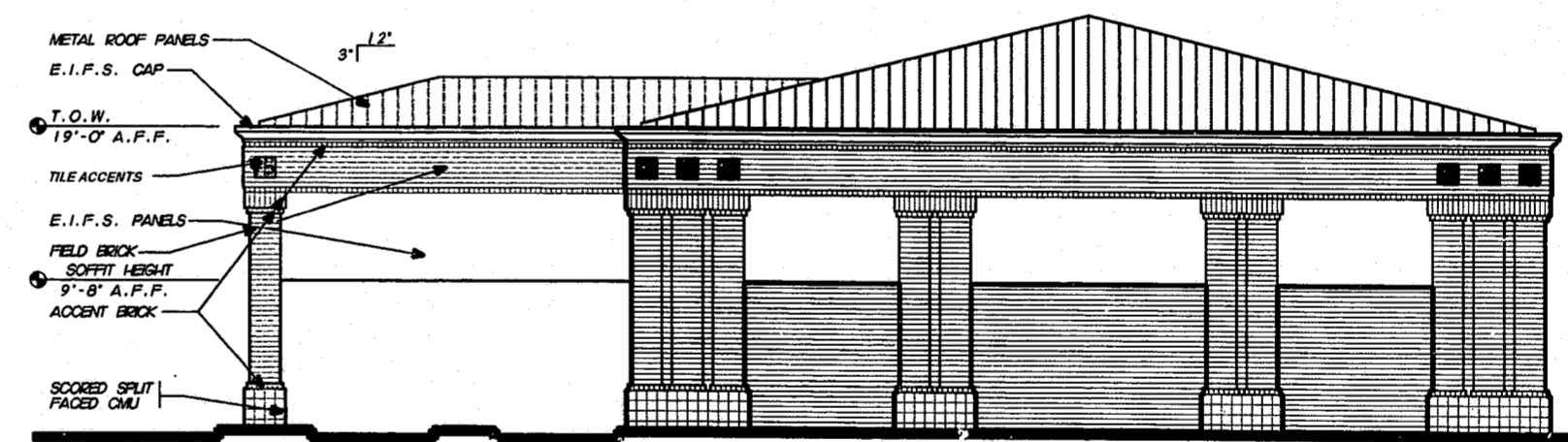
2 FRONT ELEVATION
SCALE: 1/8"=1'-0"



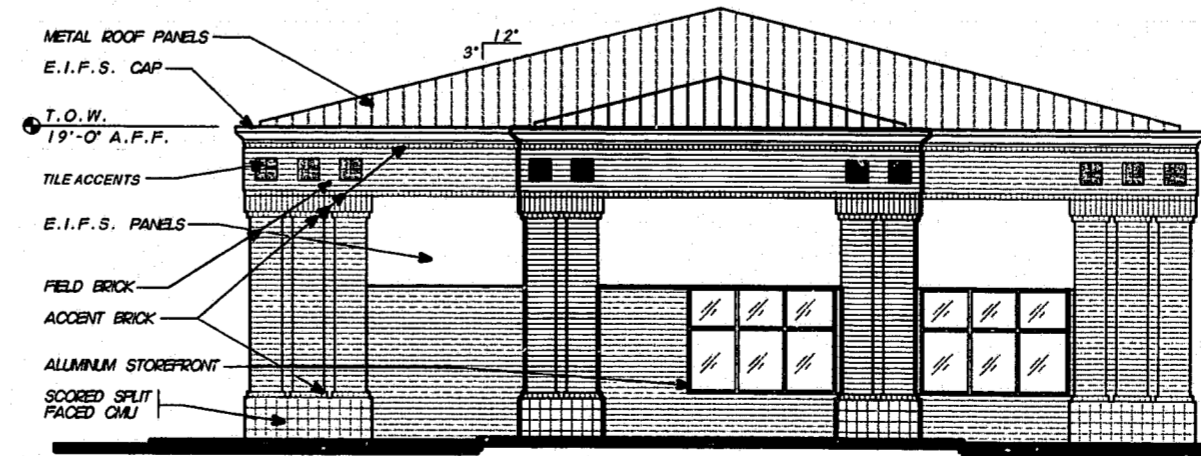
3 LEFT ELEVATION
SCALE: 1/8"=1'-0"

DEVELOPMENT MATERIALS & COLORS

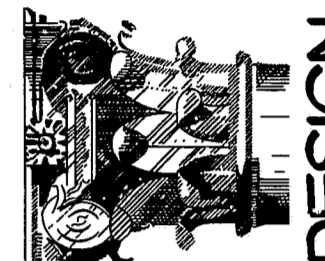
- FIELD BRICK - RED BRICK (WIRECUT)
- ACCENT BRICK - BURGUNDY
- E.F.S. - CREME
- SPLIT FACE BLOCK - CREME
- TILE ACCENTS - DARK GREEN OR BURGUNDY
- CANVAS AWNINGS - DARK GREEN, BURGUNDY OR DARK GREEN/BURGUNDY STRIPE
- STOREFRONT - CLEAR ANODIZED ALUMINUM
- METAL ROOFING - DARK GREEN
- HM DOORS / OH DOORS - DARK GREEN



4 REAR ELEVATION
SCALE: 1/8"=1'-0"



5 RIGHT ELEVATION
SCALE: 1/8"=1'-0"



DESIGN DEVELOPMENT
100 JOSEPH COLLET, SUITE A 103
RALEIGH, NORTH CAROLINA 27609
919.876.3690 FAX 919.876.3618

PROJECT:
BANK BUILDING 5 FOR WEST PARK PLACE
HIGH HOUSE RD & NC HWY 55
CARY, NC

TYPE VI, UNSPR
BUSINESS
3,600 S.F.

DATE	REVISION

PROJECT #:
960071
DATE:
NOV. 19, 1997
DRAWN BY/CHECKED BY:
JEB /
SHEET TITLE:

SHEET:
BK-A1

NOT RELEASED FOR CONSTRUCTION