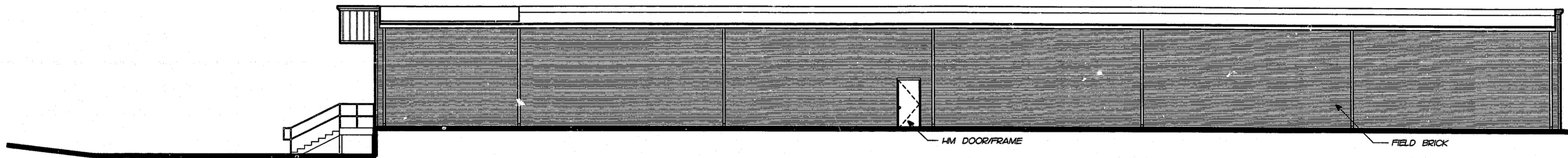
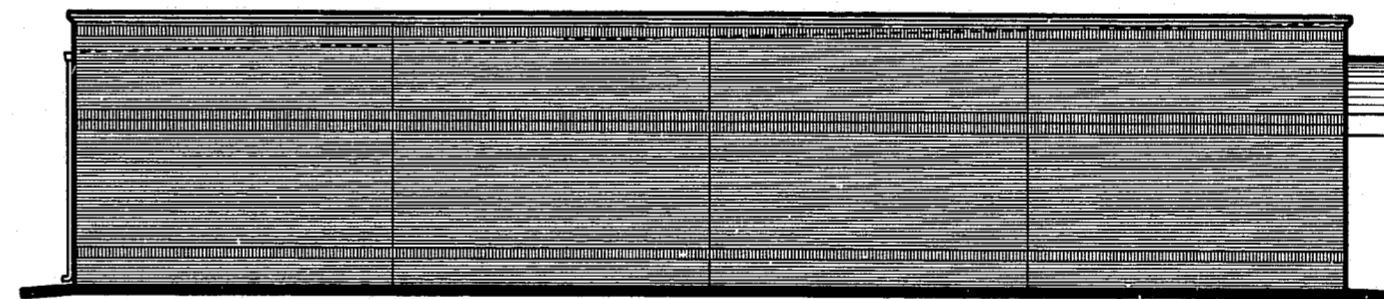


1 FRONT ELEVATION
SCALE: 1/8"=1'-0"

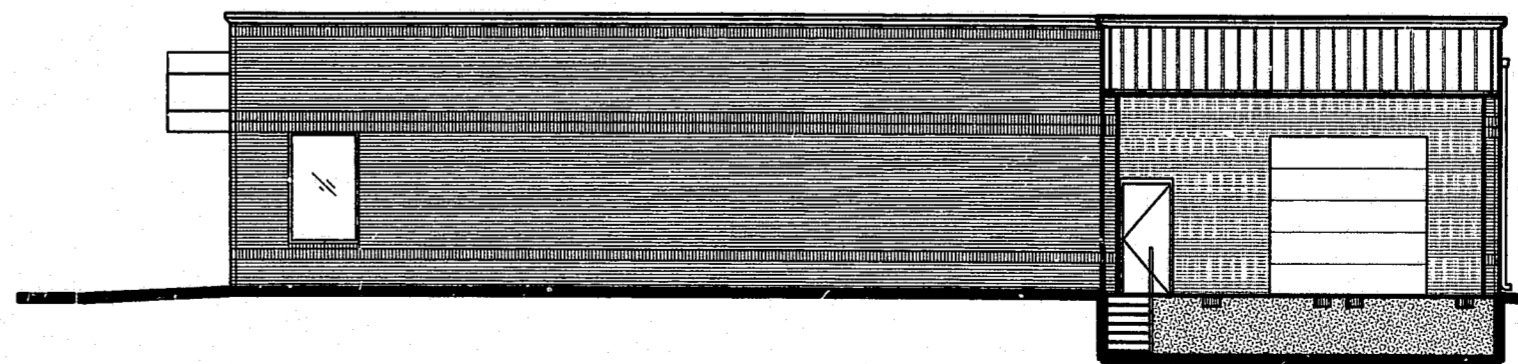


2 REAR ELEVATION
SCALE: 1/8"=1'-0"

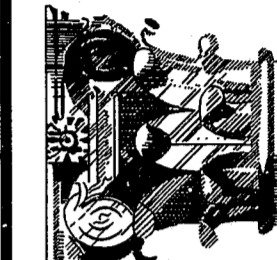
DEVELOPMENT MATERIALS & COLORS	
FIELD BRICK -	RED BRICK (WIRECUT)
ACCENT BRICK -	BURGUNDY
EIFS -	CREME
SPLIT FACE BLOCK -	CREME
TILE ACCENTS -	DARK GREEN OR BURGUNDY
CANVAS AWNINGS -	DARK GREEN, BURGUNDY OR DARK GREEN/BURGUNDY STRIPE
STOREFRONT -	CLEAR ANODIZED ALUMINUM
METAL ROOFING -	DARK GREEN
HM DOORS / OH DOORS -	DARK GREEN
METAL DOWNSPOUTS -	PAINTED TO MATCH RED BRICK



3 LEFT ELEVATION
SCALE: 1/8"=1'-0"



4 RIGHT ELEVATION
SCALE: 1/8"=1'-0"



DESIGN DEVELOPMENT
1100 LOGGERS COURT, SUITE A105
RALEIGH, NORTH CAROLINA 27609
919.878.3690 FAX 919.876.3618

PROJECT:
**GOODWILL INDUSTRIES
BUILDING 6
FOR WEST PARK PLACE**
HIGH HOUSE RD & NC HWY 55
CARY, NC

TYPE VI, UNSPR
BUSINESS
12,500 S.F.

DATE	REVISION

PROJECT #: 960071
DATE: NOV. 19, 1997
DRAWN BY/CHECKED BY: JEB /
SHEET TITLE:

SHEET:
GW-A2

NOT RELEASED FOR CONSTRUCTION