



FreemanWhite

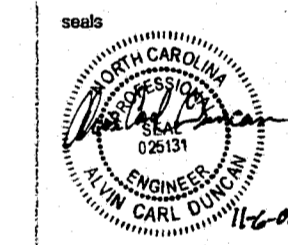
Western Wake Medical Center

Parking Garage

Cary, NC

SITE EXISTING CONDITIONS AND DEMOLITION PLAN

project number
1541941
date
6 NOV 2000



FINAL DESIGN
NOT RELEASED FOR CONSTRUCTION

© 2000 by FreemanWhite, Inc.
drawn by
JMN/TML
checked by
ACD

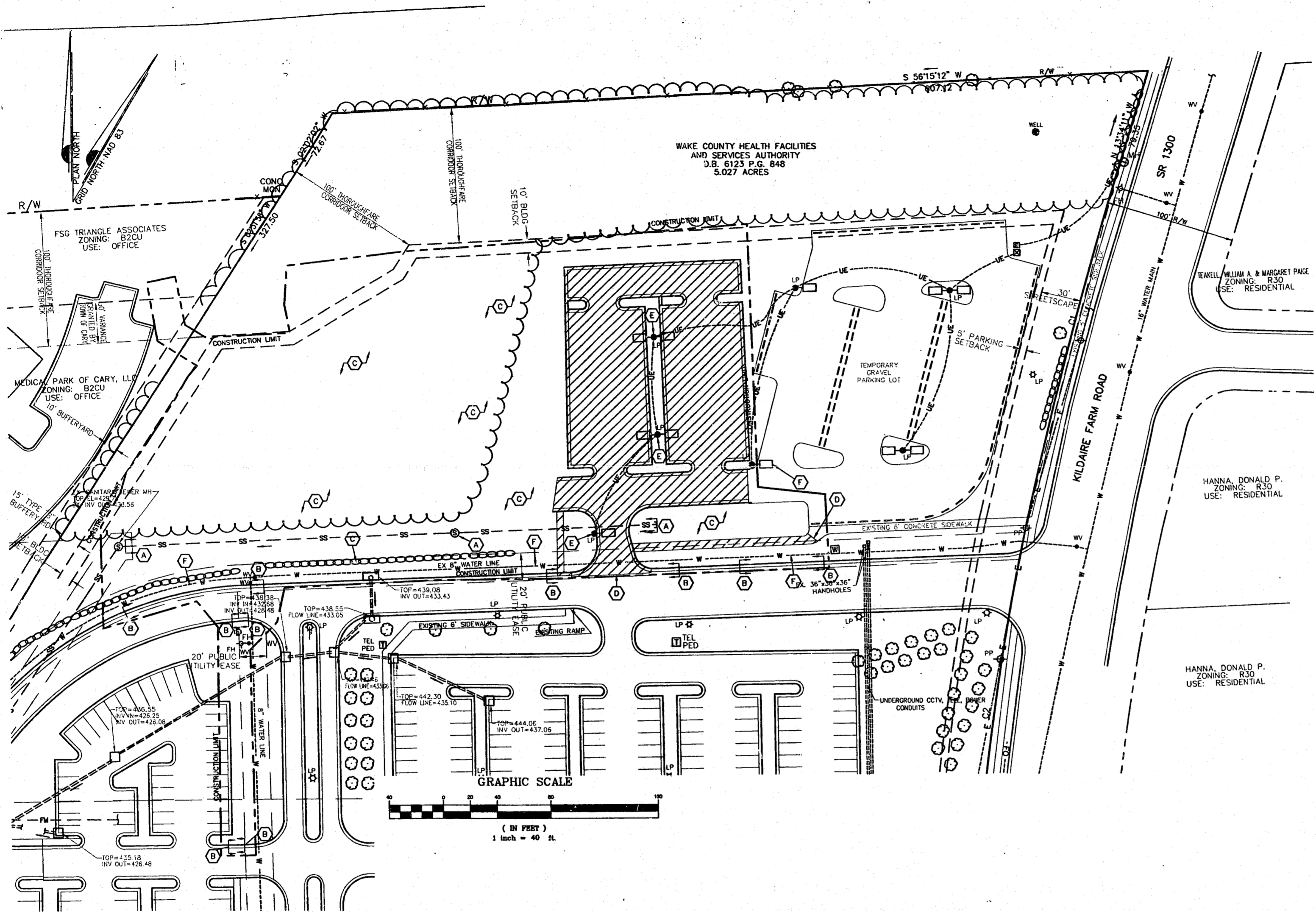
revisions
[]
[]
[]
[]
[]

cpr number
date
includes sheets
[]
[]
[]
[]

THIS DRAWING REPRESENTS ALL CHANGES INCORPORATED INTO THIS DESIGN. ANY CHANGES MADE TO THIS DESIGN AFTER THE DATE OF THIS DRAWING WILL BE THE RESPONSIBILITY OF THE USER. THE USER SHALL BE RESPONSIBLE FOR VERIFYING THE ACCURACY OF ALL INFORMATION PROVIDED BY THE USER. THE USER SHALL BE RESPONSIBLE FOR OBTAINING ALL NECESSARY PERMITS AND APPROVALS FROM ALL APPLICABLE AGENCIES.

sheet number

C1.1



KEY NOTES

- (A) EXISTING STRUCTURE/UTILITY TO BE REMOVED.
- (B) EXISTING CURB AND GUTTER TO BE REMOVED.
- (C) CLEAR AND GRUB SITE WITHIN CONSTRUCTION LIMITS AS REQUIRED.
- (D) SAW CUT EXISTING PAVEMENT, CURB AND GUTTER, SIDEWALK TO PROVIDE STRAIGHT AND UNIFORM LINE.
- (E) EXISTING LIGHTPOLE AND HEADS TO BE SALVAGED AND REUSED AS DIRECTED BY THE OWNER. SEE SITE UTILITY PLAN.
- [Hatched Area] ASPHALT, SIDEWALK, CONCRETE PADS, AND/OR CURB AND GUTTER TO BE REMOVED.

GENERAL NOTES

1. ALL UTILITIES OR STRUCTURES NOT DESIGNATED FOR REMOVAL OR MODIFICATION ARE TO REMAIN.
2. ALL DEMOLITION WORK SHALL BE PERFORMED WITH "DUE CARE AND DILIGENCE" SO AS TO PREVENT THE ARBITRARY DESTRUCTION OR INTERRUPTION OF CONCEALED UTILITIES WHICH ARE INTENDED TO REMAIN IN USE AND THE ROUTING OF WHICH COULD NOT BE PREDETERMINED UNTIL DEMOLITION WAS STARTED. ALL SUCH DISCOVERIES OF UTILITIES DURING THE DEMOLITION PROCESS WHICH ARE IN A LOCATION DIFFERENT FROM THAT INDICATED, CHANGE IN DIRECTION FROM FLOOR TO FLOOR, ETC., OR ARE UNIDENTIFIED, SHALL BE REPORTED TO THE ARCHITECT/ENGINEER BEFORE REMOVAL FOR FINAL DISPOSITION.
3. ALL WASTE MATERIAL GENERATED FROM DEMOLITION WORK SHALL BE DISPOSED OF OFF SITE IN ACCORDANCE WITH GOVERNMENT REGULATIONS.
4. SALVAGEABLE FILL MATERIALS FROM SITE DEMOLITION DETERMINED TO BE ACCEPTABLE BY AN INDEPENDENT SOILS TESTING LABORATORY SHALL BE UTILIZED FOR FILL MATERIAL WHERE APPROPRIATE.
5. ANY NOTE, OR REFERENCE TO ANY ELEMENT, WHICH DOES NOT SPECIFY ACTION BY THE CONTRACTOR SHALL BE CONSTRUED AS INFORMATION ONLY.
6. CLEAR AND GRUB ALL AREAS TO RECEIVE PAVEMENT/STRUCTURES AS REQUIRED BY SPECS.
7. ALL STRUCTURES/UTILITIES DESIGNATED FOR MODIFICATION SHALL BE PROTECTED BY THE CONTRACTOR DURING CONSTRUCTION.

DSAtlantic

180 OAK PLAZA BOULEVARD • SUITE 200 • WINSTON-SALEM, NC 27106
336-758-7400 • FAX 336-758-7000

CHARLOTTE, NC • COLUMBIA, SC • MACON, GA • NASHVILLE, TN
BALTIMORE, MD • RICHMOND, VA • REXFORD-SALEM, NC
DSAtlantic CADD #: G:\MCC053\000\CIVIL\B33CBASE