

**CURVE TABLE**

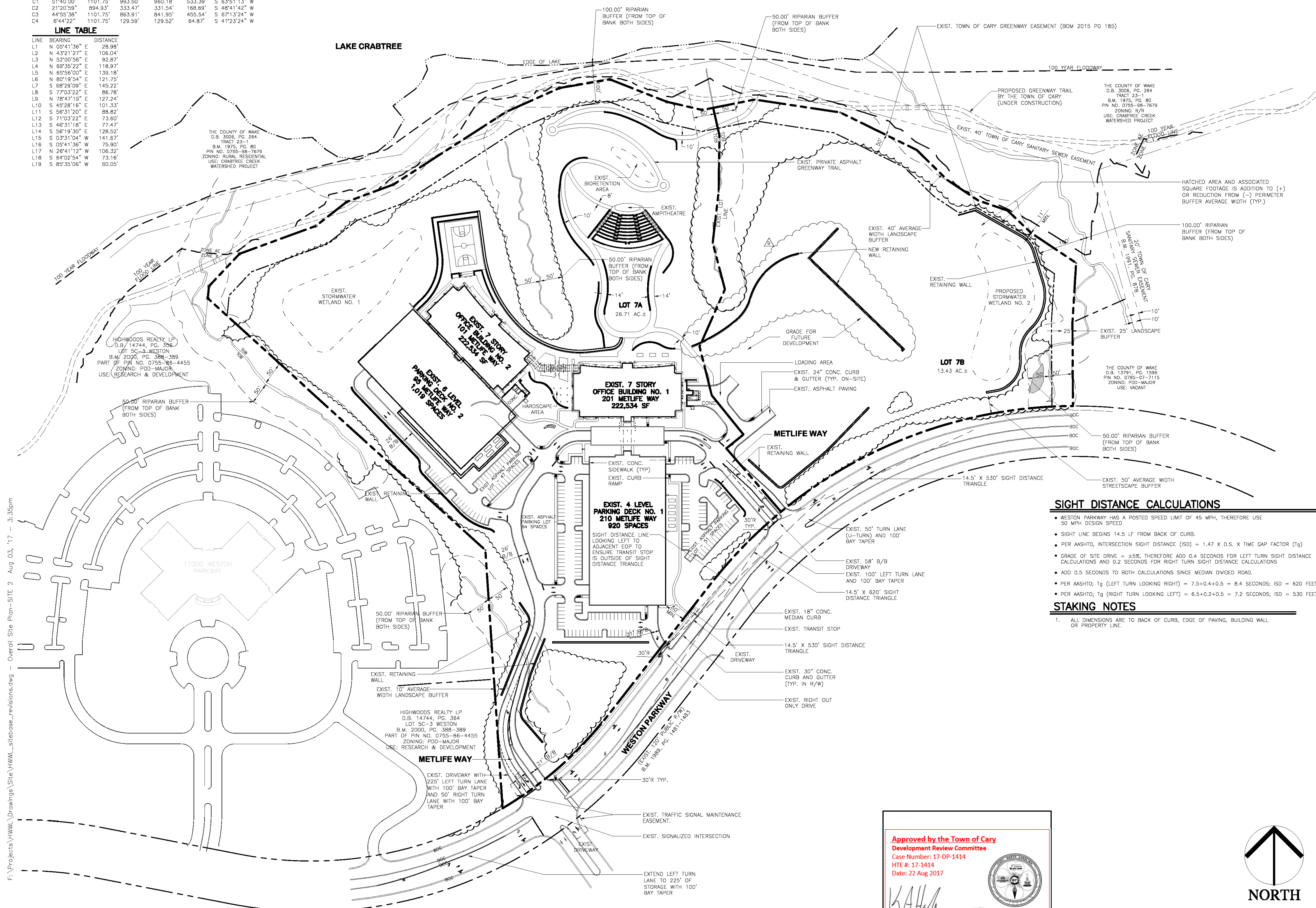
CURVE	DELTA ANG.	RADIUS	ARC LEN.	CHORD LEN.	TANGENT	CHORD BRG.
C1	51°40'00"	1101.75'	993.50'	960.18'	533.39'	S 63°51'13" W
C2	21°20'59"	894.93'	333.47'	331.54'	168.69'	S 48°41'42" W
C3	44°55'38"	1101.75'	863.91'	841.95'	450.54'	S 67°13'24" W
C4	6°44'22"	1101.75'	129.59'	129.52'	64.87'	S 41°23'24" W

**LINE TABLE**

LINE	BEARING	DISTANCE
L1	N 05°41'36" E	28.98'
L2	N 43°21'27" E	106.04'
L3	N 52°00'56" E	92.87'
L4	N 69°35'22" E	118.97'
L5	N 65°56'00" E	139.18'
L6	N 80°19'54" E	121.75'
L7	S 68°29'09" E	145.22'
L8	S 77°03'22" E	86.78'
L9	N 78°42'19" E	127.24'
L10	S 45°28'16" E	101.33'
L11	S 56°31'20" E	88.82'
L12	S 71°03'22" E	73.60'
L13	S 46°31'18" E	77.47'
L14	S 58°19'30" E	128.52'
L15	S 03°31'04" W	141.67'
L16	S 05°41'36" W	75.90'
L17	N 26°41'12" W	106.32'
L18	S 64°02'54" W	73.16'
L19	S 85°35'06" W	60.05'

LAKE CRABTREE



**SIGHT DISTANCE CALCULATIONS**

- WESTON PARKWAY HAS A POSTED SPEED LIMIT OF 45 MPH, THEREFORE USE 50 MPH DESIGN SPEED.
- SIGHT LINE BEGINS 14.5 LF FROM BACK OF CURB.
- PER AASHTO, INTERSECTION SIGHT DISTANCE (ISD) = 1.47 X D.S. X TIME GAP FACTOR (Tg)
- GRADE OF SITE DRIVE = ±5%, THEREFORE ADD 0.4 SECONDS FOR LEFT TURN SIGHT DISTANCE CALCULATIONS AND 0.2 SECONDS FOR RIGHT TURN SIGHT DISTANCE CALCULATIONS
- ADD 0.5 SECONDS TO BOTH CALCULATIONS SINCE MEDIAN DIVIDED ROAD.
- PER AASHTO; Tg (LEFT TURN LOOKING RIGHT) = 7.5+0.4+0.5 = 8.4 SECONDS; ISD = 620 FEET
- PER AASHTO; Tg (RIGHT TURN LOOKING LEFT) = 6.5+0.2+0.5 = 7.2 SECONDS; ISD = 530 FEET

**STAKING NOTES**

1. ALL DIMENSIONS ARE TO BACK OF CURB, EDGE OF PAVING, BUILDING WALL OR PROPERTY LINE.

Approved by the Town of Cary  
 Development Review Committee  
 Case Number: 17-DP-1414  
 HTE #: 17-1414  
 Date: 22 Aug 2017



SCALE: 1" = 100'  
 REFER TO DWG. NO. SITE 1 FOR GENERAL NOTES

**PLD**

PIEDMONT LAND DESIGN, LLP  
 8522-204 SIX FORKS ROAD  
 RALEIGH, NORTH CAROLINA 27615  
 919.845.7600 PHONE  
 919.845.7703 FAX  
 ENGR. FIRM LIC. NO. F-0843



17-DP-1414

WESTON LAKE FRONT  
 WESTON PARKWAY  
 CARY, NORTH CAROLINA

ISSUED: 13 JULY 2017

REVISIONS:

02 AUGUST 2017  
 REVISE PER TOWN COMMENTS

DRAWN BY: EMH  
 CHECKED BY: RPH  
 PROJECT: HWWL

OVERALL SITE PLAN

DWG. NO. SITE 2

F:\Projects\HWWL\Drawings\Site\HWWL\_sitebase\_revisions.dwg - Overall Site Plan-SITE 2 Aug 03, '17 - 3:35pm