



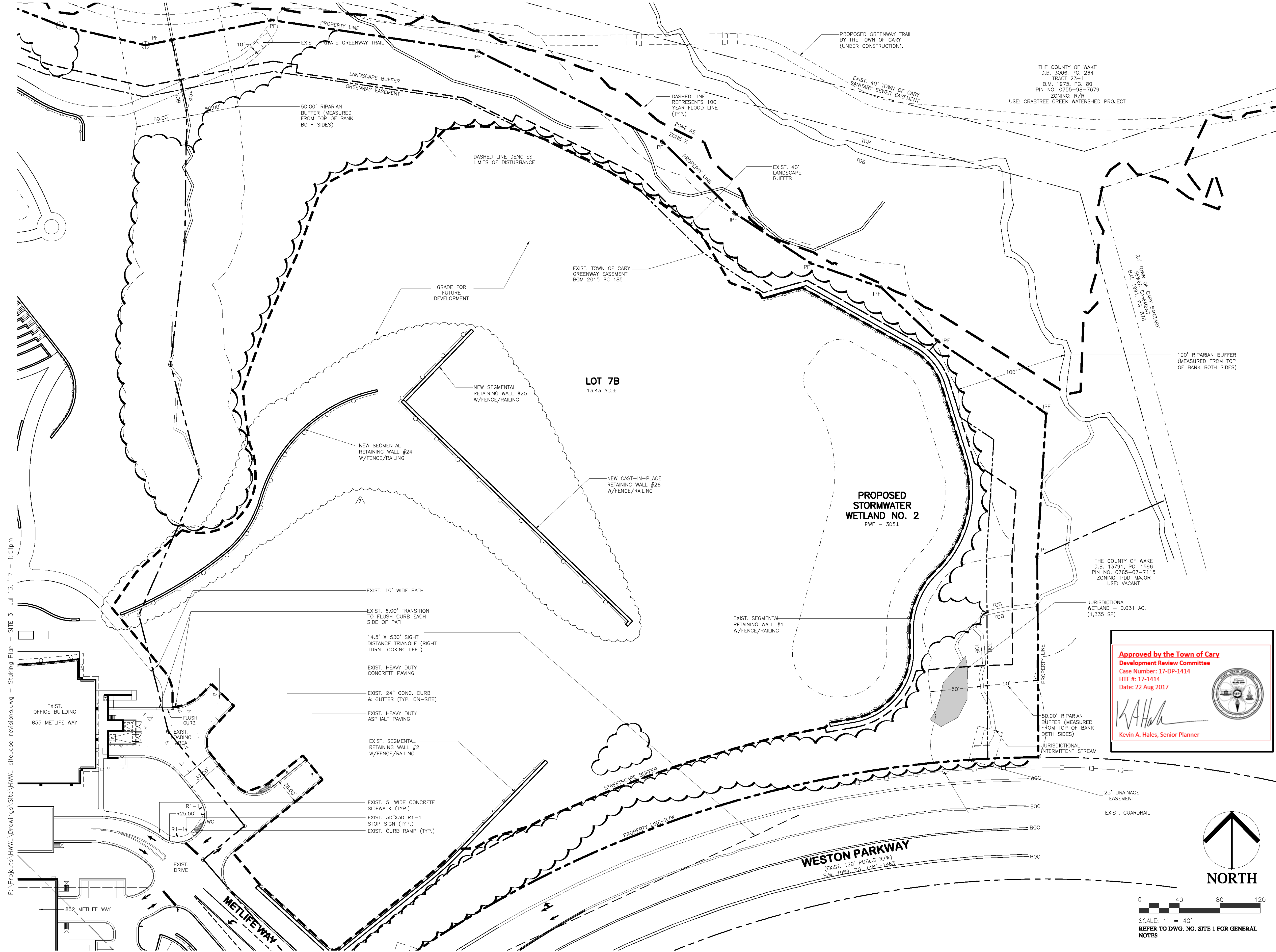
17-DP-1414

**WESTON LAKE FRONT**  
**WESTON PARKWAY**  
**CARY, NORTH CAROLINA**

ISSUED: 13 JULY 2017

REVISIONS:


DRAWN BY: EMH  
 CHECKED BY: RPH  
 PROJECT: HWWL  
**STAKING PLAN**  
 DWG. NO. **SITE 3**



THE COUNTY OF WAKE  
 D.B. 3006, PG. 264  
 TRACT 23-1  
 B.M. 1979, PG. 80  
 PIN NO. 0755-98-7679  
 ZONING: R/R  
 USE: CRABTREE CREEK WATERSHED PROJECT

THE COUNTY OF WAKE  
 D.B. 13791, PG. 1596  
 PIN NO. 0765-07-7115  
 ZONING: PDD-MAJOR  
 USE: VACANT

**Approved by the Town of Cary**  
**Development Review Committee**  
 Case Number: 17-DP-1414  
 HTE #: 17-1414  
 Date: 22 Aug 2017

Kevin A. Hales, Senior Planner

F:\Projects\HWWL Drawings\Site\HWWL\_sitabase\_revisions.dwg - Staking Plan - SITE 3 Jul 13, '17 - 1:51pm



0 40 80 120  
 SCALE: 1" = 40'  
 REFER TO DWG. NO. SITE 1 FOR GENERAL NOTES