

17-DP-1414

**WESTON LAKE FRONT**  
**WESTON PARKWAY**  
**CARY, NORTH CAROLINA**

ISSUED: 13 JULY 2017

REVISIONS:

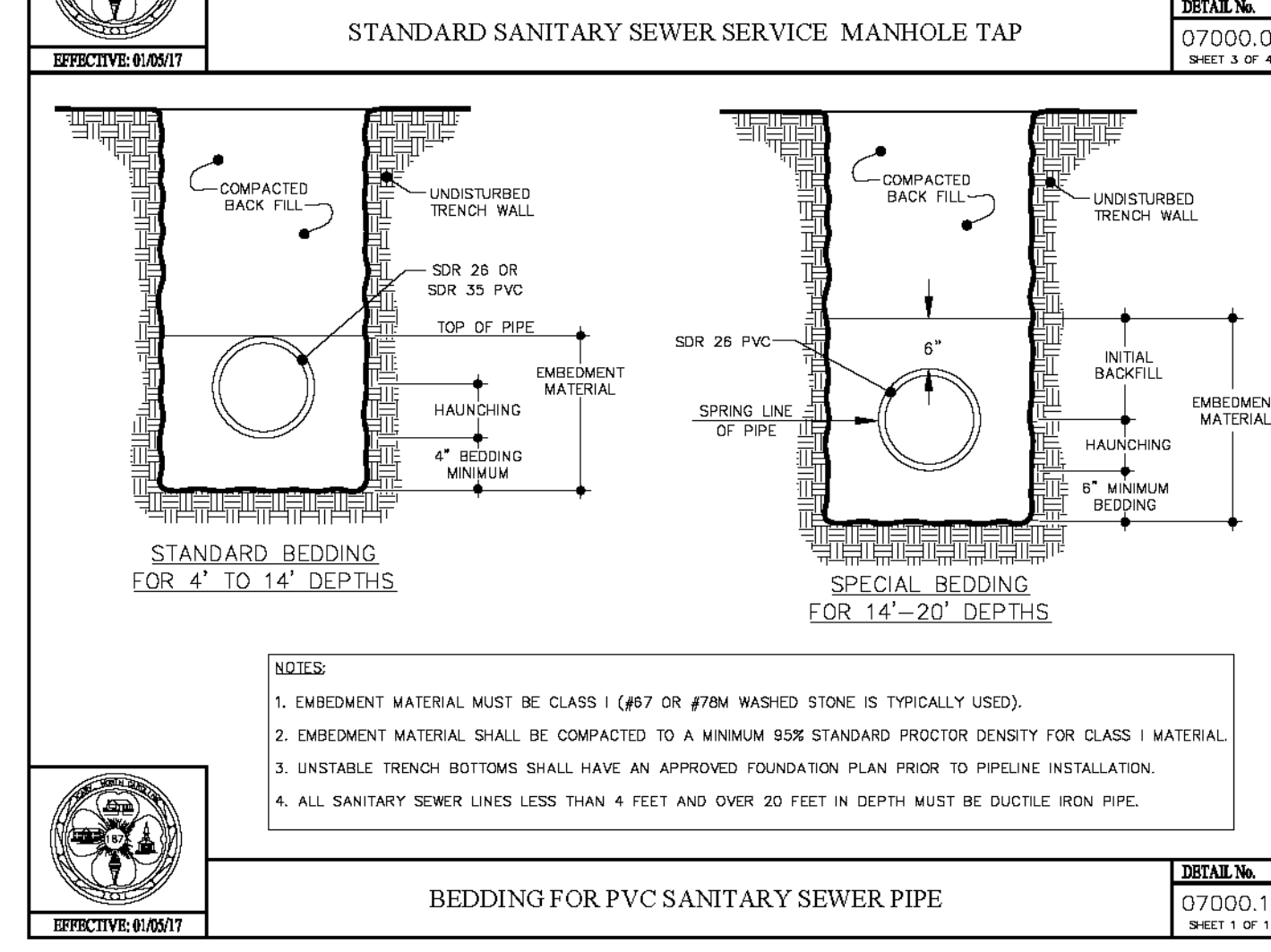
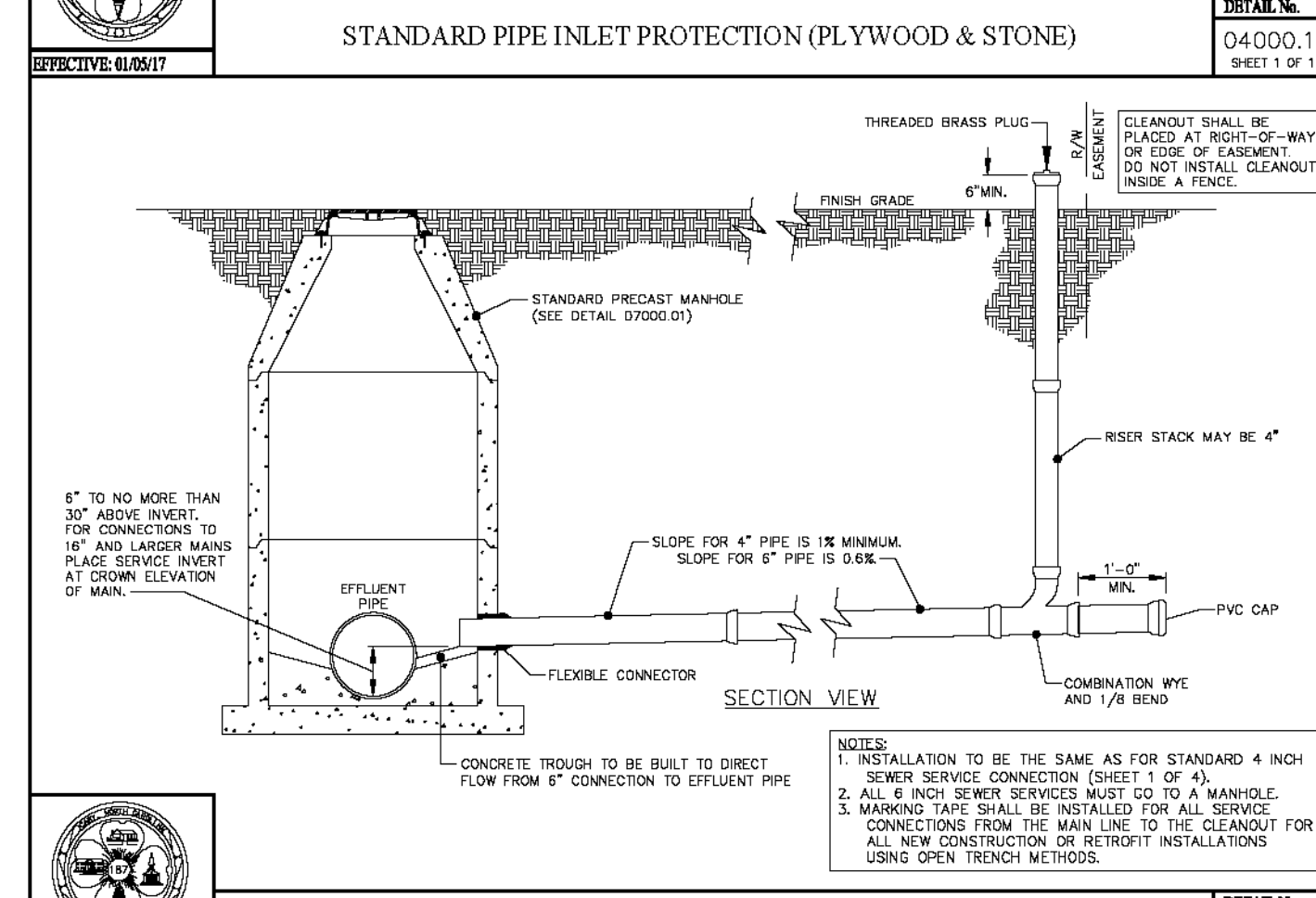
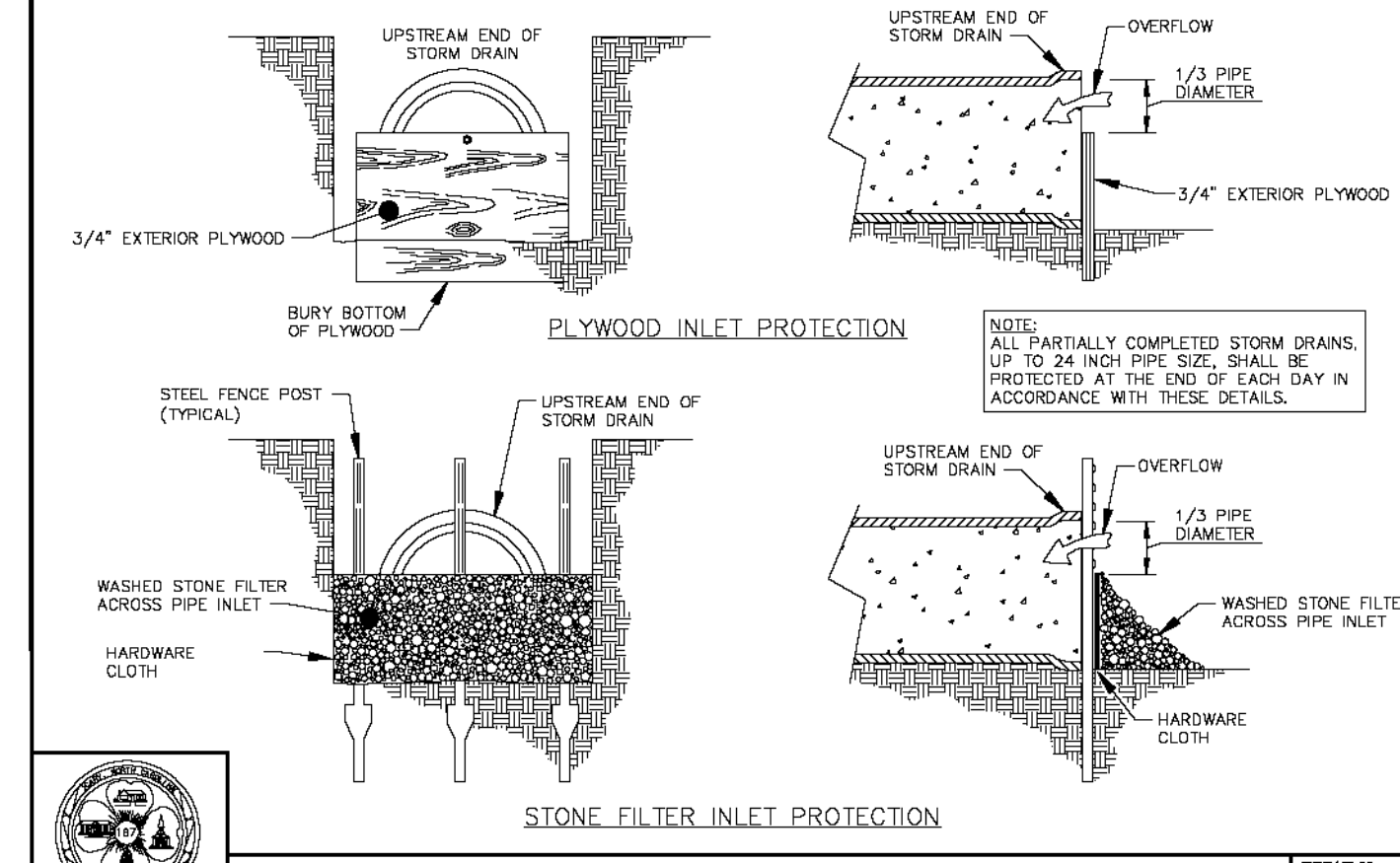
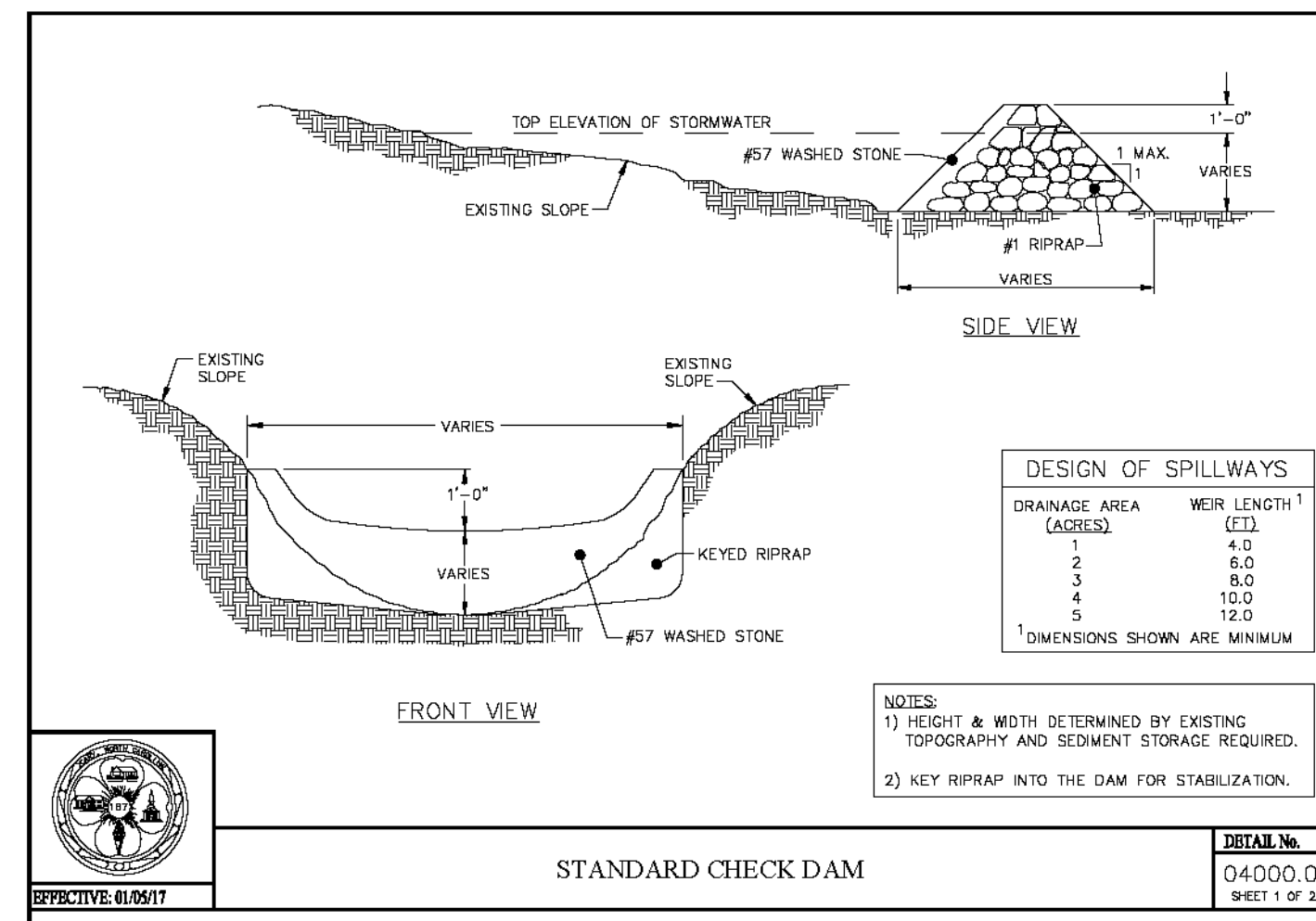
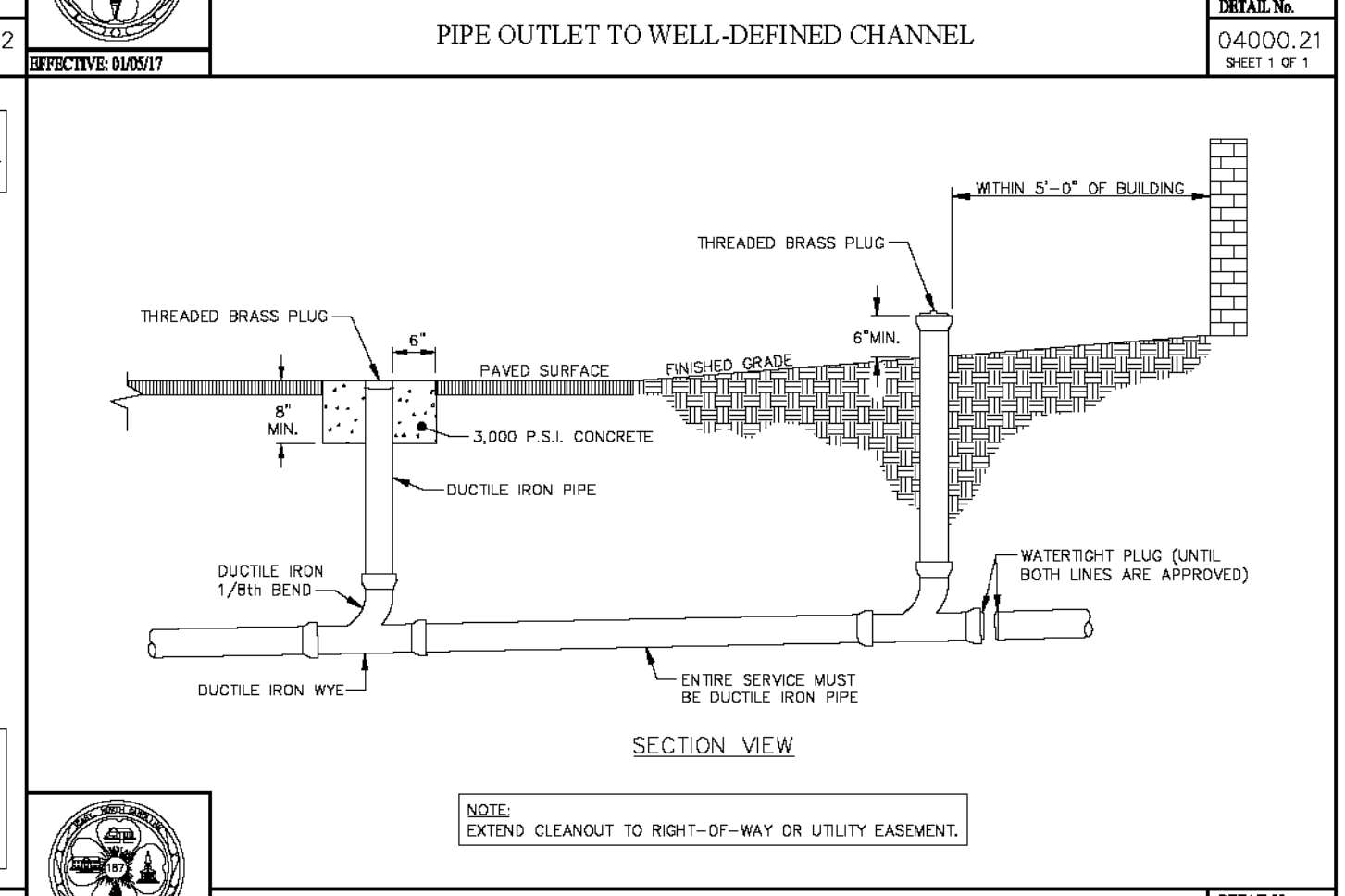
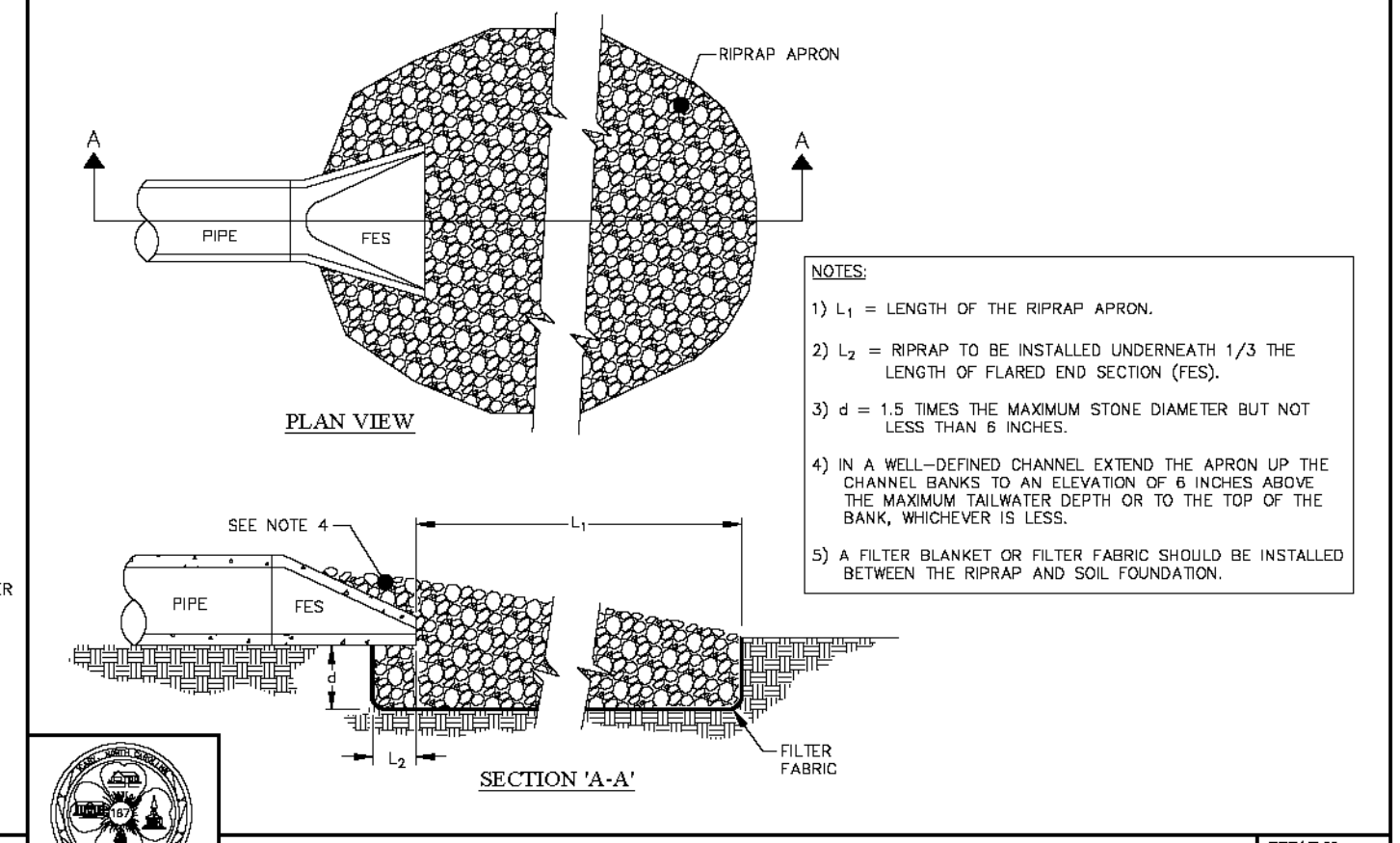
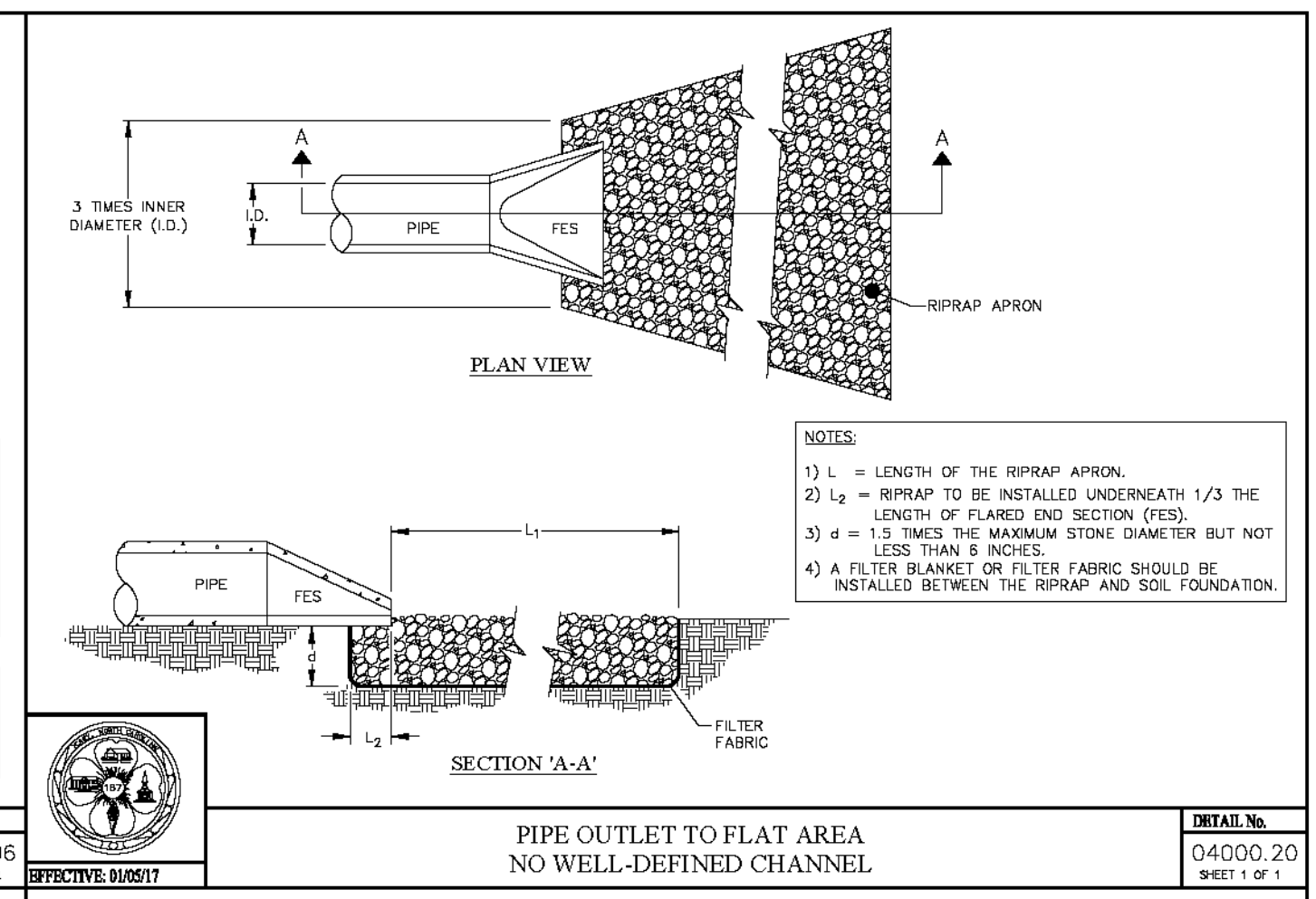
DRAWN BY: EMH  
 CHECKED BY: RPH  
 PROJECT: HWWL

DETAILS

DWG. NO. **SITE 8**

**Approved by the Town of Cary**  
 Development Review Committee  
 Case Number: 17-DP-1414  
 HTE #: 17-1414  
 Date: 22 Aug 2017

Kevin A. Hales, Senior Planner



MARK	INV IN	INV OUT	LENGTH (FT)	SIZE	SLOPE (%)	TOP ELEV	REMARKS
39	308.60(40)	308.50				320.0±(WEIR)	RTCB (FUTURE CI) BOX SPEC. SEE DTL. 8000.03
39-40	313.70(41)		70	15" RCP	0.57		OPENING/SLAB SEE DTL. 8000.01
40		309.00				313.0±(WEIR)	RTCB (FUTURE CI) BOX SPEC. SEE DTL. 8000.03
39-41			105	24" RCP	9.49		OPENING/SLAB SEE DTL. 8000.01
41	325.30	323.70				339.0±(WEIR)	RTCB (FUTURE CI) BOX SPEC. SEE DTL. 8000.03
41-42			267	24" RCP	1.01		OPENING/SLAB SEE DTL. 8000.01
42	328.10	328.00				343.0±(WEIR)	RTCB (FUTURE CI) BOX SPEC. SEE DTL. 8000.03
42-43			116	24" RCP	1.03		OPENING/SLAB SEE DTL. 8000.01
43	330.30(44)	329.30				342.0±(WEIR)	RTCB (FUTURE CI) BOX SPEC. SEE DTL. 8000.03
43-44			46	18" RCP	1.09		OPENING/SLAB SEE DTL. 8000.01
44	330.90	330.80				336.2±(TC)	CI - SEE DTL. 8000.03
44-45			59	18" RCP	2.54		
45	332.80	332.40				337.9±(TC)	CI - SEE DTL. 8000.03
46							NOT USED
45-47			50	15" RCP	9.80		
47	342.10	337.50				347.4±(TC)	CI - SEE DTL. 8000.03
47-48			75	15" RCP	4.53		
48		345.50				350.8±(TC)	CI - SEE DTL. 8000.03
43-49			123	18" RCP	3.74		
49	340.90	340.20				346.0±(TC)	CI - SEE DTL. 8000.03
49-50			40	18" RCP	2.75		
50	342.40	342.00				349.5±(TC)	CI - SEE DTL. 8000.03
50-51			74	18" RCP	1.22		
51	345.00(52)	343.30				350.5±(TC)	CI - SEE DTL. 8000.03
51-52			32	15" RCP	1.25		
52		345.40				350.5±(TC)	CI - SEE DTL. 8000.03
51-53			71	15" RCP	1.13		
53	344.70	344.60				349.7±(TC)	CI - SEE DTL. 8000.03
53-54			106	15" RCP	2.17		
54	347.20	347.00				351.8±	DI - SEE DTL. 8000.02
54-55							NOT USED
55							NOT USED
56		285.00					FES
56-57			49	18" RCP	2.04		
57	286.00	286.20					FES
58-59			62	15" RCP	2.90		
59	292.50	288.00				297.5±	MH/JB - SEE DTL. 8000.05
59-60			176	15" RCP	9.66		
60	312.50	309.50				320.0±	DI - SEE DTL. SITE 4.05
61	319.00						FES
61-62			35	15" RCP	1.14		
62	319.60	319.40				322.5±	DI - SEE DTL. 8000.02
62-63			138	12" RCP	9.71		
63	338.30	333.00				341.8±	DI - SEE DTL. 8000.02
63-64			71	12" RCP	6.62		
64	343.90	343.00				347.6±	DI - SEE DTL. 8000.02
64-65			66	12" RCP	1.06		
65		344.60				347.6±	DI - SEE DTL. 8000.02

NOTES:  
 \*THE LENGTHS PROVIDED IN THIS SCHEDULE ARE MEASURED TO THE END OF FLARED END SECTIONS. CONTRACTOR SHALL ADJUST LENGTH OF RCP TO ACCOUNT FOR THE LENGTH OF FLARED END SECTIONS.  
 ALL INLETS BETWEEN 5' AND 20' DEEP SHALL HAVE MINIMUM INTERIOR DIMENSIONS OF 4' BY 4'. INLETS OVER 20' DEEP SHALL HAVE A MINIMUM INTERIOR DIMENSION OF 5' BY 5'.  
 PIPES SHALL NOT PROJECT INTO A DRAINAGE STRUCTURE. PIPES SHALL BE FINISHED FLUSH WITH THE INSIDE OF THE STRUCTURE.  
 ALL STRUCTURES SHALL HAVE A SHAPED INVERT CONSTRUCTED WITH CONCRETE AND A BENCH WITH A MAXIMUM 5:1 SLOPE. THE BENCH SHALL BEGIN AT A HEIGHT OF ONE-HALF THE PIPE DIAMETER FOR 15" TO 24" PIPE, ONE-THIRD THE DIAMETER FOR 30" TO 48" PIPE, AND ONE-QUARTER THE DIAMETER FOR PIPES GREATER THAN 48".

NO.	DESCRIPTION	MAX. BOTTOM SLOPE	MAX. SIDE SLOPE	LINING
1	2' TRAPEZOIDAL	2.0%	3:1	NAG S75 TO 0.5" DEPTH OF FLOW
2	4' TRAPEZOIDAL	5.0%	3:1	NAG S75 TO 0.5" DEPTH OF FLOW
3	4' TRAPEZOIDAL	2.0%	3:1	NAG S75 TO 0.5" DEPTH OF FLOW
4	4' TRAPEZOIDAL	2.0%	3:1	NAG S75 TO 0.5" DEPTH OF FLOW
5	4' TRAPEZOIDAL	5.0%	3:1	NAG S75 TO 0.5" DEPTH OF FLOW
6	4' TRAPEZOIDAL	8.0%	3:1	NAG S75 TO 0.5" DEPTH OF FLOW
7	4' TRAPEZOIDAL	2.0%	3:1	NAG S75 TO 0.5" DEPTH OF FLOW
8	4' TRAPEZOIDAL	5.0%	3:1	NAG S75 TO 0.5" DEPTH OF FLOW

\* CHANNEL LININGS SHALL BE INSTALLED IN ACCORDANCE WITH MANUFACTURER'S RECOMMENDATIONS.  
 \* NAG - NORTH AMERICAN GREEN  
 \* ALTERNATE MATERIALS ARE ALLOWED SUBJECT TO ENGINEER'S APPROVAL

MARK	LENGTH	WIDTH	THICKNESS	STONE TYPE
FES 1	18"	9"	18"	CL B
FES 4	18"	9"	18"	CL B
FES 32	12"	9"	18"	CL B
FES 34	18"	9"	18"	CL B
FES 36	18"	9"	18"	CL B
FES 56	9"	9"	18"	CL B
FES 58	8"	4"	18"	CL B
FES 61	8"	4"	18"	CL B

MARK	INV IN	INV OUT	LENGTH (FT)	SIZE	SLOPE (%)	TOP ELEV	REMARKS
1		286.70					FES
1-2			55*	36" RCP	1.09		O-RING
2	292.00	287.30				298.0±	MH/JB - SEE DTL. 8000.05
2-3			70	36" RCP	9.93		O-RING
3	SEE DETAIL	299.00				310.0±	JB - SEE DTL. SITE 4.04
4		307.00					FES
4-5			28*	36" RCP	1.08		O-RING
5	310.00(6B)	307.30				314.0±	MH/JB - SEE DTL. 8000.05
5-6B			63	15" RCP	9.52		
6B	344.30(6A)	316.00				349.0±	DI - SEE DTL. 8000.02
	342.00(7)						
6A-6B			69	15" RCP	1.01		
6A		345.00				349.0±	DI - SEE DTL. 8000.02
6B-7			86	15" RCP	9.30		
7		350.00				354.7±	DI - SEE DTL. 8000.02
5-8			127	36" RCP	1.02		O-RING
8	308.90	308.80				316.0±	MH/JB - SEE DTL. 8000.05
8-9A			177	36" RCP	1.02		
9A	315.00(9B)	310.70				319.0±	MH/JB - SEE DTL. 8000.05
	311.60(10)						
9A-10			82	30" RCP	5.43		
9A-9B			36	15" RCP	2.78		
9B	316.50	316.00				322.7±	MH/JB - SEE DTL. 8000.05
10	315.60	315.00				322.0±(TC)	CI - SEE DTL. 8000.03
10-11			118	30" RCP	4.57		
11	321.20	321.00				329.8±(TC)	CI - SEE DTL. 8000.03
11-12			233	30" RCP	5.84		
12	335.40	334.80				347.4±(TC)	CI - SEE DTL. 8000.03
12-13			93	30" RCP	1.08		
13	337.40(14)	336.40				348.5±(TC)	CI - SEE DTL. 8000.03
	341.00(19)						
13-14			47	30" RCP	1.06		
14	338.10	337.90				348.8±(TC)	CI - SEE DTL. 8000.03
14-15			38	30" RCP	1.05		
15	340.30(16)	338.50				348.3±(TC)	CI - SEE DTL. 8000.03
	339.40(26)						
15-16			26	24" RCP	1.15		
16	341.90	340.60				348.3±(TC)	CI - SEE DTL. 8000.03
16-17			82	18" RCP	3.54		
17	346.40(18A)	344.80				351.8±(TC)	CI - SEE DTL. 8000.03
	346.60(18C)						
17-18A			28	18" RCP	1.07		
18A	346.90	348.70				351.8±(TC)	CI - SEE DTL. 8000.03
18A-18B			105	15" RCP	1.05		
18B	348.50	348.00				353.5±	MH/JB - SEE DTL. 8000.05
17-18C			111	15" RCP	1.26		
18C	348.50	348.00				353.5±	MH/JB - SEE DTL. 8000.05
13-19			197	18" RCP	1.78		
19	347.10(19A)	344.50				352.5±(TC)	CI - SEE DTL. 8000.03
	347.30(19B)						
	345.70(20)						
19-19A			26	15" RCP	1.15		
19A		347.40				352.5±(TC)	CI - SEE DTL. 8000.03
19-19B			102	15" RCP	2.45		
19B		349.80				354.7±	MH/JB - SEE DTL. 8000.05
19-20			103	18" RCP	1.07		
20	347.70(21)	346.80				352.7±	DI - SEE DTL. 8000.02
	347.70(22)						
20-21			52	15" RCP	1.15		
21		348.30				352.8±	DI - SEE DTL. 8000.02
20-22			106	15" RCP	2.17		
22	350.20	350.00				354.0±	MH/JB - SEE DTL. 8000.05
23							NOT USED
24							NOT USED
25							NOT USED
15-26			185	24" RCP	1.02		
26	341.50	341.30				351.1±(TC)	CI - SEE DTL. 8000.03
26-27			73	24" RCP	1.37		
27	343.80(28)	342.50				349.5±(TC)	CI - SEE DTL. 8000.03
	343.20(30)						
27-28			26	18" RCP	1.15		
28	344.40	344.10				349.5±(TC)	CI - SEE DTL. 8000.03
28-29			76	15" RCP	1.05		
29		345.20				350.5±(TC)	CI - SEE DTL. 8000.03
27-30			167	15" RCP	6.10		
30	354.10	353.40				359.6±(TC)	CI - SEE DTL. 8000.03
30-31			36	15" RCP	1.39		
31		354.60				359.5±(TC)	CI - SEE DTL. 8000.03
32		335.60					PIPE END @ RET. WALL
32-33			90	18" RCP	5.22		
33	340.30						PIPE END @ RET. WALL
34		287.10					FES
34-35			76*	36" RCP	1.04		O-RING
35	SEE DETAIL	287.90				308.0±	JB - SEE DTL. SITE 4.05
36		305.00					FES
36-37			26*	36" RCP	1.12		
37	306.00	305.30				315.0±	MH/JB - SEE DTL. 8000.05
37-38			85	36" RCP	1.05		
38	307.00	306.90				324.5±	RTCB (FUTURE CI) BOX SPEC. SEE DTL. 8000.03
38-39			147	30" RCP	1.02		OPENING/SLAB SEE DTL. 8000.01