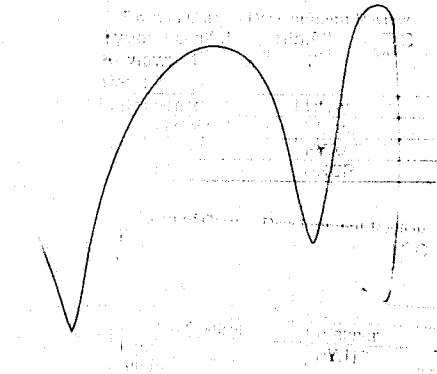


WESTON OFFICE BUILDING

5001 Weston Parkway
Cary, NC

BID SET - SEPTEMBER 17, 1999

- 1 12-10-99 VALUE ENGINEERING REVISIONS
- 2 1/04/00 TOWN OF CARY REVISIONS
- 3 3/14/00 VALUE ENGINEERING REVISIONS
- 4 4/17/00 TOWN OF CARY REVISIONS



The
Roberts
Group
Architecture • Planning
4011 West Chase Blvd. Suite 100
Raleigh, North Carolina 27607
Ph: 919.831.1831 Fax: 919.831.1833

INDEX OF DRAWINGS

COVERSHEET

- SU-1 SITE UTILITIES PLAN
- SU-2 FOOTCANDLE PLOT AND SITE LIGHTING DETAILS
- BD-1.1 BUILDING CODE DATA
- BD-1.2 UL DETAILS
- BD-1.3 UL DETAILS
- PME-1 UL PENETRATION DETAILS

SITE DEVELOPMENT PACKAGE

- L1 PLANTING PLAN
- S1 TREE SURVEY
- S6 SITE DETAILS

ARCHITECTURAL

- SP-1 SITE PLAN
- SP-2 SITE DETAILS
- SP-3 GRADING, DRAINAGE, SEDIMENT, & EROSION CONTROL
- A-1.1 GROUND FLOOR PLAN
- A-1.2 FIRST FLOOR PLAN
- A-1.3 SECOND FLOOR PLAN
- A-2.1 PARKING PATTERN PLAN
- A-3.1 REFLECTED CEILING PLAN-GROUND FLOOR
- A-3.2 REFLECTED CEILING PLAN-FIRST FLOOR
- A-3.3 REFLECTED CEILING PLAN-SECOND FLOOR
- A-4.1 ROOF PLAN
- A-4.2 ROOF DETAILS
- A-5.1 WEST, and SOUTH ELEVATIONS
- A-5.2 NORTH and EAST ELEVATIONS
- A-5.3 FRONT ELEVATION
- A-7.1 WALL SECTIONS
- A-7.2 WALL SECTIONS
- A-7.3 WALL SECTIONS
- A-7.4 WALL SECTIONS/ELEVATOR PLAN & SECTION
- A-7.5 STAIR PLANS & SECTION
- A-8.1 ENLARGED TOILET PLANS and ELEVATIONS
- A-9.1 COLUMN DETAILS
- A-9.2 COLUMN DETAILS
- A-9.3 COLUMN DETAILS
- A-9.4 PARTITION TYPES
- A-10.1 DOOR SCHEDULE & DETAILS
- A-10.2 WINDOW DETAILS & ELEVATIONS

STRUCTURAL

- S-1 STRUCTURAL NOTES, PLAN LEGEND & ABBREVIATIONS
- S-2 GROUND FLOOR FOUNDATION PLAN
- S-3 TYPICAL FOUNDATION DETAILS
- S-4 TYPICAL FOUNDATION DETAILS
- S-5 MISC. DETAILS
- S-6 FIRST FLOOR FRAMING PLAN
- S-7 SECOND FLOOR FRAMING PLAN
- S-8 ROOF FRAMING PLAN
- S-9 SCREENWALL FRAMING PLAN
- S-10 SECTIONS
- S-11 SECTIONS
- S-12 SECTIONS
- S-13 BRACED BAY ELEVATIONS
- S-14 TYPICAL FRAMING DETAILS
- S-15 TYPICAL FRAMING DETAILS

PLUMBING

- P-1 GROUND FLOOR PLUMBING PLAN
- P-2 FIRST FLOOR PLUMBING PLAN
- P-3 SECOND FLOOR PLUMBING PLAN

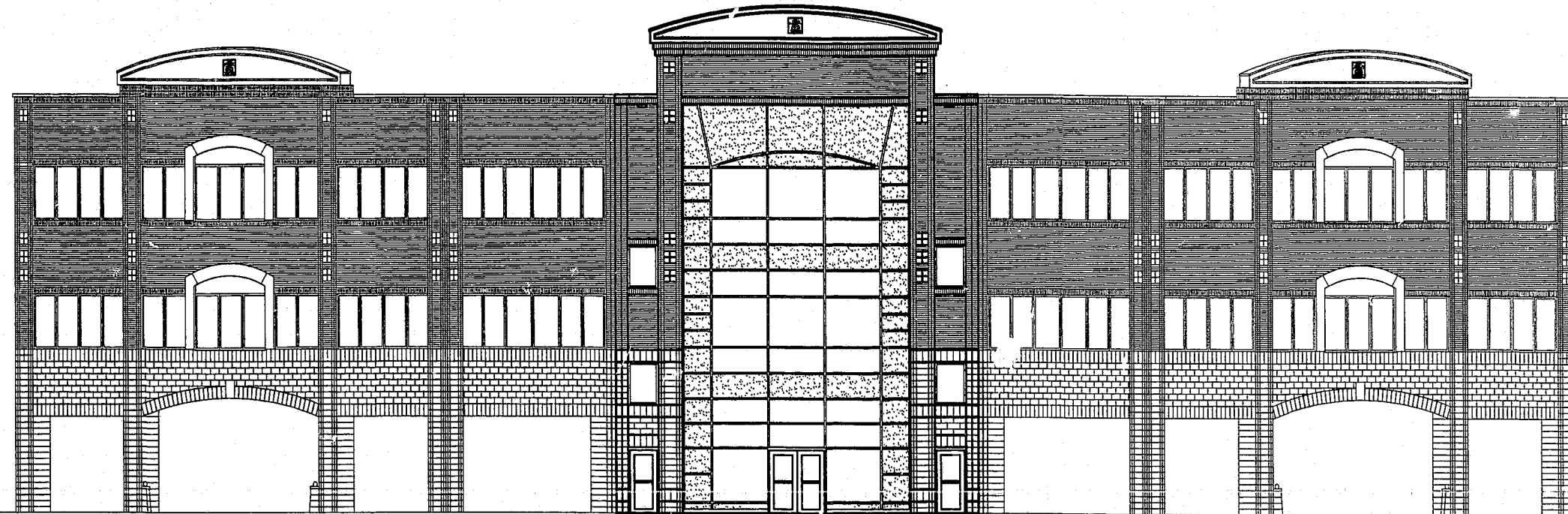
MECHANICAL

- M-1 GROUND FLOOR MECHANICAL PLAN
- M-2 FIRST FLOOR MECHANICAL PLAN
- M-3 SECOND FLOOR MECHANICAL PLAN
- M-4 ROOF MECHANICAL PLAN
- M-5 MECHANICAL SCHEDULES & DETAILS
- M-6 MECHANICAL DETAILS

ELECTRICAL

- E-1 GROUND FLOOR LIGHTING & FIRE ALARM PLAN
- E-2 GROUND FLOOR ELECTRICAL PLAN
- E-3 FIRST FLOOR LIGHTING & FIRE ALARM PLAN
- E-4 FIRST FLOOR ELECTRICAL PLAN
- E-5 SECOND FLOOR LIGHTING & FIRE ALARM PLAN
- E-6 SECOND FLOOR ELECTRICAL PLAN
- E-7 ROOF ELECTRICAL PLAN
- E-8 ELECTRICAL SCHEDULES
- E-9 ELECTRICAL RISER DETAILS

NOTE: SIGNAGE PACKAGE IS FORTHCOMING, AND WILL BE A SEPERATE APPROVAL PROCESS. SIGNAGE HAS NOT BEEN REVIEWED AS A PART OF THIS PLAN SUBMITTAL.



ABBREVIATIONS

AC	ABOVE CEILING	MO	MASONRY OPENING
A.C.T.	ACOUSTIC CEILING TILE	MR	MOISTURE RESISTANT
AFF	ABOVE FINISHED FLOOR	MSNRY	MASONRY
AHU	AIR HANDLING UNIT	MT	METAL THRESHOLD
ALUM	ALUMINUM	MFD	MOUNTED
BD	BOARD	MFL	METAL
B.O.	BOTTOM OF	NAT	NATURAL
BRG.	BEARING	NIC	NOT IN CONTRACT
BRK	BRICK	NO.	NUMBER
BUR	BUILT-UP ROOF	NIS	NOT TO SCALE
CH	CEILING HEIGHT	O.C.	ON CENTER
C.I.	CAST IRON	OPNG	OPENING
CJ	CENTRAL JOINT	OPP	OPPOSITE
CL	CENTERLINE	OSB	ORIENTED STRAND BOARD
CLD	CEILING	PL	PLATE
CLR	CLEAR	PLAS.	PLASTIC
CLS	CLOSER	PLAS.LNS	PLASTIC LENS
CMU	CONCRETE MASONRY UNIT	PLS	PLASTER
CO	CLEAN OUT	PNL	PANEL
COL.	COLUMN	PR	PAIR
CONC	CONCRETE	PREFIN	PREFINISHED
CONC.	CONTINUOUS	PSF	POUNDS PER SQUARE FOOT
CONTR	CONTRACTOR	PSI	POUNDS PER SQUARE INCH
CPT	CARPET	P.T.	PRESSURE TREATED
CT	CERAMIC TILE	PTD.	PAINTED
CW	COLD WATER	PTN	PARTITION
DIA	DIAMETER	PVC	POLY VINYL CHLORIDE PIPE
DIM	DIMENSION	PVRTL	PAVER TILE
DN	DOWN	PT	POWER
DS	DOWNSPOUT	QT	QUARTY TILE
EA	EACH	RG	RETURN AIR GRILLE
EF	EXHAUST FAN	RBR	RUBBER
EJ	EXPANSION JOINT	RCP	REINFORCED CONCRETE PIPE
ELEV	ELEVATION	RD	ROOF DRAIN
ELEC	ELECTRIC	REF	REFERENCE
EQ	EQUAL	REINFG	REINFORCING
EW	EACH WAY	REQD	REQUIRED
ENC	ELECTRIC WATER COOLER	REVS	REVERSE
EXG	EXISTING	REFIN	REFINISHED
EXP.	EXPANSION	RM	ROOM
EXT	EXTERIOR	RO	ROUGH OPENING
FD	FLOOR DRAIN	RRL	RANWATER LEADER
FDN	FOUNDATION	SCW	SOLID CORE WOOD
FED	FIRE EXTINGUISHER CABINET	SF	SQUARE FEET
FF	FINISH FLOOR	SFCMU	SHEATHING
FH	FULL HEIGHT	SHING	SHEATHING
FN	FRESH	SHNG	SIMILAR
FL	FLOOR	SM	SIMILAR
FOR	FACE OF BRICK	SS	STAINLESS STEEL
FOC	FACE OF CONCRETE	STL	STEEL
FOM	FACE OF MASONRY	STRT	STRUCTURAL
FR	FIRE RETARDANT	SUSP	SUSPENDED
GA	GAUGE	TH	THRESHOLD
GA.VL STL	GALVANIZED STEEL	T.O.	TOP OF
GB	GRID BAR	TOS	TOP OF STEEL
GC	GENERAL CONTRACTOR	TL	TILE
GL	GLASS	TP	TOILET PAPER DISPENSER
GRD	GYPSSUM WALLBOARD	TRD	TREAD
OPF	GYPSSUM BOARD	TRZ	TERRAZZO
OPF BD	GYPSSUM BOARD	TYP	TYPICAL
HD	HARD	U.O.N.	UNLESS OTHERWISE NOTED
H.M.	HOLLOW METAL	V.J.F.	VERIFY IN FIELD
HR	HOUR	VTR	VENT THRU ROOF
HT	HEIGHT	VCT	VINYL COMPOSITION TILE
HW	HOT WATER	VCL	VINYL WALL COVERING
HRH	HOT WATER HEATER	VTL	VINYL WALL COVERING
INSUL	INSULATION	W	WALL
INT	INTERIOR	W.C.O.	WALL MOUNTED CLEANOUT
INV	INVERT	WD	WOOD
IT	JOINT	WIDW	WINDOW
LAN	LANE	WNSCT	WANSICOT
LT WT	LIGHTWEIGHT	WNSCT	WANSICOT
MAG	MAGNETIC	WNSCT	WANSICOT
MECH.	MECHANICAL	WNSCT	WANSICOT
MIN	MINIMUM	WNSCT	WANSICOT
MNT	MINUTE	WNSCT	WANSICOT

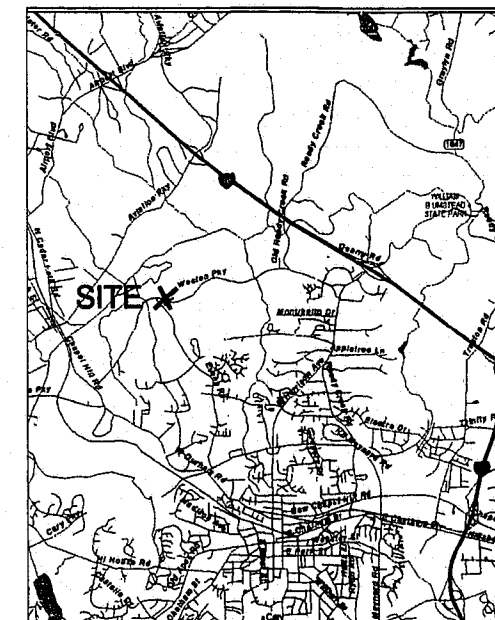
DRAWING NOTATIONS

DETAIL NO.	1	TITLE KEY (REFERENCE TO DETAILS)
SHEET NO.	A-1.1	
1	A-1.1	BUILDING SECTION KEY
1	A-1.1	WALL SECTION KEY
1	A-1.1	ELEVATION KEY
1	A-1.1	DETAIL KEY
101		ROOM NUMBER
100		DOOR NUMBER
1		EXTERIOR WINDOW TYPE
1		MISC. ACCESSORY, FURNISHING, OR INTERIOR WINDOW TYPE
1	01/01/99	REVISION

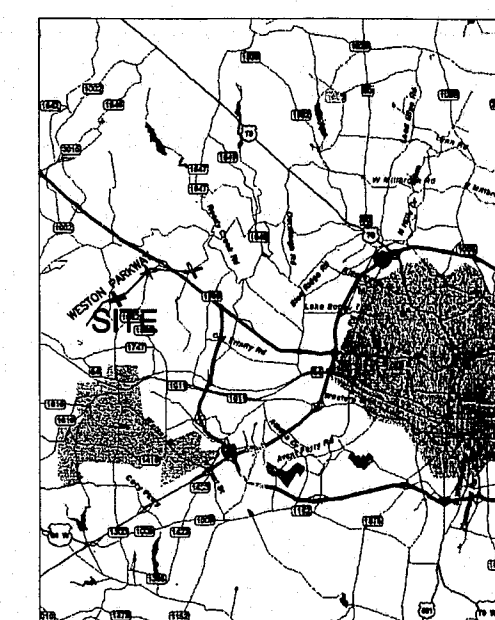
SYMBOLS

	BATT INSULATION		FINISH WOOD
	PLYWOOD		WOOD (BLOCKING)
	CONCRETE		BRICK
	CONCRETE MASONRY UNITS		GROUT
	EARTH		STEEL
	RIGID INSULATION		GRAVEL
	FIBROUS CEMENTITIOUS ACOUSTIC PANEL & INSULATION 60 ROOF PLANK SYSTEM		CENTERLINE
			ITEM ABOVE
			HIDDEN

LOCATION MAP



VICINITY MAP



SITE PLANNER:

CARTER CRAWFORD, P.A.
3519 NEW HILL-HOLLEMAN RD
NEW HILL, NC 27562
TEL: 919-387-8218
FAX: 919-387-6548

LANDSCAPE ARCHITECT:

CYNTHIA RICE
2900 GLEN BURNIE DRIVE
RALEIGH, NC 27607
TEL: 919-571-7937

STRUCTURAL ENGINEER:

STROUD, PENCE & ASSOCIATES, LTD.
2301 STONEHENGE DRIVE
SUITE 202
RALEIGH, NC 27615
TEL: 919-845-1112
FAX: 919-845-1119

PME ENGINEER:

ADCOCK ENGINEERING
4601 LAKE BOONE TRAIL
RALEIGH, NC 27607
TEL: 919-781-6338
FAX: 919-881-0547

3RD Rev
STF 2
6-5-00

00-SP-039
APPROVED
DRC

TOWN OF CARY
PROJECT NO.
00-SP-039

DATE:
SEPTEMBER 17, 1999 (BID SET)

REVISIONS:

- 1 12-10-99 VALUE ENGINEERING REVISIONS
- 2 1/04/00 TOWN OF CARY REVISIONS
- 3 3/14/00 VALUE ENGINEERING REVISIONS
- 4 4/17/00 TOWN OF CARY REVISIONS

"original approved plan"